

# PRODUCT INFORMATION PACKET



Model No: LM16739

Catalog No: LM16739

OBSOLETE REPLACED BY LM33569 - 2,1200,TEFC,184T,3/60/230/460

Regal and Leeson are trademarks of Regal Rexnord Corporation or one of its affiliated companies.

©2023 Regal Rexnord Corporation, All Rights Reserved. MC017097E





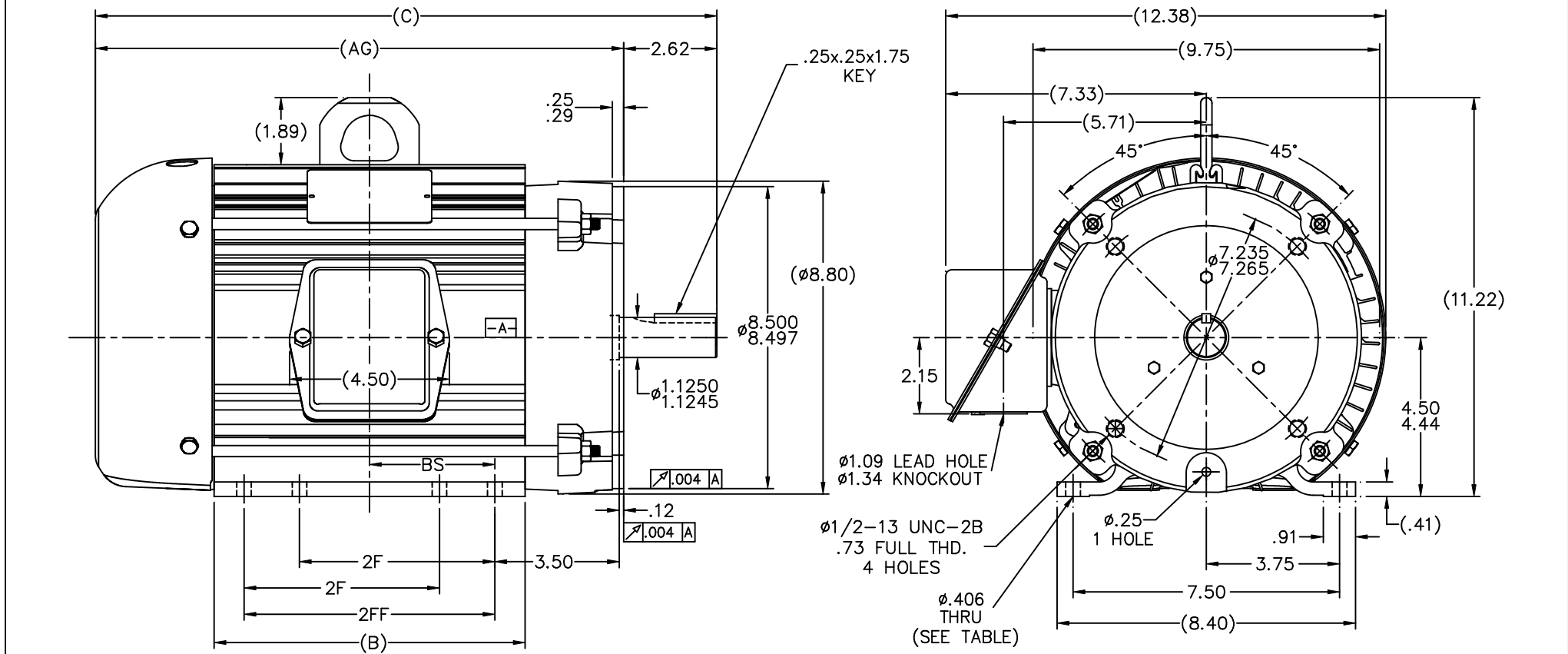
### Nameplate Specifications

Phase	3	Output HP	2 & 1.50 Hp
Output KW	1.5 & 1.1 kW	Voltage	230/460 & 190/380 V
Speed	1175 & 975 rpm	Service Factor	1.25 & 1.15
Frame	184TC	Enclosure	Totally Enclosed Fan Cooled
Thermal Protection	No Protection	Efficiency	88.5 & 87.5 %
Ambient Temperature	40 °C	Frequency	60 & 50 Hz
Current	6/3 & 5.6/2.8 A	Power Factor	70
Duty	Continuous	Insulation Class	F
Design Code	B	KVA Code	K
Drive End Bearing Size	6207	Opp Drive End Bearing Size	6205
UL	Recognized	CSA	Y
CE	Y	IP Code	43
Number of Speeds	1		

### Technical Specifications

Electrical Type	Squirrel Cage Induction Run	Starting Method	Across The Line
Poles	6	Rotation	Reversible
Resistance Main	5.65 Ohms	Mounting	Rigid Base
Motor Orientation	Horizontal	Drive End Bearing	Ball
Opp Drive End Bearing	Ball	Frame Material	Aluminum
Shaft Type	T	Assembly/Box Mounting	F1/F2 CAPABLE
Outline Drawing	B-SS601010LN-820	Connection Drawing	A-EE7308-LN

This is an uncontrolled document once printed or downloaded and is subject to change without notice. Date Created:06/22/2023

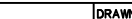


NOTES:

1. CONDUIT BOX TO BE ROTATED IN 90° STEPS.
2. NAMEPLATE TO BE READ FROM CONDUIT BOX SIDE OF MOTOR.

1. CONDUIT BOX TO BE ROTATED IN 90° STEPS.
2. NAMEPLATE TO BE READ FROM CONDUIT BOX SIDE OF MOTOR.

DASH	FR.	C	BS	B	2F	AG	2FF	FOOT HOLE
620	182T	14.83	2.25	6.20	---	12.21	4.50	4
720	184T	15.83	2.75	7.20	---	13.21	5.50	4
720	182/4T	15.83	2.75	7.20	4.50	13.21	5.50	8
820	182/4T	16.83	3.25	8.20	5.50	14.21	6.50	8
875	184T	17.49	3.53	8.75	5.50	14.87	7.06	8

10	CHANGED DASH 720 182/4T TO 184T AND DIMENSION 2FF FROM 4.50 TO 5.50 ECN 10328	JJB 05/25/2007	ML	TOLERANCES UNLESS SPECIFIED		DRAWN B/JW 02/01/2000			
9	-620, 720; 2F NOW 2FF DIM. (4 MTG HOLES) CN 33910	DRS 10-25-2005	ML	DEC. INCHES ±.1		CHK ML 02/02/2000			
8	FIXED 2FF DIM. FOR -820 WAS 5.50 CN 32479	ERH 02-02-2004	ML	.XX ±.03		APPD GK 02/02/2000			
7	ADDED OLD DASHES TO TABLE CN 32479	ERH 12-10-2003	ML	.XXX ±.005		SCALE 3=8			
6	REVISED PER CN 32479	ERH 12-01-2003	ML	.XXXX ±.0005		REF			
						FMF MU48444			
NO.	REVISION	BY & DATE	CHK	ANG	±730"	FINISH	PREV		
THIS DRAWING IN DESIGN AND DETAIL IS OUR PROPERTY AND MUST NOT BE USED EXCEPT IN CONNECTION WITH OUR WORK ALL RIGHTS OF DESIGN AND INVENTION ARE RESERVED THIS IS AN ELECTRONICALLY GENERATED DOCUMENT - DO NOT SCALE THIS PRINT						RFP DIST LB	CAD FILE ss601010In SIZE B	DRAWING NO. SS601010LN PAGE OF 10	REV. 10

THREE PHASE  
DUAL VOLTAGE MOTOR

## HIGH VOLTAGE



## LOW VOLTAGE



VIEW OF TERMINAL END

REF.  
WINDING DIAGRAM

T8Y, T2Y, T2BL, T4BX, T2EC, T2G  
T6BZ, T2B, T6BL, T4AV, T6B, T4B

OPTIONAL CORD  
CONNECTION

L1 — WHITE —  
L2 — RED —  
L3 — BLACK —

				TOLERANCES UNLESS SPECIFIED			DRAWN BLR 06/11/1999			
				DEC.	INCHES		CHK ML 06/18/1999			
				.X	±.1		APPD GK 06/18/1999			
3	ADDED THE OPTIONAL CORD CONNECTION MU46318	RDH 04/24/2003	DRS	.XX	±.02	TITLE CONNECTION DIAGRAM 3ø – DUAL VOLTAGE MOTOR	SCALE 1=1			
2	RE-ISSUE, ADDED '-' TO PART NUMBER	BLR 08/09/1999	GK	.XXX	±.005		REF			
1	NEW DRAWING	BLR 06/18/1999	GK	.XXXX	±.0005	MAT'L.	FMF			
NO.	REVISION	BY & DATE	CHK	ANG	±7'30"	FINISH	PREV			
THIS DRAWING IN DESIGN AND DETAIL IS OUR PROPERTY AND MUST NOT BE USED EXCEPT IN CONNECTION WITH OUR WORK ALL RIGHTS OF DESIGN AND INVENTION ARE RESERVED THIS IS AN ELECTRONICALLY GENERATED DOCUMENT – DO NOT SCALE THIS PRINT				RFP		CAD FILE EE7308LN	SIZE A	DRAWING NO. EE7308-LN	PAGE OF 3	REV.
				DIST WP						