

PRODUCT INFORMATION PACKET



Model No: LM16716

Catalog No: LM16716

..60HP..1200RPM.404TC.TEFC.230/460V.3PH.60HZ.CONT.40C.1.15SF.RIGID-C.....

Regal and Leeson are trademarks of Regal Rexnord Corporation or one of its affiliated companies.

©2023 Regal Rexnord Corporation, All Rights Reserved. MC017097E





Nameplate Specifications

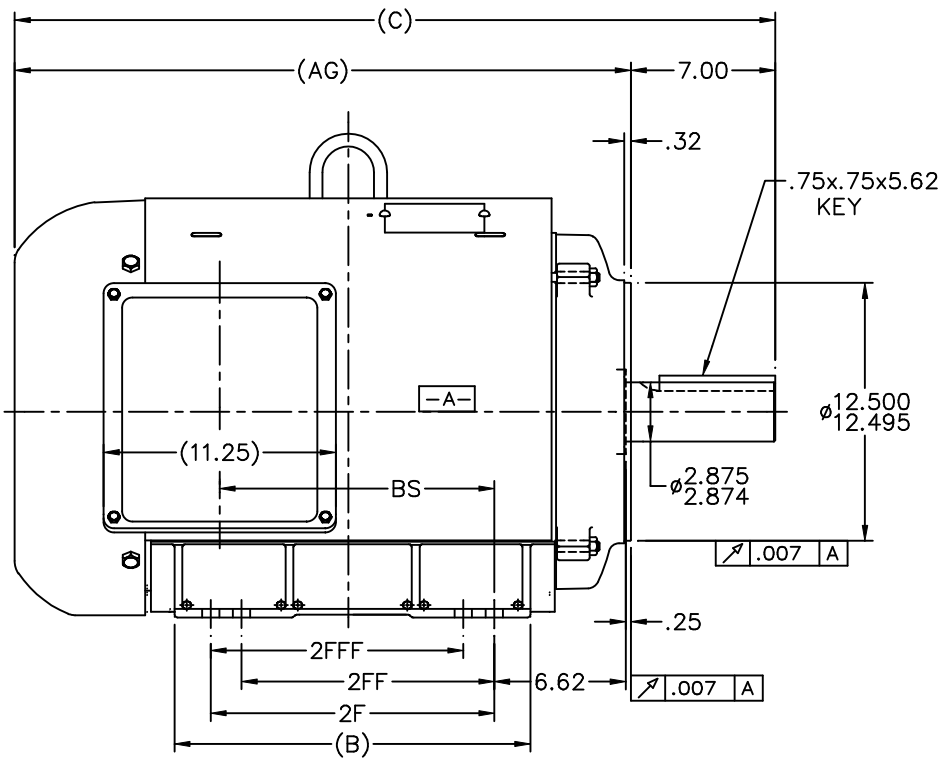
Phase	3	Output HP	60 & 50 Hp
Output KW	45.0 & 37.0 kW	Voltage	230/460 & 190/380 V
Speed	1185 & 986 rpm	Service Factor	1.15 & 1.15
Frame	404TC	Enclosure	Totally Enclosed Fan Cooled
Thermal Protection	No Protection	Efficiency	94.5 & 93.6 %
Ambient Temperature	40 °C	Frequency	60 & 50 Hz
Current	171/85.5 & 172/86 A	Power Factor	69.5
Duty	Continuous	Insulation Class	F
Design Code	B	KVA Code	F
Drive End Bearing Size	315	Opp Drive End Bearing Size	313
UL	Recognized	CSA	Y
CE	Y	IP Code	43
Number of Speeds	1		

Technical Specifications

Electrical Type	Squirrel Cage Induction Run	Starting Method	Wye Start Delta Run
Poles	6	Rotation	Reversible
Resistance Main	.09 Ohms	Mounting	Rigid Base
Motor Orientation	Horizontal	Drive End Bearing	Ball
Opp Drive End Bearing	Ball	Frame Material	Rolled Steel
Shaft Type	T	Assembly/Box Mounting	F1 ONLY
Outline Drawing	XJ2F1SC1-1796	Connection Drawing	A-EE7308AA-LN

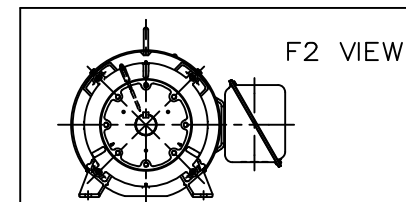
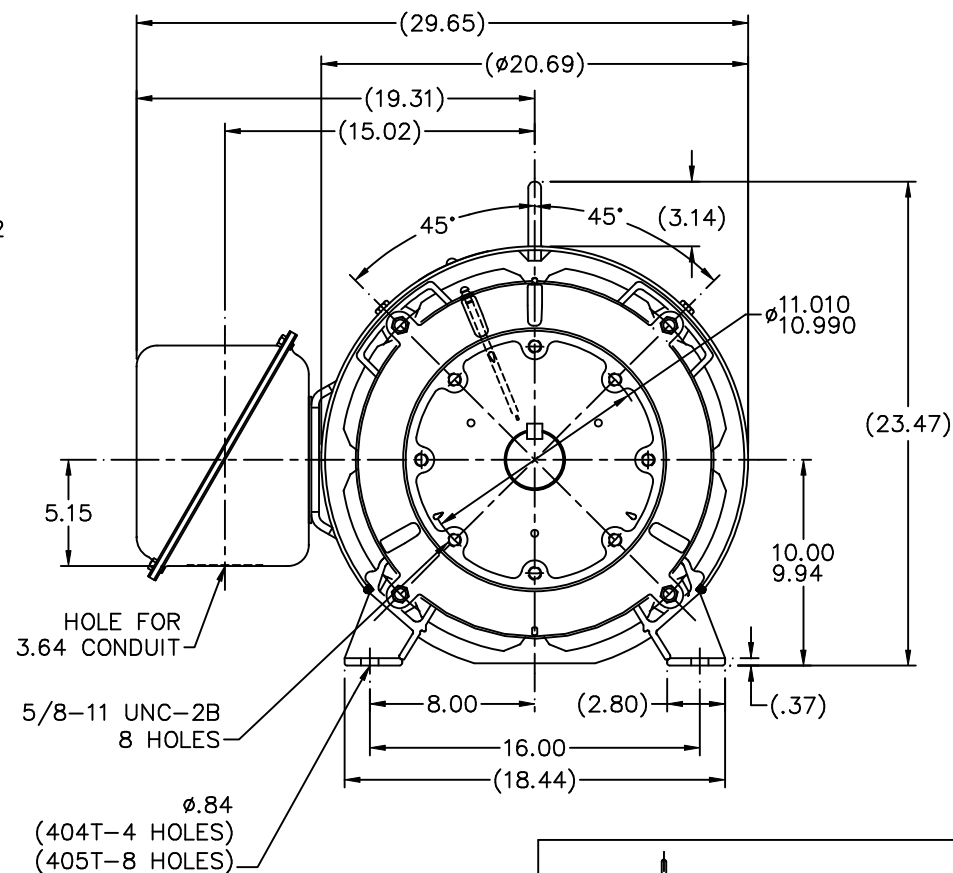
This is an uncontrolled document once printed or downloaded and is subject to change without notice. Date Created:06/23/2023


XJ2F1SC1



NOTES:

1. CONDUIT BOX CAN BE ROTATED IN 90° STEPS.
2. NAMEPLATES TO BE READ FROM CONDUIT BOX SIDE OF MOTOR



													TOLERANCES UNLESS SPECIFIED				DRAWN DRS 10-30-2001			
													DEC. INCHES				CHK ML 10-30-2001			
													.X ±.1				APPD HHN 10-30-2001			
													.XX ±.03							
DASH	FRAME	C	AG	B	2F	2FF	2FFF	BS	2	MOVED "BS" DIM. TO CORRECT LOCATION	RJW 07-26-2007	ML	.XXX ±.005	TITLE OUTLINE 400TC-TEFC-UEI-DE C'FACE			SCALE 1=6			
1796	404TC	35.37	28.37	15.75	12.25	----	----	11.81	1	NEW DRAWING MU39382	DRS 11-07-2001		.XXXX ±.0005	MAT'L			REF			
1946	405TC	36.87	29.87	17.25	13.75	12.25	12.25	13.31	NO.	REVISION	BY & DATE	CHK	ANG ±7°30"	FINISH			FMF			
THIS DRAWING IN DESIGN AND DETAIL IS OUR PROPERTY AND MUST NOT BE USED EXCEPT IN CONNECTION WITH OUR WORK. ALL RIGHTS OF DESIGN AND INVENTION ARE RESERVED. THIS IS AN ELECTRONICALLY GENERATED DOCUMENT. - DO NOT SCALE THIS PRINT.											RFP		CAD FILE XJ2F1SC1			SIZE	DRAWING NO.	PAGE	OF	REV.
											DIST BY					B	XJ2F1SC1			2

```
ERROR: syntaxerror  
OFFENDING COMMAND: --nostringval--
```

```
STACK:
```

```
/initialize  
-dictionary-  
/Pscript_WinNT_Compat  
-dictionary-
```

T12 _____
 T1 _____
 T6 _____ L1
 T7 _____

T2 _____
 T4 _____
 T8 _____ L2
 T10 _____

T3 _____
 T5 _____
 T9 _____ L3
 T11 _____

LOW VOLTAGE

T12 _____ L1
 T1 _____

T4 _____
 T7 _____

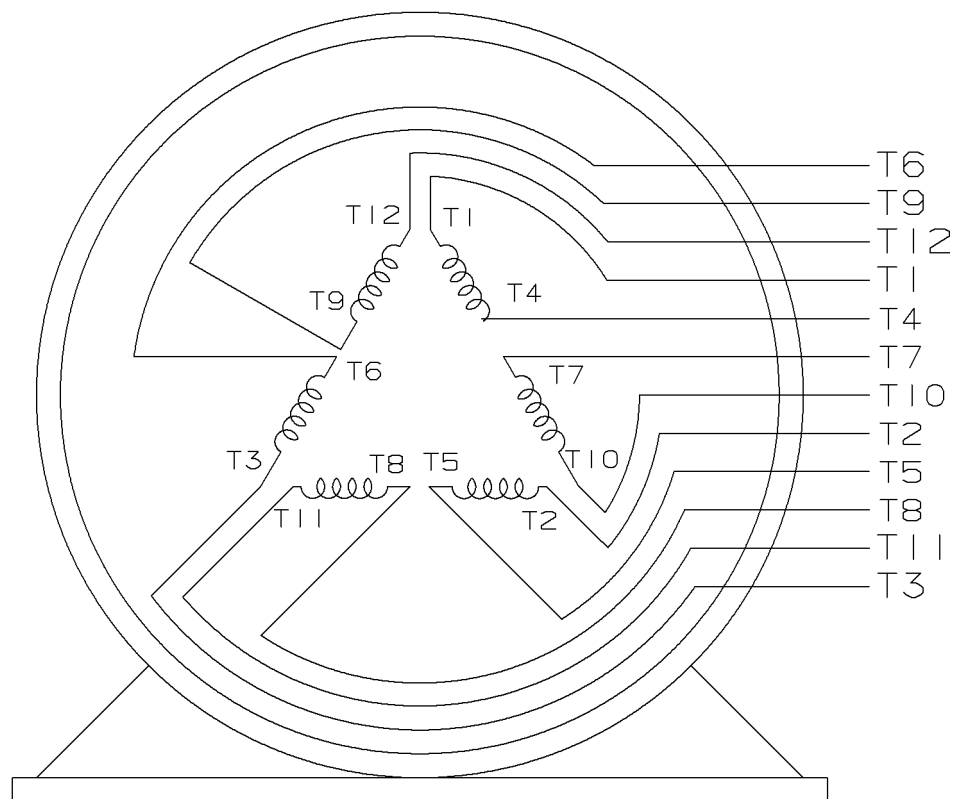
T2 _____ L2
 T10 _____

T5 _____
 T8 _____

T3 _____ L3
 T11 _____

T6 _____
 T9 _____

HIGH VOLTAGE



VIEW OF TERMINAL END

					✓ UNLESS OTHERWISE SPECIFIED DIMENSIONS ARE IN INCHES TOL. ON XX±.02 XXX±.005 XXXX±.0005 ANGLES± 7°30"		
2	08-09-1999	RE-ISSUE, ADDED '-' TO PART NUMBER	BLR		MAX. SURFACE ROUGHNESS UNLESS OTHERWISE NOTED		DRAWN BY TRB 07-16-1999
1	06-18-1999	NEW DRAWING	TRB		FINISH		CHKD BY ML 06-18-1999
					MATERIAL		APPD BY GK 06-18-1999
REV	DATE	CHANGE	NAME	PART NAME 3 PHASE CONNECTION DIAGRAM 2/1 DELTA - 12 LEADS			DRWG NO A- EE7308AA-LN
					PURCHASED	CADD FILE NO.	EE7308AALN

ERROR: undefined
OFFENDING COMMAND: Pscrip
STACK: