

PRODUCT INFORMATION PACKET

Model No: LM16593

Catalog No: LM16593

OBSOLETE REPLACED BY LM33617 - 5,1800,TEFC,184TC,3/60/575

Regal and are trademarks of Regal Rexnord Corporation or one of its affiliated companies.
©2022 Regal Rexnord Corporation, All Rights Reserved. MC017097E



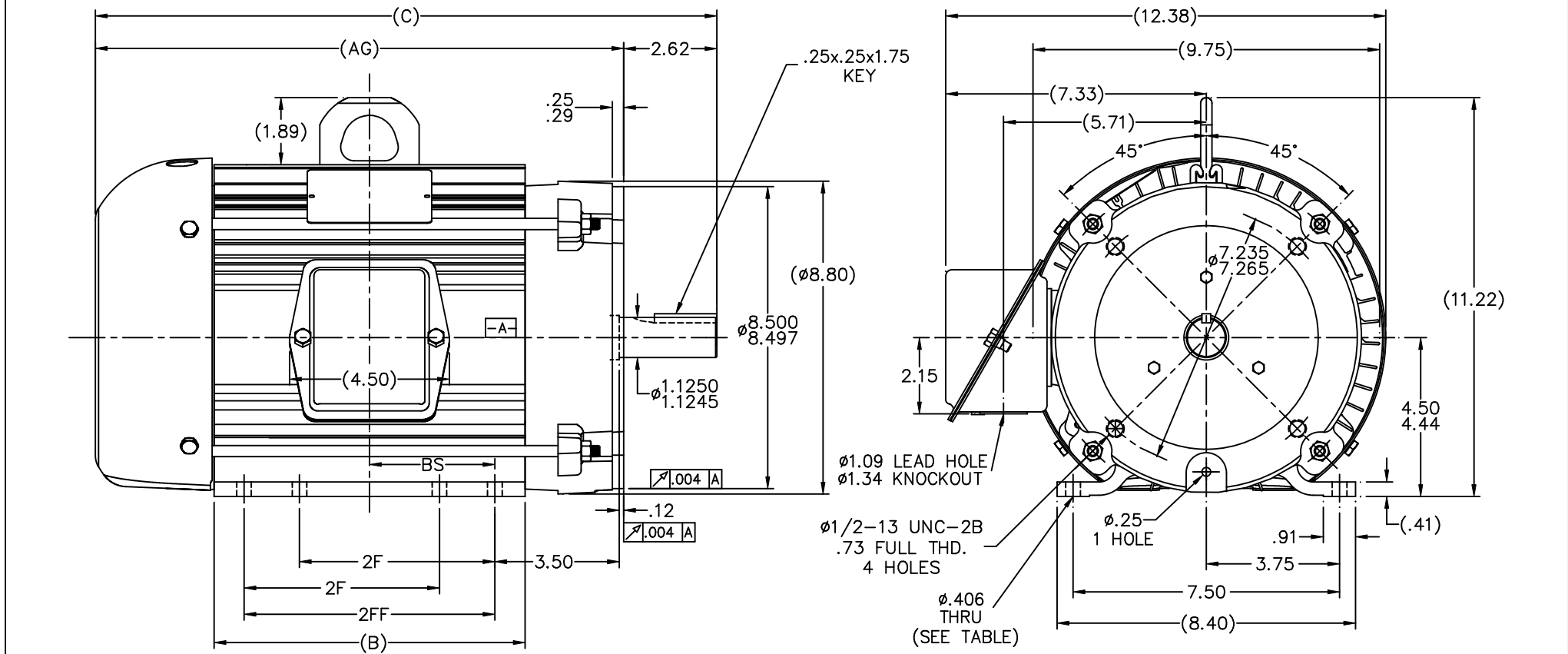
Nameplate Specifications

Output HP	5 Hp	Output KW	3.7 kW
Frequency	60 Hz	Voltage	575 V
Current	5.2 A	Speed	1745 rpm
Service Factor	1.25	Phase	3
Efficiency	87.5 %	Power Factor	82.5
Duty	Continuous	Insulation Class	F
Design Code	B	KVA Code	J
Frame	184TC	Enclosure	Totally Enclosed Fan Cooled
Thermal Protection	No Protection	Ambient Temperature	40 °C
Drive End Bearing Size	207	Opp Drive End Bearing Size	205
UL	Recognized	CSA	Y
CE	Y	IP Code	43
Number of Speeds	1		

Technical Specifications

Electrical Type	Squirrel Cage Induction Run	Starting Method	Across The Line
Poles	4	Rotation	Reversible
Resistance Main	3.05 Ohms	Mounting	Rigid Base
Motor Orientation	Horizontal	Drive End Bearing	Ball
Opp Drive End Bearing	Ball	Frame Material	Aluminum
Shaft Type	T	Assembly/Box Mounting	F1/F2 CAPABLE
Connection Drawing	A-EE7300-LN	Outline Drawing	B-SS601010LN-720

This is an uncontrolled document once printed or downloaded and is subject to change without notice. Date Created:07/18/2022

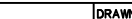


NOTES:

1. CONDUIT BOX TO BE ROTATED IN 90° STEPS.
2. NAMEPLATE TO BE READ FROM CONDUIT BOX SIDE OF MOTOR.

1. CONDUIT BOX TO BE ROTATED IN 90° STEPS.
2. NAMEPLATE TO BE READ FROM CONDUIT BOX SIDE OF MOTOR.

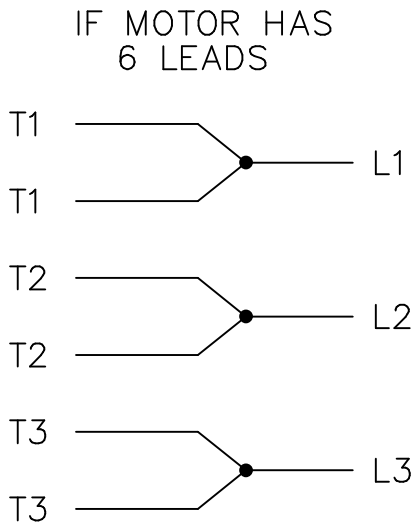
DASH	FR.	C	BS	B	2F	AG	2FF	FOOT HOLE
620	182T	14.83	2.25	6.20	---	12.21	4.50	4
720	184T	15.83	2.75	7.20	---	13.21	5.50	4
720	182/4T	15.83	2.75	7.20	4.50	13.21	5.50	8
820	182/4T	16.83	3.25	8.20	5.50	14.21	6.50	8
875	184T	17.49	3.53	8.75	5.50	14.87	7.06	8

10	CHANGED DASH 720 182/4T TO 184T AND DIMENSION 2FF FROM 4.50 TO 5.50 ECN 10328	JJB 05/25/2007	ML	TOLERANCES UNLESS SPECIFIED			DRAWN BJW 02/01/2000				
9	-620, 720; 2F NOW 2FF DIM. (4 MTG HOLES) CN 33910	DRS 10-25-2005	ML	DEC. INCHES ±.1			CHK ML 02/02/2000				
8	FIXED 2FF DIM. FOR -820 WAS 5.50 CN 32479	ERH 02-02-2004	ML	.XX ±.03	TITLE OUTLINE		APPD GK 02/02/2000				
7	ADDED OLD DASHES TO TABLE CN 32479	ERH 12-10-2003	ML	.XXX ±.005	180T FR. - TEFC - C'FACE		SCALE 3=8				
6	REVISED PER CN 32479	ERH 12-01-2003	ML	.XXX ±.0005	MAT'L		REF				
							FMF MU48444				
NO.	REVISION	BY & DATE	CHK	ANG	±730"	FINISH	PREV				
THIS DRAWING IN DESIGN AND DETAIL IS OUR PROPERTY AND MUST NOT BE USED EXCEPT IN CONNECTION WITH OUR WORK ALL RIGHTS OF DESIGN AND INVENTION ARE RESERVED THIS IS AN ELECTRONICALLY GENERATED DOCUMENT - DO NOT SCALE THIS PRINT						RFP	CAD FILE ss601010In	SIZE B	DRAWING NO. SS601010LN	PAGE OF 10	REV. 10

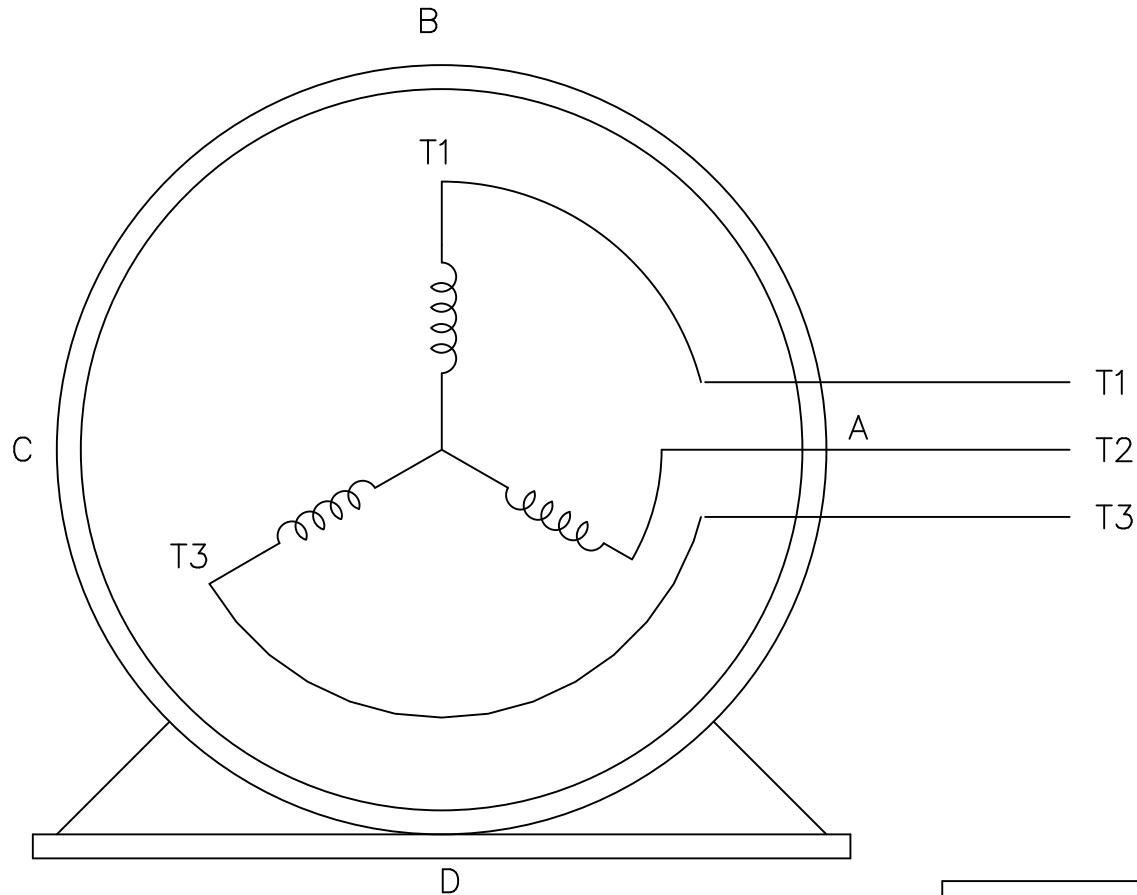
THREE PHASE – SINGLE VOLTAGE
MOTOR – CONDUIT BOX @ 'A'

EE7300-LN

TO REVERSE ROTATION:
INTERCHANGE ANY TWO LINE
LEAD CONNECTIONS



A-9806 DECAL




VIEW OF TERMINAL END

OPTIONAL CORD
CONNECTION

L1 WHITE

L2 RED

L3 BLACK

			TOLERANCES UNLESS SPECIFIED			DRAWN BLR 08-13-1999		
			DEC.	INCHES		CHK	ML	08-13-1999
			.X	±.1		APPD	GK	08-13-1999
			.XX	±.02		SCALE 1=1		
2	ADDED OPTIONAL CORD CONNECTION PER MU47226	CTO 03-31-2004	PJB	.XXX	±.005	TITLE CONNECTION DIAGRAM SINGLE VOLT – 3ø MOTOR		
1	NEW DRAWING	CTO 08-13-1999		.XXXX	±.0005	MAT'L.		
NO.	REVISION	BY & DATE	CHK	ANG	±7'30"	FINISH		
THIS DRAWING IN DESIGN AND DETAIL IS OUR PROPERTY AND MUST NOT BE USED EXCEPT IN CONNECTION WITH OUR WORK ALL RIGHTS OF DESIGN AND INVENTION ARE RESERVED THIS IS AN ELECTRONICALLY GENERATED DOCUMENT – DO NOT SCALE THIS PRINT			RFP	CAD FILE EE7300_LN			SIZE A	DRAWING NO. EE7300-LN
			DIST WP					PAGE OF 2