

PRODUCT INFORMATION PACKET



Model No: LM16503

Catalog No: LM16503

OBSOLETE - REPLACED BY LM16656 - 7.5,1200,TEFC,254T,3/60/230/460

Regal and Leeson are trademarks of Regal Rexnord Corporation or one of its affiliated companies.

©2023 Regal Rexnord Corporation, All Rights Reserved. MC017097E





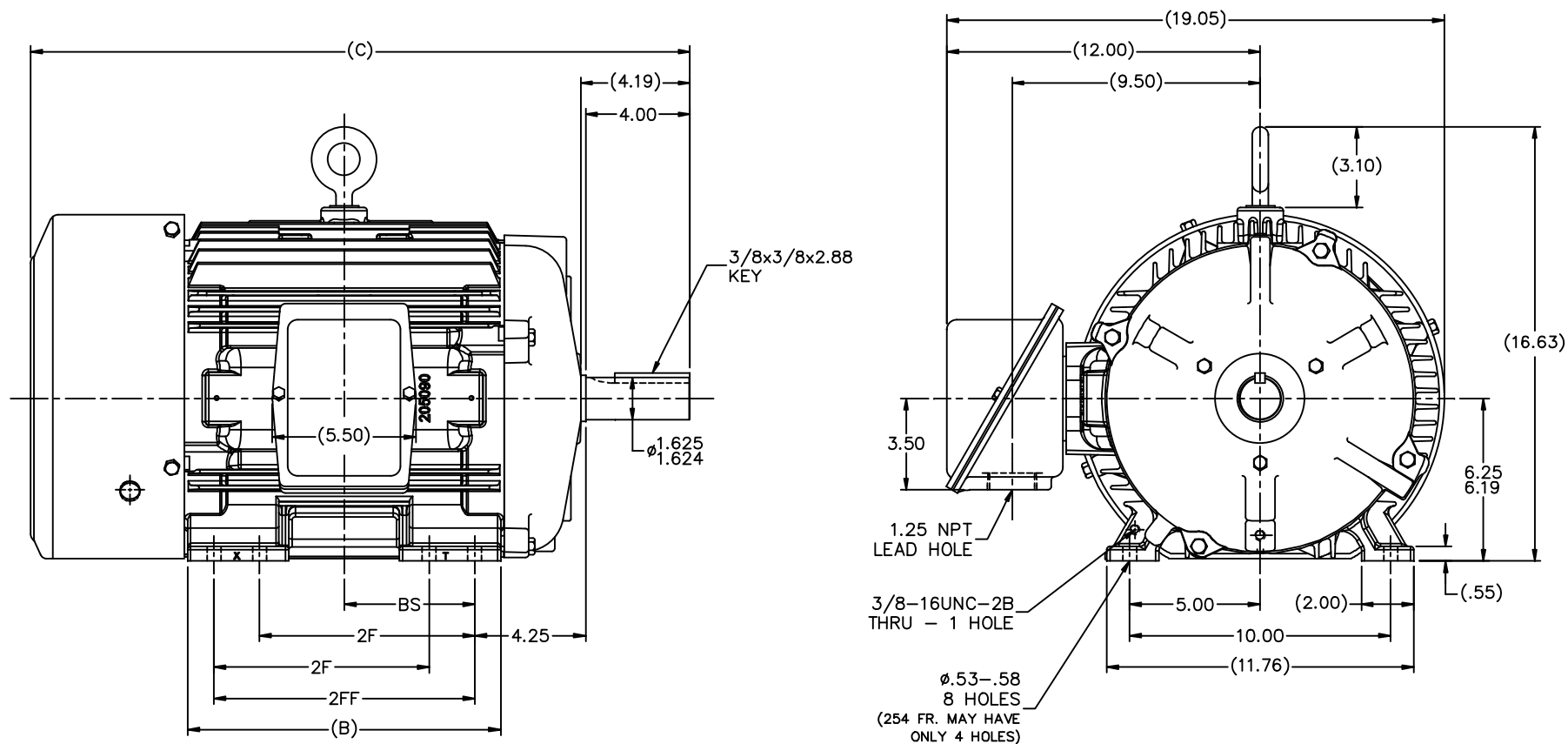
Nameplate Specifications

Phase	3	Output HP	7.50 & 7.50 Hp
Output KW	5.6 & 5.6 kW	Voltage	230/460 & 208/415 V
Speed	1175 & 970 rpm	Service Factor	1.25 & 1.15
Frame	254T	Enclosure	Totally Enclosed Fan Cooled
Thermal Protection	No Protection	Efficiency	89.5 & 89.5 %
Ambient Temperature	40 °C	Frequency	60 & 50 Hz
Current	19.6/9.8 & 22/11 A	Power Factor	80
Duty	Continuous	Insulation Class	F
Design Code	B	KVA Code	H
Drive End Bearing Size	309	Opp Drive End Bearing Size	210
UL	Recognized	CSA	Y
CE	Y	IP Code	54
Number of Speeds	1		

Technical Specifications

Electrical Type	Squirrel Cage Induction Run	Starting Method	Across The Line
Poles	6	Rotation	Reversible
Resistance Main	1.31 Ohms	Mounting	Rigid Base
Motor Orientation	Horizontal	Drive End Bearing	Ball
Opp Drive End Bearing	Ball	Frame Material	Cast Iron
Shaft Type	T	Assembly/Box Mounting	F1/F2 CAPABLE
Outline Drawing	B-SS203002LN-1050	Connection Drawing	A-EE7308-LN

This is an uncontrolled document once printed or downloaded and is subject to change without notice. Date Created:06/22/2023

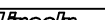


NOTES:

1. BOX CAN BE ROTATED ON ITS AXIS.
2. BOX CAN BE MOUNTED ON OPPOSITE SIDE BY REMOVING BRACKETS AND TURNING FRAME 180°.
3. NAMEPLATE TO BE READ FROM CONDUIT BOX SIDE OF MOTOR.

(B-SS200158)

1050	254T	23.52	10.25	8.25	---	4.12
1225	256T	25.27	12.00	8.25	10.00	5.00
DASH	FRAME	C	B	2F	2FF	BS

					TOLERANCES UNLESS SPECIFIED		DRAWN CAV 04-14-2000
				DEC.	INCHES		CHK DRS 04-14-2000
				X	±.1		APPD TB 04-14-2000
				.XX	±.03		SCALE 5=18
2	UPDATED TO NEW FRAME DESIGN MU109591	MSG 09-07-2012	BW	.XXX	±.005		REF
1	NEW DRAWING MU30201	CAV 04-14-2000		.XXXX	±.0005		FIMF
NO.	REVISION	BY & DATE	CHK	ANG	±7°30"	FINISH	PREV
THIS DRAWING IN DESIGN AND DETAIL IS OUR PROPERTY AND MUST NOT BE USED EXCEPT IN CONNECTION WITH OUR WORK. ALL RIGHTS OF DESIGN AND INVENTION ARE RESERVED. THIS IS AN ELECTRONICALLY GENERATED DOCUMENT - DO NOT SCALE THIS PDRY.						RFP 04-14-2000	CAD FILE ss203002in
						DIST LB	
						SIZE B	DRAWING NO. SS203002LN PAGE 1 OF 1 REV. 2

THREE PHASE
DUAL VOLTAGE MOTOR

HIGH VOLTAGE




LOW VOLTAGE

REF.
WINDING DIAGRAM

T8Y, T2Y, T2BL, T4BX, T2EC, T2G
T6BZ, T2B, T6BL, T4AV, T6B, T4B

OPTIONAL CORD
CONNECTION

L1 — WHITE
L2 — RED
L3 — BLACK

				TOLERANCES UNLESS SPECIFIED			DRAWN BLR 06/11/1999				
				DEC.	INCHES		CHK ML 06/18/1999				
				.X	±.1		APPD GK 06/18/1999				
3	ADDED THE OPTIONAL CORD CONNECTION MU46318	RDH 04/24/2003	DRS	.XX	±.02	TITLE CONNECTION DIAGRAM 3ø – DUAL VOLTAGE MOTOR	SCALE 1=1				
2	RE-ISSUE, ADDED '-' TO PART NUMBER	BLR 08/09/1999	GK	.XXX	±.005		REF				
1	NEW DRAWING	BLR 06/18/1999	GK	.XXXX	±.0005	MAT'L.	FMF				
NO.	REVISION	BY & DATE	CHK	ANG	±7'30"	FINISH	PREV				
THIS DRAWING IN DESIGN AND DETAIL IS OUR PROPERTY AND MUST NOT BE USED EXCEPT IN CONNECTION WITH OUR WORK ALL RIGHTS OF DESIGN AND INVENTION ARE RESERVED THIS IS AN ELECTRONICALLY GENERATED DOCUMENT – DO NOT SCALE THIS PRINT			RFP		CAD FILE EE7308LN			SIZE	DRAWING NO.	PAGE OF	REV.
			DIST WP					A	EE7308-LN		3