

PRODUCT INFORMATION PACKET



Model No: LM16253

Catalog No: LM16253

OBSOLETE - REPLACED BY LM16773 - 30,3600,TEFC,286TSC,3/60/230/460

Regal and Leeson are trademarks of Regal Rexnord Corporation or one of its affiliated companies.

©2023 Regal Rexnord Corporation, All Rights Reserved. MC017097E





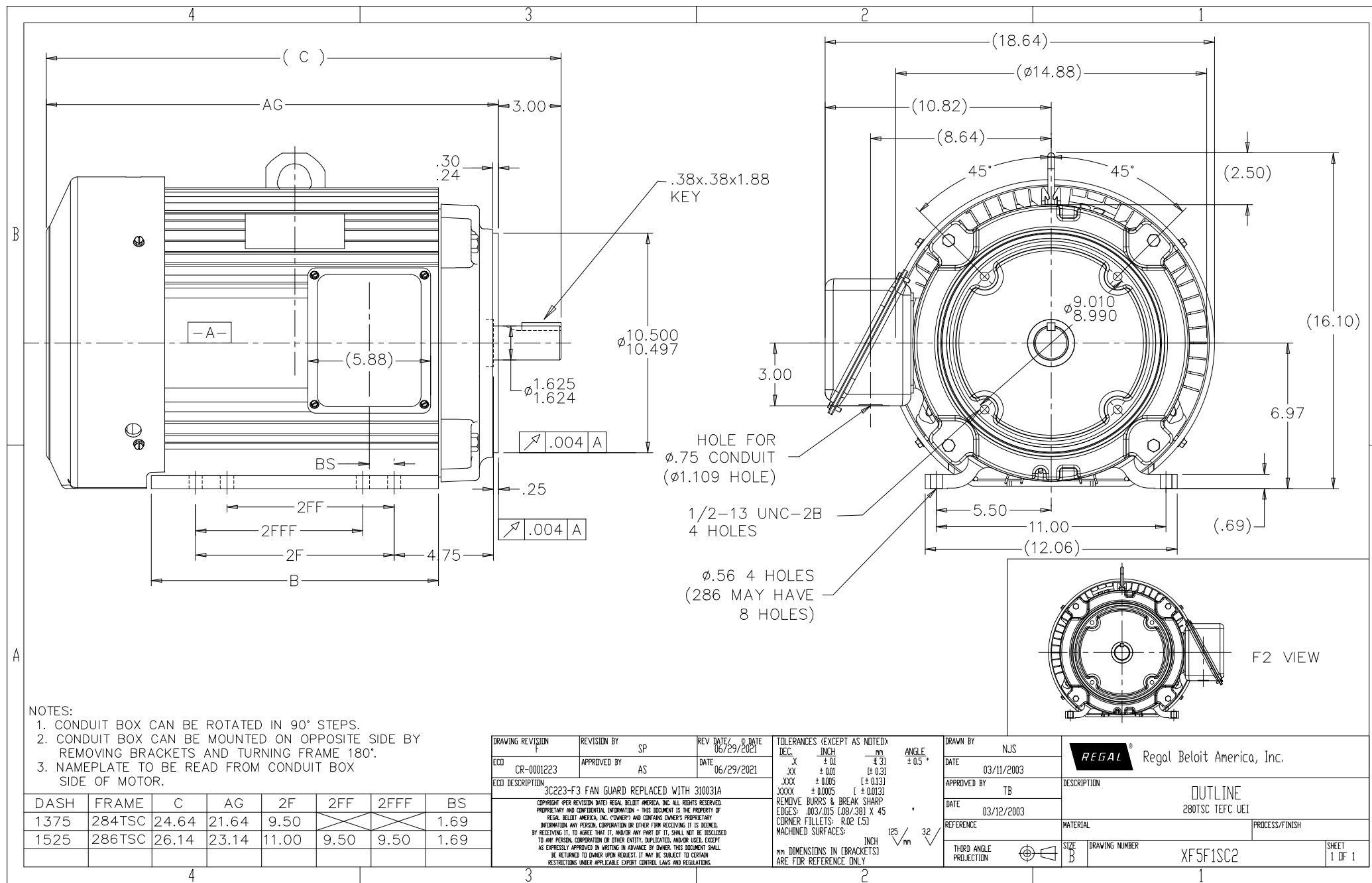
Nameplate Specifications

Phase	3	Output HP	30 & 30 Hp
Output KW	22.4 & 22.4 kW	Voltage	230/460 & 208/415 V
Speed	3530 & 2920 rpm	Service Factor	1.25 & 1.0
Frame	286TSC	Enclosure	Totally Enclosed Fan Cooled
Thermal Protection	No Protection	Efficiency	91 & 91.7 %
Ambient Temperature	40 °C	Frequency	60 & 50 Hz
Current	68/34 & 76/38 A	Power Factor	90.5
Duty	Continuous	Insulation Class	F
Design Code	B	KVA Code	G
Drive End Bearing Size	312	Opp Drive End Bearing Size	209
UL	Recognized	CSA	Y
CE	Y	IP Code	43
Number of Speeds	1		

Technical Specifications


Electrical Type	Squirrel Cage Induction Run	Starting Method	Wye Start Delta Run
Poles	2	Rotation	Reversible
Resistance Main	0 Ohms	Mounting	Rigid Base
Motor Orientation	Horizontal	Drive End Bearing	Ball
Opp Drive End Bearing	Ball	Frame Material	Aluminum
Shaft Type	TS	Assembly/Box Mounting	F1/F2 CAPABLE
Outline Drawing	XF5F1SC2-1525	Connection Drawing	3A263-2

This is an uncontrolled document once printed or downloaded and is subject to change without notice. Date Created:06/23/2023



- NOTES:
1. CONDUIT BOX CAN BE ROTATED IN 90° STEPS.
 2. CONDUIT BOX CAN BE MOUNTED ON OPPOSITE SIDE BY REMOVING BRACKETS AND TURNING FRAME 180°.
 3. NAMEPLATE TO BE READ FROM CONDUIT BOX SIDE OF MOTOR.

DASH	FRAME	C	AG	2F	2FF	2FFF	BS
1375	284TSC	24.64	21.64	9.50			1.69
1525	286TSC	26.14	23.14	11.00	9.50	9.50	1.69

DRAWING REVISION F	REVISION BY SP	REV. DATE / © DATE 06/29/2021	TOLERANCES (EXCEPT AS NOTED): DEC. INCH MM .X ± .01 ± .3 .XX ± .01 ± .3 .XXX ± .0005 [± .013] .XXXX ± .0005 [± .013] REMOVE BURRS & BREAK SHARP EDGES: .003/.015 (.08/.38) X 45 CORNER FILLETS: R.02 (.5) MACHINED SURFACES: INCH 125 √ mm 32	DRAWN BY NJS	 Regal Beloit America, Inc.		
ECD CR-0001223	APPROVED BY AS	DATE 06/29/2021	DATE 03/11/2003	DESCRIPTION OUTLINE 280TSC TEFC UET			
ECCD DESCRIPTION 3C223-F3 FAN GUARD REPLACED WITH 310031A			APPROVED BY TB	MATERIAL			
COPYRIGHT (PER REVISION DATED) REGAL, BELOIT AMERICA, INC. ALL RIGHTS RESERVED. PROPRIETARY AND CONFIDENTIAL INFORMATION - THIS DOCUMENT IS THE PROPERTY OF REGAL, BELOIT AMERICA, INC. (OWNER) AND CONTAINS OWNER'S PROPRIETARY INFORMATION. ANY PERSON, CORPORATION OR OTHER FOR RECEIVING IT IS HEREBY INFORMED THAT IT IS TO BE KEPT IN CONFIDENCE AND NOT TO BE DISCLOSED TO ANY PERSON, CORPORATION OR OTHER ENTITY, DUPLICATED, AND/OR USED, EXCEPT AS EXPRESSLY APPROVED IN WRITING IN ADVANCE BY OWNER. THIS DOCUMENT SHALL BE RETURNED TO OWNER UPON REQUEST. IT MAY BE SUBJECT TO CERTAIN RESTRICTIONS UNDER APPLICABLE EXPORT CONTROL LAWS AND REGULATIONS.			DATE 03/12/2003	PROCESS/FINISH			
			REFERENCE	THIRD ANGLE PROJECTION	SIZE B	DRAWING NUMBER XF5F1SC2	SHEET 1 OF 1