

PRODUCT INFORMATION PACKET



Model No: LM15869
Catalog No: LM15869
5 HP General Purpose Motor, 3 phase, 3600 RPM, 230/460 V, 184T Frame, TEFC
General Purpose Motors



Regal and Leeson are trademarks of Regal Rexnord Corporation or one of its affiliated companies.
©2021 Regal Rexnord Corporation, All Rights Reserved. MC017097E





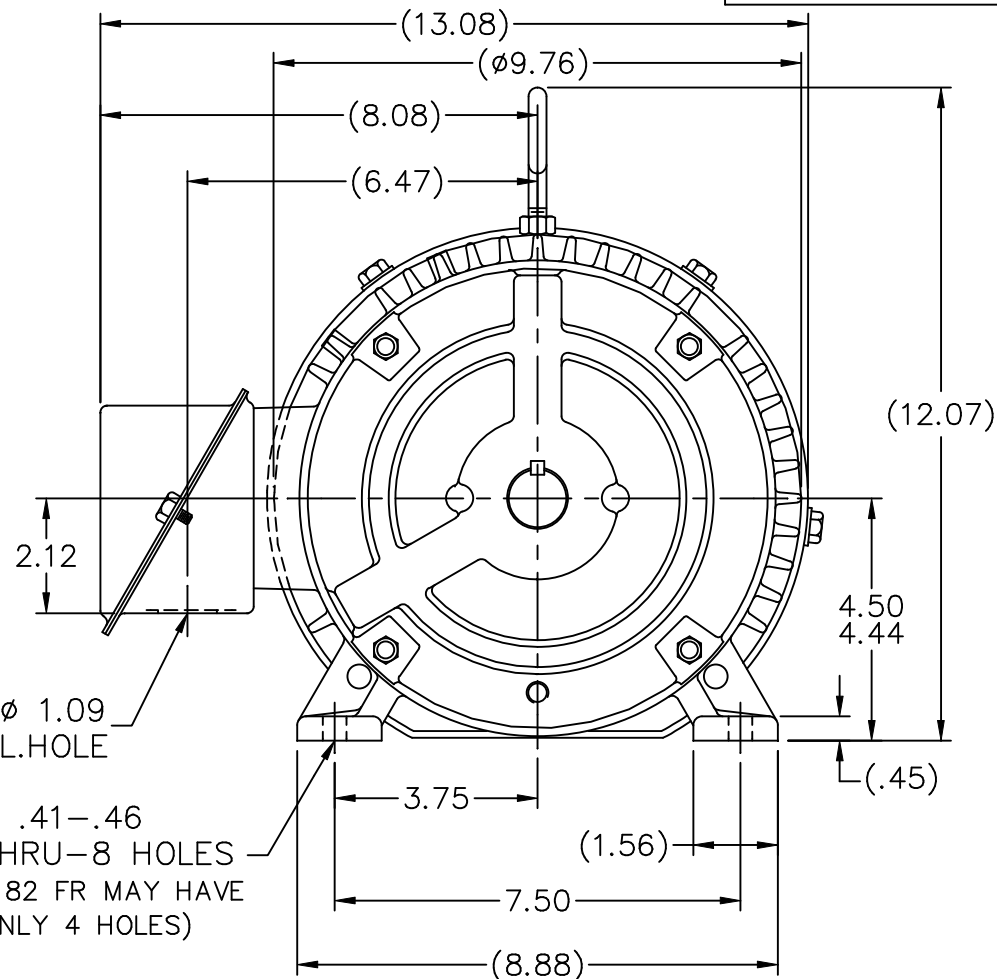
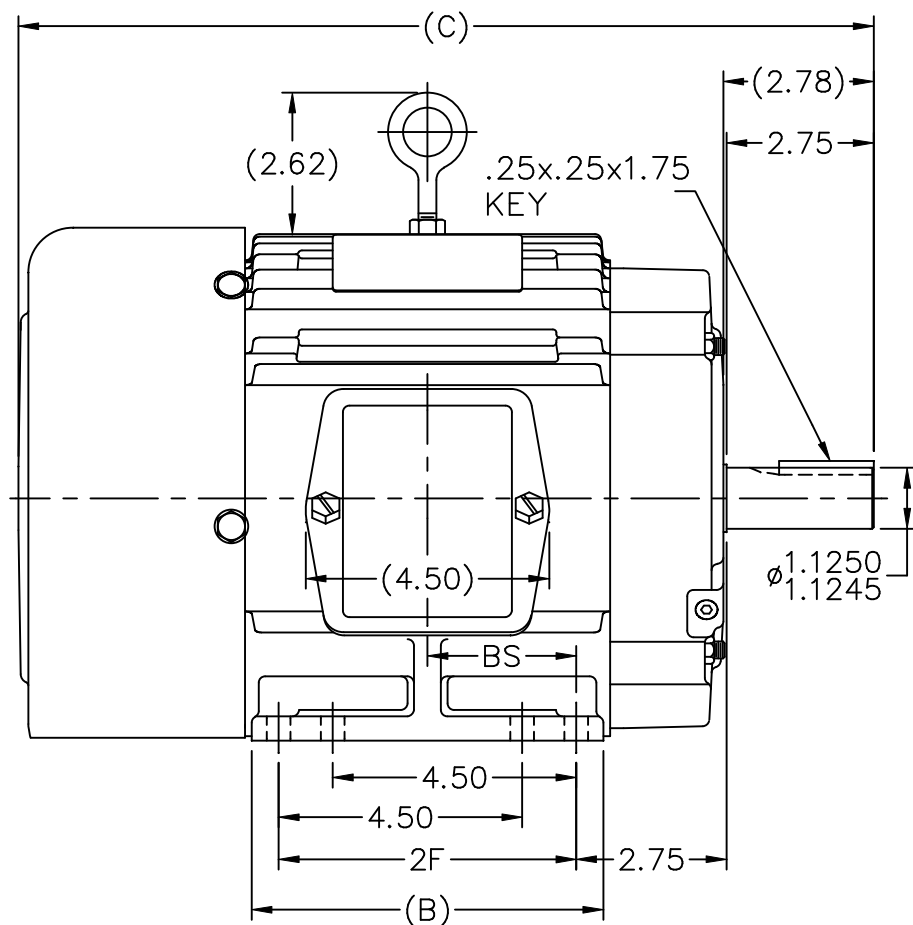
Nameplate Specifications

Output HP	5 Hp	Output KW	3.7 kW
Frequency	60 Hz	Voltage	230/460 V
Current	11.8/5.9 A	Speed	3505 rpm
Service Factor	1.15	Phase	3
Efficiency	89.5 %	Power Factor	89
Duty	Continuous	Insulation Class	F
Design Code	B	KVA Code	J
Frame	184T	Enclosure	Totally Enclosed Fan Cooled
Thermal Protection	No	Ambient Temperature	40 °C
Drive End Bearing Size	206	Opp Drive End Bearing Size	205
UL	Recognized	CSA	Y
CE	Y	IP Code	43
Number of Speeds	1		

Technical Specifications

Electrical Type	Squirrel Cage Induction Run	Starting Method	Across The Line
Poles	2	Rotation	Reversible
Resistance Main	2.32 Ohms	Mounting	Rigid Base
Motor Orientation	Horizontal	Drive End Bearing	Ball
Opp Drive End Bearing	Ball	Frame Material	Cast Iron
Shaft Type	T	Overall Length	15.81 in
Frame Length	6.75 in	Shaft Diameter	1.125 in
Shaft Extension	2.75 in	Assembly/Box Mounting	F1/F2 CAPABLE
Connection Drawing	A-EE7308-LN	Outline Drawing	A-SS63647LN-675


This is an uncontrolled document once printed or downloaded and is subject to change without notice. Date Created:10/11/2021



NOTES:

1. CONDUIT BOX CAN BE ROTATED IN 90° STEPS.
2. CONDUIT BOX CAN BE MOUNTED ON OPPOSITE SIDE BY REMOVING BRACKETS AND TURNING FRAME 180°.
3. NAMEPLATE TO BE READ FROM CONDUIT BOX SIDE OF MOTOR

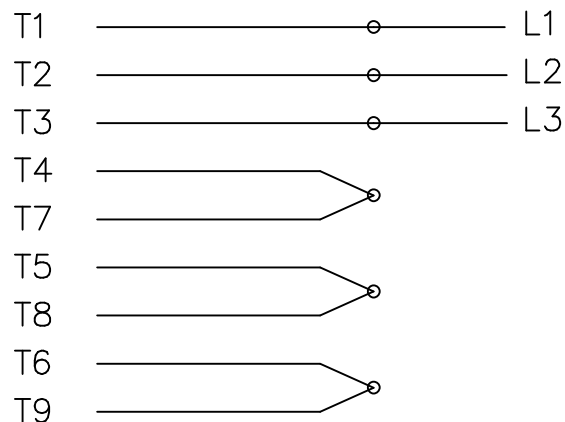
DASH	FR.	C	B	2F	BS
575	182T	14.81	5.50	4.50	2.25
675	184T	15.81	6.50	5.50	2.75

			TOLERANCES UNLESS SPECIFIED			DRAWN TRB 07-15-1999			
			DEC.	INCHES		CHK	ML	07-15-1999	
			.X	±.1		APPD	GK	07-15-1999	
			.XX	±.03		SCALE 9=32			
2	REDRAWN IN AUTOCAD	TAT 09-01-2004	ML	.XXX	±.005	TITLE OUTLINE			
1	NEW DRAWING	TRB 07-15-1999		.XXXX	±.0005	180T FR. - BB - TS - TEFC			
NO.	REVISION	BY & DATE	CHK	ANG	±1/2°	MAT'L.			
						FINISH			
						PREV			
THIS DRAWING IN DESIGN AND DETAIL IS OUR PROPERTY AND MUST NOT BE USED EXCEPT IN CONNECTION WITH OUR WORK ALL RIGHTS OF DESIGN AND INVENTION ARE RESERVED THIS IS AN ELECTRONICALLY GENERATED DOCUMENT - DO NOT SCALE THIS PRINT			RFP	CAD FILE ss63647ln		SIZE	DRAWING NO.	PAGE	OF
			DIST LB			A	SS63647LN		REV.
									2

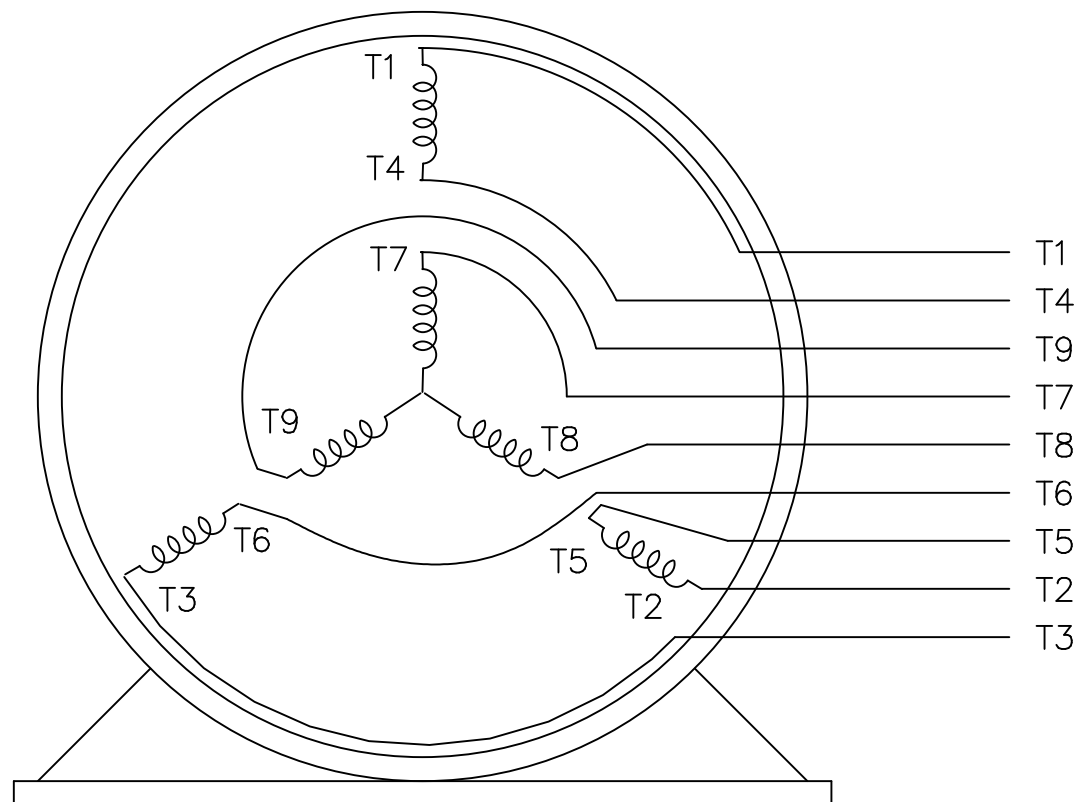
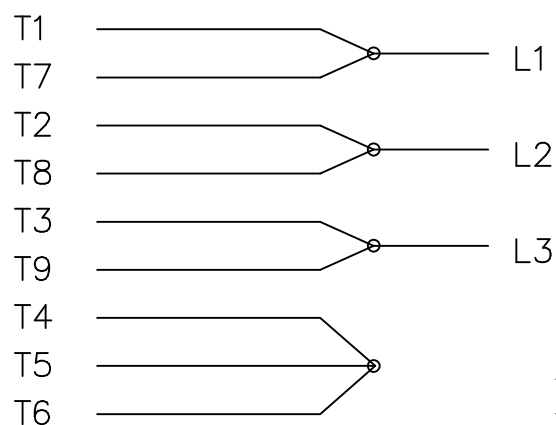
ERROR: undefined
OFFENDING COMMAND: Pscript_WinNT_C
STACK:

THREE PHASE
DUAL VOLTAGE MOTOR

HIGH VOLTAGE



LOW VOLTAGE




VIEW OF TERMINAL END

REF.
WINDING DIAGRAM

T8Y, T2Y, T2BL, T4BX, T2EC, T2G
T6BZ, T2B, T6BL, T4AV, T6B, T4B

OPTIONAL CORD
CONNECTION

L1 — WHITE
L2 — RED
L3 — BLACK

				TOLERANCES UNLESS SPECIFIED			DRAWN BLR 06/11/1999			
				DEC.	INCHES		CHK ML 06/18/1999			
				.X	±.1		APPD GK 06/18/1999			
3	ADDED THE OPTIONAL CORD CONNECTION MU46318	RDH 04/24/2003	DRS	.XX	±.02	TITLE CONNECTION DIAGRAM 3ø – DUAL VOLTAGE MOTOR	SCALE 1=1			
2	RE-ISSUE, ADDED '-' TO PART NUMBER	BLR 08/09/1999	GK	.XXX	±.005		REF			
1	NEW DRAWING	BLR 06/18/1999	GK	.XXXX	±.0005	MAT'L.	FMF			
NO.	REVISION	BY & DATE	CHK	ANG	±7'30"	FINISH	PREV			
THIS DRAWING IN DESIGN AND DETAIL IS OUR PROPERTY AND MUST NOT BE USED EXCEPT IN CONNECTION WITH OUR WORK ALL RIGHTS OF DESIGN AND INVENTION ARE RESERVED THIS IS AN ELECTRONICALLY GENERATED DOCUMENT – DO NOT SCALE THIS PRINT				RFP		CAD FILE EE7308LN	SIZE A	DRAWING NO. EE7308-LN	PAGE OF 3	REV. 3
				DIST WP						



1051 CHEYENNE AVE.
GRAFTON, WI 53024
PH. 262-277-8810

DATA VOLTS: 460

CERTIFICATION DATA SHEET

CONN. DIAGRAM: A-EE7308-LN
OUTLINE: A-SS63647LN-675
WINDING: 1842116

CAT #: LM15869

NONE 6

TYPICAL MOTOR PERFORMANCE DATA

HP	KW	SYNC RPM	FL RPM	FRAME	ENCLOSURE	TYPE	KVA CODE	DESIGN
5	3.7	3600	3505	184T	TEFC	TFS	J	B

PH	HZ	VOLTS	AMPS	START TYPE	DUTY	INSL	S.F.	AMB	ELEV.
3	60	230/460	11.8/5.9	ACROSS THE LINE	CONT	F	1.15	40	3300

F.L. EFF	88.5	3/4 LD EFF	89.0	1/2 LD EFF	88.4	GTD EFF		ELECT. TYPE	
F.L. PF	88.5	3/4 LD PF	85.5	1/2 LD PF	77.5	87.5		SQ CAGE IND RUN	

F.L. TORQUE	LR AMPS @ 460 V	L.R. TORQUE	B.D. TORQUE	F.L. RISE (° C)
7.5 LB-FT	40.5	12.0 LB-FT 160%	22.0 LB-FT 293%	50

PRESSURE @ 3	SOUND	POWER	ROTOR WK²	MAX. LOAD WK²	SAFE STALL TIME	STARTS/HOUR	MOTOR WGT
72 dBA	81 dBA		0.30 LB-FT²	5.5 LB-FT²	15 SEC.	2	125 LB.

*** SUPPLEMENTAL INFORMATION ***

DE BRACKET TYPE	ODE BRACKET TYPE	MOUNT TYPE	MOTOR ORIENTATION	SEVERE DUTY	HAZARDOUS LOCATION	DRIP COVER	SCREENS	PAINT
STANDARD	STANDARD	RIGID	HORIZONTAL	NO	NONE	NO	NONE	WATTSaver

BEARINGS	GREASE	SHAFT TYPE	SPECIAL DE	SPECIAL ODE	SHAFT MATERIAL	FRAME MATERIAL
DE ODE						
BALL BALL	POLYREX EM	T	NONE	NONE	1144 STRESSPROOF (C-223)	CAST IRON
206 205						

THERMOSTATS	PROTECTORS	WDG RTD's	BRG RTD's	THERMISTORS	CONTROL	SPACE HEATERS
NONE	NOT	NONE	NONE	NONE	FALSE	NA

R1 (ohms/ph)	R2 (ohms/ph)	X1 (ohms/ph)	X2 (ohms/ph)	Xm (ohms/ph)	VIBRATION (in/sec)	FLOAT
1.392	1.13	4.811	1.846	124.96	0.150	ODE

* N O T E S *		INVERTER TORQUE: NONE INV. HP SPEED RANGE: NONE
	ENCODER: NONE NONE NONE	NONE PPR

DATE: 9/11/2018	BRAKE: NONE NONE	NONE
	FT-LB: NA	
	VOLTAGE: NONE	HZ:
UL: V-INS, CONST UL REC		

Data Sheet

Date: 9/11/2018

LM15869



Data @ 460 V

Motor Load Data

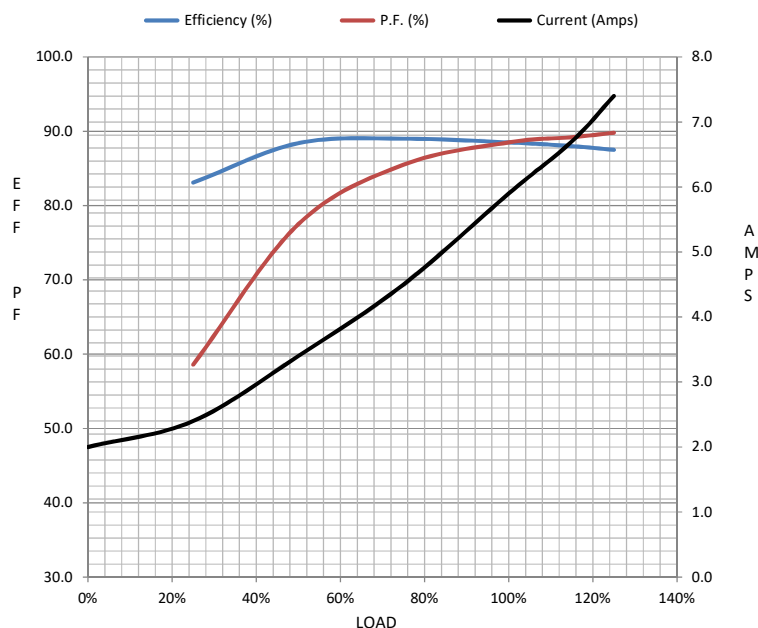
Load	0%	25%	50%	75%	100%	115%	125%	LR	
Current (Amps)	2.00	2.40	3.4	4.5	5.9	6.7	7.4	40.5	
Torque (ft-lb)	0.00	1.80	3.7	5.5	7.5	8.6	9.4	12.0	
RPM	3600	3580	3560	3535	3505	3,490	3480	0	
Efficiency (%)		83.1	88.4	89.0	88.5	88.0	87.5		
P.F. (%)	11.5	58.6	77.5	85.5	88.5	89.2	89.8	41.0	

Motor Speed Data

	LR	Pull-Up	BD	Rated	Idle
Speed (RPM)	0	1800	3000	3505	3600
Current (Amps)	40.5	37.0	25.5	5.9	2.00
Torque (ft-lb)	12.0	10.5	22.0	7.5	0.00

Information Block

HP	5.0			
Sync. RPM	3600			
Frame	184			
Enclosure	TEFC			
Construction	TFS			
Voltage	230/460 V			
Frequency	60 Hz			
Design	B			
LR Code letter	J			
Service Factor	1.15			
Temp Rise @ FL	50 ° C			
Duty	CONT			
Ambient	40 ° C			
Elevation	1,000 feet			
Rotor/Shaft wk²	0.30 Lb-Ft²			
Ref Wdg	1842116 NONE			
Sound Pressure @ 1M	72 dBA			
VFD Rating	NONE			
Outline Dwg	A-SS63647LN-675			
Conn. Diag	A-EE7308-LN			
Additional Specifications:				
0				
0				
EQUIV CKT (OHMS / PHASE)				
R1	R2	X1	X2	Xm
1.3920	1.1300	4.8110	1.8460	124.9600



Speed - Torque Curve

