

# PRODUCT INFORMATION PACKET



Model No: LM15672

Catalog No: LM15672

General Purpose Motor, 7.50 & 7.50 HP, 3 Ph, 60 & 50 Hz, 230/460 & 208/415 V, 1200 & 1000 RPM,  
254T Frame, TEFC



Regal and Leeson are trademarks of Regal Rexnord Corporation or one of its affiliated companies.

©2023 Regal Rexnord Corporation, All Rights Reserved. MC017097E



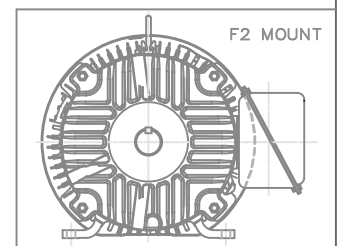
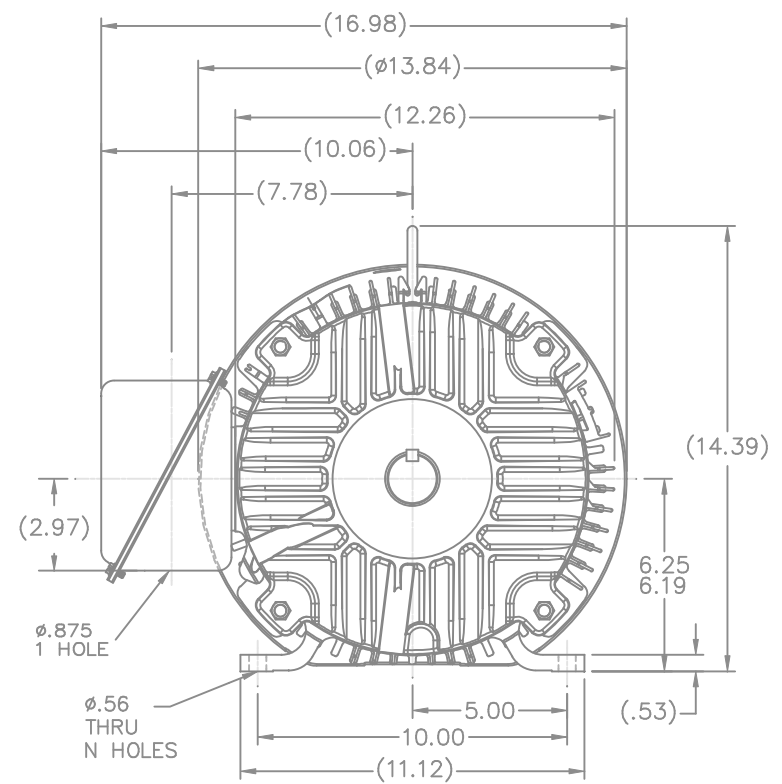
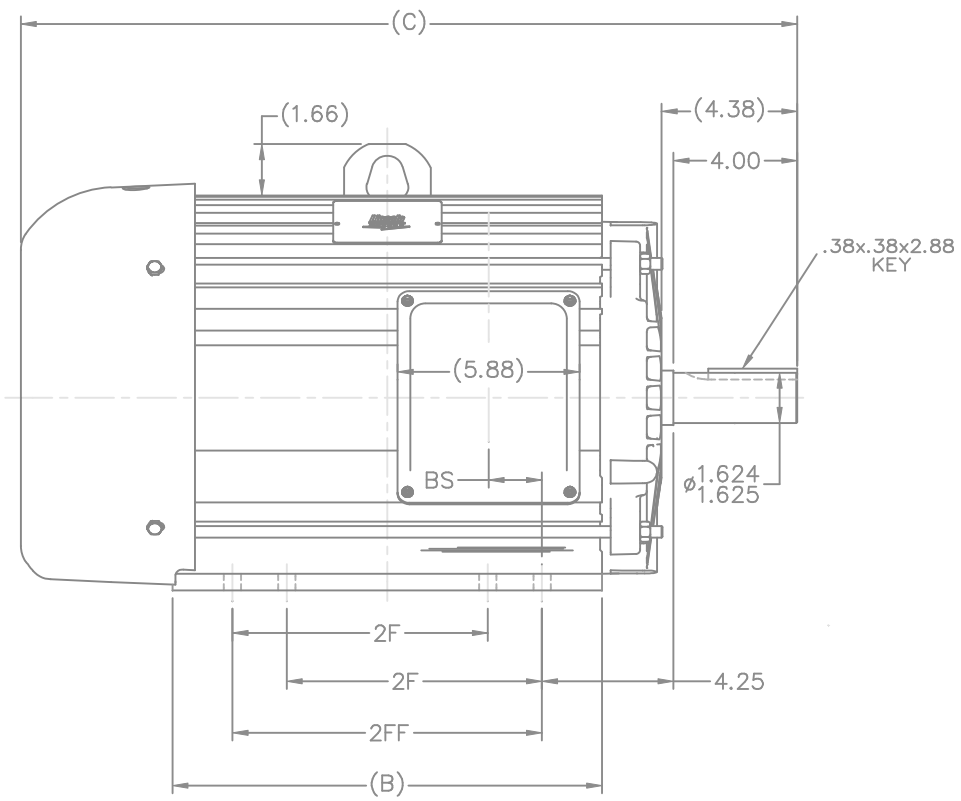


## Nameplate Specifications


Phase	3	Output HP	7.50 & 7.50 Hp
Output KW	5.6 & 5.6 kW	Voltage	230/460 & 208/415 V
Speed	1175 & 970 rpm	Service Factor	1.25 & 1.15
Frame	254T	Enclosure	Totally Enclosed Fan Cooled
Thermal Protection	No Protection	Efficiency	91 & 89.5 %
Ambient Temperature	40 °C	Frequency	60 & 50 Hz
Current	19.8/9.9 & 22/11 A	Power Factor	78
Duty	Continuous	Insulation Class	F
Design Code	B	KVA Code	H
Drive End Bearing Size	309	Opp Drive End Bearing Size	208
UL	Recognized	CSA	Y
CE	Y	IP Code	43
Number of Speeds	1		


## Technical Specifications

Electrical Type	Squirrel Cage Induction Run	Starting Method	Across The Line
Poles	6	Rotation	Reversible
Resistance Main	1.319 Ohms	Mounting	Rigid Base
Motor Orientation	Horizontal	Drive End Bearing	Ball
Opp Drive End Bearing	Ball	Frame Material	Aluminum
Shaft Type	T	Overall Length	23.40 in
Frame Length	12.00 in	Shaft Diameter	1.625 in
Shaft Extension	4 in	Assembly/Box Mounting	F1/F2 CAPABLE
Outline Drawing	SS321100LN-1200	Connection Drawing	EE7308-LN



NOTES:  
 1. CONDUIT BOX CAN BE ROTATED IN 90° STEPS.  
 2. NAMEPLATES TO BE READ FROM CONDUIT BOX SIDE OF MOTOR.

DASH	FR.	C	B	BS	2F	2FF	N
1200	254T	23.40	12.13	1.73	8.25		4
1375	254/6T	25.15	13.88	1.73	8.25	10.00	8

				TOLERANCES UNLESS SPECIFIED				DRAWN MJK 03-29-2004	
3	B DIM 12.13 WAS 12.00, AND 13.88 WAS 13.75 CN 29200-3584	MJK 05/18/2004	DEC.	INCHES	.X	±.1		CHK	ML 03-29-2004
2	25.15 WAS 25.65, 23.40 WAS 23.90 CN 32681	MJK 05/04/2004	.XX	±.03	TITLE OUTLINE			SCALE	1=4
1	(4.38) WAS (4.37), Ø1.624/1.625 WAS Ø1.624/1.624 CN 32681	MJK 04/29/2004	.XXX	±.005	250T FR - ALUM. FR. - TEFC			REF	
			.XXXX	±.0005	MAT'L			FIN	
NO.	REVISION	BY & DATE	CHK	ANG	±7°30"			FINISH	PREV
THIS DRAWING IN DESIGN AND DETAIL IS OUR PROPERTY AND MUST NOT BE USED EXCEPT IN CONNECTION WITH OUR WORK ALL RIGHTS OF DESIGN AND INVENTION ARE RESERVED THIS IS AN ELECTRONICALLY GENERATED DOCUMENT - DO NOT SCALE THIS PRINT			RFP	CAD FILE	ss321100ln		SIZE	DRAWING NO.	PAGE OF REV.
			DIST	LB			B	SS321100LN	3

THREE PHASE  
DUAL VOLTAGE MOTOR

## HIGH VOLTAGE




## LOW VOLTAGE

REF.  
WINDING DIAGRAM

T8Y, T2Y, T2BL, T4BX, T2EC, T2G  
T6BZ, T2B, T6BL, T4AV, T6B, T4B

OPTIONAL CORD  
CONNECTION

L1 — WHITE  
L2 — RED  
L3 — BLACK

				TOLERANCES UNLESS SPECIFIED			DRAWN BLR 06/11/1999			
				DEC.	INCHES		CHK ML 06/18/1999			
				.X	±.1		APPD GK 06/18/1999			
3	ADDED THE OPTIONAL CORD CONNECTION MU46318	RDH 04/24/2003	DRS	.XX	±.02	TITLE CONNECTION DIAGRAM 3ø – DUAL VOLTAGE MOTOR	SCALE 1=1			
2	RE-ISSUE, ADDED '-' TO PART NUMBER	BLR 08/09/1999	GK	.XXX	±.005		REF			
1	NEW DRAWING	BLR 06/18/1999	GK	.XXXX	±.0005	MAT'L.	FMF			
NO.	REVISION	BY & DATE	CHK	ANG	±7'30"	FINISH	PREV			
THIS DRAWING IN DESIGN AND DETAIL IS OUR PROPERTY AND MUST NOT BE USED EXCEPT IN CONNECTION WITH OUR WORK ALL RIGHTS OF DESIGN AND INVENTION ARE RESERVED THIS IS AN ELECTRONICALLY GENERATED DOCUMENT – DO NOT SCALE THIS PRINT				RFP		CAD FILE EE7308LN	SIZE	DRAWING NO.	PAGE OF	REV.
				DIST WP			A	EE7308-LN		3



**CERTIFICATION DATA SHEET**

**2100 WASHINGTON ST.  
GRAFTON, WI  
PH. 262-277-8810**

**CONN. DIAGRAM:** A-EE7308-LN

**OUTLINE:** B-SS321100LN-1200

**CATALOG :** LM15672

**WINDING #:** 254653 R14 6

**MOUNTING:** F1/F2 CAPABLE

**TYPICAL MOTOR PERFORMANCE DATA**

HP	kW	SYNC. RPM	F.L. RPM	FRAME	ENCLOSURE	KVA CODE	DESIGN
7 1/2 & 7 1/2	5.60 & 5.60	1200	1175 & 970	254T	TEFC	H	B

PH	Hz	VOLTS	AMPS	START TYPE	DUTY	INSL	S.F.	AMB°C
3	60/50	230/460 & 208/415	19.8/9.9 & 22/11	ACROSS THE LINE	CONTINUOUS	F3	1.25/1.15	40

<b>FULL LOAD EFF:</b>	91 & 89.5	<b>3/4 LOAD EFF:</b>	91	<b>1/2 LOAD EFF:</b>	90.2	<b>GTD. EFF</b>		<b>ELEC. TYPE</b>
<b>FULL LOAD PF:</b>	78 & 79	<b>3/4 LOAD PF:</b>	72.5	<b>1/2 LOAD PF:</b>	61	90.2		SQ CAGE IND RUN

F.L. TORQUE	LOCKED ROTOR AMPS	L.R. TORQUE	B.D. TORQUE	F.L. RISE°C
33.5 LB-FT	127 / 63.5	72 LB-FT 215 %	103 LB-FT 307 %	40

SOUND PRESSURE @ 3 FT.	SOUND POWER	ROTOR WK^2	MAX. WK^2	SAFE STALL TIME	STARTS / HOUR	APPROX. MOTOR WGT
56 dBA	66 dBA	2.5 LB-FT^2	170 LB-FT^2	20 SEC.	2	350 LBS.

**\*\*\* SUPPLEMENTAL INFORMATION \*\*\***

DE BRACKET TYPE	ODE BRACKET TYPE	MOUNT TYPE	ORIENTATION	SEVERE DUTY	HAZARDOUS LOCATION	DRIP COVER	SCREENS	PAINT
STANDARD	STANDARD	RIGID	HORIZONTAL	FALSE	NONE	FALSE	NONE	GRAY (ENAMEL)

BEARINGS		GREASE	SHAFT TYPE	SPECIAL DE	SPECIAL ODE	SHAFT MATERIAL	FRAME MATERIAL
DE	ODE						
BALL	BALL						
309	208	POLYREX EM	T	NONE	NONE	1045 HOT ROLLED (C-204)	ALUMINUM

THERMO-PROTECTORS				THERMISTORS	CONTROL	SPACE HEATERS
THERMOSTATS	PROTECTORS	WDG RTDs	BRG RTDs			
NONE	NOT	NONE	NONE	NONE	FALSE	NONE VOLTS

\*  
  
N  
  
O  
  
T  
  
E  
  
S  
  
\*

<b>INVERTER TORQUE:</b>	NONE
<b>INV. HP SPEED RANGE:</b>	NONE
<b>ENCODER:</b>	NONE
	NONE NONE
	NONE NONE PPR
<b>BRAKE:</b>	NONE NONE
	NONE P/N NONE
	NONE NONE
	FT-LB V NONE Hz

## Data Sheet

Date: 1/31/2018

LM15672



Data @ 460 V

## Motor Load Data

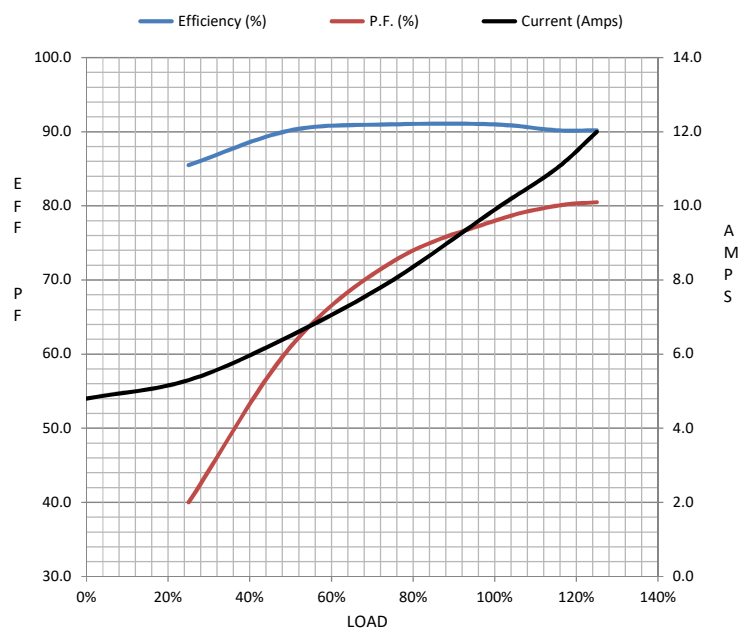
Load	0%	25%	50%	75%	100%	115%	125%	LR	
Current (Amps)	4.8	5.3	6.5	8.0	9.9	11.0	12.0	63.5	
Torque (ft-lb)	0.00	8.0	16.5	25.0	33.5	38.5	42.0	72.0	
RPM	1200	1195	1190	1180	1175	1,170	1165	0	
Efficiency (%)		85.5	90.2	91.0	91.0	90.2	90.2		
P.F. (%)	7.0	40.0	61.0	72.5	78.0	80.0	80.5	42.0	

## Motor Speed Data

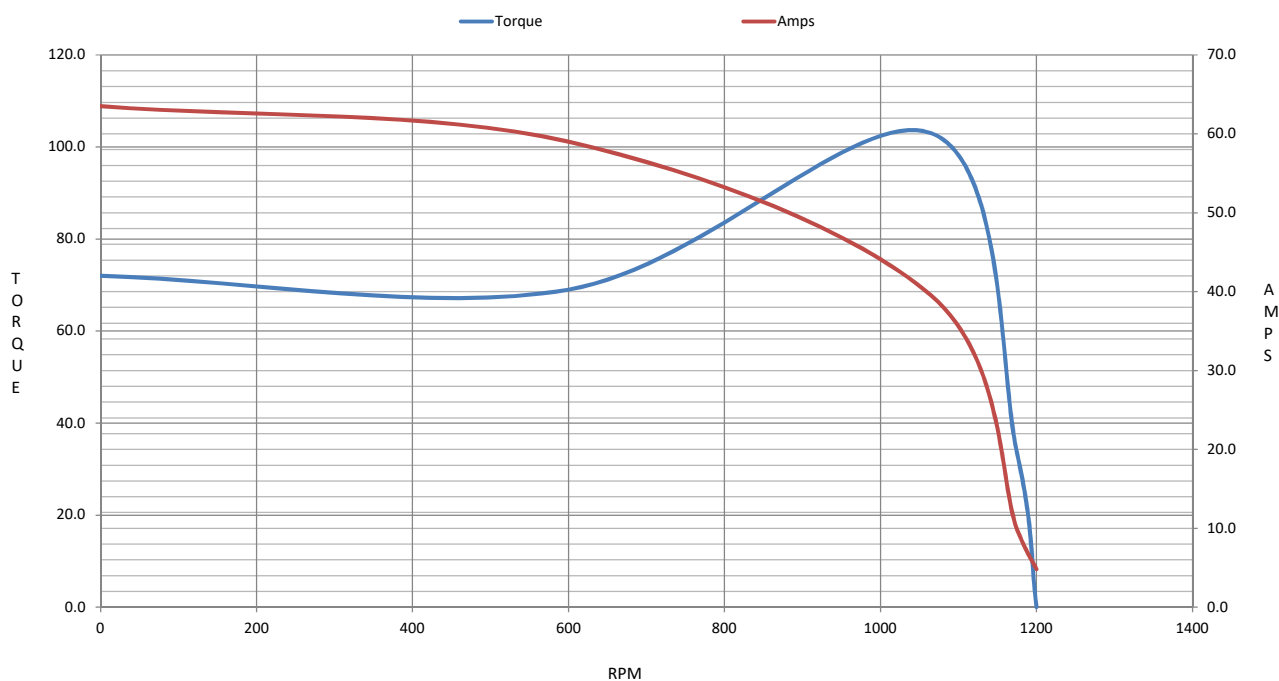
	LR	Pull-Up	BD	Rated	Idle
Speed (RPM)	0	600	1065	1175	1200
Current (Amps)	63.5	59.0	39.5	9.9	4.8
Torque (ft-lb)	72.0	69.0	103	33.5	0.00

## Information Block

HP	7.5			
Sync. RPM	1200			
Frame	254			
Enclosure	TEFC			
Construction	TFY			
Voltage	230/460#208/415	V		
Frequency	60	Hz		
Design	B			
LR Code letter	H			
Service Factor	1.15			
Temp Rise @ FL	40	° C		
Duty	CONT			
Ambient	40	° C		
Elevation	1,000	feet		
Rotor/Shaft wk²	2.50	Lb-Ft²		
Ref Wdg	254653	R14		
Sound Pressure @ 1M	56	dBA		
VFD Rating	NONE			
Outline Dwg	B-SS321100LN-1200			
Conn. Diag	A-EE7308-LN			
Additional Specifications:				
0				
0				
EQUIV CKT (OHMS / PHASE)				
R1	R2	X1	X2	Xm
0.7370	0.6730	2.9030	3.1530	53.4870



## Speed - Torque Curve



## EC Declaration of Conformity

The undersigned representing  
the manufacturer:

Regal Beloit America  
100 East Randolph St.  
Wausau, WI 54401

and the authorized representative  
established within the Community:

Marathon Electric UK  
6F Thistleton Road Ind. Estate  
Market Overton  
Oakham, Rutland LE15 7PP UK

are committed to providing customers with products that comply with applicable regulations and international protocols to which they are subject, including the requirements of the European Parliament Directive on the Harmonization of the laws relating to electrical equipment designed for use within certain voltage limits (2014/35/EU).

Regal Beloit America declares that the following product(s), to which this declaration relates, are in conformity with the relevant sections of the EC standards listed below.

This statement supersedes any statements previously issued pertaining to the product(s) listed below and is subject to change without notice.

Model No : LM15672

(Model No. may contain prefix and/or suffix characters)

Catalog No : LM15672

Rework No : N/A

Directives :

Low Voltage Directive 2014/35/EU

Harmonized Standards Used :

EN 60034-1: 2010 (IEC 60034-1: 2010)

EN 60034-5: 2001/A1:2007 (IEC 60034-5: 2000/A1:2006)

Authorized Representative:



Michael A. Logsdon  
Vice President, Technology

Authorized Representative in the Community:



Julian Clark  
Marketing Engineer

Created on 09/01/2022

**CE 22**