

PRODUCT INFORMATION PACKET



Model No: LM15570

Catalog No: LM15570

General Purpose Motor, 60 & 60 HP, 3 Ph, 60 & 50 Hz, 230/460 & 190-208/380-415 V, 1800 & 1500 RPM,
364TC Frame, DP



Regal and Leeson are trademarks of Regal Rexnord Corporation or one of its affiliated companies.

©2023 Regal Rexnord Corporation, All Rights Reserved. MC017097E





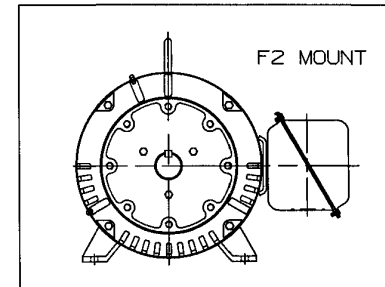
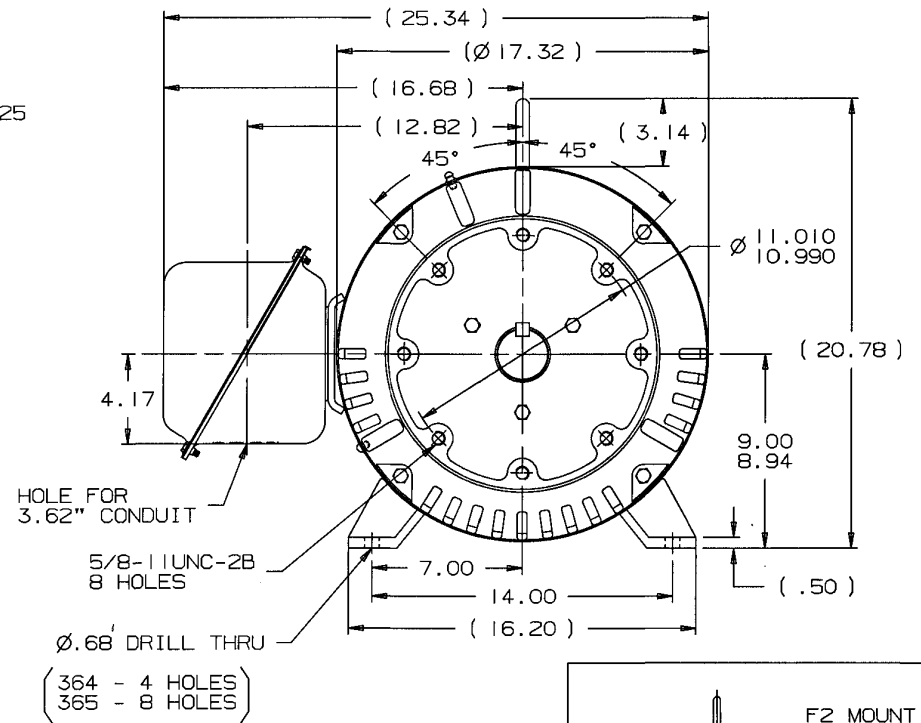
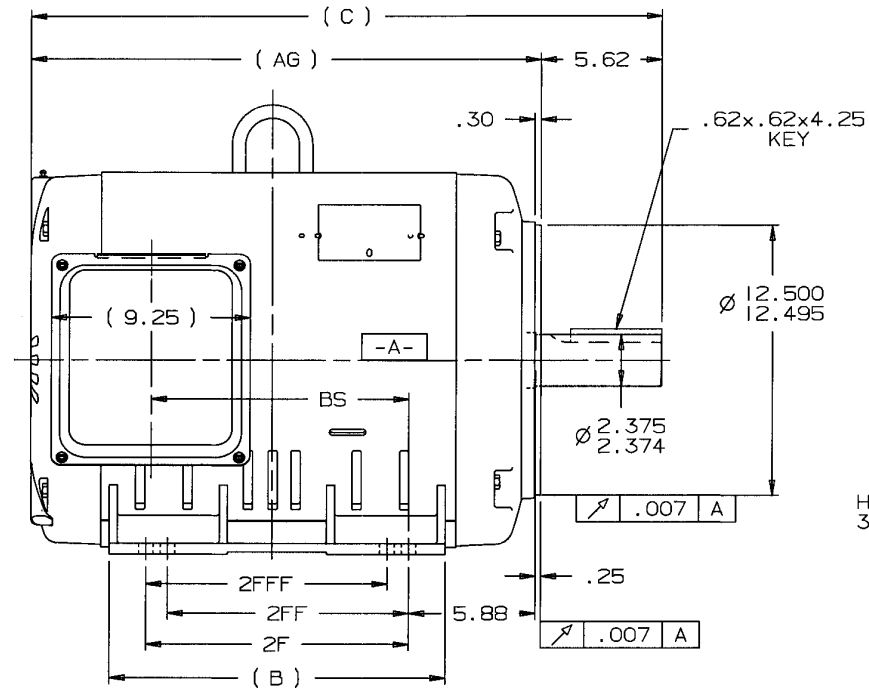
Nameplate Specifications

Phase	3	Output HP	60 & 60 Hp
Output KW	45.0 & 45.0 kW	Voltage	230/460 & 190-208/380-415 V
Speed	1785 & 1478 rpm	Service Factor	1.25 & 1.15
Frame	364TC	Enclosure	Drip Proof
Thermal Protection	No Protection	Efficiency	95 & 94.1 %
Ambient Temperature	40 °C	Frequency	60 & 50 Hz
Current	140/70 & 167-154/83.5-77 A	Power Factor	84
Duty	Continuous	Insulation Class	F
Design Code	B	KVA Code	G
Drive End Bearing Size	313	Opp Drive End Bearing Size	311
UL	Recognized	CSA	Y
CE	Y	IP Code	22
Number of Speeds	1		

Technical Specifications

Electrical Type	Squirrel Cage Induction Run	Starting Method	Wye Start Delta Run
Poles	4	Rotation	Reversible
Resistance Main	.068 Ohms	Mounting	Rigid Base
Motor Orientation	Horizontal	Drive End Bearing	Ball
Opp Drive End Bearing	Ball	Frame Material	Rolled Steel
Shaft Type	T	Overall Length	28.35 in
Frame Length	15.48 in	Shaft Diameter	2.375 in
Shaft Extension	5.88 in	Assembly/Box Mounting	F1/F2 CAPABLE
Outline Drawing	XH2D1SC1-1548	Connection Drawing	A-EE7308AA-LN

B-XH2D1SC1



- NOTES:
 1. CONDUIT BOX CAN BE ROTATED IN 90° STEPS.
 2. NAMEPLATES TO BE READ FROM CONDUIT BOX SIDE OF MOTOR.

DASH	FRAME	C	AG	B	2F	2FF	2FFF	BS
1548	364TC	28.35	22.73	14.61	11.25	---	---	11.02
1648	365TC	29.35	23.73	15.61	12.25	11.25	11.25	12.02

				TOLERANCES UNLESS SPECIFIED		TITLE	DRAWN DRS 01-07-2002
				DEC.	TOLERANCE		
				.X	±.1	OUTLINE NEMA MOTORS 360TC ODP UE - DE - C'FACE	CHK ML 01-16-2002
				.XX	±.03		APPD HNN 01-23-2002
				.XXX	±.005		SCALE
1 NEW DRAWING MU40112				DRS	01-23-2002	SURFACE ROUGHNESS UNLESS SPECIFIED	REF
NO. REVISION				BY	DATE		FMF
THIS DRAWING IN DESIGN AND DETAIL IS OUR PROPERTY AND MUST NOT BE USED EXCEPT IN CONNECTION WITH OUR WORK. ALL RIGHTS OF DESIGN AND INVENTION ARE RESERVED. THIS IS AN ELECTRONICALLY GENERATED DOCUMENT - DO NOT SCALE THIS PRINT				CHK	ANG	±.0005	PREV
				PURCHASED	CAD FILE XH2D1SC1		SIZE
				DIST	BY		DRAWING NO.
							B XH2D1SC1
							REV.

T12 _____
 T1 _____
 T6 _____ L1
 T7 _____

T2 _____
 T4 _____
 T8 _____ L2
 T10 _____

T3 _____
 T5 _____
 T9 _____ L3
 T11 _____

LOW VOLTAGE

T12 _____ L1
 T1 _____

T4 _____
 T7 _____

T2 _____ L2
 T10 _____

T5 _____
 T8 _____

T3 _____ L3
 T11 _____

T6 _____
 T9 _____

HIGH VOLTAGE



VIEW OF TERMINAL END

					✓ UNLESS OTHERWISE SPECIFIED DIMENSIONS ARE IN INCHES TOL. ON XX±.02 XXX±.005 XXXX±.0005 ANGLES± 7°30"		
2	08-09-1999	RE-ISSUE, ADDED '-' TO PART NUMBER	BLR		MAX. SURFACE ROUGHNESS UNLESS OTHERWISE NOTED		DRAWN BY TRB 07-16-1999
					FINISH		CHKD BY ML 06-18-1999
1	06-18-1999	NEW DRAWING	TRB		MATERIAL		APPD BY GK 06-18-1999
REV	DATE	CHANGE	NAME	PART NAME 3 PHASE CONNECTION DIAGRAM 2/1 DELTA - 12 LEADS			DRWG NO A- EE7308AA-LN
				PURCHASED	CADD FILE NO.	EE7308AALN	

ERROR: undefined
OFFENDING COMMAND: Pscrip
STACK:



CERTIFICATION DATA SHEET

2100 WASHINGTON ST.
GRAFTON, WI
PH. 262-277-8810

CONN. DIAGRAM: A-EE7308AA-LN

OUTLINE: XH2D1SC1-1548

CATALOG : LM15570

WINDING #: L3644011 1

MOUNTING: F1/F2 CAPABLE

TYPICAL MOTOR PERFORMANCE DATA

HP	kW	SYNC. RPM	F.L. RPM	FRAME	ENCLOSURE	KVA CODE	DESIGN
60&60	45.0&45.0	1800	1785&1478	364TC	DP	G	B

PH	Hz	VOLTS	AMPS	START TYPE	DUTY	INSL	S.F.	AMB° C
3	60/50	230/460&190-208/380-415	140/70&167-154/83.5-77	WYE START DELTA RUN	CONTINUOUS	F1	1.25/1.15	40

FULL LOAD EFF:	95&94.1	3/4 LOAD EFF:	94.5	1/2 LOAD EFF:	93.6	GTD. EFF	ELEC. TYPE
FULL LOAD PF:	84&85	3/4 LOAD PF:	81	1/2 LOAD PF:	73.5	94.1	SQ CAGE IND RUN

F.L. TORQUE	LOCKED ROTOR AMPS	L.R. TORQUE	B.D. TORQUE	F.L. RISE°C
177 LB-FT	870 / 435	330 LB-FT 186 %	450 LB-FT 254 %	30

SOUND PRESSURE @ 3 FT.	SOUND POWER	ROTOR WK^2	MAX. WK^2	SAFE STALL TIME	STARTS / HOUR	APPROX. MOTOR WGT
76 dBA	86 dBA	0 LB-FT^2	- LB-FT^2	- SEC.	-	- LBS.

*** SUPPLEMENTAL INFORMATION ***

DE BRACKET TYPE	ODE BRACKET TYPE	MOUNT TYPE	ORIENTATION	SEVERE DUTY	HAZARDOUS LOCATION	DRIP COVER	SCREENS	PAINT
C-FACE	STANDARD	RIGID	HORIZONTAL	FALSE	NONE	FALSE	NONE	GRAY - LINCOLN

BEARINGS		GREASE	SHAFT TYPE	SPECIAL DE	SPECIAL ODE	SHAFT MATERIAL	FRAME MATERIAL
DE	ODE						
BALL	BALL	POLYREX EM	T	NONE	NONE	1045 HOT ROLLED (C-204)	ROLLED STEEL
313	311						

THERMO-PROTECTORS				THERMISTORS	CONTROL	SPACE HEATERS
THERMOSTATS	PROTECTORS	WDG RTDs	BRG RTDs			
NONE	NOT	NONE	NONE	NONE	FALSE	NONE VOLTS

*

N

O

T

E

S

INVERTER TORQUE: NONE
INV. HP SPEED RANGE: NONE
ENCODER: NONE
NONE NONE
NONE NONE PPR
BRAKE: NONE NONE
NONE P/N NONE
NONE NONE
NONE FT-LB NONE V NONE Hz

Data Sheet

Date: 1/31/2018

LM15570



Data @ 460 V

Motor Load Data

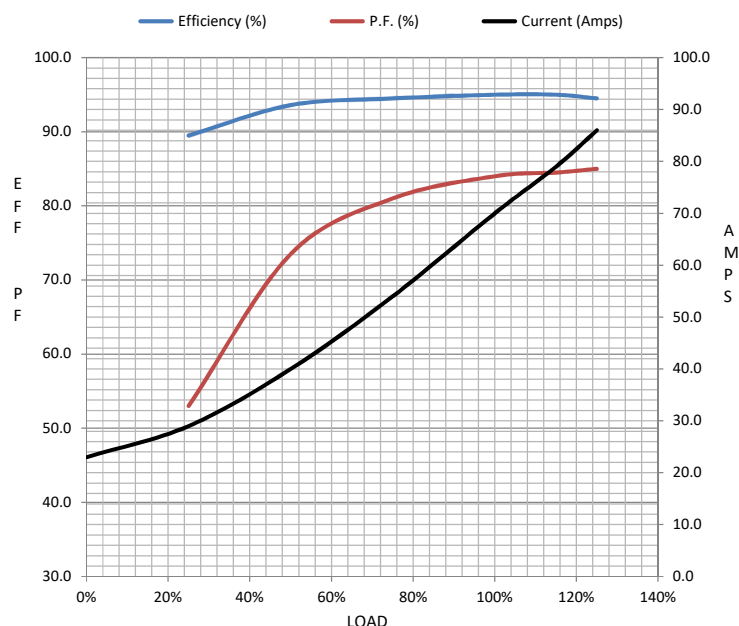
Load	0%	25%	50%	75%	100%	115%	125%	LR	
Current (Amps)	23.0	29.0	40.0	54.0	70.0	79.0	86.0	435	
Torque (ft-lb)	0.00	44.0	88.0	132	177	203	221	330	
RPM	1800	1795	1792	1788	1785	1782	1780	0	
Efficiency (%)		89.5	93.6	94.5	95.0	95.0	94.5		
P.F. (%)	5.0	53.0	73.5	81.0	84.0	84.5	85.0	28.0	

Motor Speed Data

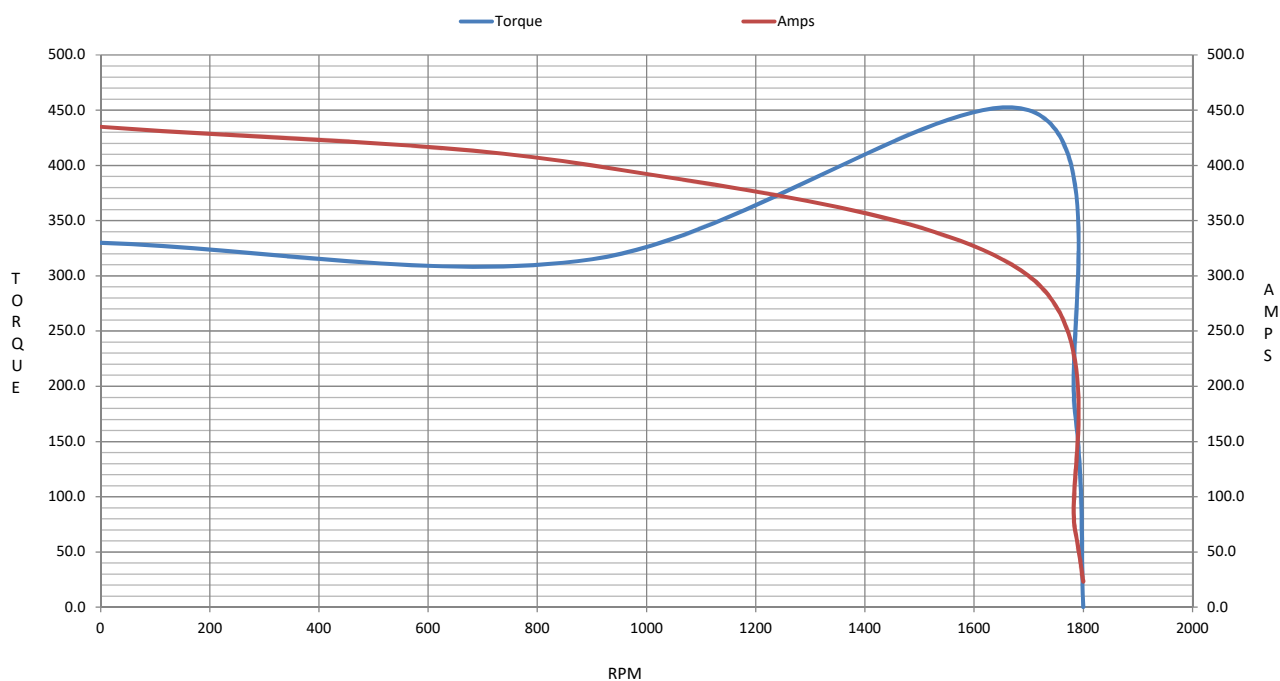
	LR	Pull-Up	BD	Rated	Idle
Speed (RPM)	0	900	1700	1785	1800
Current (Amps)	435	400	300	70.0	23.0
Torque (ft-lb)	330	315	450	177	0.00

Information Block

HP	60.0			
Sync. RPM	1800			
Frame	364			
Enclosure	DP			
Construction	TDR			
Voltage	230/460#380-415	V		
Frequency	60	Hz		
Design	A			
LR Code letter	G			
Service Factor	1.15			
Temp Rise @ FL	30	° C		
Duty	CONT			
Ambient	40	° C		
Elevation	1,000	feet		
Rotor/Shaft wk²	0.00	Lb-Ft²		
Ref Wdg	L3644011	NONE		
Sound Pressure @ 1M	76	dBA		
VFD Rating	NONE			
Outline Dwg	XH2D1SC1-1548			
Conn. Diag	A-EE7308AA-LN			
Additional Specifications:				
0				
0				
EQUIV CKT (OHMS / PHASE)				
R1	R2	X1	X2	Xm
0.0470	0.0330	0.3410	0.5340	9.6020



Speed - Torque Curve



EC Declaration of Conformity

The undersigned representing
the manufacturer:

Regal Beloit America
100 East Randolph St.
Wausau, WI 54401

and the authorized representative
established within the Community:

Marathon Electric UK
6F Thistleton Road Ind. Estate
Market Overton
Oakham, Rutland LE15 7PP UK

are committed to providing customers with products that comply with applicable regulations and international protocols to which they are subject, including the requirements of the European Parliament Directive on the Harmonization of the laws relating to electrical equipment designed for use within certain voltage limits (2014/35/EU).

Regal Beloit America declares that the following product(s), to which this declaration relates, are in conformity with the relevant sections of the EC standards listed below.

This statement supersedes any statements previously issued pertaining to the product(s) listed below and is subject to change without notice.

Model No : LM15570

(Model No. may contain prefix and/or suffix characters)

Catalog No : LM15570

Rework No : N/A

Directives :

Low Voltage Directive 2014/35/EU

Harmonized Standards Used :

EN 60034-1: 2010 (IEC 60034-1: 2010)

EN 60034-5: 2001/A1:2007 (IEC 60034-5: 2000/A1:2006)

Authorized Representative:



Michael A. Logsdon
Vice President, Technology

Authorized Representative in the Community:



Julian Clark
Marketing Engineer

Created on 12/29/2022

CE 22