

# PRODUCT INFORMATION PACKET



Model No: LM15122  
Catalog No: LM15122  
200 HP Special Voltage Motor, 3 phase, 3600 RPM, 575 V, 445TS Frame, TEFC  
Special Voltage Motors

Regal and Leeson are trademarks of Regal Rexnord Corporation or one of its affiliated companies.  
©2021 Regal Rexnord Corporation, All Rights Reserved. MC017097E





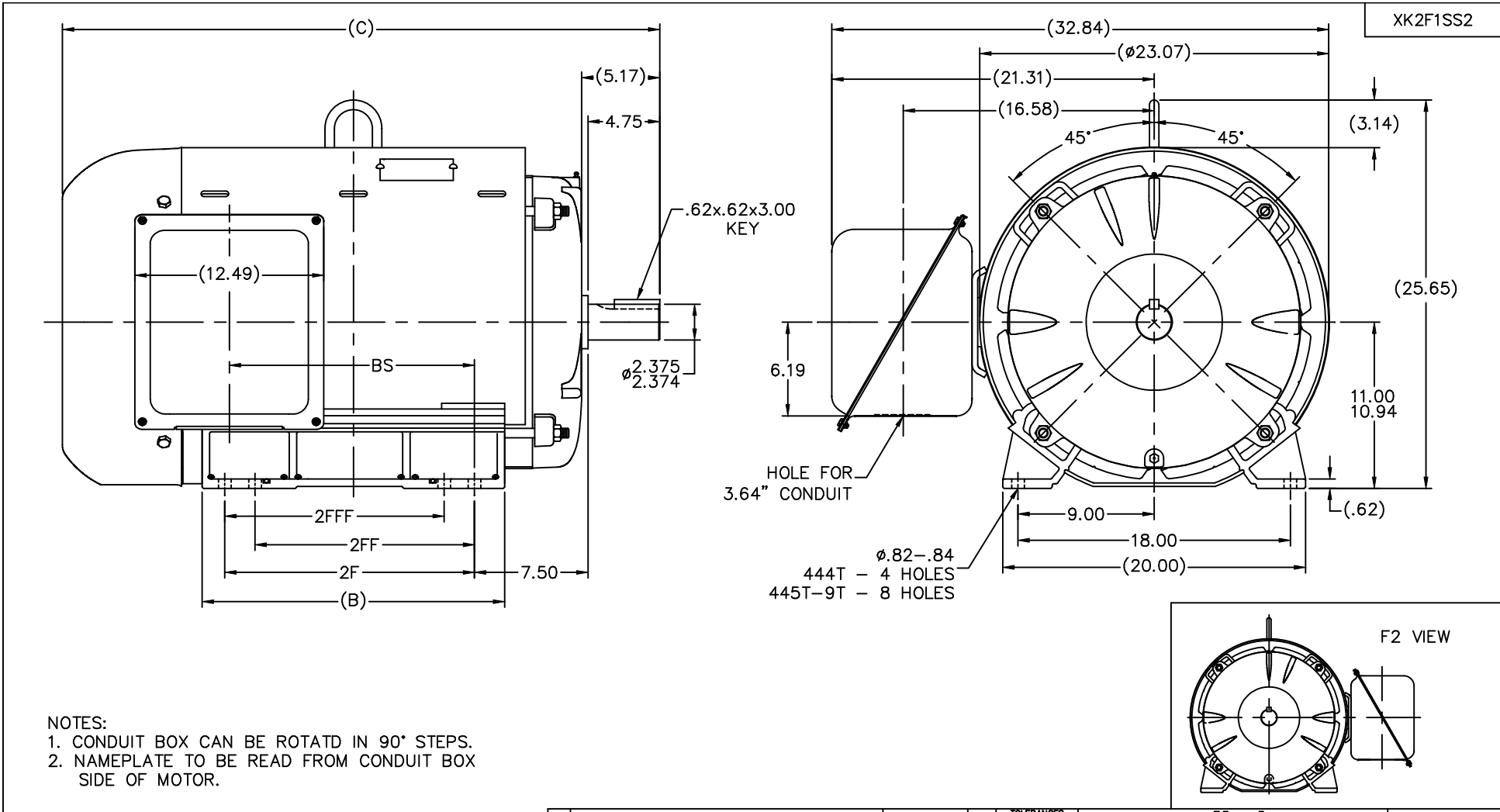
### Nameplate Specifications


Output HP	200 Hp	Output KW	149.0 kW
Frequency	60 Hz	Voltage	575 V
Current	170.0 A	Speed	3573 rpm
Service Factor	1.15	Phase	3
Efficiency	95.8 %	Power Factor	92.5
Duty	Continuous	Insulation Class	F
Design Code	B	KVA Code	F
Frame	445TS	Enclosure	Totally Enclosed Fan Cooled
Thermal Protection	No	Ambient Temperature	40 °C
Drive End Bearing Size	6315	Opp Drive End Bearing Size	6315
UL	Recognized	CSA	Y
CE	Y	IP Code	43
Number of Speeds	1		

### Technical Specifications

Electrical Type	Squirrel Cage Induction Run	Starting Method	Wye Start Delta Run
Poles	2	Rotation	Reversible
Resistance Main	.0207 Ohms	Mounting	Rigid Base
Motor Orientation	Horizontal	Drive End Bearing	Ball
Opp Drive End Bearing	Ball	Frame Material	Rolled Steel
Shaft Type	TS	Overall Length	39.49 in
Frame Length	23.91 in	Shaft Diameter	2.375 in
Shaft Extension	4.75 in	Assembly/Box Mounting	F1/F2 CAPABLE
Connection Drawing	A-EE7340-LN	Outline Drawing	XK2F1SS2-2317

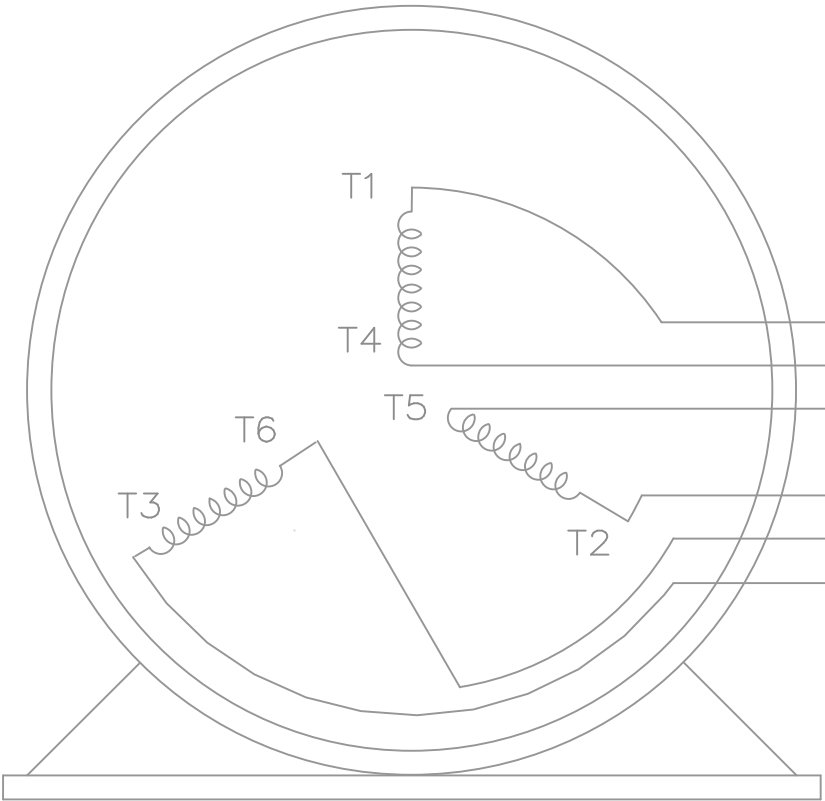
This is an uncontrolled document once printed or downloaded and is subject to change without notice. Date Created:10/27/2021



									TOLERANCES UNLESS SPECIFIED					DRAWN HLB 09-04-2001									
									DEC. INCHES					CHK DRS 09-05-2001									
									.X ±.1					APPD TB 09-05-2001									
2117	444TS	37.49		18.00	14.50			14.20	3	ADDED DRAIN PLUG PER BRACKET CHANGE CN 37358	MSG 05-10-2004	ML	.XX ±.03	TITLE OUTLINE NEMA MOTORS									
2317	445TS	39.49		20.00	16.50	14.50	14.50	16.20	2	REVISED 2FF & 2FFF DIMENSIONS PER CN 29200-2093	MSG 10-30-2001		.XXX ±.005	440TS TEFC UE									
2667	447TS	42.99		23.50	20.00	16.50	16.50	19.70	1	NEW DRAWING - MU38667	HLB 09-05-2001		.XXXX ±.0005	MAT'L									
3167	449TS	47.99		28.50	25.00	20.00	20.00	23.95	NO.	REVISION	BY & DATE	CHK	ANG ±7°30"	FINISH									
									THIS DRAWING IN DESIGN AND DETAIL IS OUR PROPERTY AND MUST NOT BE USED EXCEPT IN CONNECTION WITH OUR WORK ALL RIGHTS OF DESIGN AND INVENTION ARE RESERVED THIS IS AN ELECTRONICALLY GENERATED DOCUMENT - DO NOT SCALE THIS PRINT						RFP		CAD FILE XK2F1SS2		SIZE	DRAWING NO.	PAGE	OF	REV.
DASH	FRAME	C	AG	B	2F	2FF	2FFF	BS							DIST BY		B		XK2F1SS2				3



THREE PHASE — Y START  
 Δ RUN MOTOR




T1 (U1)  
 T4 (U2)  
 T5 (V2)  
 T2 (V1)  
 T6 (W2)  
 T3 (W1)

T6CK  
 T6BM  
 T4CC  
 T2DL  
 T4C

NOTE:  
 IEC LEAD MARKINGS ARE NOTED  
 IN PARENTHESES

VIEW OF TERMINAL END

			TOLERANCES UNLESS SPECIFIED			DRAWN BLR 10-04-1999			
			DEC.	INCHES		CHK DRS 10-04-1999			
			.X	±.1		APPD TB 10-04-1999			
3	REVISED TO MATCH M.E. ORIGINAL	TAT 07-25-2005	ML	.XX	±.02	TITLE CONNECTION DIAGRAM 3Ø — WYE START DELTA RUN	SCALE 1=1		
2	REVISED DRAWING MISTAKE CN 29200-2980	ERH 05-15-2003	ML	.XXX	±.005		REF		
1	NEW DRAWING	BLR 10-09-1999		.XXXX	±.0005		FMF		
NO.	REVISION	BY & DATE	CHK	ANG	±'30"	FINISH	PREV		
THIS DRAWING IN DESIGN AND DETAIL IS OUR PROPERTY AND MUST NOT BE USED EXCEPT IN CONNECTION WITH OUR WORK ALL RIGHTS OF DESIGN AND INVENTION ARE RESERVED THIS IS AN ELECTRONICALLY GENERATED DOCUMENT — DO NOT SCALE THIS PRINT			RFP	CAD FILE ee7340_In		SIZE A	DRAWING NO.	PAGE OF	REV.
			DIST	WA-LB-SB			EE7340-LN	3	3