

PRODUCT INFORMATION PACKET



Model No: LM14815

Catalog No: LM14815

General Purpose Motor, 75 & 75 HP, 3 Ph, 60 & 50 Hz, 230/460 & 380-415 V, 1800 & 1500 RPM,
365T Frame, DP



Regal and Leeson are trademarks of Regal Rexnord Corporation or one of its affiliated companies.

©2023 Regal Rexnord Corporation, All Rights Reserved. MC017097E





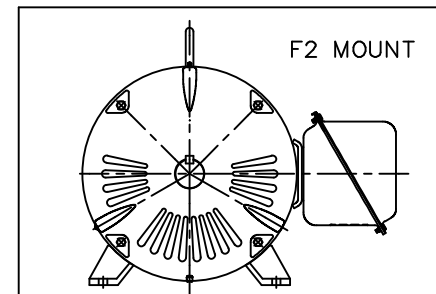
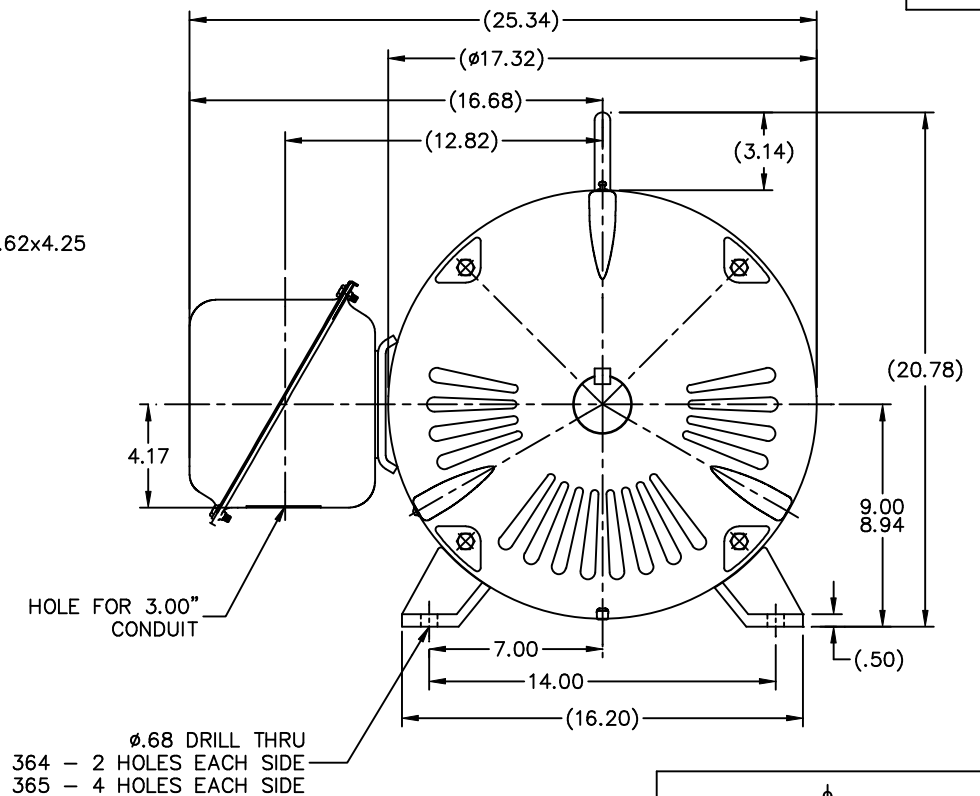
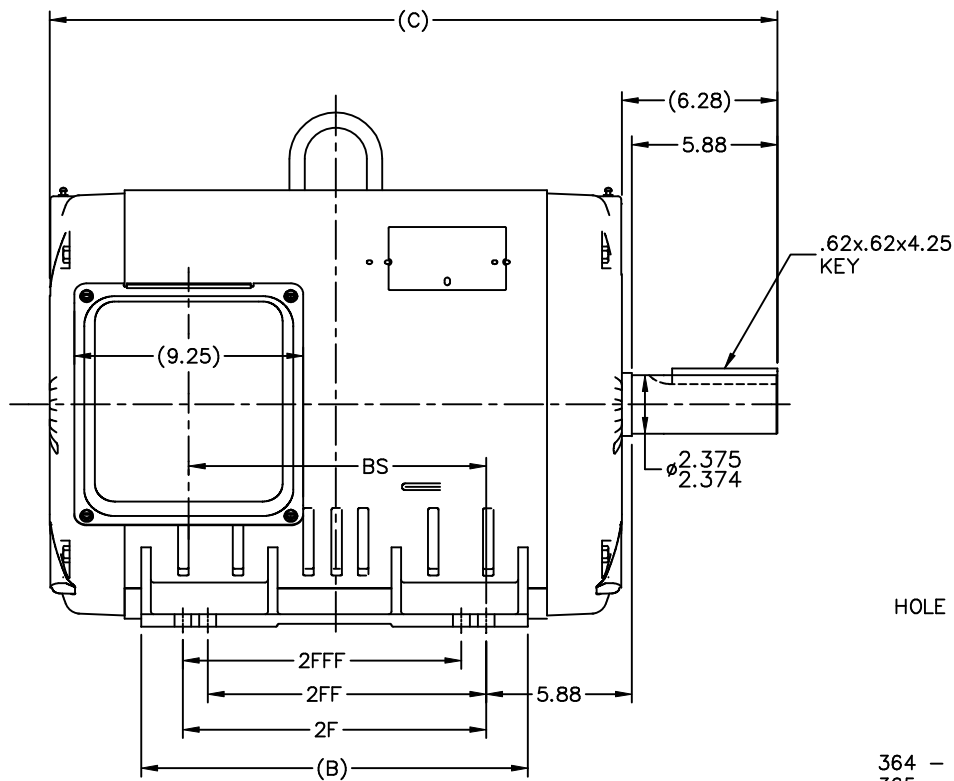
Nameplate Specifications

| | | | |
|------------------------|--------------------|----------------------------|---------------------|
| Phase | 3 | Output HP | 75 & 75 Hp |
| Output KW | 56.0 & 56.0 kW | Voltage | 230/460 & 380-415 V |
| Speed | 1782 & 1475 rpm | Service Factor | 1.25 & 1.15 |
| Frame | 365T | Enclosure | Drip Proof |
| Thermal Protection | No Protection | Efficiency | 95 & 94.1 % |
| Ambient Temperature | 40 °C | Frequency | 60 & 50 Hz |
| Current | 176/88 & 106-100 A | Power Factor | 84 |
| Duty | Continuous | Insulation Class | F |
| Design Code | BC | KVA Code | G |
| Drive End Bearing Size | 6213 | Opp Drive End Bearing Size | 6311 |
| UL | Recognized | CSA | Y |
| CE | Y | IP Code | 22 |
| Number of Speeds | 1 | | |

Technical Specifications

| | | | |
|-----------------------|-----------------------------|-----------------------|---------------------|
| Electrical Type | Squirrel Cage Induction Run | Starting Method | Wye Start Delta Run |
| Poles | 4 | Rotation | Reversible |
| Resistance Main | .067 Ohms | Mounting | Rigid Base |
| Motor Orientation | Horizontal | Drive End Bearing | Ball |
| Opp Drive End Bearing | Ball | Frame Material | Rolled Steel |
| Shaft Type | T | Overall Length | 29.40 in |
| Frame Length | 16.48 in | Shaft Diameter | 2.375 in |
| Shaft Extension | 5.88 in | Assembly/Box Mounting | F1 ONLY |
| Outline Drawing | XH2D1SS1-1648 | Connection Drawing | EE7308AA-LN |

XH2D1SS1



NOTES:

1. NAMEPLATES TO BE READ FROM CONDUIT BOX SIDE OF MOTOR.

| DASH | FRAME | C | B | 2F | 2FF | 2FFF | BS |
|------|-------|-------|-------|-------|-------|-------|-------|
| 1548 | 364T | 28.40 | 14.61 | 11.25 | | | 11.02 |
| 1648 | 365T | 29.40 | 15.61 | 12.25 | 11.25 | 11.25 | 12.02 |

| | | TOLERANCES UNLESS SPECIFIED | | | | | |
|--|--|-----------------------------|--------|---------------------------|------------|----------------------|--|
| | | DEC. | INCHES | | | | |
| | | .X | ±.1 | | | | |
| 2 | ADDED DASH 1548, REVISED PART NAME; U.E.I. WAS | .XX | ±.03 | TITLE OUTLINE NEMA MOTORS | | DRAWN TJB 08-07-2001 | |
| | U.E. CN34267 | .XXX | ±.005 | 360T FRAME OPD UEI | | CHK DRS 09-04-2001 | |
| 1 | NEW DRAWING MU37565 | .XXXX | ±.0005 | MAT'L | | APPD HNH 09-04-2001 | |
| NO. | REVISION | BY & DATE | CHK | ANG | FINISH | SCALE 1=5 | |
| THIS DRAWING IN DESIGN AND DETAIL IS OUR PROPERTY AND MUST NOT BE USED EXCEPT IN CONNECTION WITH OUR WORK ALL RIGHTS OF DESIGN AND INVENTION ARE RESERVED THIS IS AN ELECTRONICALLY GENERATED DOCUMENT - DO NOT SCALE THIS PRINT | | | | RFP | 09-04-2001 | REF | |
| | | | | DIST | BY | FMF | |
| | | | | CAD FILE xh2d1ss1 | | PREV | |
| | | | | SIZE B | | DRAWING NO. XH2D1SS1 | |
| | | | | | | PAGE 1 OF 1 | |
| | | | | | | REV. 2 | |

T12 _____
 T1 _____
 T6 _____ L1
 T7 _____

T2 _____
 T4 _____ L2
 T8 _____
 T10 _____

T3 _____
 T5 _____ L3
 T9 _____
 T11 _____

LOW VOLTAGE

T12 _____ L1
 T1 _____

T4 _____
 T7 _____

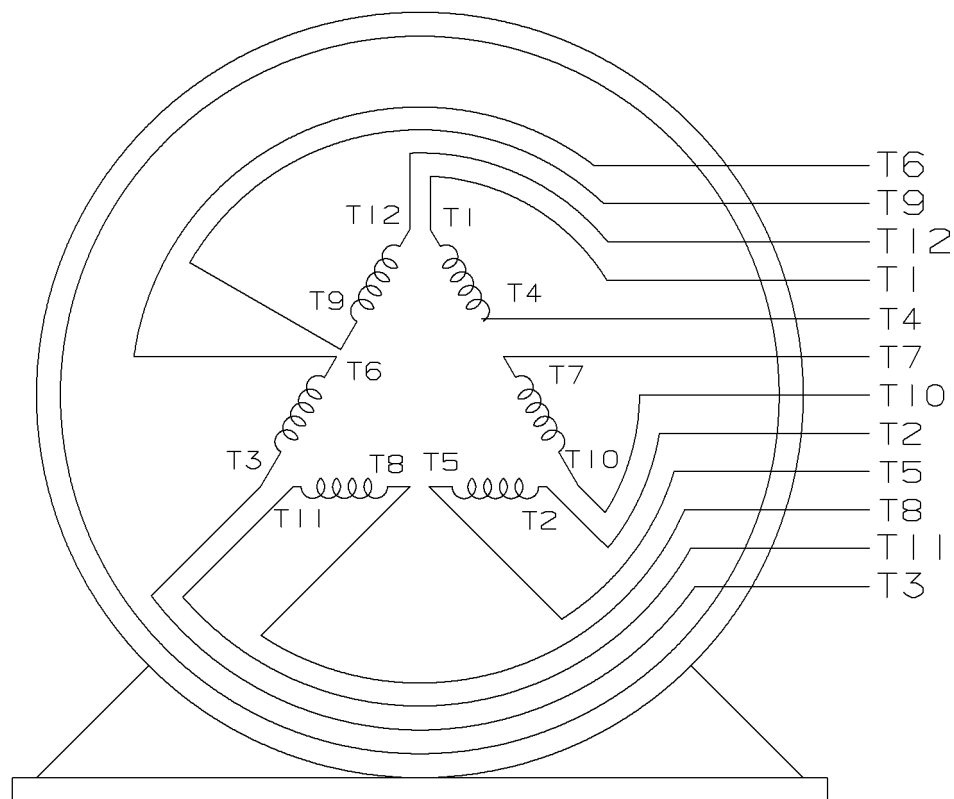
T2 _____ L2
 T10 _____

T5 _____
 T8 _____

T3 _____ L3
 T11 _____

T6 _____
 T9 _____

HIGH VOLTAGE



VIEW OF TERMINAL END

| | | | | | | | | |
|-----|------------|------------------------------------|------|--|---|---------------|--------------|---------------------------|
| | | | |  | ✓ UNLESS OTHERWISE SPECIFIED DIMENSIONS ARE IN INCHES TOL. ON XX±.02 XXX±.005 XXXX±.0005 ANGLES± 7°30" | | | |
| 2 | 08-09-1999 | RE-ISSUE, ADDED '-' TO PART NUMBER | BLR | | MAX. SURFACE ROUGHNESS UNLESS OTHERWISE NOTED | | DRAWN BY TRB | 07-16-1999 |
| 1 | 06-18-1999 | NEW DRAWING | TRB | | FINISH | | CHKD BY ML | 06-18-1999 |
| | | | | | MATERIAL | | APPD BY GK | 06-18-1999 |
| REV | DATE | CHANGE | NAME | PART NAME 3 PHASE CONNECTION DIAGRAM 2/1 DELTA - 12 LEADS | | | | DRWG NO A- EE7308AA-LN |
| | | | | | PURCHASED | CADD FILE NO. | EE7308AALN | |

ERROR: undefined
OFFENDING COMMAND: Pscrip
STACK:



**2100 WASHINGTON ST.
GRAFTON, WI
PH. 262-277-8810**

CERTIFICATION DATA SHEET

CONN. DIAGRAM: EE7308AA-LN

OUTLINE: XH2D1SS1-1648

CATALOG #: LM14815

WINDING #: L3654030 1

MOUNTING: F1 ONLY

TYPICAL MOTOR PERFORMANCE DATA

| HP | kW | SYNC. RPM | F.L. RPM | FRAME | ENCLOSURE | KVA CODE | DESIGN |
|-------|-----------|-----------|-----------|-------|-----------|----------|--------|
| 75&75 | 56.0&56.0 | 1800 | 1782&1475 | 365T | DP | G | BC |

| PH | Hz | VOLTS | AMPS | START TYPE | DUTY | INSL | S.F. | AMB°C |
|----|-------|-----------------|----------------|---------------------|------------|------|-----------|-------|
| 3 | 60/50 | 230/460&380-415 | 176/88&106-100 | WYE START DELTA RUN | CONTINUOUS | F1 | 1.25/1.15 | 40 |

| | | | | | | | | |
|-----------------------|---------|----------------------|----|----------------------|------|-----------------|--|-------------------|
| FULL LOAD EFF: | 95&94.1 | 3/4 LOAD EFF: | 95 | 1/2 LOAD EFF: | 94.5 | GTD. EFF | | ELEC. TYPE |
| FULL LOAD PF: | 84&85 | 3/4 LOAD PF: | 81 | 1/2 LOAD PF: | 73.5 | 94.1 | | SQ CAGE IND RUN |

| F.L. TORQUE | LOCKED ROTOR AMPS | L.R. TORQUE | B.D. TORQUE | F.L. RISE°C |
|-------------|-------------------|-----------------|-----------------|-------------|
| 221 LB-FT | 1084 / 542 | 495 LB-FT 224 % | 500 LB-FT 226 % | 45 |

| SOUND PRESSURE @ 3 FT. | SOUND POWER | ROTOR WK^2 | MAX. WK^2 | SAFE STALL TIME | STARTS / HOUR | APPROX. MOTOR WGT |
|------------------------|-------------|------------|-----------|-----------------|---------------|-------------------|
| 76 dBA | 86 dBA | 0 LB-FT^2 | - LB-FT^2 | - SEC. | - | - LBS. |

***** SUPPLEMENTAL INFORMATION *****

| DE BRACKET TYPE | ODE BRACKET TYPE | MOUNT TYPE | ORIENTATION | SEVERE DUTY | HAZARDOUS LOCATION | DRIP COVER | SCREENS | PAINT |
|-----------------|------------------|------------|-------------|-------------|--------------------|------------|---------|----------------|
| STANDARD | STANDARD | RIGID | HORIZONTAL | FALSE | NONE | FALSE | NONE | GRAY - LINCOLN |

| BEARINGS | | GREASE | SHAFT TYPE | SPECIAL DE | SPECIAL ODE | SHAFT MATERIAL | FRAME MATERIAL |
|----------|------|------------|------------|------------|-------------|-------------------------|----------------|
| DE | ODE | | | | | | |
| BALL | BALL | POLYREX EM | T | NONE | NONE | 1045 HOT ROLLED (C-204) | ROLLED STEEL |
| 6213 | 6311 | | | | | | |

| THERMO-PROTECTORS | | | | THERMISTORS | CONTROL | SPACE HEATERS |
|-------------------|------------|----------|----------|-------------|---------|---------------|
| THERMOSTATS | PROTECTORS | WDG RTDs | BRG RTDs | | | |
| NONE | NOT | NONE | NONE | NONE | FALSE | NONE VOLTS |

*

N

O

T

E

S

*

| | |
|-----------------------------|----------------------|
| INVERTER TORQUE: | NONE |
| INV. HP SPEED RANGE: | NONE |
| ENCODER: | NONE |
| | NONE NONE |
| | NONE NONE PPR |
| BRAKE: | NONE NONE |
| | NONE P/N NONE |
| | NONE NONE |
| | FT-LB NONE V NONE Hz |

Data Sheet

Date: 1/24/2018

LM14815



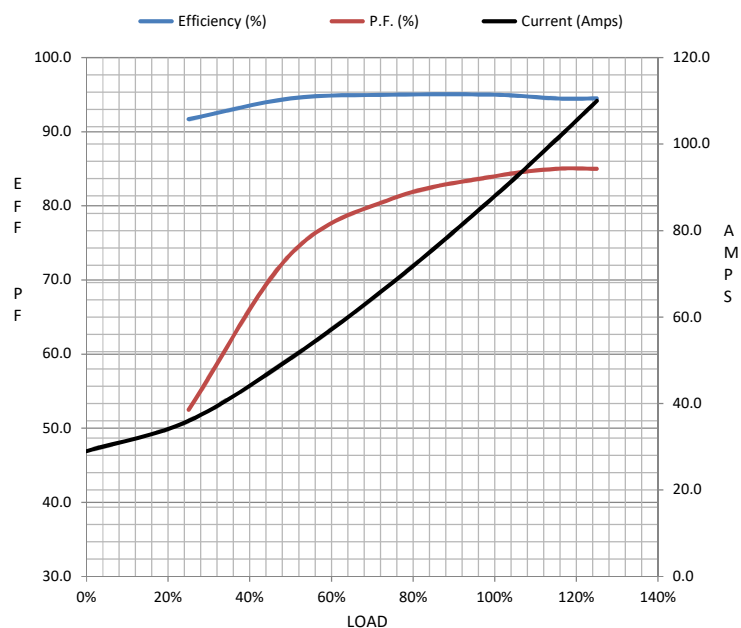
Data @ 460 V

Motor Load Data

| Load | 0% | 25% | 50% | 75% | 100% | 115% | 125% | LR | |
|----------------|------|------|------|------|------|-------|------|------|--|
| Current (Amps) | 29.0 | 36.0 | 50.5 | 68.0 | 88.0 | 101 | 110 | 542 | |
| Torque (ft-lb) | 0.00 | 55.0 | 110 | 165 | 221 | 255 | 277 | 495 | |
| RPM | 1800 | 1795 | 1790 | 1785 | 1782 | 1.778 | 1775 | 0 | |
| Efficiency (%) | | 91.7 | 94.5 | 95.0 | 95.0 | 94.5 | 94.5 | | |
| P.F. (%) | 3.5 | 52.5 | 73.5 | 81.0 | 84.0 | 85.0 | 85.0 | 36.0 | |

Motor Speed Data

| | LR | Pull-Up | BD | Rated | Idle | Information Block | |
|----------------|-----|---------|------|-------|------|-------------------|------|
| Speed (RPM) | 0 | 900 | 1725 | 1782 | 1800 | HP | 75.0 |
| Current (Amps) | 542 | 488 | 292 | 88.0 | 29.0 | Sync. RPM | 1800 |
| Torque (ft-lb) | 495 | 420 | 500 | 221 | 0.00 | Frame | 365 |



| | | | | |
|----------------------------|-----------------|--------|--------|--------|
| Frame | 365 | | | |
| Enclosure | DP | | | |
| Construction | TDR | | | |
| Voltage | 230/460#380-415 | V | | |
| Frequency | 60 | Hz | | |
| Design | B | | | |
| LR Code letter | G | | | |
| Service Factor | 1.15 | | | |
| Temp Rise @ FL | 45 | ° C | | |
| Duty | CONT | | | |
| Ambient | 40 | ° C | | |
| Elevation | 1,000 | feet | | |
| Rotor/Shaft wk² | 0.00 | Lb-Ft² | | |
| Ref Wdg | L3654030 | NONE | | |
| Sound Pressure @ 1M | 76 | dBA | | |
| VFD Rating | NONE | | | |
| Outline Dwg | XH2D1SS1-1648 | | | |
| Conn. Diag | EE7308AA-LN | | | |
| Additional Specifications: | | | | |
| 0 | | | | |
| 0 | | | | |
| EQUIV CKT (OHMS / PHASE) | | | | |
| R1 | R2 | X1 | X2 | Xm |
| 0.0450 | 0.0300 | 0.3210 | 0.4610 | 9.1850 |

Speed - Torque Curve

