

# PRODUCT INFORMATION PACKET



Model No: LM14814

Catalog No: LM14814

General Purpose Motor, 100 & 100 HP, 3 Ph, 60 & 50 Hz, 230/460 & 380-415 V, 3600 & 3000 RPM,  
365TS Frame, DP



Regal and Leeson are trademarks of Regal Rexnord Corporation or one of its affiliated companies.

©2023 Regal Rexnord Corporation, All Rights Reserved. MC017097E



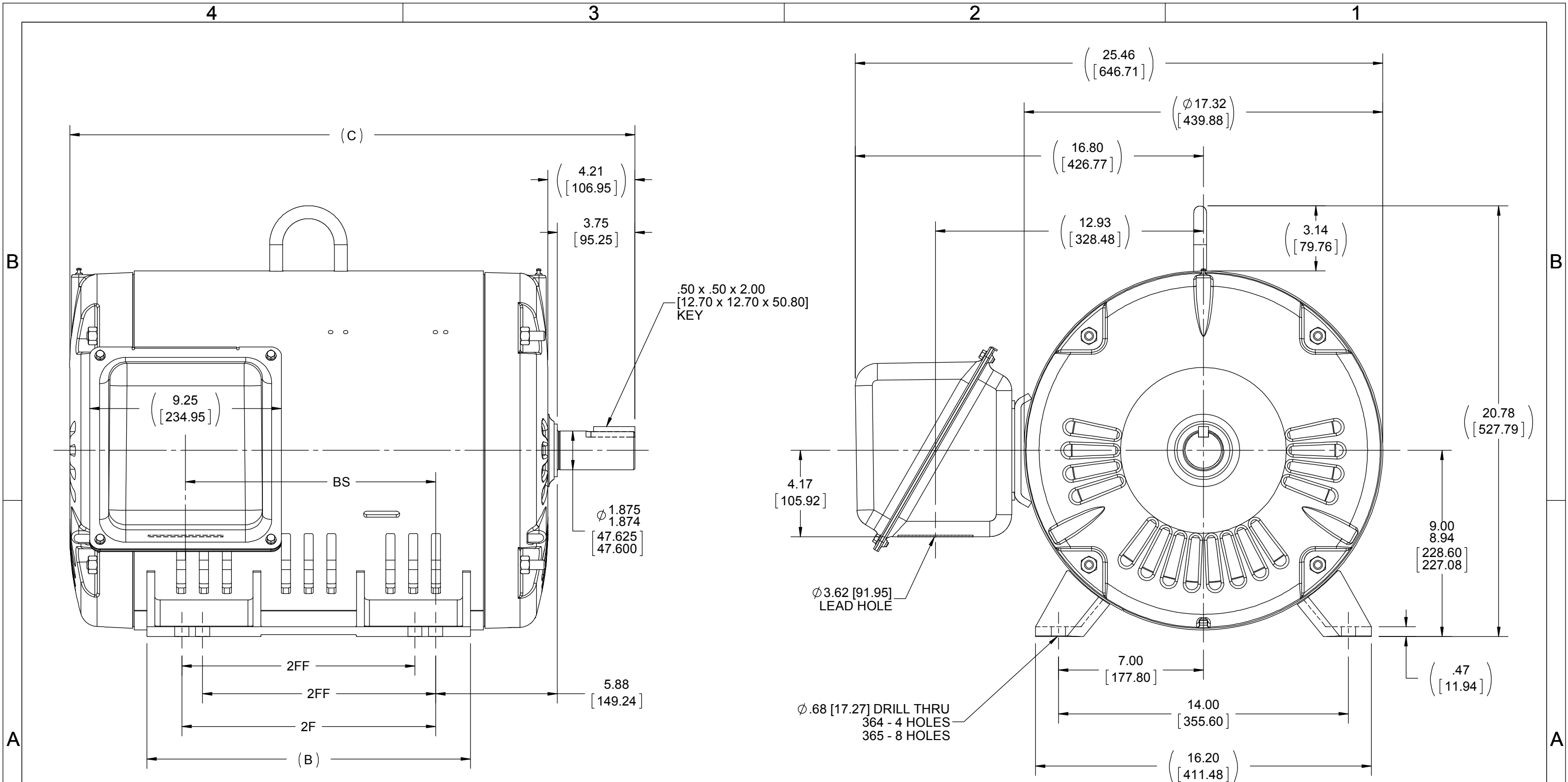


## Nameplate Specifications

Phase	3	Output HP	100 & 100 Hp
Output KW	75.0 & 75.0 kW	Voltage	230/460 & 380-415 V
Speed	3575 & 2970 rpm	Service Factor	1.25 & 1.15
Frame	365TS	Enclosure	Drip Proof
Thermal Protection	No Protection	Efficiency	95.4 & 94.5 %
Ambient Temperature	40 °C	Frequency	60 & 50 Hz
Current	218/109 & 132-123 A	Power Factor	90
Duty	Continuous	Insulation Class	F
Design Code	B	KVA Code	G
Drive End Bearing Size	313	Opp Drive End Bearing Size	311
UL	Recognized	CSA	Y
CE	Y	IP Code	22
Number of Speeds	1		


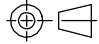
## Technical Specifications

Electrical Type	Squirrel Cage Induction Run	Starting Method	Wye Start Delta Run
Poles	2	Rotation	Reversible
Resistance Main	.044 Ohms	Mounting	Rigid Base
Motor Orientation	Horizontal	Drive End Bearing	Ball
Opp Drive End Bearing	Ball	Frame Material	Rolled Steel
Shaft Type	TS	Overall Length	27.27 in
Frame Length	16.48 in	Shaft Diameter	1.875 in
Shaft Extension	3.75 in	Assembly/Box Mounting	F1 ONLY
Outline Drawing	XH2D1SS2-1648	Connection Drawing	A-EE7308AA-LN



NOTES:  
1. NAMEPLATES TO BE READ FROM CONDUIT BOX  
SIDE OF MOTOR.

DASH	FRAME	B	C	2F	2FF	BS
1548	364TS	14.61 [371.09]	26.28 [667.51]	11.25 [285.75]		11.07 [281.18]
1648	365TS	15.61 [396.49]	27.28 [692.94]	12.25 [311.15]	11.25 [285.75]	12.07 [306.58]

DRAWING REVISION C	REVISION BY T. WOLLER	DATE 2/26/2019	TOLERANCES UNLESS OTHERWISE SPECIFIED: DEC. INCH mm ANGLE .X $\pm$ 0.1 [ $\pm$ 2.5] .XX $\pm$ 0.03 [ $\pm$ 0.76] .XXX $\pm$ 0.005 [ $\pm$ 0.127] .XXXX $\pm$ 0.0005 [ $\pm$ 0.0127] REMOVE BURRS & BREAK SHARP EDGES: .003/.015 [ .076/.381 ] X 45 ° CORNER FILLETS: R.02 [ .51 ] MACHINED SURFACES: 200 INCH mm 5.1 mm SHOWN IN [BRACKETS]			DRAWN BY NJS	 Regal Beloit America, Inc.		
ECO ECO-0163030	APPROVED BY C. OHRMUNDT	DATE 3/14/2019				DATE 09-17-2001			
ECO DESCRIPTION SWITCHED FRAME TO CORRECT DESIGN			COPYRIGHT REGAL BELOIT AMERICA, INC. ALL RIGHTS RESERVED. PROPRIETARY AND CONFIDENTIAL INFORMATION - THIS DOCUMENT IS THE PROPERTY OF REGAL BELOIT AMERICA, INC. ("OWNER") AND CONTAINS OWNER'S PROPRIETARY INFORMATION. ANY PERSON, CORPORATION OR OTHER FIRM RECEIVING IT IS DEEMED, BY RECEIVING IT, TO AGREE THAT IT, AND/OR ANY PART OF IT, SHALL NOT BE DISCLOSED TO ANY PERSON, CORPORATION OR OTHER ENTITY, DUPLICATED, AND/OR USED, EXCEPT AS EXPRESSLY APPROVED IN WRITING IN ADVANCE BY OWNER. THIS DOCUMENT SHALL BE RETURNED TO OWNER UPON REQUEST. IT MAY BE SUBJECT TO CERTAIN RESTRICTIONS UNDER APPLICABLE EXPORT CONTROL LAWS AND REGULATIONS.			APPROVED BY HNH	DESCRIPTION OUTLINE 360TS FR. ODP UE		
						DATE 09-18-2001			
						REFERENCE	MATERIAL		PROCESS/FINISH
						THIRD ANGLE PROJECTION 	SIZE B	DRAWING NUMBER XH2D1SS2	SHEET 1 OF 1

T12 \_\_\_\_\_  
 T1 \_\_\_\_\_  
 T6 \_\_\_\_\_ L1  
 T7 \_\_\_\_\_

T2 \_\_\_\_\_  
 T4 \_\_\_\_\_  
 T8 \_\_\_\_\_ L2  
 T10 \_\_\_\_\_

T3 \_\_\_\_\_  
 T5 \_\_\_\_\_  
 T9 \_\_\_\_\_ L3  
 T11 \_\_\_\_\_

LOW VOLTAGE

T12 \_\_\_\_\_ L1  
 T1 \_\_\_\_\_

T4 \_\_\_\_\_  
 T7 \_\_\_\_\_

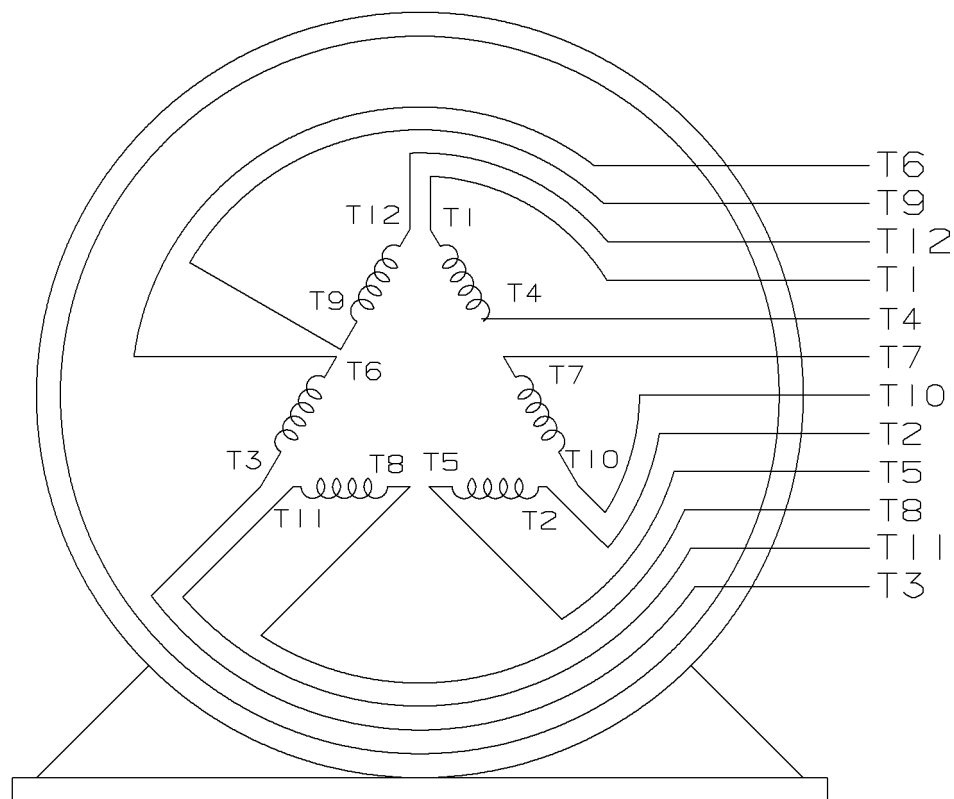
T2 \_\_\_\_\_ L2  
 T10 \_\_\_\_\_

T5 \_\_\_\_\_  
 T8 \_\_\_\_\_

T3 \_\_\_\_\_ L3  
 T11 \_\_\_\_\_

T6 \_\_\_\_\_  
 T9 \_\_\_\_\_

HIGH VOLTAGE



VIEW OF TERMINAL END

					✓ UNLESS OTHERWISE SPECIFIED DIMENSIONS ARE IN INCHES TOL. ON XX±.02 XXX±.005 XXXX±.0005 ANGLES± 7°30"		
2	08-09-1999	RE-ISSUE, ADDED '-' TO PART NUMBER	BLR		MAX. SURFACE ROUGHNESS UNLESS OTHERWISE NOTED		DRAWN BY TRB 07-16-1999
1	06-18-1999	NEW DRAWING	TRB		FINISH		CHKD BY ML 06-18-1999
					MATERIAL		APPD BY GK 06-18-1999
REV	DATE	CHANGE	NAME	PART NAME 3 PHASE CONNECTION DIAGRAM 2/1 DELTA - 12 LEADS			DRWG NO A- EE7308AA-LN
					PURCHASED	CADD FILE NO.	EE7308AALN

ERROR: undefined  
OFFENDING COMMAND: Pscrip  
STACK:



**2100 WASHINGTON ST.  
GRAFTON, WI  
PH. 262-277-8810**

**CONN. DIAGRAM:** A-EE7308AA-LN

**OUTLINE:** XH2D1SS2-1648

**CATALOG #:** LM14814

**WINDING #:** L3652013 1

**MOUNTING:** F1 ONLY

**TYPICAL MOTOR PERFORMANCE DATA**

HP	kW	SYNC. RPM	F.L. RPM	FRAME	ENCLOSURE	KVA CODE	DESIGN
100&100	75.0&75.0	3600	3575&2970	365TS	DP	G	B

PH	Hz	VOLTS	AMPS	START TYPE	DUTY	INSL	S.F.	AMB°C
3	60/50	230/460&380-415	218/109&132-123	WYE START DELTA RUN	CONTINUOUS	F4	1.25/1.15	40

<b>FULL LOAD EFF:</b>	95.4&94.5	<b>3/4 LOAD EFF:</b>	95.4	<b>1/2 LOAD EFF:</b>	95	<b>GTD. EFF</b>		<b>ELEC. TYPE</b>
<b>FULL LOAD PF:</b>	90&90.5	<b>3/4 LOAD PF:</b>	88	<b>1/2 LOAD PF:</b>	82.5	94.5		SQ CAGE IND RUN

F.L. TORQUE	LOCKED ROTOR AMPS	L.R. TORQUE	B.D. TORQUE	F.L. RISE°C
147 LB-FT	1700 / 850	270 LB-FT 184 %	440 LB-FT 299 %	45

SOUND PRESSURE @ 3 FT.	SOUND POWER	ROTOR WK^2	MAX. WK^2	SAFE STALL TIME	STARTS / HOUR	APPROX. MOTOR WGT
82 dBA	92 dBA	- LB-FT^2	- LB-FT^2	- SEC.	-	- LBS.

**\*\*\* SUPPLEMENTAL INFORMATION \*\*\***

DE BRACKET TYPE	ODE BRACKET TYPE	MOUNT TYPE	ORIENTATION	SEVERE DUTY	HAZARDOUS LOCATION	DRIP COVER	SCREENS	PAINT
STANDARD	STANDARD	RIGID	HORIZONTAL	FALSE	NONE	FALSE	NONE	GRAY - LINCOLN

BEARINGS		GREASE	SHAFT TYPE	SPECIAL DE	SPECIAL ODE	SHAFT MATERIAL	FRAME MATERIAL
DE	ODE						
BALL	BALL	POLYREX EM	TS	NONE	NONE	1045 HOT ROLLED (C-204)	ROLLED STEEL
313	311						

THERMO-PROTECTORS				THERMISTORS	CONTROL	SPACE HEATERS
THERMOSTATS	PROTECTORS	WDG RTDs	BRG RTDs			
NONE	NOT	NONE	NONE	NONE	FALSE	NONE VOLTS

\*  
  
N  
  
O  
  
T  
  
E  
  
S  
  
\*

<b>INVERTER TORQUE:</b>	NONE
<b>INV. HP SPEED RANGE:</b>	NONE
<b>ENCODER:</b>	NONE
	NONE NONE
	NONE NONE PPR
<b>BRAKE:</b>	NONE NONE
	NONE P/N NONE
	NONE NONE
	NONE FT-LB NONE V NONE Hz

## Data Sheet

Date: 1/19/2018

LM14814



Data @ 460 V

## Motor Load Data

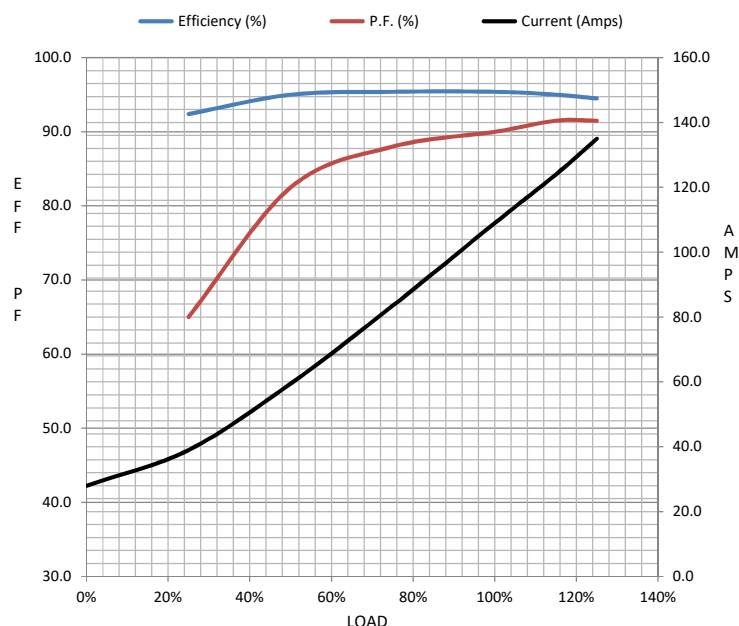
Load	0%	25%	50%	75%	100%	115%	125%	LR	
Current (Amps)	28.0	39.0	59.5	83.5	109	124	135	850	
Torque (ft-lb)	0.00	36.5	73.0	110	147	169	184	270	
RPM	3600	3595	3588	3582	3575	3,570	3568	0	
Efficiency (%)		92.4	95.0	95.4	95.4	95.0	94.5		
P.F. (%)	5.5	65.0	82.5	88.0	90.0	91.5	91.5	31.0	

## Motor Speed Data

	LR	Pull-Up	BD	Rated	Idle
Speed (RPM)	0	1800	3425	3575	3600
Current (Amps)	850	750	550	109	28.0
Torque (ft-lb)	270	240	440	147	0.00

## Information Block

HP	100.0			
Sync. RPM	3600			
Frame	365			
Enclosure	DP			
Construction	TDR			
Voltage	230/460#380-415 V			
Frequency	60 Hz			
Design	A			
LR Code letter	H			
Service Factor	1.15			
Temp Rise @ FL	45 °C			
Duty	CONT			
Ambient	40 °C			
Elevation	1,000 feet			
Rotor/Shaft wk²	0.00 Lb-Ft²			
Ref Wdg	L3652013 NONE			
Sound Pressure @ 1M	82 dBA			
VFD Rating	NONE			
Outline Dwg	XH2D1SS2-1648			
Conn. Diag	A-EE7308AA-LN			
Additional Specifications:				
0				
0				
EQUIV CKT (OHMS / PHASE)				
R1	R2	X1	X2	Xm
0.0310	0.0170	0.2300	0.2130	10.8200



## Speed - Torque Curve

