

PRODUCT INFORMATION PACKET



Model No: LM14812

Catalog No: LM14812

General Purpose Motor, 75 & 75 HP, 3 Ph, 60 & 50 Hz, 230/460 & 380-415 V, 3600 & 3000 RPM,
364TS Frame, DP



Regal and Leeson are trademarks of Regal Rexnord Corporation or one of its affiliated companies.

©2023 Regal Rexnord Corporation, All Rights Reserved. MC017097E



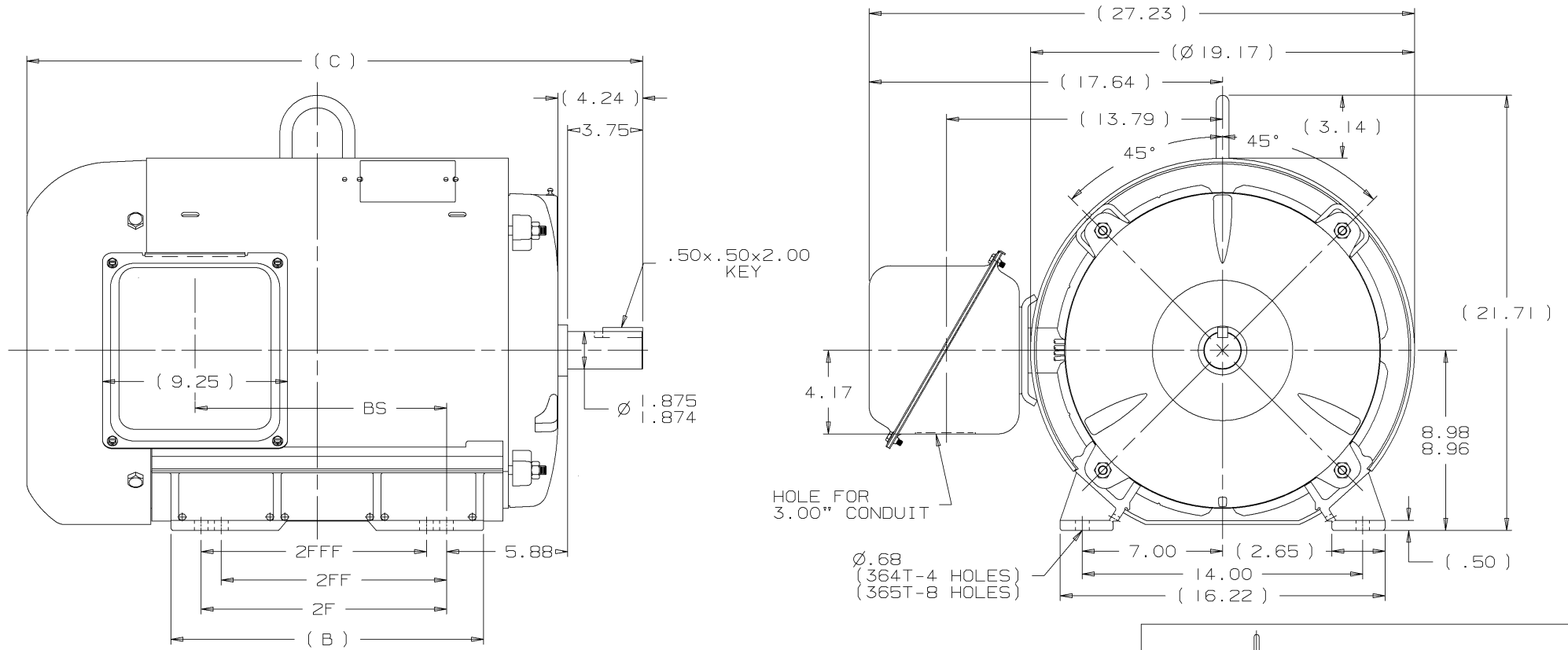


Nameplate Specifications

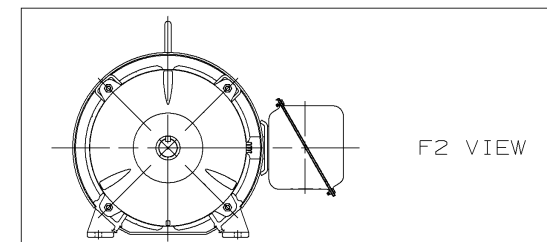
Phase	3	Output HP	75 & 75 Hp
Output KW	56.0 & 56.0 kW	Voltage	230/460 & 380-415 V
Speed	3560 & 2965 rpm	Service Factor	1.25 & 1.15
Frame	364TS	Enclosure	Drip Proof
Thermal Protection	No Protection	Efficiency	95 & 93.6 %
Ambient Temperature	40 °C	Frequency	60 & 50 Hz
Current	164/82 & 98-92 A	Power Factor	91.5
Duty	Continuous	Insulation Class	F
Design Code	B	KVA Code	G
Drive End Bearing Size	313	Opp Drive End Bearing Size	311
UL	Recognized	CSA	Y
CE	Y	IP Code	22
Number of Speeds	1		

Technical Specifications

Electrical Type	Squirrel Cage Induction Run	Starting Method	Wye Start Delta Run
Poles	2	Rotation	Reversible
Resistance Main	.0655 Ohms	Mounting	Rigid Base
Motor Orientation	Horizontal	Drive End Bearing	Ball
Opp Drive End Bearing	Ball	Frame Material	Rolled Steel
Shaft Type	TS	Overall Length	29.77 in
Frame Length	16.70 in	Shaft Diameter	1.875 in
Shaft Extension	3.75 in	Assembly/Box Mounting	F1 ONLY
Connection Drawing	A-EE7308AA-LN	Outline Drawing	XH2F1SS2-1670



- NOTES:
1. CONDUIT BOX CAN BE ROTATED IN 90° STEPS.
 2. NAMEPLATES TO BE READ FROM CONDUIT BOX SIDE OF MOTOR.



DASH	FRAME	C	B	2F	2FF	2FFF	BS	REV	DATE	CHANGE	NAME	PART NAME	OUTLINE	NEMA MOTORS	DRWG NO
1670	364TS	29.77	14.61	11.25			11.55	I	10-31-2002	NEW DRAWING	MU44106	CTO	360TS TEFC UE1		XH2F1SS2
1770	365TS	30.77	15.61	12.25	11.25	11.25	12.55								

UNLESS OTHERWISE SPECIFIED DIMENSIONS ARE IN INCHES
TOL. ON XX±.02 XXX±.005 XXXX±.0005 ANGLES± 7'30"

MAX. SURFACE ROUGHNESS
UNLESS OTHERWISE NOTED

FINISH

MATERIAL

DRAWN BY CTO 10-31-2002

CHKD BY ML 10-31-2002

APPD BY HNH 10-31-2002

PART NAME OUTLINE NEMA MOTORS

360TS TEFC UE1

DRWG NO XH2F1SS2

DISTRIBUTION ~~XX~~ - ~~XX~~ - ~~XX~~ - BY CADD FILE NO. XH2F1SS2

T12 _____
 T1 _____
 T6 _____ L1
 T7 _____

T2 _____
 T4 _____
 T8 _____ L2
 T10 _____

T3 _____
 T5 _____
 T9 _____ L3
 T11 _____

LOW VOLTAGE

T12 _____ L1
 T1 _____

T4 _____
 T7 _____

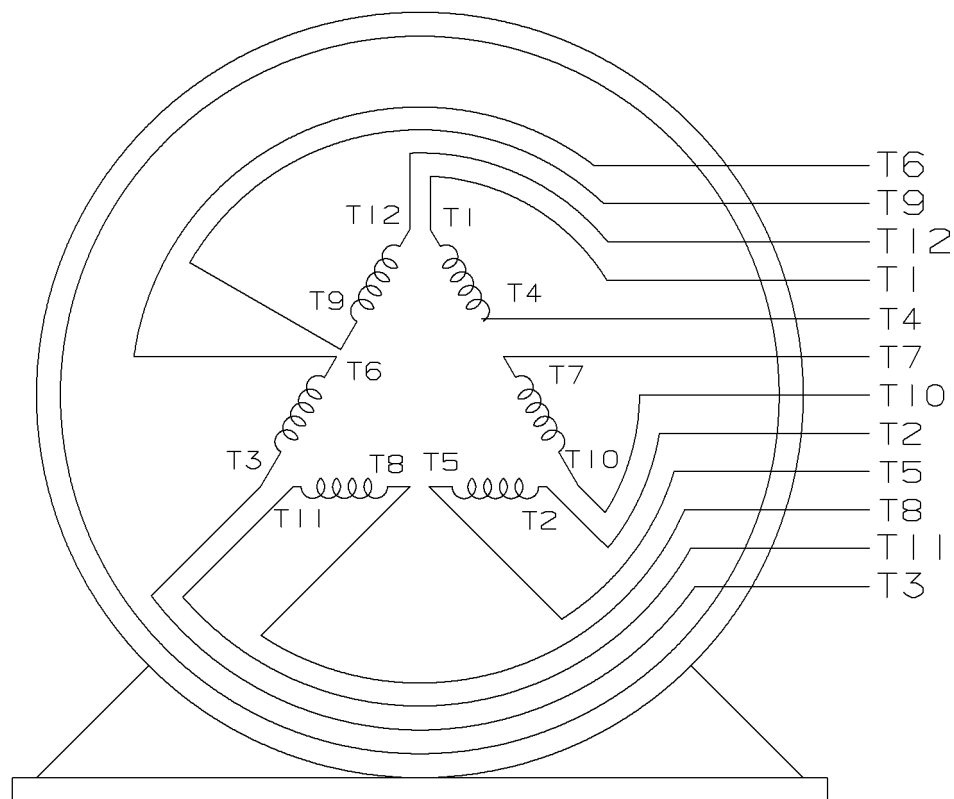
T2 _____ L2
 T10 _____

T5 _____
 T8 _____

T3 _____ L3
 T11 _____

T6 _____
 T9 _____

HIGH VOLTAGE



VIEW OF TERMINAL END

					✓ UNLESS OTHERWISE SPECIFIED DIMENSIONS ARE IN INCHES TOL. ON XX±.02 XXX±.005 XXXX±.0005 ANGLES± 7°30"		
2	08-09-1999	RE-ISSUE, ADDED '-' TO PART NUMBER	BLR		MAX. SURFACE ROUGHNESS UNLESS OTHERWISE NOTED		DRAWN BY TRB 07-16-1999
					FINISH		CHKD BY ML 06-18-1999
1	06-18-1999	NEW DRAWING	TRB		MATERIAL		APPD BY GK 06-18-1999
REV	DATE	CHANGE	NAME	PART NAME 3 PHASE CONNECTION DIAGRAM 2/1 DELTA - 12 LEADS			DRWG NO A- EE7308AA-LN
				PURCHASED	CADD FILE NO.	EE7308AALN	

ERROR: undefined
OFFENDING COMMAND: Pscrip
STACK:



**2100 WASHINGTON ST.
GRAFTON, WI
PH. 262-277-8810**

CERTIFICATION DATA SHEET

CONN. DIAGRAM: A-EE7308AA-LN

OUTLINE: XH2F1SS2-1670

CATALOG #: LM14812

WINDING #: L3642001 7

MOUNTING: F1 ONLY

TYPICAL MOTOR PERFORMANCE DATA

HP	kW	SYNC. RPM	F.L. RPM	FRAME	ENCLOSURE	KVA CODE	DESIGN
75&75	56.0&56.0	3600	3560&2965	364TS	DP	G	B

PH	Hz	VOLTS	AMPS	START TYPE	DUTY	INSL	S.F.	AMB°C
3	60/50	230/460&380-415	164/82&98-92	WYE START DELTA RUN	CONTINUOUS	F4	1.25/1.15	40

FULL LOAD EFF:	95&93.6	3/4 LOAD EFF:	95	1/2 LOAD EFF:	95	GTD. EFF		ELEC. TYPE
FULL LOAD PF:	91.5&91	3/4 LOAD PF:	91	1/2 LOAD PF:	87.5	94.1		SQ CAGE IND RUN

F.L. TORQUE	LOCKED ROTOR AMPS	L.R. TORQUE	B.D. TORQUE	F.L. RISE°C
110 LB-FT	1084 / 542	190 LB-FT 173 %	275 LB-FT 250 %	30

SOUND PRESSURE @ 3 FT.	SOUND POWER	ROTOR WK^2	MAX. WK^2	SAFE STALL TIME	STARTS / HOUR	APPROX. MOTOR WGT
82 dBA	92 dBA	8 LB-FT^2	- LB-FT^2	20 SEC.	-	- LBS.

***** SUPPLEMENTAL INFORMATION *****

DE BRACKET TYPE	ODE BRACKET TYPE	MOUNT TYPE	ORIENTATION	SEVERE DUTY	HAZARDOUS LOCATION	DRIP COVER	SCREENS	PAINT
STANDARD	STANDARD	RIGID	HORIZONTAL	FALSE	NONE	FALSE	NONE	GRAY - LINCOLN

BEARINGS		GREASE	SHAFT TYPE	SPECIAL DE	SPECIAL ODE	SHAFT MATERIAL	FRAME MATERIAL
DE	ODE						
BALL	BALL						
313	311	POLYREX EM	TS	NONE	NONE	1045 HOT ROLLED (C-204)	ROLLED STEEL

THERMO-PROTECTORS				THERMISTORS	CONTROL	SPACE HEATERS
THERMOSTATS	PROTECTORS	WDG RTDs	BRG RTDs			
NONE	NOT	NONE	NONE	NONE	FALSE	NONE VOLTS

*

N

O

T

E

S

*

INVERTER TORQUE:	NONE
INV. HP SPEED RANGE:	NONE
ENCODER:	NONE
	NONE NONE
	NONE NONE PPR
BRAKE:	NONE NONE
	NONE P/N NONE
	NONE NONE
	NONE FT-LB NONE V NONE Hz

Data Sheet

Date: 1/24/2018

LM14812



Data @ 460 V

Motor Load Data

Load	0%	25%	50%	75%	100%	115%	125%	LR	
Current (Amps)	15.5	25.5	42.0	61.0	82.0	93.0	102	542	
Torque (ft-lb)	0.00	27.5	55.0	82.5	110	127	138	190	
RPM	3600	3595	3580	3570	3560	3,555	3550	0	
Efficiency (%)		92.4	95.0	95.0	95.0	95.0	94.1		
P.F. (%)	7.5	74.5	87.5	91.0	91.5	91.5	91.0	30.0	

Motor Speed Data

	LR	Pull-Up	BD	Rated	Idle																																									
Speed (RPM)	0	1800	3400	3560	3600	Information Block																																								
Current (Amps)	542	510	365	82.0	15.5	HP		75.0																																						
Torque (ft-lb)	190	170	275	110	0.00	Sync. RPM		3600																																						
<div><div>— Efficiency (%)</div><div>— P.F. (%)</div><div>— Current (Amps)</div><table border="1"><caption>Graph Data Points (Estimated)</caption><thead><tr><th>Load (%)</th><th>Efficiency (%)</th><th>P.F. (%)</th><th>Current (Amps)</th></tr></thead><tbody><tr><td>0</td><td>-</td><td>-</td><td>18.0</td></tr><tr><td>20</td><td>92.0</td><td>75.0</td><td>22.0</td></tr><tr><td>40</td><td>94.0</td><td>85.0</td><td>35.0</td></tr><tr><td>60</td><td>95.0</td><td>90.0</td><td>50.0</td></tr><tr><td>80</td><td>95.0</td><td>91.0</td><td>68.0</td></tr><tr><td>100</td><td>95.0</td><td>92.0</td><td>82.0</td></tr><tr><td>120</td><td>94.0</td><td>91.0</td><td>90.0</td></tr><tr><td>125</td><td>-</td><td>-</td><td>95.0</td></tr></tbody></table></div>						Load (%)	Efficiency (%)	P.F. (%)	Current (Amps)	0	-	-	18.0	20	92.0	75.0	22.0	40	94.0	85.0	35.0	60	95.0	90.0	50.0	80	95.0	91.0	68.0	100	95.0	92.0	82.0	120	94.0	91.0	90.0	125	-	-	95.0	Frame		364		
						Load (%)	Efficiency (%)	P.F. (%)	Current (Amps)																																					
						0	-	-	18.0																																					
						20	92.0	75.0	22.0																																					
						40	94.0	85.0	35.0																																					
						60	95.0	90.0	50.0																																					
						80	95.0	91.0	68.0																																					
						100	95.0	92.0	82.0																																					
						120	94.0	91.0	90.0																																					
						125	-	-	95.0																																					
						Enclosure		DP																																						
						Construction		TDR																																						
						Voltage		230/460#380-415		V																																				
						Frequency		60		Hz																																				
						Design		A																																						
						LR Code letter		G																																						
						Service Factor		1.15																																						
Temp Rise @ FL		30		° C																																										
Duty		CONT																																												
Ambient		40		° C																																										
Elevation		1,000		feet																																										
Rotor/Shaft wk²		8.0		Lb-Ft²																																										
Ref Wdg		L3642001	NONE																																											
Sound Pressure @ 1M		82		dBA																																										
VFD Rating		NONE																																												
Outline Dwg		XH2F1SS2-1670																																												
Conn. Diag		A-EE7308AA-LN																																												
Additional Specifications:																																														
0																																														
0																																														
EQUIV CKT (OHMS / PHASE)																																														
R1		R2		X1		X2		Xm																																						
0.0410		0.0260		0.3550		0.3140		16.8210																																						

Speed - Torque Curve

