

# PRODUCT INFORMATION PACKET



Model No: LM14811

Catalog No: LM14811

General Purpose Motor, 75 & 60 HP, 3 Ph, 60 & 50 Hz, 230/460 & 190-208/380-415 V, 1800 & 1500 RPM,  
365T Frame, TEFC



Regal and Leeson are trademarks of Regal Rexnord Corporation or one of its affiliated companies.

©2023 Regal Rexnord Corporation, All Rights Reserved. MC017097E



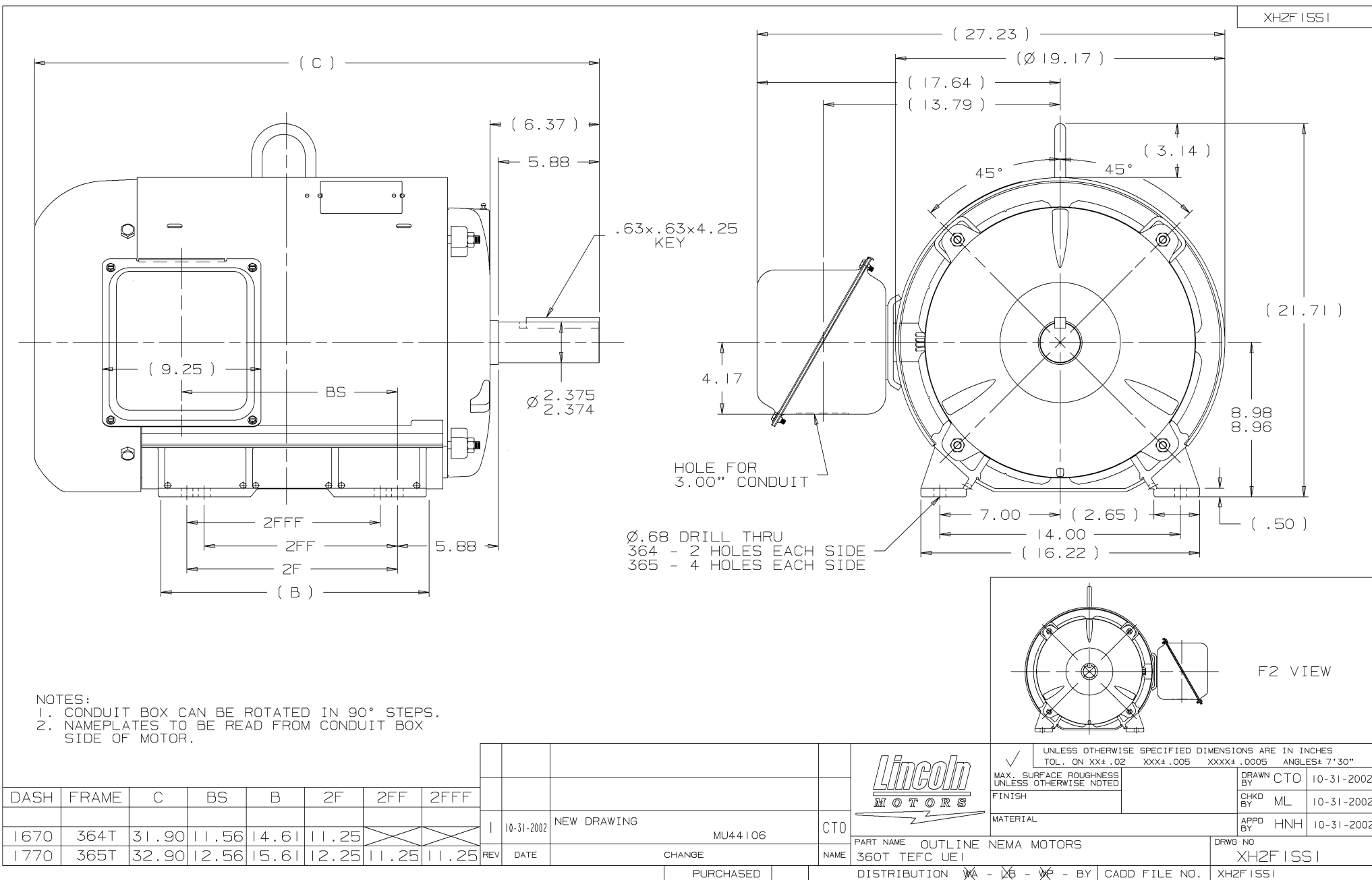


## Nameplate Specifications

Phase	3	Output HP	75 & 60 Hp
Output KW	56.0 & 45.0 kW	Voltage	230/460 & 190-208/380-415 V
Speed	1782 & 1482 rpm	Service Factor	1.15 & 1.0
Frame	365T	Enclosure	Totally Enclosed Fan Cooled
Thermal Protection	No Protection	Efficiency	95.4 & 95 %
Ambient Temperature	40 °C	Frequency	60 & 50 Hz
Current	178/89 & 173-164/86.5-82 A	Power Factor	81.5
Duty	Continuous	Insulation Class	F
Design Code	B	KVA Code	G
Drive End Bearing Size	313	Opp Drive End Bearing Size	311
UL	Recognized	CSA	Y
CE	Y	IP Code	43
Number of Speeds	1		

## Technical Specifications

Electrical Type	Squirrel Cage Induction Run	Starting Method	Wye Start Delta Run
Poles	4	Rotation	Reversible
Resistance Main	.055 Ohms	Mounting	Rigid Base
Motor Orientation	Horizontal	Drive End Bearing	Ball
Opp Drive End Bearing	Ball	Frame Material	Rolled Steel
Shaft Type	T	Overall Length	32.90 in
Frame Length	17.70 in	Shaft Diameter	2.375 in
Shaft Extension	5.88 in	Assembly/Box Mounting	F1/F2 CAPABLE
Connection Drawing	A-EE7308AA-LN	Outline Drawing	XH2F1SS1-1770



T12 \_\_\_\_\_  
 T1 \_\_\_\_\_  
 T6 \_\_\_\_\_ L1  
 T7 \_\_\_\_\_

T2 \_\_\_\_\_  
 T4 \_\_\_\_\_  
 T8 \_\_\_\_\_ L2  
 T10 \_\_\_\_\_

T3 \_\_\_\_\_  
 T5 \_\_\_\_\_  
 T9 \_\_\_\_\_ L3  
 T11 \_\_\_\_\_

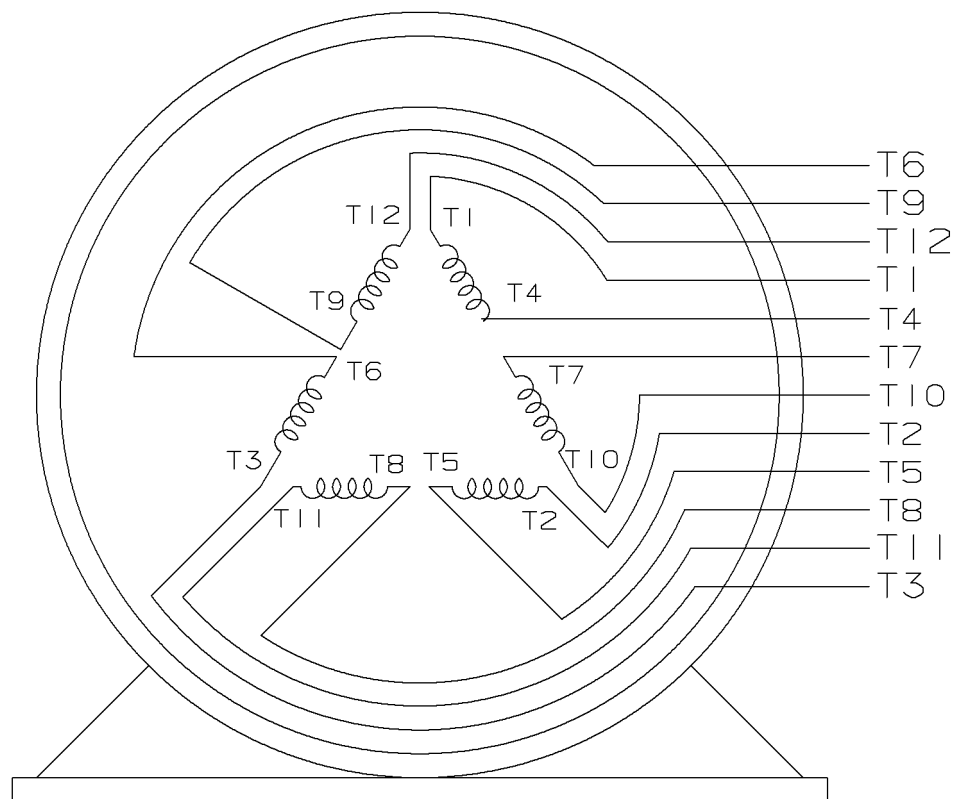
LOW VOLTAGE

T12 \_\_\_\_\_ L1  
 T1 \_\_\_\_\_  
 T4 \_\_\_\_\_  
 T7 \_\_\_\_\_  
 T2 \_\_\_\_\_  
 T10 \_\_\_\_\_ L2

T5 \_\_\_\_\_  
 T8 \_\_\_\_\_  
 T3 \_\_\_\_\_ L3  
 T11 \_\_\_\_\_

T6 \_\_\_\_\_  
 T9 \_\_\_\_\_

HIGH VOLTAGE



VIEW OF TERMINAL END

					✓ UNLESS OTHERWISE SPECIFIED DIMENSIONS ARE IN INCHES TOL. ON XX±.02 XXX±.005 XXXX±.0005 ANGLES± 7°30"		
2	08-09-1999	RE-ISSUE, ADDED '-' TO PART NUMBER	BLR		MAX. SURFACE ROUGHNESS UNLESS OTHERWISE NOTED		DRAWN BY TRB 07-16-1999
1	06-18-1999	NEW DRAWING	TRB		FINISH		CHKD BY ML 06-18-1999
					MATERIAL		APPD BY GK 06-18-1999
REV	DATE	CHANGE	NAME	PART NAME 3 PHASE CONNECTION DIAGRAM 2/1 DELTA - 12 LEADS			DRWG NO A- EE7308AA-LN
					PURCHASED	CADD FILE NO.	EE7308AALN

ERROR: undefined  
OFFENDING COMMAND: Pscrip  
STACK:



**2100 WASHINGTON ST.  
GRAFTON, WI  
PH. 262-277-8810**

**CERTIFICATION DATA SHEET**

**CONN. DIAGRAM:** A-EE7308AA-LN

**OUTLINE:** XH2F1SS1-1770

**CATALOG #:** LM14811

**WINDING #:** L3654028 1

**MOUNTING:** F1/F2 CAPABLE

**TYPICAL MOTOR PERFORMANCE DATA**

HP	kW	SYNC. RPM	F.L. RPM	FRAME	ENCLOSURE	KVA CODE	DESIGN
75&60	56.0&45.0	1800	1782&1482	365T	TEFC	G	B

PH	Hz	VOLTS	AMPS	START TYPE	DUTY	INSL	S.F.	AMB° C
3	60/50	230/460&190-208/380-415	178/89&173-164/86.5-82	WYE START DELTA RUN	CONTINUOUS	F1	1.15/1.0	40

<b>FULL LOAD EFF:</b>	95.4&95	<b>3/4 LOAD EFF:</b>	95.4	<b>1/2 LOAD EFF:</b>	94.5	<b>GTD. EFF</b>		<b>ELEC. TYPE</b>
<b>FULL LOAD PF:</b>	81.5&82	<b>3/4 LOAD PF:</b>	77.5	<b>1/2 LOAD PF:</b>	68	94.5		SQ CAGE IND RUN

F.L. TORQUE	LOCKED ROTOR AMPS	L.R. TORQUE	B.D. TORQUE	F.L. RISE°C
221 LB-FT	1164 / 582	545 LB-FT 246 %	577 LB-FT 261 %	85

SOUND PRESSURE @ 3 FT.	SOUND POWER	ROTOR WK^2	MAX. WK^2	SAFE STALL TIME	STARTS / HOUR	APPROX. MOTOR WGT
- dBA	- dBA	0 LB-FT^2	- LB-FT^2	- SEC.	-	- LBS.

**\*\*\* SUPPLEMENTAL INFORMATION \*\*\***

DE BRACKET TYPE	ODE BRACKET TYPE	MOUNT TYPE	ORIENTATION	SEVERE DUTY	HAZARDOUS LOCATION	DRIP COVER	SCREENS	PAINT
STANDARD	STANDARD	RIGID	HORIZONTAL	FALSE	NONE	FALSE	NONE	GRAY - LINCOLN

BEARINGS		GREASE	SHAFT TYPE	SPECIAL DE	SPECIAL ODE	SHAFT MATERIAL	FRAME MATERIAL
DE	ODE						
BALL	BALL	POLYREX EM	T	NONE	NONE	1045 HOT ROLLED (C-204)	ROLLED STEEL
313	311						

THERMO-PROTECTORS				THERMISTORS	CONTROL	SPACE HEATERS
THERMOSTATS	PROTECTORS	WDG RTDs	BRG RTDs			
NONE	NOT	NONE	NONE	NONE	FALSE	NONE VOLTS

\*  
  
N  
  
O  
  
T  
  
E  
  
S

<b>INVERTER TORQUE:</b>	NONE
<b>INV. HP SPEED RANGE:</b>	NONE
<b>ENCODER:</b>	NONE
	NONE NONE
	NONE NONE PPR
<b>BRAKE:</b>	NONE NONE
	NONE P/N NONE
	NONE NONE
	NONE FT-LB NONE V NONE Hz

## Data Sheet

Date: 1/24/2018

LM14811



Data @ 460 V

## Motor Load Data

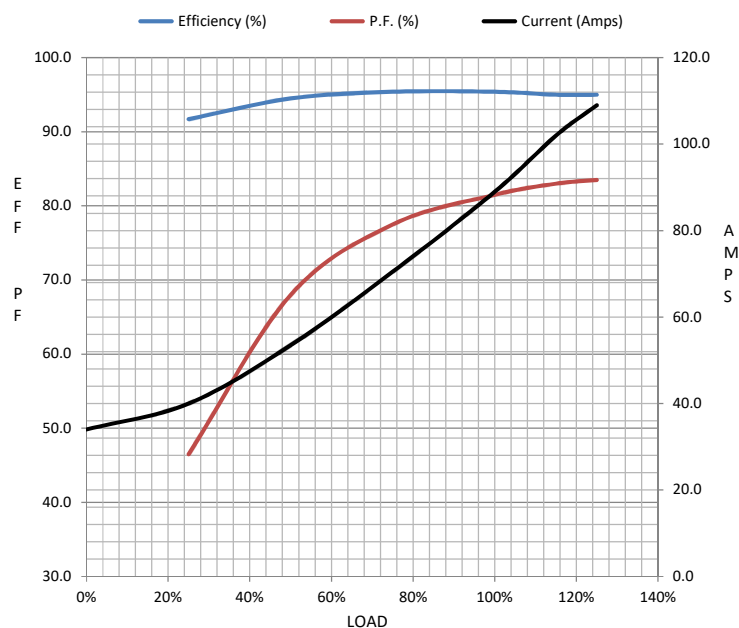
Load	0%	25%	50%	75%	100%	115%	125%	LR	
Current (Amps)	34.0	40.0	53.5	70.5	89.0	102	109	582	
Torque (ft-lb)	0.00	55.0	110	165	221	255	277	545	
RPM	1800	1796	1791	1786	1782	1.778	1776	0	
Efficiency (%)		91.7	94.5	95.4	95.4	95.0	95.0		
P.F. (%)	3.5	46.5	68.0	77.5	81.5	83.0	83.5	35.0	

## Motor Speed Data

	LR	Pull-Up	BD	Rated	Idle
Speed (RPM)	0	900	1690	1782	1800
Current (Amps)	582	475	313	89.0	34.0
Torque (ft-lb)	545	475	577	221	0.00

## Information Block

HP	75.0			
Sync. RPM	1800			
Frame	365			
Enclosure	TEFC			
Construction	TFR			
Voltage	230/460#190-208/380-415 V			
Frequency	60 Hz			
Design	A			
LR Code letter	G			
Service Factor	1.15			
Temp Rise @ FL	85 °C			
Duty	CONT			
Ambient	40 °C			
Elevation	1,000 feet			
Rotor/Shaft wk²	0.00 Lb-Ft²			
Ref Wdg	L3654028 NONE			
Sound Pressure @ 1M	999 dBA			
VFD Rating	NONE			
Outline Dwg	XH2F1SS1-1770			
Conn. Diag	A-EE7308AA-LN			
Additional Specifications:				
0				
0				
EQUIV CKT (OHMS / PHASE)				
R1	R2	X1	X2	Xm
0.0420	0.0300	0.2990	0.3820	7.6360



## Speed - Torque Curve

