

PRODUCT INFORMATION PACKET

Model No: LM14399

Catalog No: LM14399

Obsolete in the US, replaced by LM14411 - 326T TEFC 50HP1800 575000000/360

Regal and are trademarks of Regal Rexnord Corporation or one of its affiliated companies.
©2022 Regal Rexnord Corporation, All Rights Reserved. MC017097E



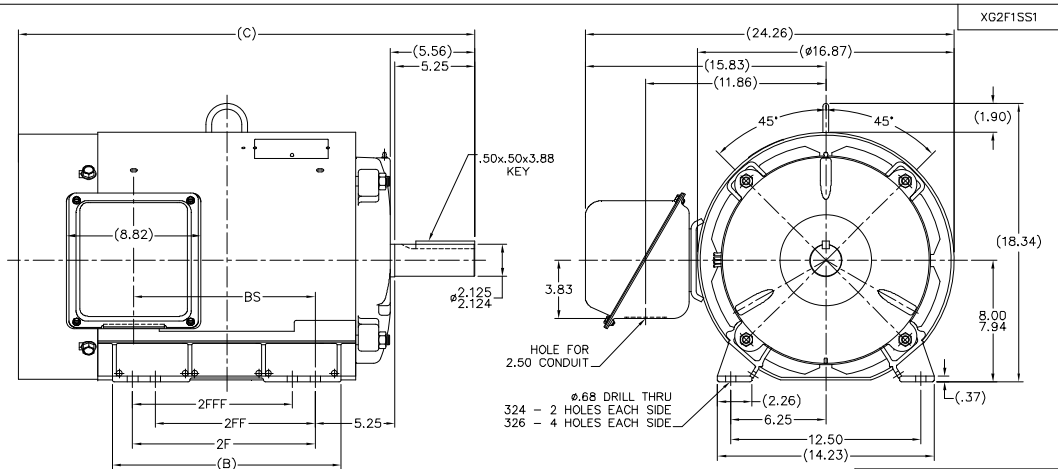
Nameplate Specifications

Output HP	50 Hp	Output KW	37.3 kW
Frequency	60 Hz	Voltage	575 V
Current	51.6 A	Speed	1782 rpm
Service Factor	1.25	Phase	3
Efficiency	93 %	Power Factor	78
Duty	Continuous	Insulation Class	F
Design Code	B	KVA Code	G
Frame	326T	Enclosure	Totally Enclosed Fan Cooled
Thermal Protection	No Protection	Ambient Temperature	40 °C
Drive End Bearing Size	311	Opp Drive End Bearing Size	309
UL	Recognized	CSA	Y
CE	N	IP Code	43
Number of Speeds	1		

Technical Specifications


Electrical Type	Squirrel Cage Induction Run	Starting Method	Wye Start Delta Run
Poles	4	Rotation	Reversible
Resistance Main	.17 Ohms	Mounting	Rigid Base
Motor Orientation	Horizontal	Drive End Bearing	Ball
Opp Drive End Bearing	Ball	Frame Material	Rolled Steel
Shaft Type	T	Assembly/Box Mounting	F1 ONLY
Outline Drawing	XG2F1SS1-1700	Connection Drawing	A-EE7340-LN

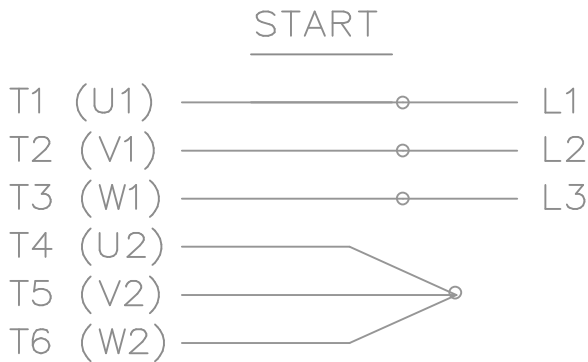
This is an uncontrolled document once printed or downloaded and is subject to change without notice. Date Created:07/18/2022



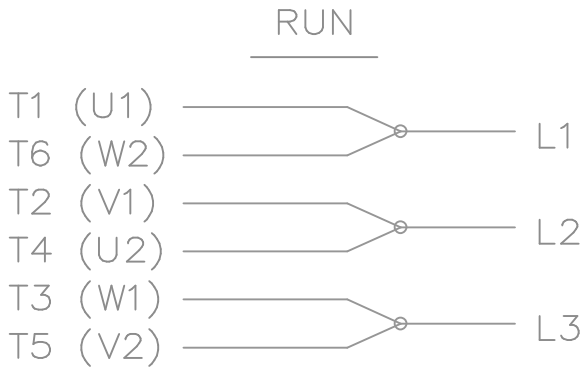
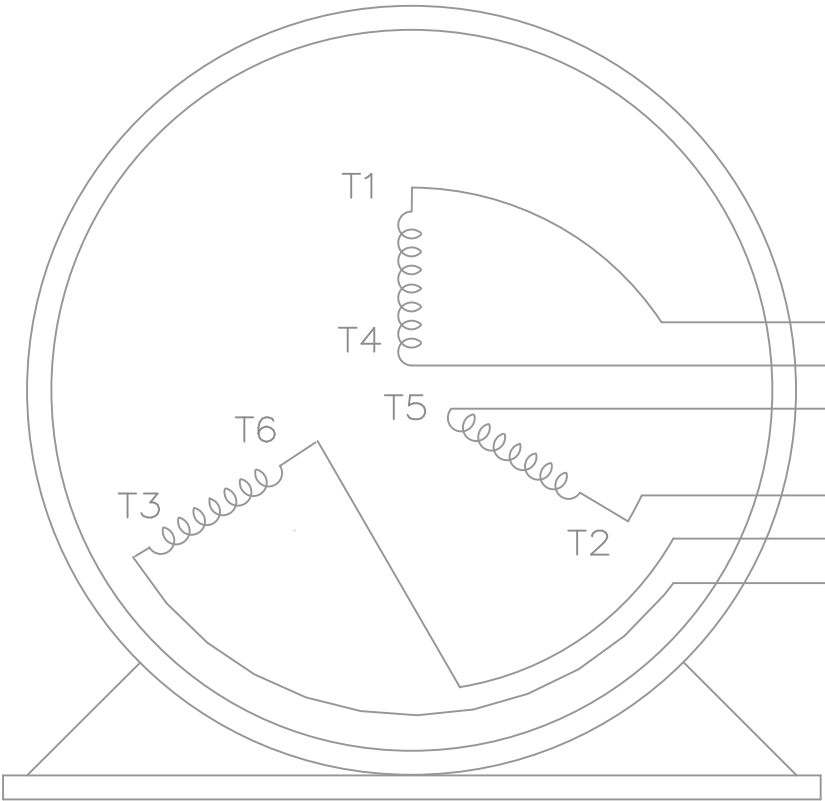
- NOTES:
- CONDUIT BOX CAN BE ROTATED IN 90° STEPS.
 - NAMEPLATES TO BE READ FROM CONDUIT BOX SIDE OF MOTOR.

DASH	FRAME	C	BS	B	2F	2FF	2FFF
1550	324T	28.50	10.62	13.52	10.50		
1700	326T	30.00	12.12	15.02	12.00	10.50	10.50

		TOLERANCES UNLESS SPECIFIED						DRAWING MSG 09-17-2001	
		DEC. INCHES						CHK MA 09-17-2001	
		XX .5:1						APPD HNH 08-17-2001	
C		REPLACED 3C223-G4 WITH 557965-CM ; CR-0001503		SP 04/07/2022		AS		TITLE OUTLINE NEMA MOTORS 320T FR. - TEFC - UE	
T		NEW DRAWING CN34267		MSG 09/24/01		JXXX		SCALE .225=1	
						JXXXX		REF	
						JXXXX		PMF	
						CHK		REV	
NO.		REVISION		BY & DATE		FMSH		SIZE	
		THIS DRAWING IN DESIGN AND DETAIL IS OUR PROPERTY AND MUST NOT BE USED EXCEPT IN CONNECTION WITH OUR WORK. ALL RIGHTS OF DESIGN AND INVENTION ARE RESERVED THERE IS AN ELECTRONICALLY GENERATED DOCUMENT - GO NOT SCALE. DRAW PRINT		REFD 09-24-2001		CAD FILE XG21fss1		DRAWING NO. PAGE OF	
				OBT BY				XG21FSS1	
								REV.	



THREE PHASE — Y START
 Δ RUN MOTOR




T1 (U1)
 T4 (U2)
 T5 (V2)
 T2 (V1)
 T6 (W2)
 T3 (W1)

T6CK
 T6BM
 T4CC
 T2DL
 T4C

NOTE:
 IEC LEAD MARKINGS ARE NOTED
 IN PARENTHESES

VIEW OF TERMINAL END

				TOLERANCES UNLESS SPECIFIED			DRAWN BLR 10-04-1999			
				DEC.	INCHES		CHK DRS 10-04-1999			
				.X	±.1		APPD TB 10-04-1999			
3	REVISED TO MATCH M.E. ORIGINAL	TAT 07-25-2005	ML	.XX	±.02	TITLE CONNECTION DIAGRAM 3ø – WYE START DELTA RUN	SCALE 1=1			
2	REVISED DRAWING MISTAKE CN 29200-2980	ERH 05-15-2003	ML	.XXX	±.005		REF			
1	NEW DRAWING	BLR 10-09-1999		.XXXX	±.0005		FMF			
NO.	REVISION	BY & DATE	CHK	ANG	±7'30"	FINISH	PREV			
THIS DRAWING IN DESIGN AND DETAIL IS OUR PROPERTY AND MUST NOT BE USED EXCEPT IN CONNECTION WITH OUR WORK ALL RIGHTS OF DESIGN AND INVENTION ARE RESERVED THIS IS AN ELECTRONICALLY GENERATED DOCUMENT – DO NOT SCALE THIS PRINT			RFP		CAD FILE ee7340_In		SIZE	DRAWING NO.	PAGE OF	REV.
			DIST WA-LB-SB				A	EE7340-LN		3