

PRODUCT INFORMATION PACKET



Model No: LM13951

Catalog No: LM13951

OBSOLETE - REPLACED BY LM13963 - 30,3600,TEFC,286TS,3/60/230/460

Regal and Leeson are trademarks of Regal Rexnord Corporation or one of its affiliated companies.

©2023 Regal Rexnord Corporation, All Rights Reserved. MC017097E





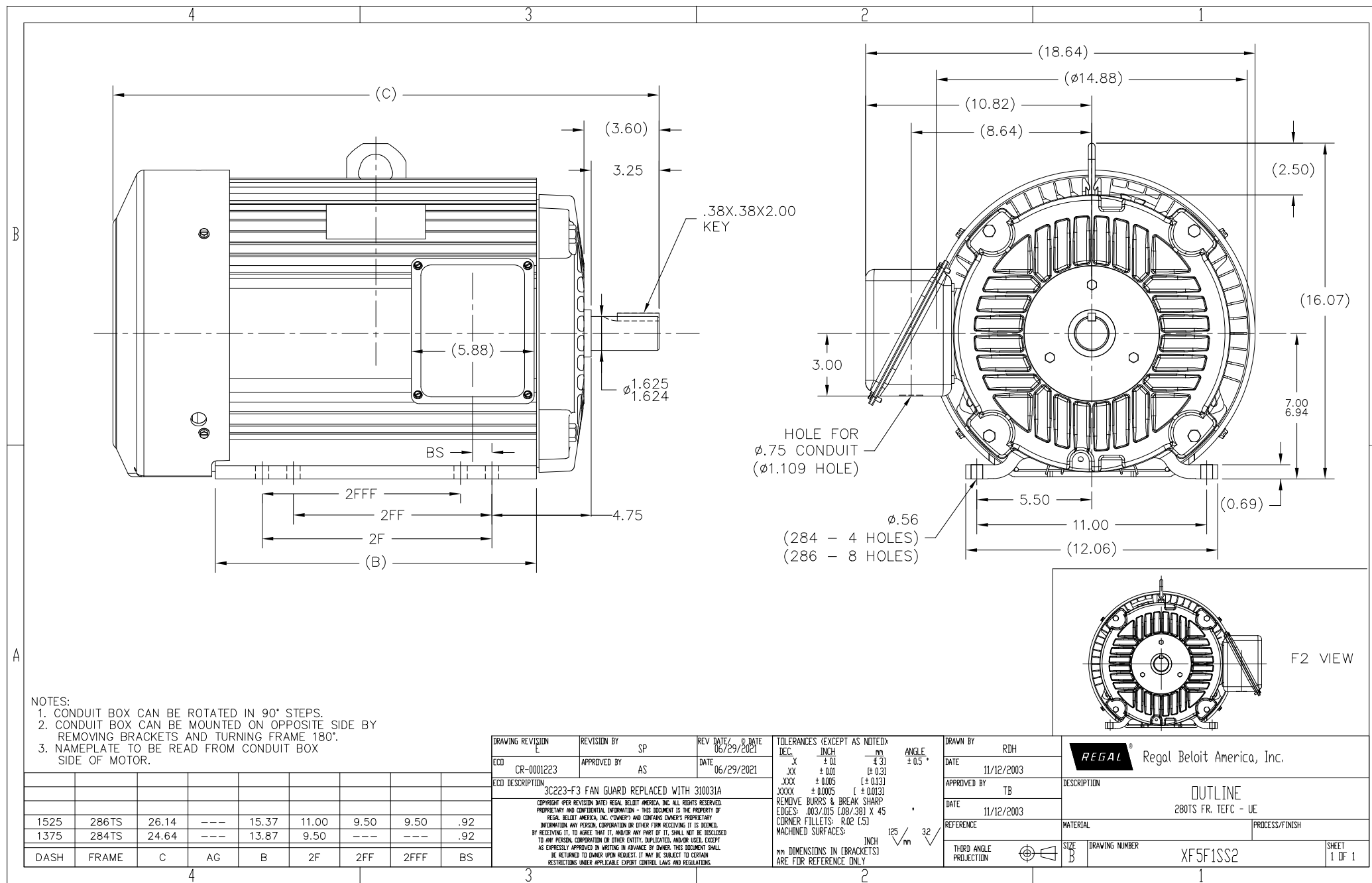
Nameplate Specifications

Phase	3	Output HP	30 & 30 Hp
Output KW	22.4 & 22.4 kW	Voltage	230/460 & 208/415 V
Speed	3530 & 2920 rpm	Service Factor	1.25 & 1.0
Frame	286TS	Enclosure	Totally Enclosed Fan Cooled
Thermal Protection	No Protection	Efficiency	91 & 91.7 %
Ambient Temperature	40 °C	Frequency	60 & 50 Hz
Current	68/34 & 76/38 A	Power Factor	90.5
Duty	Continuous	Insulation Class	F
Design Code	B	KVA Code	G
Drive End Bearing Size	312	Opp Drive End Bearing Size	209
UL	Recognized	CSA	Y
CE	Y	IP Code	43
Number of Speeds	1		

Technical Specifications

Electrical Type	Squirrel Cage Induction Run	Starting Method	Wye Start Delta Run
Poles	2	Rotation	Reversible
Resistance Main	0 Ohms	Mounting	Rigid Base
Motor Orientation	Horizontal	Drive End Bearing	Ball
Opp Drive End Bearing	Ball	Frame Material	Aluminum
Shaft Type	TS	Assembly/Box Mounting	F1/F2 CAPABLE
Outline Drawing	XF5F1SS2-1525	Connection Drawing	3A263-2

This is an uncontrolled document once printed or downloaded and is subject to change without notice. Date Created:06/22/2023



- NOTES:
- 1. CONDUIT BOX CAN BE ROTATED IN 90° STEPS.
 - 2. CONDUIT BOX CAN BE MOUNTED ON OPPOSITE SIDE BY REMOVING BRACKETS AND TURNING FRAME 180°.
 - 3. NAMEPLATE TO BE READ FROM CONDUIT BOX SIDE OF MOTOR.

1525	286TS	26.14	---	15.37	11.00	9.50	9.50	.92
1375	284TS	24.64	---	13.87	9.50	---	---	.92
DASH	FRAME	C	AG	B	2F	2FF	2FFF	BS

DRAWING REVISION E	REVISION BY SP	REV. DATE / © DATE 06/29/2021	TOLERANCES (EXCEPT AS NOTED): DEC. INCH MM .XX ± 0.01 (± 0.3) .XXX ± 0.005 (± 0.13) .XXXX ± 0.0005 (± 0.013) REMOVE BURRS & BREAK SHARP EDGES: .003/.015 (.08/.38) X 45 CORNER FILLETS: R.02 (.5) MACHINED SURFACES: INCH 125 mm 32	DRAWN BY RDH	DATE 11/12/2003	DRAWING NUMBER XF5F1SS2	SHEET 1 OF 1
ECCD CR-0001223	APPROVED BY AS	DATE 06/29/2021	ANGLE ± 0.5°	APPROVED BY TB	DATE 11/12/2003		
ECCD DESCRIPTION 3C223-F3 FAN GUARD REPLACED WITH 310031A COPYRIGHT (PER REVISION DATED) REGAL BELLOIT AMERICA, INC. ALL RIGHTS RESERVED. PROPRIETARY AND CONFIDENTIAL INFORMATION - THIS DOCUMENT IS THE PROPERTY OF REGAL BELLOIT AMERICA, INC. (OWNER) AND CONTAINS OWNER'S PROPRIETARY INFORMATION. ANY PERSON, CORPORATION OR OTHER FOR RECEIVING IT IS ADVISED BY RECEIVING IT, TO AGREE THAT IT, AND/OR ANY PART OF IT, SHALL NOT BE DISCLOSED TO ANY PERSON, CORPORATION OR OTHER ENTITY, DUPLICATED, AND/OR USED, EXCEPT AS EXPRESSLY APPROVED IN WRITING IN ADVANCE BY OWNER. THIS DOCUMENT SHALL BE RETURNED TO OWNER UPON REQUEST. IT MAY BE SUBJECT TO CERTAIN RESTRICTIONS UNDER APPLICABLE EXPORT CONTROL LAWS AND REGULATIONS.			THIRD ANGLE PROJECTION	PROCESS/FINISH			

REGAL® Regal Beloit America, Inc.

DESCRIPTION
OUTLINE
280TS FR. TEFC - UE

MATERIAL