

# PRODUCT INFORMATION PACKET



Model No: LM13946  
Catalog No: LM13946  
405T ODP 125HP1800 230460000/360

Regal and Leeson are trademarks of Regal Rexnord Corporation or one of its affiliated companies.  
©2023 Regal Rexnord Corporation, All Rights Reserved. MC017097E





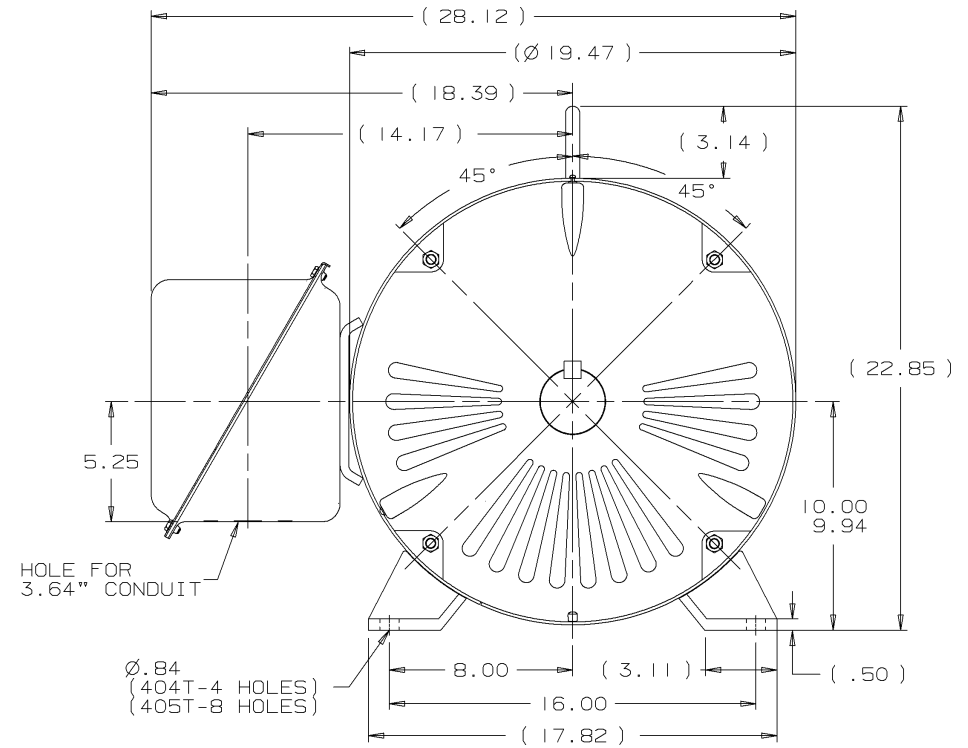
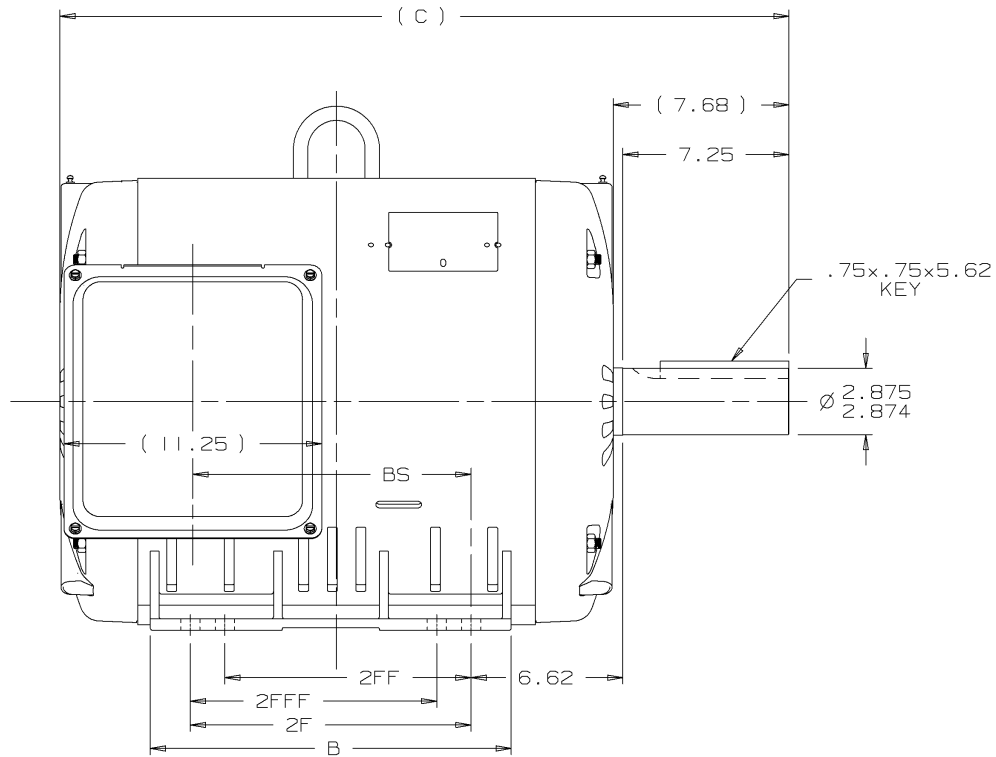
### Nameplate Specifications

Phase	3	Output HP	125 & 100 Hp
Output KW	93.0 & 75.0 kW	Voltage	230/460 & 190/380 V
Speed	1783 & 1483 rpm	Service Factor	1.25 & 1.15
Frame	405T	Enclosure	Drip Proof
Thermal Protection	No Protection	Efficiency	95.4 & 94.5 %
Ambient Temperature	40 °C	Frequency	60 & 50 Hz
Current	304/152 & 294/147 A	Power Factor	81.5
Duty	Continuous	Insulation Class	F
Design Code	BC	KVA Code	G
Drive End Bearing Size	6315	Opp Drive End Bearing Size	6313
UL	Recognized	CSA	Y
CE	Y	IP Code	22
Number of Speeds	1		

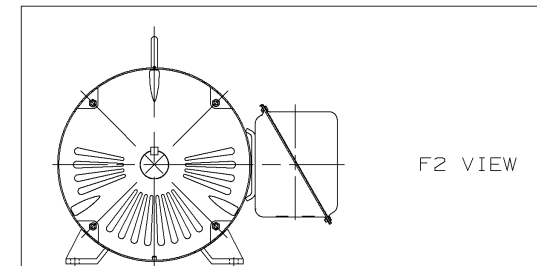
### Technical Specifications

Electrical Type	Squirrel Cage Induction Run	Starting Method	Wye Start Delta Run
Poles	4	Rotation	Reversible
Resistance Main	.039 Ohms	Mounting	Rigid Base
Motor Orientation	Horizontal	Drive End Bearing	Ball
Opp Drive End Bearing	Ball	Frame Material	Rolled Steel
Shaft Type	T	Assembly/Box Mounting	F1 ONLY
Outline Drawing	XJ2D1SS1-1885	Connection Drawing	EE7308AA-LN

This is an uncontrolled document once printed or downloaded and is subject to change without notice. Date Created:06/22/2023



- NOTES:  
 1. CONDUIT BOX CAN BE ROTATED IN 90° STEPS.  
 2. NAMEPLATES TO BE READ FROM CONDUIT BOX SIDE OF MOTOR.



DASH	FRAME	C	B	2F	2FF	2FFF	BS	REV	DATE	CHANGE	NAME	PART NAME	OUTLINE	NEMA MOTORS	DRWG NO
1735	404	31.81	15.75	12.25			12.14	1	08-31-2001	NEW DRAWING	TJB	400T ODP UE			XJ2DISSI
1885	405	33.31	17.25	13.75	10.75	10.75	13.64								

**Lincoln**  
MOTORS

✓	UNLESS OTHERWISE SPECIFIED DIMENSIONS ARE IN INCHES TOL. ON XX±.02 XXX±.005 XXXX±.0005 ANGLES± 7'30"	DRAWN BY	TJB	08-21-2001
MAX. SURFACE ROUGHNESS UNLESS OTHERWISE NOTED		CHKD BY	ML	08-23-2001
FINISH		APPD BY	HNH	08-29-2001
MATERIAL				

PART NAME OUTLINE NEMA MOTORS  
 400T ODP UE  
 DISTRIBUTION ~~XX~~ - ~~XX~~ - ~~XX~~ - BY CADD FILE NO. XJ2DISSI

T12 \_\_\_\_\_  
 T1 \_\_\_\_\_  
 T6 \_\_\_\_\_ L1  
 T7 \_\_\_\_\_

T2 \_\_\_\_\_  
 T4 \_\_\_\_\_  
 T8 \_\_\_\_\_ L2  
 T10 \_\_\_\_\_

T3 \_\_\_\_\_  
 T5 \_\_\_\_\_  
 T9 \_\_\_\_\_ L3  
 T11 \_\_\_\_\_

LOW VOLTAGE

T12 \_\_\_\_\_ L1  
 T1 \_\_\_\_\_  
 T4 \_\_\_\_\_  
 T7 \_\_\_\_\_  
 T2 \_\_\_\_\_  
 T10 \_\_\_\_\_ L2

T5 \_\_\_\_\_  
 T8 \_\_\_\_\_  
 T3 \_\_\_\_\_ L3  
 T11 \_\_\_\_\_

T6 \_\_\_\_\_  
 T9 \_\_\_\_\_

HIGH VOLTAGE



VIEW OF TERMINAL END

					✓ UNLESS OTHERWISE SPECIFIED DIMENSIONS ARE IN INCHES TOL. ON XX±.02 XXX±.005 XXXX±.0005 ANGLES± 7°30"		
2	08-09-1999	RE-ISSUE, ADDED '-' TO PART NUMBER	BLR		MAX. SURFACE ROUGHNESS UNLESS OTHERWISE NOTED		DRAWN BY TRB 07-16-1999
1	06-18-1999	NEW DRAWING	TRB		FINISH		CHKD BY ML 06-18-1999
					MATERIAL		APPD BY GK 06-18-1999
REV	DATE	CHANGE	NAME	PART NAME 3 PHASE CONNECTION DIAGRAM 2/1 DELTA - 12 LEADS			DRWG NO A- EE7308AA-LN
					PURCHASED	CADD FILE NO.	EE7308AALN

ERROR: undefined  
OFFENDING COMMAND: Pscrip  
STACK: