

# PRODUCT INFORMATION PACKET



Model No: LM13839  
Catalog No: LM13839  
General Purpose Motor, 50 & 40 HP, 3 Ph, 60 & 50 Hz, 230/460 & 380-415 V, 1800 & 1500 RPM,  
326TC Frame, DP



Regal and Leeson are trademarks of Regal Rexnord Corporation or one of its affiliated companies.  
©2023 Regal Rexnord Corporation, All Rights Reserved. MC017097E



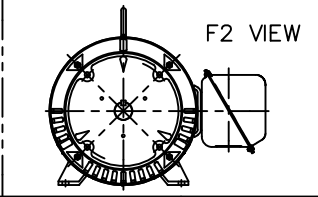
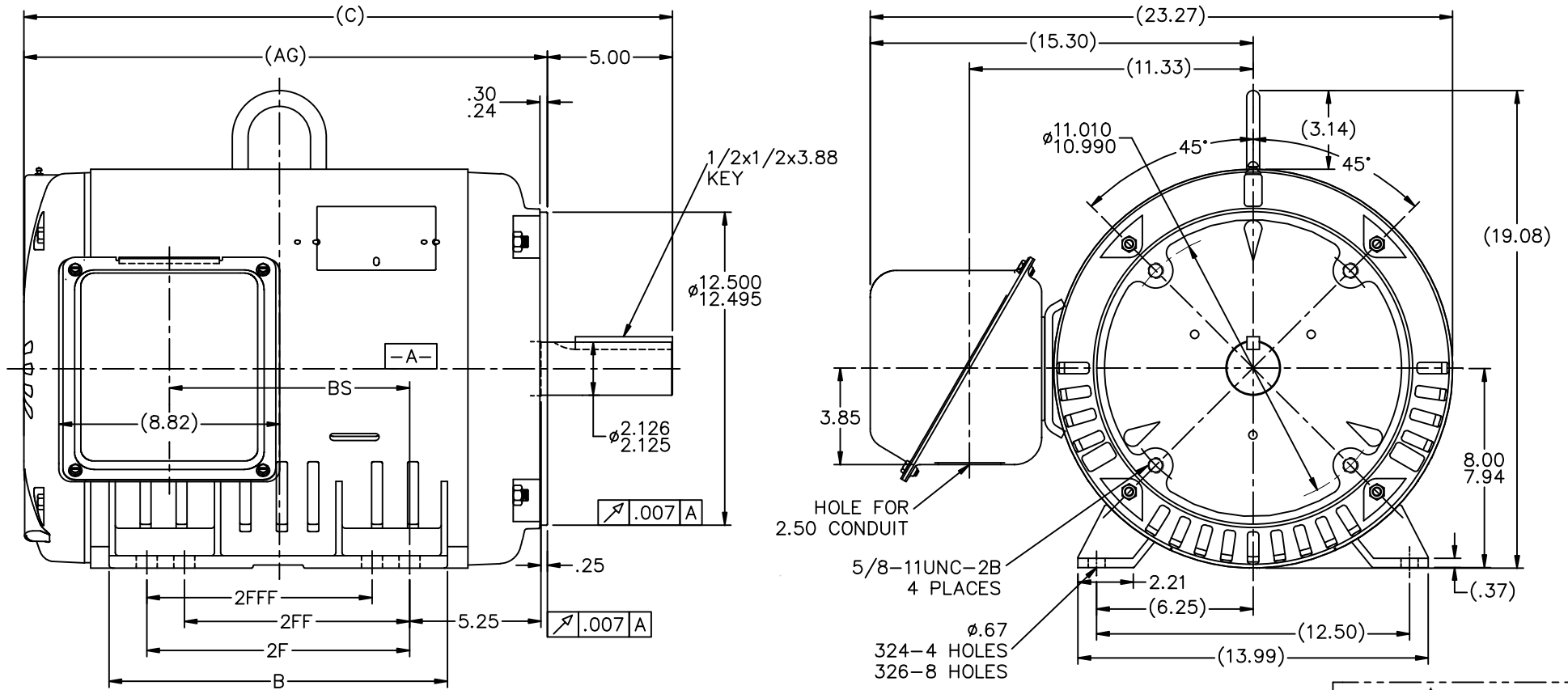


### Nameplate Specifications

Phase	<b>3</b>	Output HP	<b>50 &amp; 40 Hp</b>
Output KW	<b>37.0 &amp; 30.0 kW</b>	Voltage	<b>230/460 &amp; 380-415 V</b>
Speed	<b>1782 &amp; 1484 rpm</b>	Service Factor	<b>1.25 &amp; 1.0</b>
Frame	<b>326TC</b>	Enclosure	<b>Drip Proof</b>
Thermal Protection	<b>No Protection</b>	Efficiency	<b>94.5 &amp; 94.1 %</b>
Ambient Temperature	<b>40 °C</b>	Frequency	<b>60 &amp; 50 Hz</b>
Current	<b>131/65.5 &amp; 62-64 A</b>	Power Factor	<b>75.5</b>
Duty	<b>Continuous</b>	Insulation Class	<b>F</b>
Design Code	<b>B</b>	KVA Code	<b>F</b>
Drive End Bearing Size	<b>6311</b>	Opp Drive End Bearing Size	<b>6309</b>
UL	<b>Recognized</b>	CSA	<b>Y</b>
CE	<b>Y</b>	IP Code	<b>22</b>
Number of Speeds	<b>1</b>		

### Technical Specifications

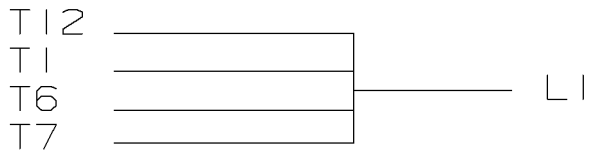
Electrical Type	<b>Squirrel Cage Induction Run</b>	Starting Method	<b>Wye Start Delta Run</b>
Poles	<b>4</b>	Rotation	<b>Reversible</b>
Resistance Main	<b>.105 Ohms</b>	Mounting	<b>Rigid Base</b>
Motor Orientation	<b>Horizontal</b>	Drive End Bearing	<b>Ball</b>
Opp Drive End Bearing	<b>Ball</b>	Frame Material	<b>Rolled Steel</b>
Shaft Type	<b>T</b>	Overall Length	<b>27.41 in</b>
Frame Length	<b>16.57 in</b>	Shaft Diameter	<b>2.125 in</b>
Shaft Extension	<b>5.25 in</b>	Assembly/Box Mounting	<b>F1 ONLY</b>
Outline Drawing	<b>XG2D1SC1-1657</b>	Connection Drawing	<b>A-EE7308AA-LN</b>



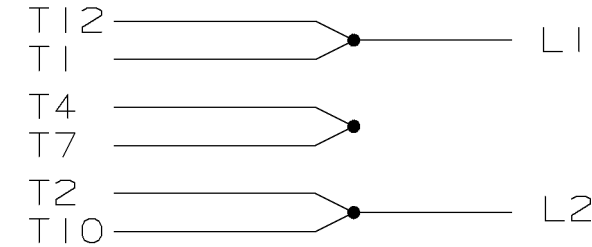
- NOTES:
1. CONDUIT BOX CAN BE ROTATED IN 90° STEPS.
  2. NAMEPLATES TO BE READ FROM CONDUIT BOX SIDE OF MOTOR.

DASH	FRAME	C	AG	BS	B	2F	2FF	2FFF
1507	324TC	25.91	20.91	9.65	13.52	10.50		
1657	326TC	27.41	22.41	11.15	15.02	12.00	10.50	10.50

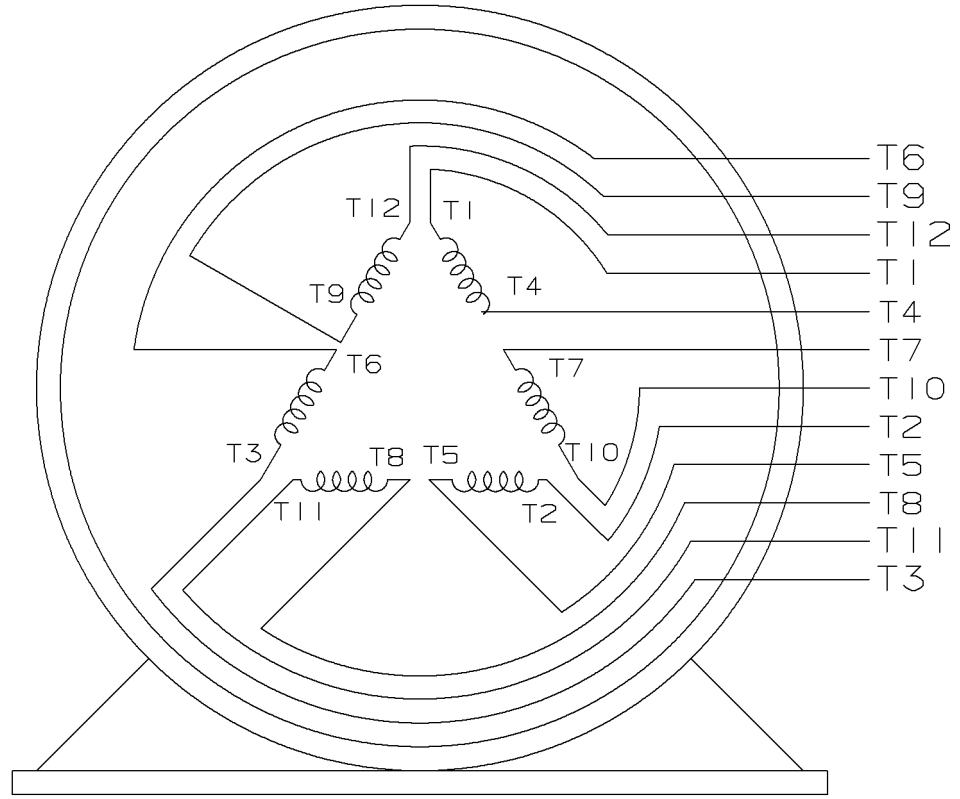
NO.		REVISION		BY & DATE		TOLERANCES UNLESS SPECIFIED		DEC. INCHES		TITLE		DRAWN ERH 03-15-2004	
4		REVISED KEY LENGTH FROM 2.00 TO 3.88	MU95871	JJB	7/1/2010	DD	.X	±.1			Lincoln Motors	CHK	ML 03-16-2004
3		REVISE 'BS' DIM. PER CUSTOMER ISAAC#08-3146		RWR	07-11-2008	MG	.XX	±.03		TITLE OUTLINE NEMA MOTORS		APPD	TB 03-16-2004
2		CHANGED CAD FILE NAME TO MATCH PART & REISSUED		CTO	10-14-2004	TB	.XXX	±.005		320TC ODP UE			SCALE 1=4
1		REV. PART # TO MATCH B.O.M. & REISSUED		CTO	04-08-2004	TB	.XXXX	±.0005		MAT'L			REF
NO.		REVISION		BY & DATE		CHK	ANG	±7'30"		FINISH		FMF	MU 50186
		THIS DRAWING IN DESIGN AND DETAIL IS OUR PROPERTY AND MUST NOT BE USED EXCEPT IN CONNECTION WITH OUR WORK ALL RIGHTS OF DESIGN AND INVENTION ARE RESERVED THIS IS AN ELECTRONICALLY GENERATED DOCUMENT - DO NOT SCALE THIS PRINT		RFP	03-16-2004					CAD FILE	xg2d1sc1	PREV	
				DIST	BY					SIZE	B	DRAWING NO.	XG2D1SC1
										PAGE	OF		REV.
													4



LOW VOLTAGE



HIGH VOLTAGE



VIEW OF TERMINAL END

					UNLESS OTHERWISE SPECIFIED DIMENSIONS ARE IN INCHES TOL. ON XX±.02 XXX±.005 XXXX±.0005 ANGLES± 7'30"		
2	08-09-1999	RE-ISSUE, ADDED '-' TO PART NUMBER	BLR		MAX. SURFACE ROUGHNESS UNLESS OTHERWISE NOTED		DRAWN BY TRB 07-16-1999
1	06-18-1999	NEW DRAWING	TRB	FINISH		CHKD BY ML 06-18-1999	
				MATERIAL		APPD BY GK 06-18-1999	
REV	DATE	CHANGE	NAME	PART NAME 3 PHASE CONNECTION DIAGRAM 2/1 DELTA - 12 LEADS			DRWG NO A- EE7308AA-LN

PURCHASED

CADD FILE NO.

EE7308AALN

ERROR: undefined  
OFFENDING COMMAND: Pscrip  
  
STACK:

Data Sheet

Date: 1/30/2018

LM13839



Data @ **460 V**

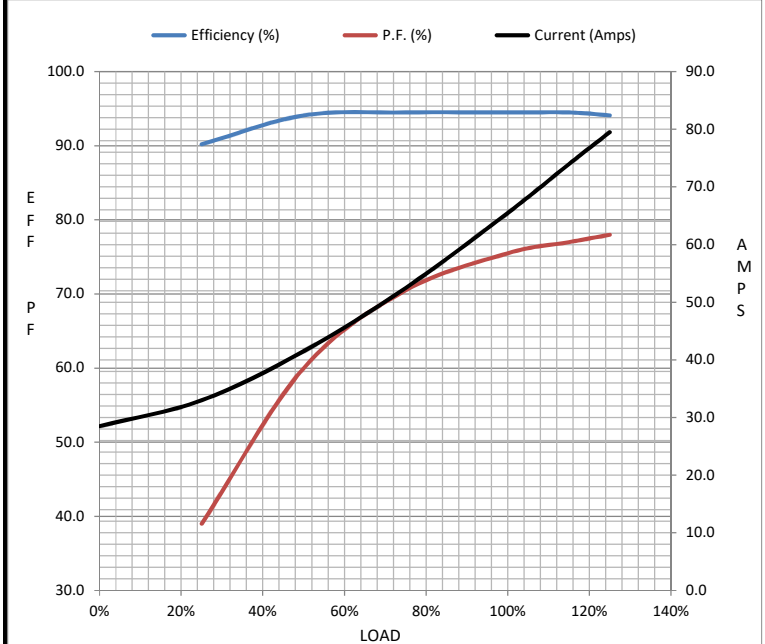
Motor Load Data

Load	0%	25%	50%	75%	100%	115%	125%	LR
Current (Amps)	28.5	33.0	41.5	52.5	65.5	74.0	79.5	325
Torque (ft-lb)	0.00	36.5	73.5	110	147	170	185	300
RPM	1800	1795	1792	1787	1782	1.780	1777	0
Efficiency (%)		90.2	94.1	94.5	94.5	94.5	94.1	
P.F. (%)	3.5	39.0	60.0	70.5	75.5	77.0	78.0	34.0

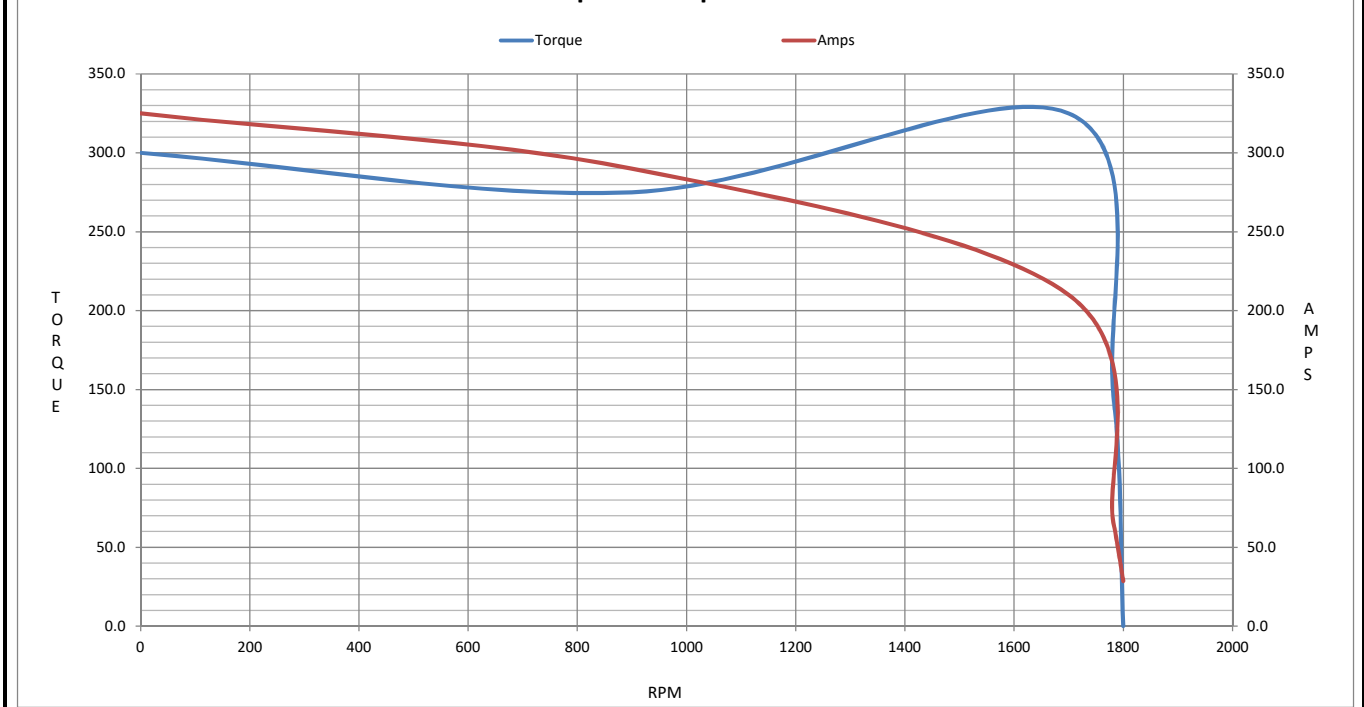
Motor Speed Data

	LR	Pull-Up	BD	Rated	Idle
Speed (RPM)	0	900	1700	1782	1800
Current (Amps)	325	290	210	65.5	28.5
Torque (ft-lb)	300	275	325	147	0.00

Information Block				
HP	50.0			
Sync. RPM	1800			
Frame	326			
Enclosure	DP			
Construction	TDR			
Voltage	230/460#380-415 V			
Frequency	60 Hz			
Design	B			
LR Code letter	F			
Service Factor	1.15			
Temp Rise @ FL	45 °C			
Duty	CONT			
Ambient	40 °C			
Elevation	1,000 feet			
Rotor/Shaft wk <sup>2</sup>	9.0 Lb-Ft <sup>2</sup>			
Ref Wdg	L3264039 NONE			
Sound Pressure @ 1M	75 dBA			
VFD Rating	NONE			
Outline Dwg	XG2D1SC1-1657			
Conn. Diag	A-EE7308AA-LN			
Additional Specifications:				
0				
0				
EQUIV CKT (OHMS / PHASE)				
R1	R2	X1	X2	Xm
0.0740	0.0450	0.4200	0.7430	9.1850



Speed - Torque Curve



## EC Declaration of Conformity

The undersigned representing  
the manufacturer:

Regal Beloit America  
100 East Randolph St.  
Wausau, WI 54401

and the authorized representative  
established within the Community:

Marathon Electric UK  
6F Thistleton Road Ind. Estate  
Market Overton  
Oakham, Rutland LE15 7PP UK

are committed to providing customers with products that comply with applicable regulations and international protocols to which they are subject, including the requirements of the European Parliament Directive on the Harmonization of the laws relating to electrical equipment designed for use within certain voltage limits (2014/35/EU).

Regal Beloit America declares that the following product(s), to which this declaration relates, are in conformity with the relevant sections of the EC standards listed below.

This statement supersedes any statements previously issued pertaining to the product(s) listed below and is subject to change without notice.

Model No : LM13839

(Model No. may contain prefix and/or suffix characters)

Catalog No : LM13839

Rework No : N/A

Directives :

Low Voltage Directive 2014/35/EU

Harmonized Standards Used :

EN 60034-1: 2010 (IEC 60034-1: 2010)

EN 60034-5: 2001/A1:2007 (IEC 60034-5: 2000/A1:2006)

Authorized Representative:



Michael A. Logsdon  
Vice President, Technology

Authorized Representative in the Community:



Julian Clark  
Marketing Engineer

Created on 11/23/2022

**CE 22**