

# PRODUCT INFORMATION PACKET



Model No: LM13832  
Catalog No: LM13832

General Purpose Motor, 400 & 350 HP, 3 Ph, 60 & 50 Hz, 460 & 415 V, 1800 & 1500 RPM, 449T Frame, DP



Regal and Leeson are trademarks of Regal Rexnord Corporation or one of its affiliated companies.  
©2023 Regal Rexnord Corporation, All Rights Reserved. MC017097E



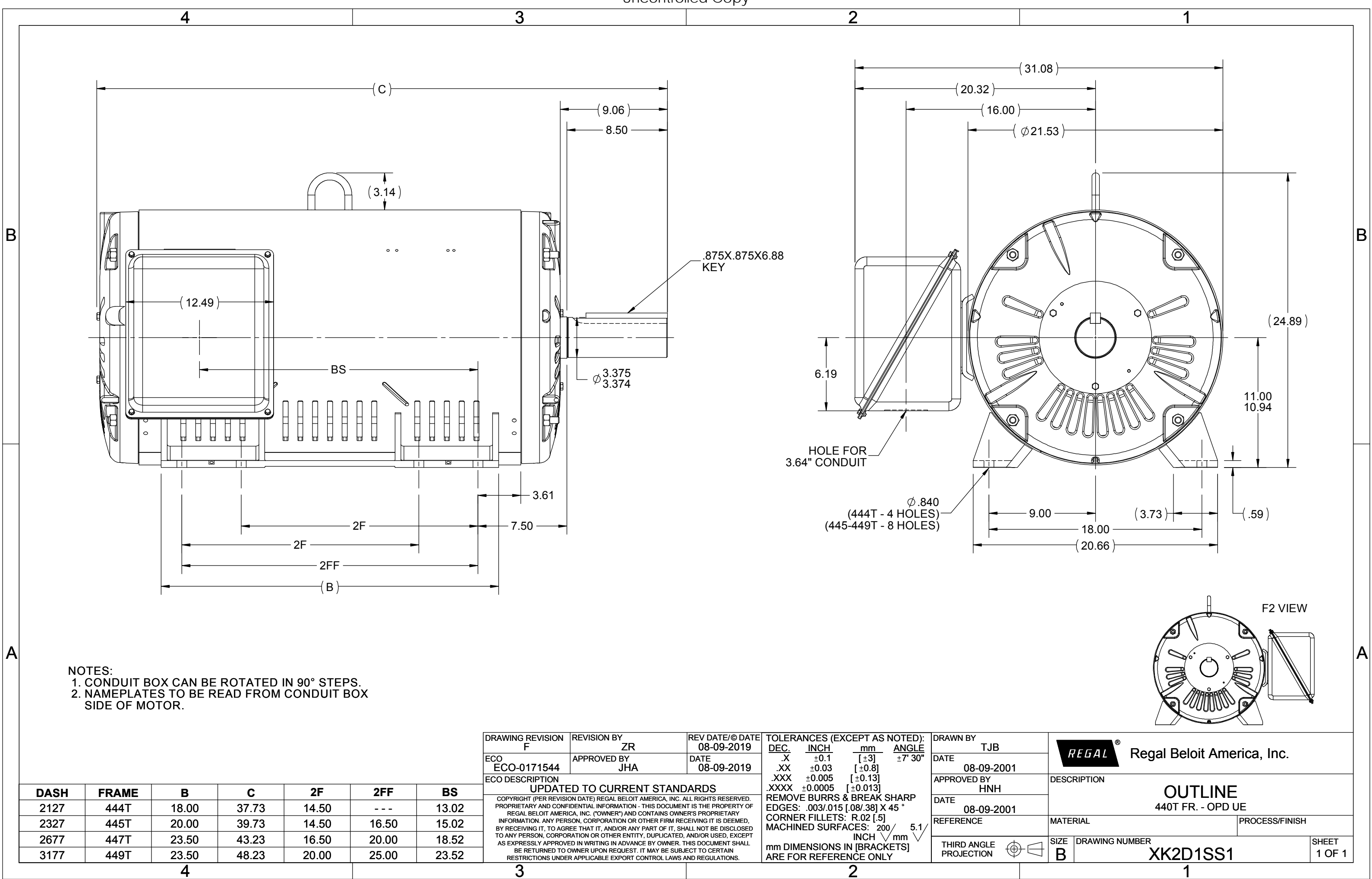


## Nameplate Specifications

Phase	3	Output HP	400 & 350 Hp
Output KW	300.0 & 260.0 kW	Voltage	460 & 415 V
Speed	1785 & 1485 rpm	Service Factor	1.15 & 1.0
Frame	449T	Enclosure	Drip Proof
Thermal Protection	No Protection	Efficiency	96.2 & 95.8 %
Ambient Temperature	40 °C	Frequency	60 & 50 Hz
Current	445 & 440 A	Power Factor	87.5
Duty	Continuous	Insulation Class	F
Design Code	BC	KVA Code	G
Drive End Bearing Size	318	Opp Drive End Bearing Size	315
UL	Recognized	CSA	Y
CE	Y	IP Code	22
Number of Speeds	1		

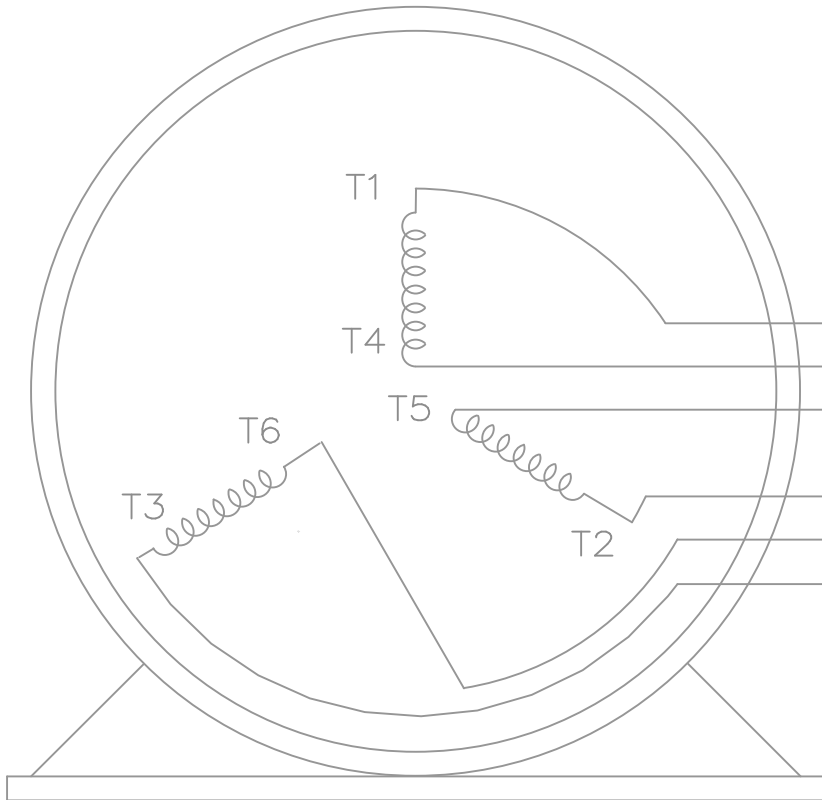
## Technical Specifications

Electrical Type	Squirrel Cage Induction Run	Starting Method	Wye Start Delta Run
Poles	4	Rotation	Reversible
Resistance Main	.01 Ohms	Mounting	Rigid Base
Motor Orientation	Horizontal	Drive End Bearing	Ball
Opp Drive End Bearing	Ball	Frame Material	Rolled Steel
Shaft Type	T	Overall Length	44.00 in
Frame Length	31.77 in	Shaft Diameter	2.375 in
Shaft Extension	4.75 in	Assembly/Box Mounting	F1 Only
Outline Drawing	XK2D1SS1-3177	Connection Drawing	A-EE7340-LN





THREE PHASE — Y START  
 Δ RUN MOTOR




T1 (U1)  
 T4 (U2)  
 T5 (V2)  
 T2 (V1)  
 T6 (W2)  
 T3 (W1)

T6CK  
 T6BM  
 T4CC  
 T2DL  
 T4C

NOTE:  
 IEC LEAD MARKINGS ARE NOTED  
 IN PARENTHESES

VIEW OF TERMINAL END

				TOLERANCES UNLESS SPECIFIED			DRAWN BLR 10-04-1999			
				DEC.	INCHES		CHK DRS 10-04-1999			
				.X	±.1		APPD TB 10-04-1999			
3	REVISED TO MATCH M.E. ORIGINAL	TAT 07-25-2005	ML	.XX	±.02	TITLE CONNECTION DIAGRAM 3ø – WYE START DELTA RUN	SCALE 1=1			
2	REVISED DRAWING MISTAKE CN 29200-2980	ERH 05-15-2003	ML	.XXX	±.005		REF			
1	NEW DRAWING	BLR 10-09-1999		.XXXX	±.0005	MAT'L.	FMF			
NO.	REVISION	BY & DATE	CHK	ANG	±7'30"	FINISH	PREV			
THIS DRAWING IN DESIGN AND DETAIL IS OUR PROPERTY AND MUST NOT BE USED EXCEPT IN CONNECTION WITH OUR WORK ALL RIGHTS OF DESIGN AND INVENTION ARE RESERVED THIS IS AN ELECTRONICALLY GENERATED DOCUMENT – DO NOT SCALE THIS PRINT			RFP		CAD FILE ee7340_In		SIZE	DRAWING NO.	PAGE OF	REV.
			DIST WA-LB-SB				A	EE7340-LN		3



1051 CHEYENNE AVE.  
GRAFTON, WI 53024  
PH. 262-277-8810

DATA VOLTS: 460

### CERTIFICATION DATA SHEET

CONN. DIAGRAM: A-EE7340-LN  
OUTLINE: XK2D1SS1-3177  
WINDING: L4494003

CAT #: LM13832

NONE 1

### TYPICAL MOTOR PERFORMANCE DATA

HP	KW	SYNC RPM	FL RPM	FRAME	ENCLOSURE	TYPE	KVA CODE	DESIGN
400	298	1800	1785	449T	DP	TDR	G	BC

PH	HZ	VOLTS	AMPS	START TYPE	DUTY	INSL	S.F.	AMB	ELEV.
3	60/50	460#415	445&440	VVE START DELTA RUN	CONT	F	1.15	40	3300

F.L. EFF	96.2	3/4 LD EFF	96.5	1/2 LD EFF	96.8	GTD EFF	ELECT. TYPE
F.L. PF	87.5	3/4 LD PF	86.5	1/2 LD PF	81.5	95.0	SQ CAGE IND RUN

F.L. TORQUE	LR AMPS @ 460 V	L.R. TORQUE	B.D. TORQUE	F.L. RISE (° C)
1,177 LB-FT	2,800	2,760 LB-FT 234%	2,450 LB-FT 208%	85

PRESSURE @ 3	SOUND	POWER	ROTOR WK²	MAX. LOAD WK²	SAFE STALL TIME	STARTS/HOUR	MOTOR WGT
999 dBA	1008 dBA		0.00 LB-FT²	0 LB-FT²	0 SEC.	0	0 LB.

### \*\*\* SUPPLEMENTAL INFORMATION \*\*\*

DE BRACKET TYPE	ODE BRACKET TYPE	MOUNT TYPE	MOTOR ORIENTATION	SEVERE DUTY	HAZARDOUS LOCATION	DRIP COVER	SCREENS	PAINT
STANDARD	STANDARD	RIGID	HORIZONTAL	NO	NONE	NO	NONE	WATTSaver

BEARINGS	GREASE	SHAFT TYPE	SPECIAL DE	SPECIAL ODE	SHAFT MATERIAL	FRAME MATERIAL
DE ODE						
BALL BALL	POLYREX EM	T	NONE	NONE	1045 HOT ROLLED (C-204)	ROLLED STEEL
318 315						

THERMOSTATS	PROTECTORS	WDG RTD's	BRG RTD's	THERMISTORS	CONTROL	SPACE HEATERS
NONE	NOT	NONE	NONE	NONE	FALSE	NA

R1 (ohms/ph)	R2 (ohms/ph)	X1 (ohms/ph)	X2 (ohms/ph)	Xm (ohms/ph)	VIBRATION (in/sec)	FLOAT
0.008	0.005	0.065	0.092	2.425	0.150	ODE

* N O T E S *		INVERTER TORQUE: NONE INV. HP SPEED RANGE: NONE
	ENCODER: NONE NONE NONE	NONE PPR

DATE: 9/10/2018	BRAKE: NONE NONE	NONE
	FT-LB: NA	
	VOLTAGE: NONE	HZ:
UL: V-INS, CONST UL REC		

## Data Sheet

Date: 9/10/2018

LM13832



Data @ 460 V

## Motor Load Data

Load	0%	25%	50%	75%	100%	115%	125%	LR	
Current (Amps)	108	153	237	336	445	517	566	2,800	
Torque (ft-lb)	0.00	292	586	881	1,177	1,356	1,473	2,760	
RPM	1800	1795	1793	1790	1785	1,782	1780	0	
Efficiency (%)		95.4	96.8	96.5	96.2	95.4	95.4		
P.F. (%)	3.2	64.0	81.5	86.5	87.5	87.0	86.5	40.5	

## Motor Speed Data

	LR	Pull-Up	BD	Rated	Idle	Information Block	
Speed (RPM)	0	900	1725	1785	1800	HP	400.0
Current (Amps)	2,800	2,525	1,820	445	108	Sync. RPM	1800
Torque (ft-lb)	2,760	2,500	2,450	1,177	0.00	Frame	449
						Enclosure	DP
						Construction	TDR
						Voltage	460#415 V
						Frequency	60 Hz
						Design	A
						LR Code letter	G
						Service Factor	1.15
						Temp Rise @ FL	85 ° C
						Duty	CONT
						Ambient	40 ° C
						Elevation	1,000 feet
						Rotor/Shaft wk <sup>2</sup>	0.00 Lb-Ft <sup>2</sup>
						Ref Wdg	L4494003 NONE
						Sound Pressure @ 1M	999 dBA
						VFD Rating	NONE
						Outline Dwg	XK2D1SS1-3177
						Conn. Diag	A-EE7340-LN
Additional Specifications:						EQUIV CKT (OHMS / PHASE)	
0						R1	R2
0						X1	X2
						Xm	
						0.0080	0.0050
						0.0650	0.0920
						2.4250	

## Speed - Torque Curve

