

PRODUCT INFORMATION PACKET



Model No: LM13795
Catalog No: LM13795
200,3600,DP,444TSC,3/60/460

Regal and Leeson are trademarks of Regal Rexnord Corporation or one of its affiliated companies.
©2023 Regal Rexnord Corporation, All Rights Reserved. MC017097E





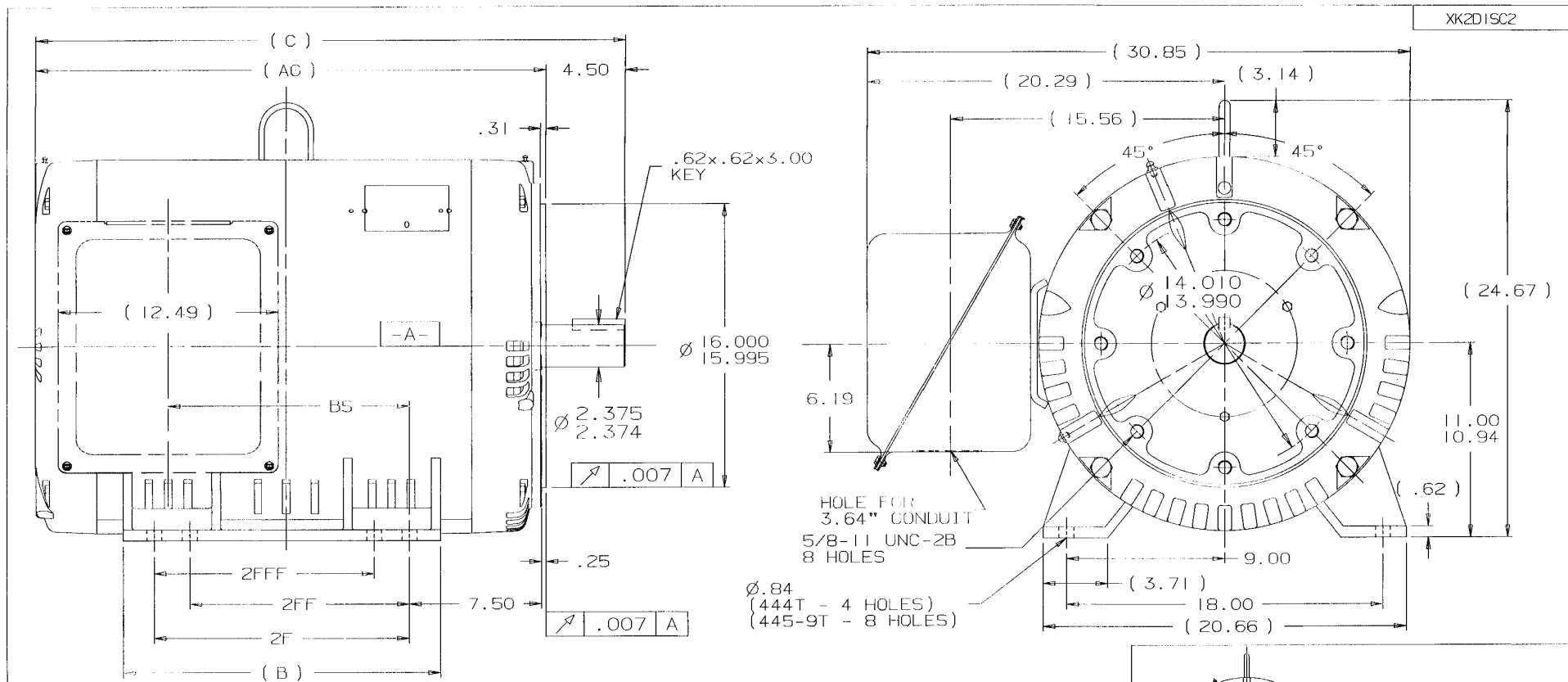
Nameplate Specifications

Phase	3	Output HP	200 & 200 Hp
Output KW	149.0 & 149.0 kW	Voltage	460 & 380-415 V
Speed	3570 & 2970 rpm	Service Factor	1.25 & 1.15
Frame	444TSC	Enclosure	Drip Proof
Thermal Protection	No Protection	Efficiency	95.8 & 94.1 %
Ambient Temperature	40 °C	Frequency	60 & 50 Hz
Current	216 & 258-243 A	Power Factor	90.5
Duty	Continuous	Insulation Class	F
Design Code	B	KVA Code	F
Drive End Bearing Size	315	Opp Drive End Bearing Size	315
UL	Recognized	CSA	Y
CE	Y	IP Code	22
Number of Speeds	1		

Technical Specifications

Electrical Type	Squirrel Cage Induction Run	Starting Method	Wye Start Delta Run
Poles	2	Rotation	Reversible
Resistance Main	.02 Ohms	Mounting	Rigid Base
Motor Orientation	Horizontal	Drive End Bearing	Ball
Opp Drive End Bearing	Ball	Frame Material	Rolled Steel
Shaft Type	TS	Assembly/Box Mounting	F1/F2 CAPABLE
Outline Drawing	XK2D1SC2-2127	Connection Drawing	A-EE7340-LN

This is an uncontrolled document once printed or downloaded and is subject to change without notice. Date Created:06/22/2023



NOTES:

1. CONDUIT BOX CAN BE ROTATED IN 90° STEPS.
2. NAMEPLATES TO BE READ FROM CONDUIT BOX SIDE OF MOTOR.

DASH	FRAME	C	AG	B	2F	2FF	2FFF	BS	REV	DATE	CHANGE	NAME	DRS	PART NAME	DRAWG NO
2127	444TS	33.50	29.00	18.00	14.50	---	---	13.96	3	10-30-2001	ADDED 447 AND 449 FRAMES MU39294	DRS	✓	OUTLINE NEMA MOTORS	XK2D1SC2
2327	445TS	35.50	31.00	20.00	16.50	14.50	14.50	15.96	2	10-28-2001	GEOMETRIC TOLERANCES WERE .004 SHOULD BE .007 CN 29200 2092	DRS	✓	440TS OPD UE	
2677	447TS	39.00	34.50	23.50	20.00	16.50	16.50	19.46	1	08-30-2001	NEW DRAWING REPLACES 3XSD122FCSK-1 CN 34258	TJB	✓		
3177	449TS	44.00	39.50	28.50	25.00	20.00	20.00	23.71							

PURCHASED

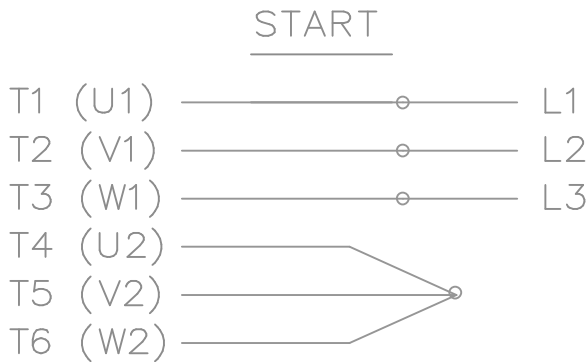
DISTRIBUTION ~~XX~~ - ~~XX~~ - ~~XX~~ - BY CAD FILE NO.

XK2D1SC2

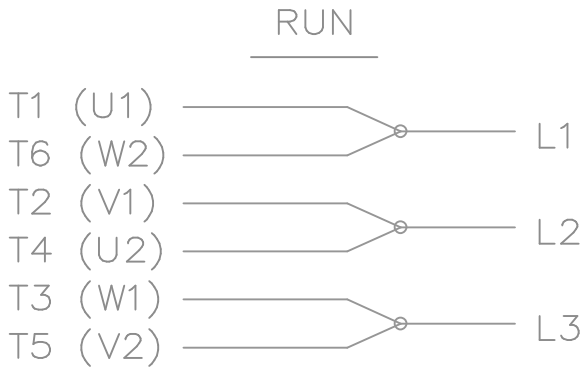
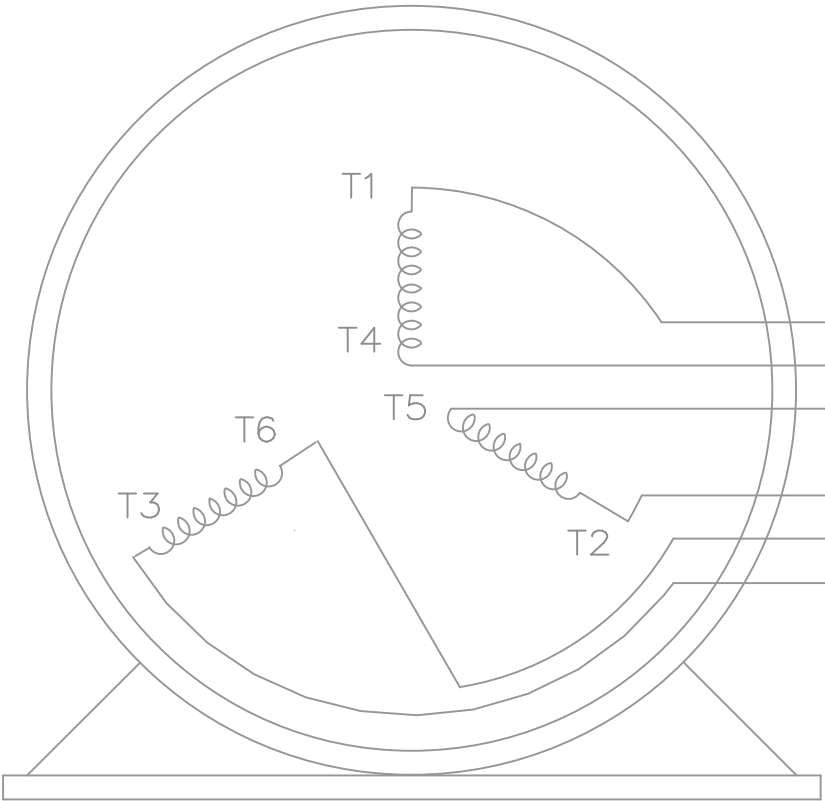
ERROR: syntaxerror
OFFENDING COMMAND: --nostringval--

STACK:

174
/hyphen
173
/logicalnot
172
/guillemotleft
171
/ordfeminine
170
/copyright
169
/dieresis
168
/section
167
/brokenbar
166
/yen
165
/currency
164
/exclamdown
161
/space
160
/Ydieresis
159
/oe
156
/guilsinglright
155
/scaron
154
/trademark
153
/tilde
152
/emdash
151
/endash
150
/bullet
149
/quotedblright
148
/quotedblleft
147
/quoteright
146
/quoteleft
145
/OE
140
/guilsinglleft
139
/Scaron
138
/perthousand
137
/circumflex
136
/daggerdbl
135
/dagger
134
/ellipsis
133
/quotedblbase



THREE PHASE — Y START
 Δ RUN MOTOR




T1 (U1)
 T4 (U2)
 T5 (V2)
 T2 (V1)
 T6 (W2)
 T3 (W1)

T6CK
 T6BM
 T4CC
 T2DL
 T4C

NOTE:
 IEC LEAD MARKINGS ARE NOTED
 IN PARENTHESES

VIEW OF TERMINAL END

			TOLERANCES UNLESS SPECIFIED			DRAWN BLR 10-04-1999		
			DEC.	INCHES		CHK DRS 10-04-1999		
			.X	±.1		APPD TB 10-04-1999		
3	REVISED TO MATCH M.E. ORIGINAL	TAT 07-25-2005	ML	.XX	±.02	TITLE CONNECTION DIAGRAM 3Ø — WYE START DELTA RUN	SCALE 1=1	
2	REVISED DRAWING MISTAKE CN 29200-2980	ERH 05-15-2003	ML	.XXX	±.005		REF	
1	NEW DRAWING	BLR 10-09-1999		.XXXX	±.0005		FMF	
NO.	REVISION	BY & DATE	CHK	ANG	±'30"	FINISH	PREV	
THIS DRAWING IN DESIGN AND DETAIL IS OUR PROPERTY AND MUST NOT BE USED EXCEPT IN CONNECTION WITH OUR WORK ALL RIGHTS OF DESIGN AND INVENTION ARE RESERVED THIS IS AN ELECTRONICALLY GENERATED DOCUMENT — DO NOT SCALE THIS PRINT			RFP	CAD FILE ee7340_In		SIZE A	DRAWING NO. EE7340-LN	PAGE OF 3
			DIST	WA-LB-SB				