

PRODUCT INFORMATION PACKET



Model No: LM13767

Catalog No: LM13767

General Purpose Motor, 350 & 350 HP, 3 Ph, 60 & 50 Hz, 460 & 415 V, 3600 & 3000 RPM, 447TS Frame,
DP



Regal and Leeson are trademarks of Regal Rexnord Corporation or one of its affiliated companies.

©2023 Regal Rexnord Corporation, All Rights Reserved. MC017097E



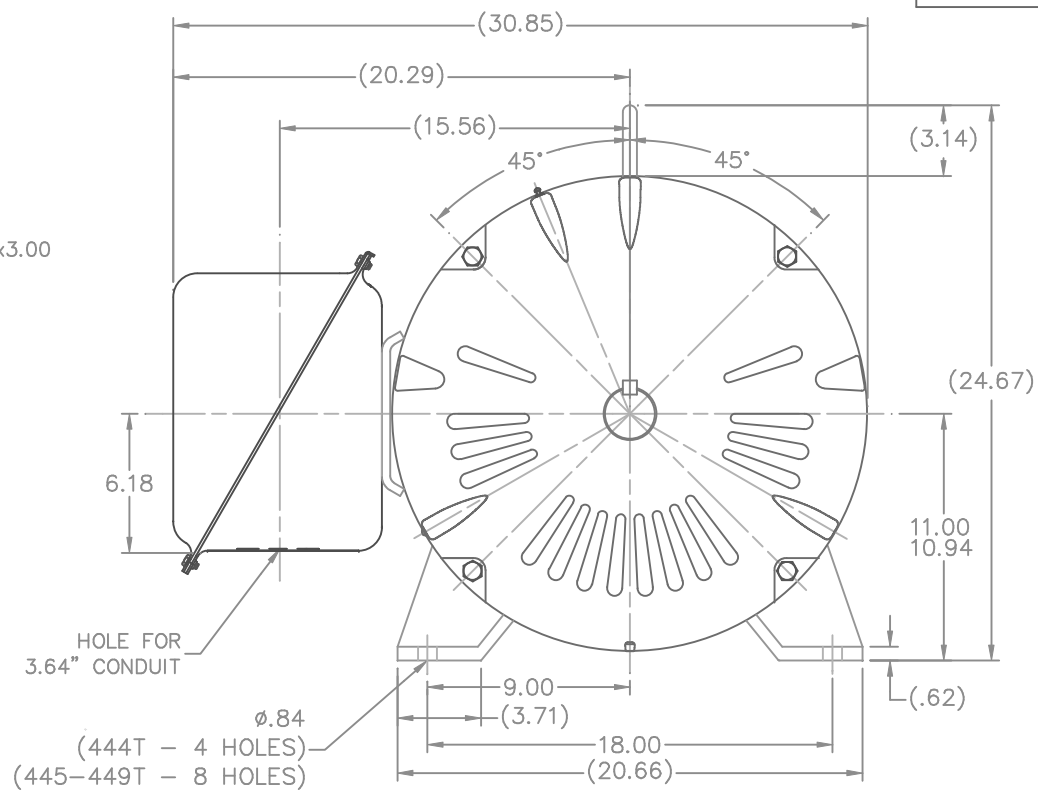
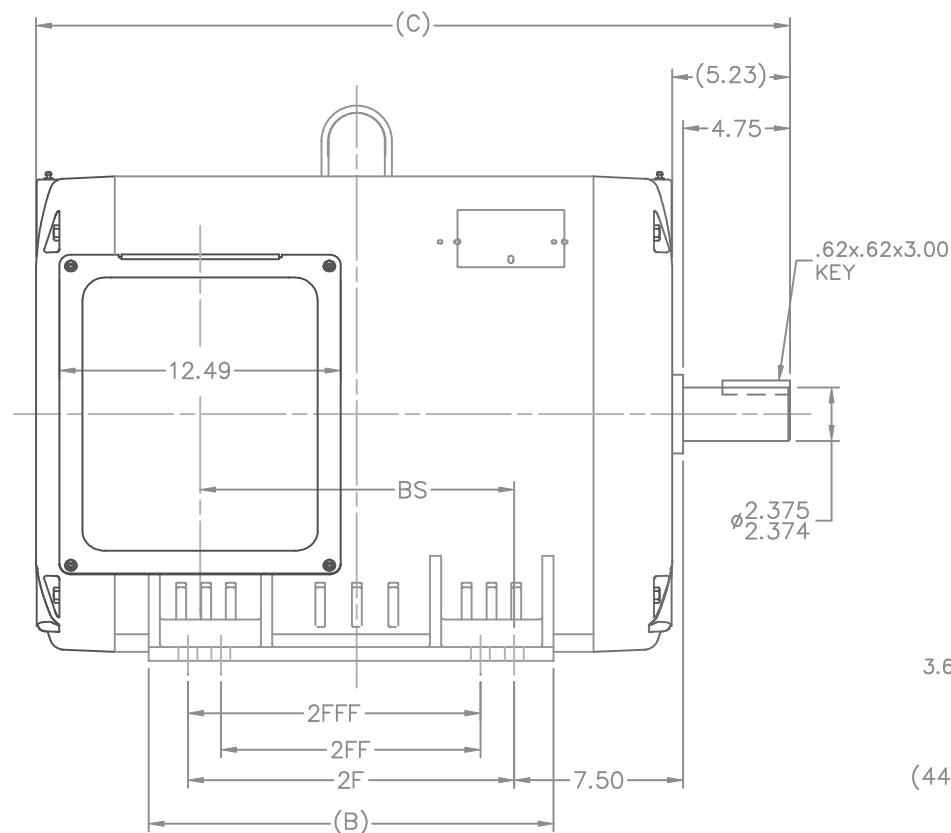


Nameplate Specifications

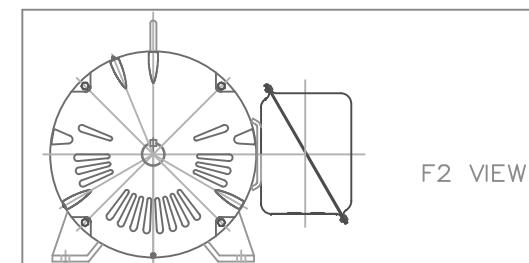
Phase	3	Output HP	350 & 350 Hp
Output KW	260.0 & 260.0 kW	Voltage	460 & 415 V
Speed	3575 & 2975 rpm	Service Factor	1.15 & 1.0
Frame	447TS	Enclosure	Drip Proof
Thermal Protection	No Protection	Efficiency	95.8 & 95.4 %
Ambient Temperature	40 °C	Frequency	60 & 50 Hz
Current	365 & 410 A	Power Factor	91
Duty	Continuous	Insulation Class	F
Design Code	B	KVA Code	G
Drive End Bearing Size	315	Opp Drive End Bearing Size	315
UL	Recognized	CSA	Y
CE	Y	IP Code	22
Number of Speeds	1		

Technical Specifications

Electrical Type	Squirrel Cage Induction Run	Starting Method	Wye Start Delta Run
Poles	2	Rotation	Reversible
Resistance Main	.015 Ohms	Mounting	Rigid Base
Motor Orientation	Horizontal	Drive End Bearing	Ball
Opp Drive End Bearing	Ball	Frame Material	Rolled Steel
Shaft Type	TS	Overall Length	39.00 in
Frame Length	26.77 in	Shaft Diameter	2.375 in
Shaft Extension	4.75 in	Assembly/Box Mounting	F1 ONLY
Outline Drawing	XK2D1SS2-2677	Connection Drawing	A-EE7340-LN



- NOTES:
 1. CONDUIT BOX CAN BE ROTATED IN 90° STEPS.
 2. NAMEPLATES TO BE READ FROM CONDUIT BOX
 SIDE OF MOTOR.



DASH	FRAME	C	B	BS	2F	2FF	2FFF	NO.	REVISION	BY & DATE	CHK	ANG	±1/2"	FINISH	CAD FILE	SIZE	DRAWING NO.	REV.
2127	444TS	33.50	18.00	13.96	14.50			4	REVISED FROM 4 TO 4-8 HOLES PER CN 37556	CTO 12-17-2001	.X	±.1						
2327	445TS	35.50	20.00	15.96	16.50	14.50	14.50	3	ADDED DASHES 2677 & 3177 CN 29200-2314	CTO 03-22-03	.XX	±.03						
2677	447TS	39.00	23.50	19.46	20.00	16.50	16.50	2	ADDED DASH 2327 CN 29200-2238	NJS 02-22-02	.XXX	±.005						
3177	449TS	44.00	28.50	24.46	25.00	20.00	20.00	1	NEW DRAWING - REPLACES 3XSD134FSSK-1 MU38160	TJB 08-30-01	.ML	±.0005						
									THIS DRAWING IN DESIGN AND DETAIL IS OUR PROPERTY AND MUST NOT BE USED EXCEPT IN CONNECTION WITH OUR WORK ALL RIGHTS OF DESIGN AND INVENTION ARE RESERVED THIS IS AN ELECTRONICALLY GENERATED DOCUMENT - DO NOT SCALE THIS PRINT									
									RFP									
									DIST BY									

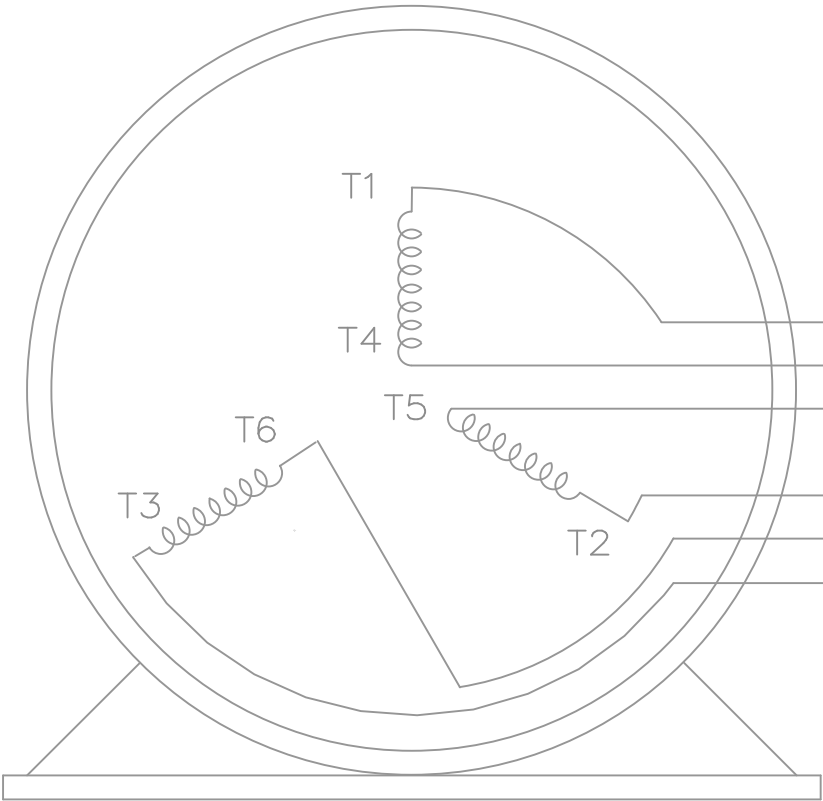


DRAWN TJB 08-08-2001
 CHK ML 08-23-2001
 APPD HNH 08-30-2001
 SCALE 1=5.5
 REF
 FMF
 PREV

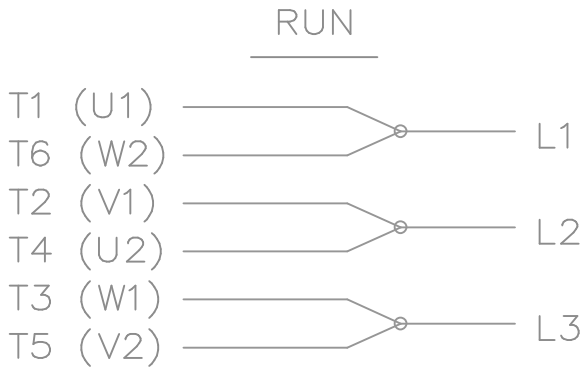
TITLE OUTLINE NEMA MOTORS
 440TS OPD UE



THREE PHASE — Y START
 Δ RUN MOTOR




T1 (U1)
 T4 (U2)
 T5 (V2)
 T2 (V1)
 T6 (W2)
 T3 (W1)



VIEW OF TERMINAL END

T6CK
 T6BM
 T4CC
 T2DL
 T4C

NOTE:
 IEC LEAD MARKINGS ARE NOTED
 IN PARENTHESES

				TOLERANCES UNLESS SPECIFIED			DRAWN BLR 10-04-1999				
				DEC.	INCHES		CHK DRS 10-04-1999				
				.X	±.1		APPD TB 10-04-1999				
3	REVISED TO MATCH M.E. ORIGINAL	TAT 07-25-2005	ML	.XX	±.02	TITLE CONNECTION DIAGRAM 3ø – WYE START DELTA RUN			SCALE 1=1		
2	REVISED DRAWING MISTAKE CN 29200-2980	ERH 05-15-2003	ML	.XXX	±.005				REF		
1	NEW DRAWING	BLR 10-09-1999		.XXXX	±.0005	MAT'L.			FMF		
NO.	REVISION	BY & DATE	CHK	ANG	±7'30"	FINISH			PREV		
THIS DRAWING IN DESIGN AND DETAIL IS OUR PROPERTY AND MUST NOT BE USED EXCEPT IN CONNECTION WITH OUR WORK ALL RIGHTS OF DESIGN AND INVENTION ARE RESERVED THIS IS AN ELECTRONICALLY GENERATED DOCUMENT – DO NOT SCALE THIS PRINT			RFP		CAD FILE ee7340_In			SIZE	DRAWING NO.	PAGE OF	REV.
			DIST WA-LB-SB					A	EE7340-LN	3	3



**2100 WASHINGTON ST.
GRAFTON, WI
PH. 262-277-8810**

CERTIFICATION DATA SHEET

CONN. DIAGRAM: A-EE7340-LN

CATALOG #: LM13767

OUTLINE: XK2D1SS2-2677

WINDING #: L4472006 1

MOUNTING: F1 ONLY

TYPICAL MOTOR PERFORMANCE DATA

HP	kW	SYNC. RPM	F.L. RPM	FRAME	ENCLOSURE	KVA CODE	DESIGN
350&350	260&260	3600	3570&2970	447TS	DP	G	B

PH	Hz	VOLTS	AMPS	START TYPE	DUTY	INSL	S.F.	AMB°C
3	60/50	460&415	369&408	WYE START DELTA RUN	CONTINUOUS	F4	1.15/1.0	40

FULL LOAD EFF:	95.4&95	3/4 LOAD EFF:	95.8	1/2 LOAD EFF:	95.8	GTD. EFF		ELEC. TYPE
FULL LOAD PF:	93&92	3/4 LOAD PF:	93	1/2 LOAD PF:	91	94.5		SQ CAGE IND RUN

F.L. TORQUE	LOCKED ROTOR AMPS	L.R. TORQUE	B.D. TORQUE	F.L. RISE°C
515 LB-FT	2450	800 LB-FT 155 %	1250 LB-FT 243 %	75

SOUND PRESSURE @ 3 FT.	SOUND POWER	ROTOR WK^2	MAX. WK^2	SAFE STALL TIME	STARTS / HOUR	APPROX. MOTOR WGT
- dBA	- dBA	0 LB-FT^2	- LB-FT^2	- SEC.	-	- LBS.

***** SUPPLEMENTAL INFORMATION *****

DE BRACKET TYPE	ODE BRACKET TYPE	MOUNT TYPE	ORIENTATION	SEVERE DUTY	HAZARDOUS LOCATION	DRIP COVER	SCREENS	PAINT
STANDARD	STANDARD	RIGID	HORIZONTAL	FALSE	NONE	FALSE	NONE	GRAY - LINCOLN

BEARINGS		GREASE	SHAFT TYPE	SPECIAL DE	SPECIAL ODE	SHAFT MATERIAL	FRAME MATERIAL
DE	ODE						
BALL	BALL						
315	315	POLYREX EM	TS	NONE	NONE	1045 HOT ROLLED (C-204)	ROLLED STEEL

THERMO-PROTECTORS				THERMISTORS	CONTROL	SPACE HEATERS
THERMOSTATS	PROTECTORS	WDG RTDs	BRG RTDs			
NONE	NOT	NONE	NONE	NONE	FALSE	NONE VOLTS

*

N

O

T

E

S

*

INVERTER TORQUE: NONE
INV. HP SPEED RANGE: NONE
ENCODER: NONE NONE NONE NONE NONE PPR
BRAKE: NONE NONE NONE P/N NONE NONE NONE NONE FT-LB NONE V NONE Hz

Data Sheet

Date: 1/24/2018

LM13767



Data @ 460 V

Motor Load Data

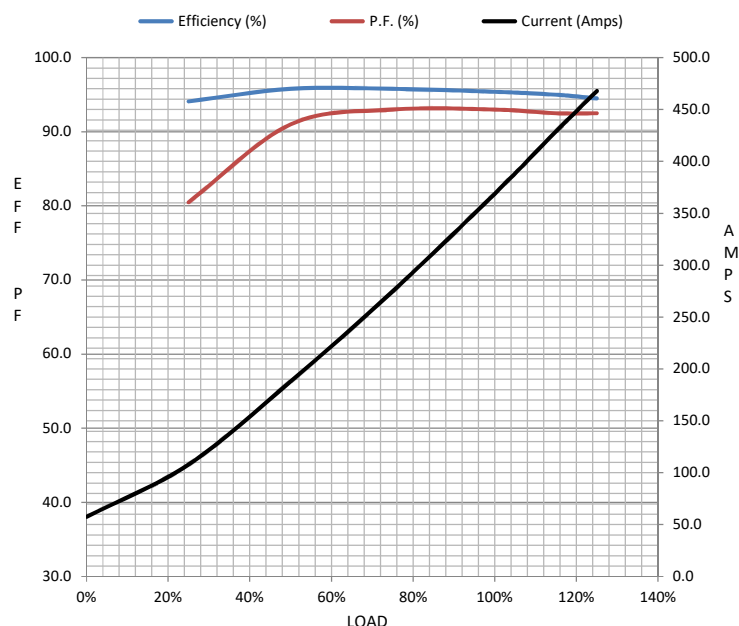
Load	0%	25%	50%	75%	100%	115%	125%	LR	
Current (Amps)	57.5	108	188	275	369	429	468	2,450	
Torque (ft-lb)	0.00	128	256	385	515	593	645	800	
RPM	3600	3595	3585	3580	3570	3,565	3560	0	
Efficiency (%)		94.1	95.8	95.8	95.4	95.0	94.5		
P.F. (%)	7.0	80.5	91.0	93.0	93.0	92.5	92.5	29.0	

Motor Speed Data

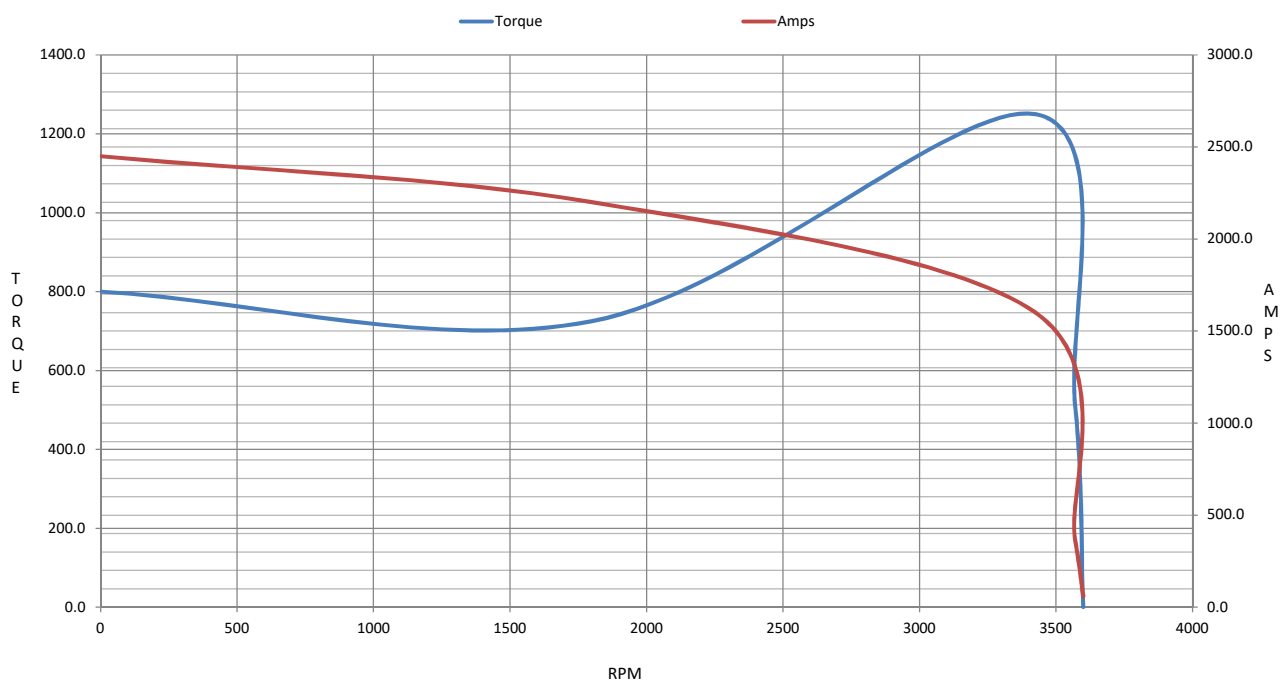
	LR	Pull-Up	BD	Rated	Idle
Speed (RPM)	0	1800	3425	3570	3600
Current (Amps)	2,450	2,200	1,600	369	57.5
Torque (ft-lb)	800	725	1,250	515	0.00

Information Block

HP	350.0			
Sync. RPM	3600			
Frame	447			
Enclosure	DP			
Construction	TDR			
Voltage	460#415	V		
Frequency	60	Hz		
Design	A			
LR Code letter	G			
Service Factor	1.15			
Temp Rise @ FL	75	° C		
Duty	CONT			
Ambient	40	° C		
Elevation	1,000	feet		
Rotor/Shaft wk²	0.00	Lb-Ft²		
Ref Wdg	L4472006	NONE		
Sound Pressure @ 1M	999	dBA		
VFD Rating	NONE			
Outline Dwg	XK2D1SS2-2677			
Conn. Diag	A-EE7340-LN			
Additional Specifications:				
0				
0				
EQUIV CKT (OHMS / PHASE)				
R1	R2	X1	X2	Xm
0.0140	0.0060	0.0850	0.0580	4.6330



Speed - Torque Curve



EC Declaration of Conformity

The undersigned representing
the manufacturer:

Regal Beloit America
100 East Randolph St.
Wausau, WI 54401

and the authorized representative
established within the Community:

Marathon Electric UK
6F Thistleton Road Ind. Estate
Market Overton
Oakham, Rutland LE15 7PP UK

are committed to providing customers with products that comply with applicable regulations and international protocols to which they are subject, including the requirements of the European Parliament Directive on the Harmonization of the laws relating to electrical equipment designed for use within certain voltage limits (2014/35/EU).

Regal Beloit America declares that the following product(s), to which this declaration relates, are in conformity with the relevant sections of the EC standards listed below.

This statement supersedes any statements previously issued pertaining to the product(s) listed below and is subject to change without notice.

Model No : LM13767

(Model No. may contain prefix and/or suffix characters)

Catalog No : LM13767

Rework No : N/A

Directives :

Low Voltage Directive 2014/35/EU

Harmonized Standards Used :

EN 60034-1: 2010 (IEC 60034-1: 2010)

EN 60034-5: 2001/A1:2007 (IEC 60034-5: 2000/A1:2006)

Authorized Representative:



Michael A. Logsdon
Vice President, Technology

Authorized Representative in the Community:



Julian Clark
Marketing Engineer

Created on 09/01/2022

CE 22