

PRODUCT INFORMATION PACKET



Model No: LM13764
Catalog No: LM13764
300 HP, General Purpose Motors, 3 phase, 3600 RPM, 460 V, 447TS Frame, DP
General Purpose Motors



Regal and Leeson are trademarks of Regal Rexnord Corporation or one of its affiliated companies.
©2021 Regal Rexnord Corporation, All Rights Reserved. MC017097E





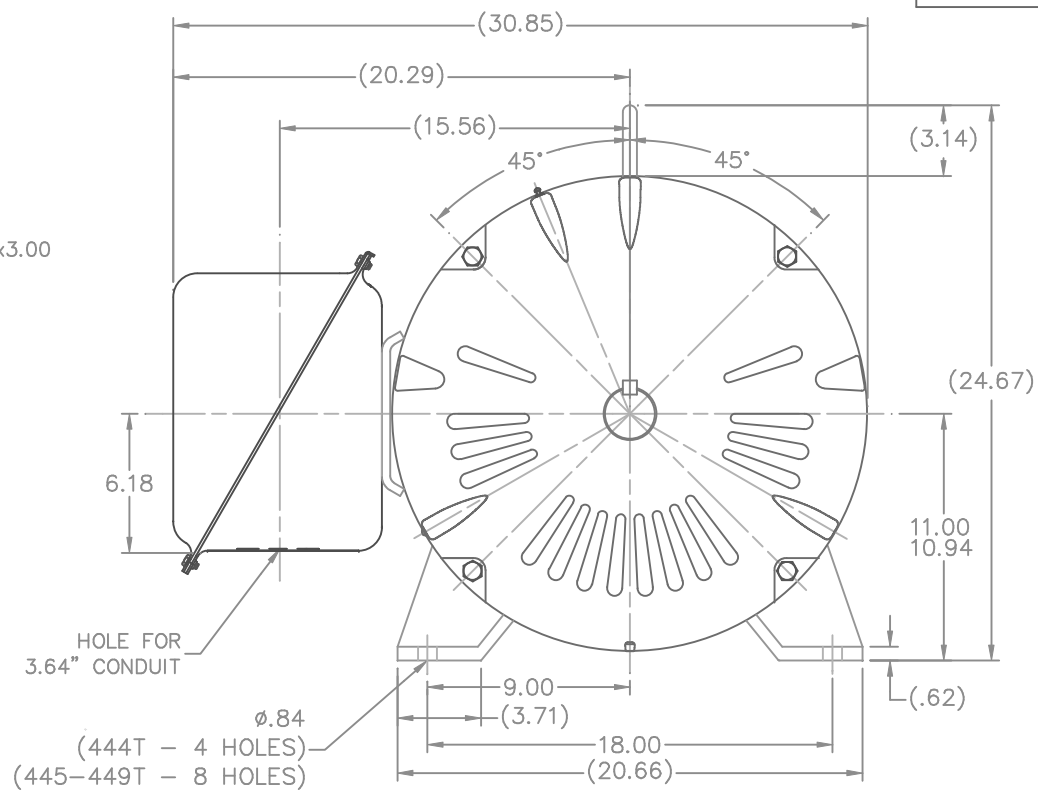
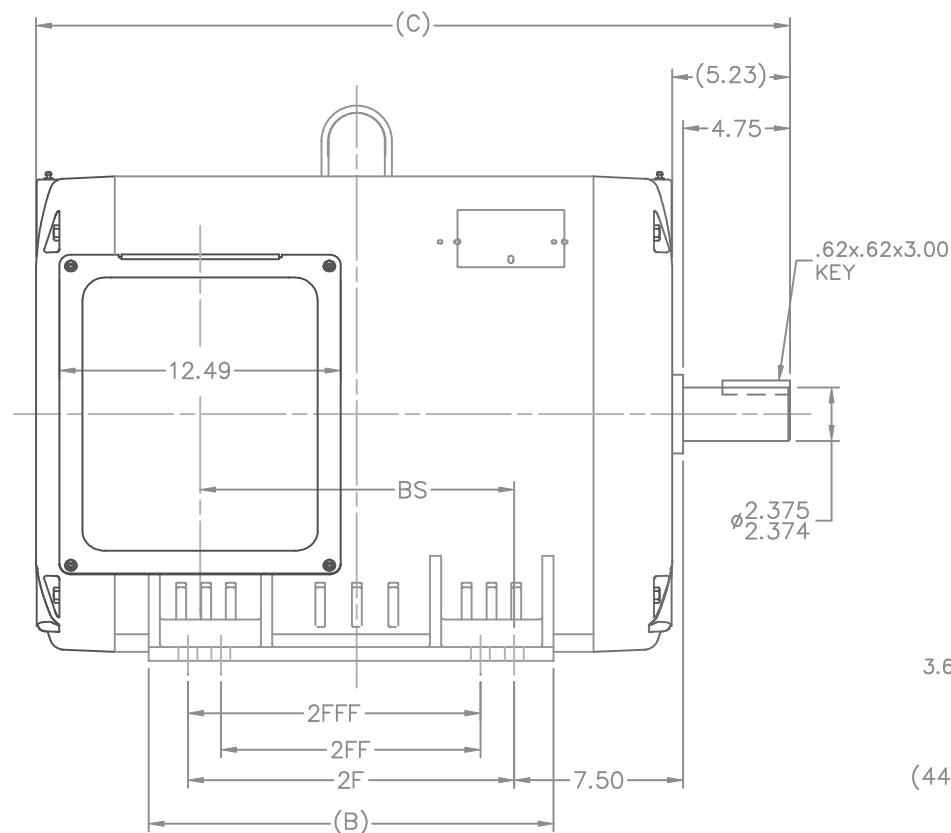
Nameplate Specifications

Output HP	300 Hp	Output KW	224.0 kW
Frequency	60 Hz	Voltage	460 V
Current	316.0 A	Speed	3575 rpm
Service Factor	1.15	Phase	3
Efficiency	95.4 %	Power Factor	93
Duty	Continuous	Insulation Class	F
Design Code	B	KVA Code	G
Frame	447TS	Enclosure	Drip Proof
Thermal Protection	No	Ambient Temperature	40 °C
Drive End Bearing Size	315	Opp Drive End Bearing Size	315
UL	Recognized	CSA	Y
CE	Y	IP Code	22
Number of Speeds	1		

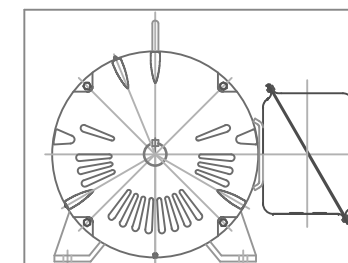
Technical Specifications

Electrical Type	Squirrel Cage Induction Run	Starting Method	Wye Start Delta Run
Poles	2	Rotation	Reversible
Resistance Main	.018 Ohms	Mounting	Rigid Base
Motor Orientation	Horizontal	Drive End Bearing	Ball
Opp Drive End Bearing	Ball	Frame Material	Rolled Steel
Shaft Type	TS	Overall Length	39.00 in
Frame Length	26.77 in	Shaft Diameter	2.375 in
Shaft Extension	4.75 in	Assembly/Box Mounting	F1 ONLY
Connection Drawing	A-EE7340-LN	Outline Drawing	XK2D1SS2-2677


This is an uncontrolled document once printed or downloaded and is subject to change without notice. Date Created:11/30/2021

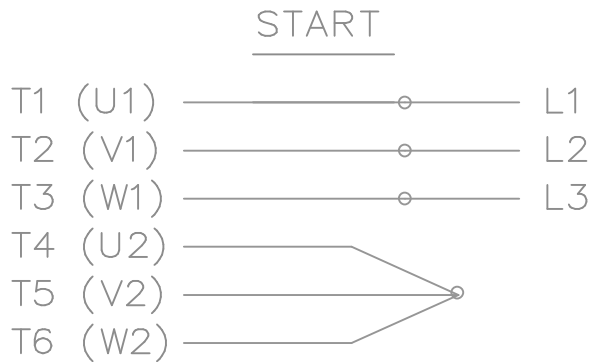


- NOTES:
 1. CONDUIT BOX CAN BE ROTATED IN 90° STEPS.
 2. NAMEPLATES TO BE READ FROM CONDUIT BOX
 SIDE OF MOTOR.

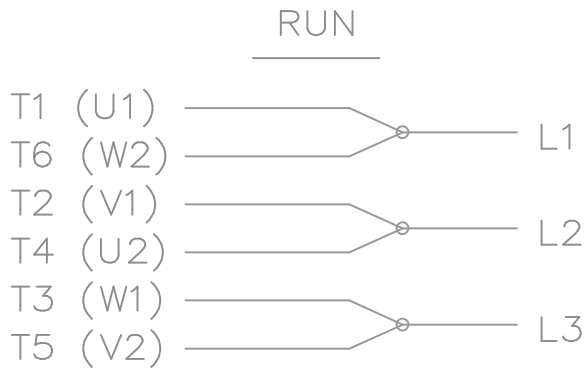
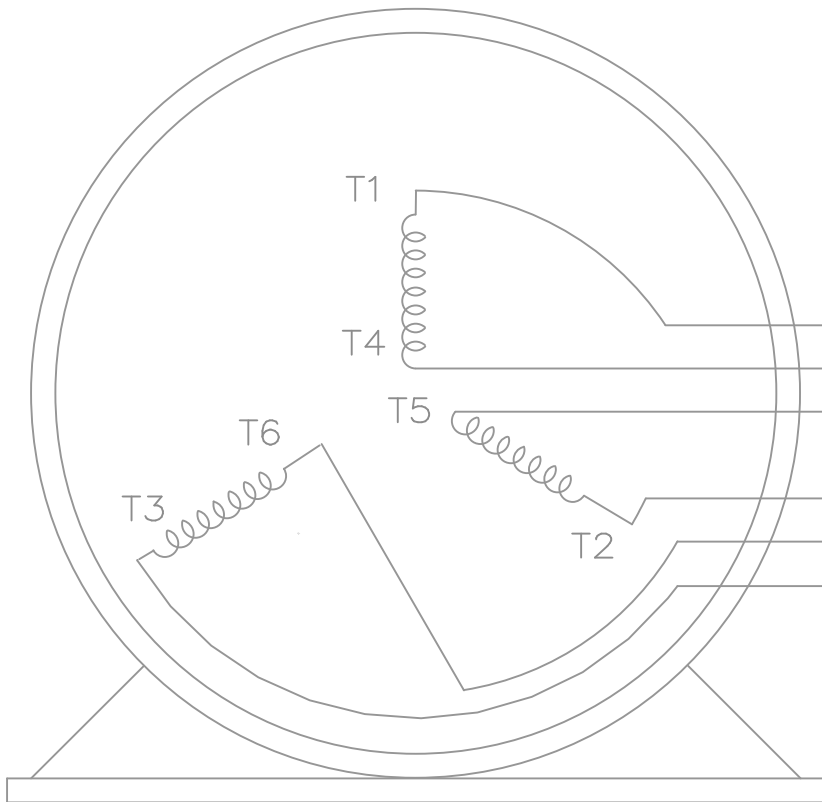


F2 VIEW

								TOLERANCES UNLESS SPECIFIED DEC. INCHES					DRAWN TJB 08-08-2001			
													CHK ML 08-23-2001			
								4 REVISED FROM 4 TO 4-8 HOLES PER CN 37556			CTO 12-17-2001		.X ±.1		APPD HNH 08-30-2001	
								3 ADDED DASHES 2677 & 3177 CN 29200-2314			CTO 03-22-03		JNH .XX ±.03		TITLE OUTLINE NEMA MOTORS	
								2 ADDED DASH 2327 CN 29200-2238			NJS 02-22-02		DRS .XXX ±.005		440TS OPD UE	
								1 NEW DRAWING - REPLACES 3XSD134FSSK-1 MU38160			TJB 08-30-01		ML .XXXX ±.0005		MAT'L	
NO.								REVISION			BY & DATE		CHK ANG ±1/2"		FINISH	
THIS DRAWING IN DESIGN AND DETAIL IS OUR PROPERTY AND MUST NOT BE USED EXCEPT IN CONNECTION WITH OUR WORK ALL RIGHTS OF DESIGN AND INVENTION ARE RESERVED THIS IS AN ELECTRONICALLY GENERATED DOCUMENT - DO NOT SCALE THIS PRINT											RFP		CAD FILE		xk2d1ss2	
											DIST BY		SIZE		DRAWING NO.	
													B		XK2D1SS2	
															REV.	
DASH	FRAME	C	B	BS	2F	2FF	2FFF									
2127	444TS	33.50	18.00	13.96	14.50											
2327	445TS	35.50	20.00	15.96	16.50	14.50	14.50								SCALE 1=5.5	
2677	447TS	39.00	23.50	19.46	20.00	16.50	16.50								REF	
3177	449TS	44.00	28.50	24.46	25.00	20.00	20.00								FMF	
															PREV	



THREE PHASE — Y START
 Δ RUN MOTOR




T1 (U1)
 T4 (U2)
 T5 (V2)
 T2 (V1)
 T6 (W2)
 T3 (W1)

T6CK
 T6BM
 T4CC
 T2DL
 T4C

NOTE:
 IEC LEAD MARKINGS ARE NOTED
 IN PARENTHESES

VIEW OF TERMINAL END

			TOLERANCES UNLESS SPECIFIED			DRAWN BLR 10-04-1999		
			DEC.	INCHES		CHK DRS 10-04-1999		
			.X	±.1		APPD TB 10-04-1999		
3	REVISED TO MATCH M.E. ORIGINAL	TAT 07-25-2005	ML	.XX	±.02	TITLE CONNECTION DIAGRAM 3Ø — WYE START DELTA RUN	SCALE 1=1	
2	REVISED DRAWING MISTAKE CN 29200-2980	ERH 05-15-2003	ML	.XXX	±.005		REF	
1	NEW DRAWING	BLR 10-09-1999		.XXXX	±.0005		FMF	
NO.	REVISION	BY & DATE	CHK	ANG	±'30"	FINISH	PREV	
THIS DRAWING IN DESIGN AND DETAIL IS OUR PROPERTY AND MUST NOT BE USED EXCEPT IN CONNECTION WITH OUR WORK ALL RIGHTS OF DESIGN AND INVENTION ARE RESERVED THIS IS AN ELECTRONICALLY GENERATED DOCUMENT — DO NOT SCALE THIS PRINT			RFP	CAD FILE ee7340_In		SIZE A	DRAWING NO. EE7340-LN	PAGE OF 3
			DIST	WA-LB-SB				



**2100 WASHINGTON ST.
GRAFTON, WI
PH. 262-277-8810**

CONN. DIAGRAM: A-EE7340-LN

OUTLINE: XK2D1SS2-2677

CATALOG #: LM13764

WINDING #: L4472005 1

MOUNTING: F1 ONLY

TYPICAL MOTOR PERFORMANCE DATA

HP	kW	SYNC. RPM	F.L. RPM	FRAME	ENCLOSURE	KVA CODE	DESIGN
300	224	3600	3575	447TS	DP	G	B

PH	Hz	VOLTS	AMPS	START TYPE	DUTY	INSL	S.F.	AMB°C
3	60	460	316	WYE START DELTA RUN	CONTINUOUS	F4	1.15	40

FULL LOAD EFF:	95.4	3/4 LOAD EFF:	95.8	1/2 LOAD EFF:	95.4	GTD. EFF		ELEC. TYPE
FULL LOAD PF:	93	3/4 LOAD PF:	93	1/2 LOAD PF:	91	94.5		SQ CAGE IND RUN

F.L. TORQUE	LOCKED ROTOR AMPS	L.R. TORQUE	B.D. TORQUE	F.L. RISE°C
441 LB-FT	2150	750 LB-FT 170 %	950 LB-FT 215 %	75

SOUND PRESSURE @ 3 FT.	SOUND POWER	ROTOR WK^2	MAX. WK^2	SAFE STALL TIME	STARTS / HOUR	APPROX. MOTOR WGT
- dBA	- dBA	0 LB-FT^2	- LB-FT^2	- SEC.	-	- LBS.

***** SUPPLEMENTAL INFORMATION *****

DE BRACKET TYPE	ODE BRACKET TYPE	MOUNT TYPE	ORIENTATION	SEVERE DUTY	HAZARDOUS LOCATION	DRIP COVER	SCREENS	PAINT
STANDARD	STANDARD	RIGID	HORIZONTAL	FALSE	NONE	FALSE	NONE	GRAY - LINCOLN

BEARINGS		GREASE	SHAFT TYPE	SPECIAL DE	SPECIAL ODE	SHAFT MATERIAL	FRAME MATERIAL
DE	ODE						
BALL	BALL	POLYREX EM	TS	NONE	NONE	1045 HOT ROLLED (C-204)	ROLLED STEEL
315	315						

THERMO-PROTECTORS				THERMISTORS	CONTROL	SPACE HEATERS
THERMOSTATS	PROTECTORS	WDG RTDs	BRG RTDs			
NONE	NOT	NONE	NONE	NONE	FALSE	NONE VOLTS

*

N

O

T

E

S

*

INVERTER TORQUE: NONE
INV. HP SPEED RANGE: NONE

ENCODER: NONE
NONE NONE
NONE NONE PPR

BRAKE: NONE NONE
NONE P/N NONE
NONE NONE
NONE FT-LB NONE V NONE Hz

Data Sheet

Date: 1/19/2018

LM13764



Data @ 460 V

Motor Load Data

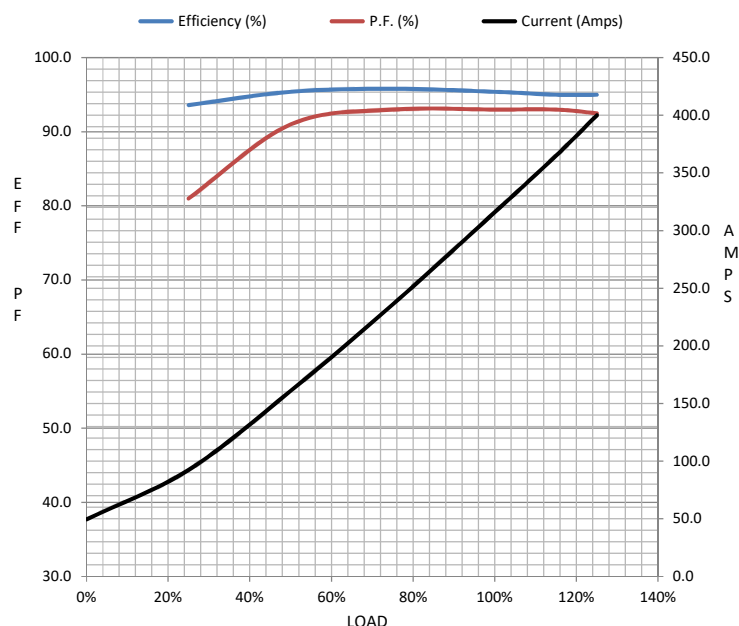
Load	0%	25%	50%	75%	100%	115%	125%	LR	
Current (Amps)	49.5	92.5	161	236	316	365	400	2,150	
Torque (ft-lb)	0.00	110	220	330	441	508	552	700	
RPM	3600	3595	3587	3580	3575	3,570	3565	0	
Efficiency (%)		93.6	95.4	95.8	95.4	95.0	95.0		
P.F. (%)	7.5	81.0	91.0	93.0	93.0	93.0	92.5	29.0	

Motor Speed Data

	LR	Pull-Up	BD	Rated	Idle
Speed (RPM)	0	1800	3440	3575	3600
Current (Amps)	2,150	1,950	1,400	316	49.5
Torque (ft-lb)	700	625	1,100	441	0.00

Information Block

HP	300.0			
Sync. RPM	3600			
Frame	447			
Enclosure	DP			
Construction	TDR			
Voltage	460 V			
Frequency	60 Hz			
Design	A			
LR Code letter	G			
Service Factor	1.15			
Temp Rise @ FL	75 °C			
Duty	CONT			
Ambient	40 °C			
Elevation	1,000 feet			
Rotor/Shaft wk²	0.00 Lb-Ft²			
Ref Wdg	L4472005 NONE			
Sound Pressure @ 1M	999 dBA			
VFD Rating	NONE			
Outline Dwg	XK2D1SS2-2677			
Conn. Diag	A-EE7340-LN			
Additional Specifications:				
0				
0				
EQUIV CKT (OHMS / PHASE)				
R1	R2	X1	X2	Xm
0.0140	0.0070	0.0960	0.0650	5.3580



Speed - Torque Curve

