

PRODUCT INFORMATION PACKET



Model No: LM13725
Catalog No: LM13725
324TSTEFC 40HP3600 230460000/360

Regal and Leeson are trademarks of Regal Rexnord Corporation or one of its affiliated companies.
©2023 Regal Rexnord Corporation, All Rights Reserved. MC017097E





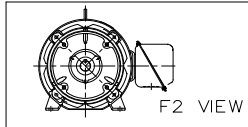
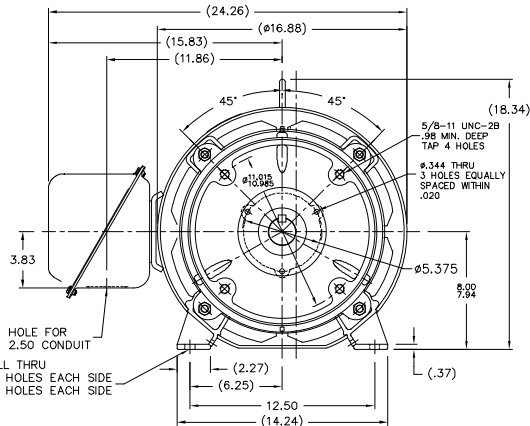
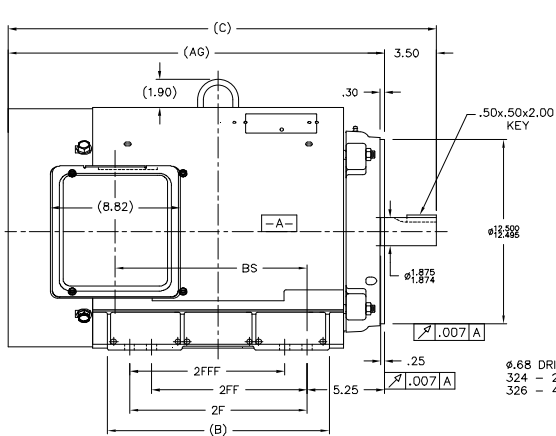
Nameplate Specifications

Phase	3	Output HP	40 & 30 Hp
Output KW	29.8 & 22.4 kW	Voltage	230/460 & 190/380 V
Speed	3555 & 2958 rpm	Service Factor	1.25 & 1.15
Frame	324TSC	Enclosure	Totally Enclosed Fan Cooled
Thermal Protection	No Protection	Efficiency	93.6 & 93 %
Ambient Temperature	40 °C	Frequency	60 & 50 Hz
Current	88/44 & 82/41 A	Power Factor	90
Duty	Continuous	Insulation Class	F
Design Code	B	KVA Code	G
Drive End Bearing Size	311	Opp Drive End Bearing Size	309
UL	Recognized	CSA	Y
CE	Y	IP Code	43
Number of Speeds	1		

Technical Specifications

Electrical Type	Squirrel Cage Induction Run	Starting Method	Wye Start Delta Run
Poles	2	Rotation	Reversible
Resistance Main	.165 Ohms	Mounting	Rigid Base
Motor Orientation	Horizontal	Drive End Bearing	Ball
Opp Drive End Bearing	Ball	Frame Material	Rolled Steel
Shaft Type	TS	Assembly/Box Mounting	F1/F2 CAPABLE
Outline Drawing	XG2F1SC2-1550	Connection Drawing	A-EE7308AA-LN

This is an uncontrolled document once printed or downloaded and is subject to change without notice. Date Created:06/22/2023

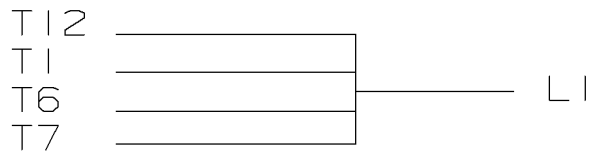


NOTES:

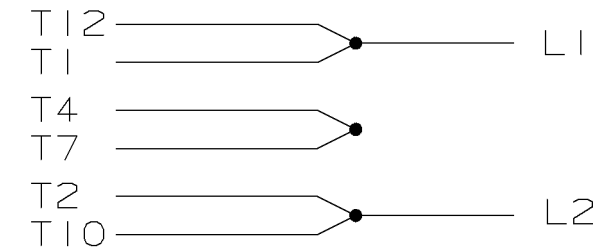
1. CONDUIT BOX CAN BE ROTATED IN 90° STEPS.
2. NAMEPLATES TO BE READ FROM CONDUIT BOX SIDE OF MOTOR.

DASH	FRAME	C	BS	B	2F	2FF	2FFF	AG
1550	324TS	27.44	11.46	13.52	10.50			23.94
1700	326TS	28.94	12.96	15.02	12.00	10.50	10.50	25.44

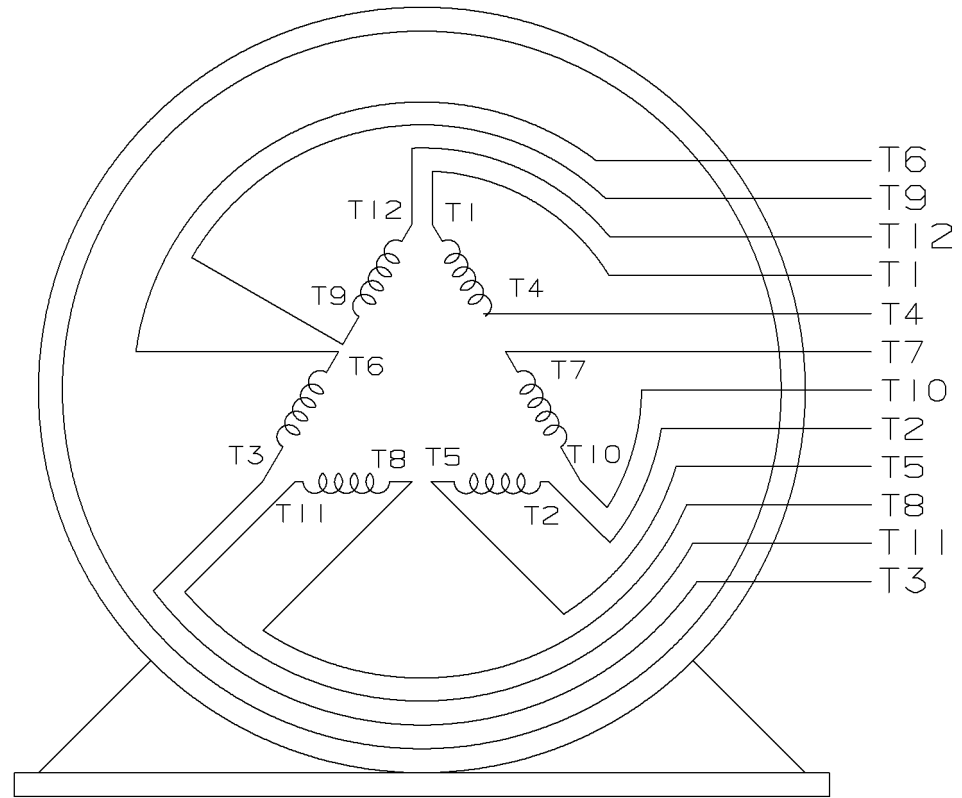
		TOLERANCES UNLESS SPECIFIED				DRAWN NJS 09-03-2002	
		DEC.	INCHES			CHK	M.L. 09-04-2002
		LX	±.1			APPD	HNN 09-05-2002
		JXX	±.03			SCALE	7=32
		JXXX	±.005			REF	
		HNN	±.0005			FRY	
		CHK	±.730"			FINSH	
		REF				CAD FILE	XG2F15C2
		DIST	BY			SIZE	DRAWING NO. PAGE OF REV.
						B	XG2F15C2 D
D	REPLACED 3C223-G4 WITH 557965-CM ; CR-0001503	SVP	04-07-2021	AS	JXXX	±.005	TITLE OUTLINE NEMA MOTORS
T	NEW DRAWING	MU43234	NJS 09-05-2002	HNN	JXXX	±.0005	320TSC FR. - TEFC - UE I
NO.	REVISION	BY	DATE	CHK	ANG	±.730"	WATL.
THIS DRAWING IN DESIGN AND DETAIL IS OUR PROPERTY AND MUST NOT BE USED EXCEPT IN CONNECTION WITH OUR WORK. ALL RIGHTS OF DESIGN AND INVENTION ARE RESERVED. THIS IS AN ELECTRONICALLY GENERATED DOCUMENT - DO NOT SCALE THIS PRINT							



LOW VOLTAGE



HIGH VOLTAGE



VIEW OF TERMINAL END

					UNLESS OTHERWISE SPECIFIED DIMENSIONS ARE IN INCHES TOL. ON XX±.02 XXX±.005 XXXX±.0005 ANGLES± 7'30"		
2	08-09-1999	RE-ISSUE, ADDED '-' TO PART NUMBER	BLR		MAX. SURFACE ROUGHNESS UNLESS OTHERWISE NOTED		DRAWN BY TRB 07-16-1999
1	06-18-1999	NEW DRAWING	TRB	FINISH		CHKD BY ML 06-18-1999	
				MATERIAL		APPD BY GK 06-18-1999	
REV	DATE	CHANGE	NAME	PART NAME 3 PHASE CONNECTION DIAGRAM 2/1 DELTA - 12 LEADS			DRWG NO A- EE7308AA-LN

PURCHASED

CADD FILE NO.

EE7308AALN

ERROR: undefined
OFFENDING COMMAND: Pscrip

STACK: