

PRODUCT INFORMATION PACKET



Model No: LM13720
Catalog No: LM13720
replaced with 449TTFCD16333 -- 449T TEFC 350HP1800 4600000000/360

Regal and Leeson are trademarks of Regal Rexnord Corporation or one of its affiliated companies.
©2023 Regal Rexnord Corporation, All Rights Reserved. MC017097E





Nameplate Specifications

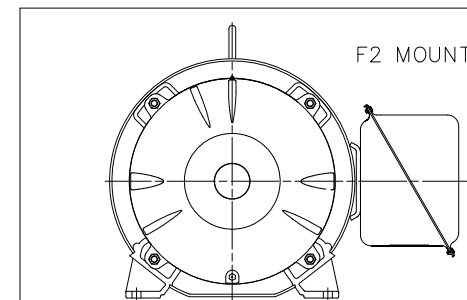
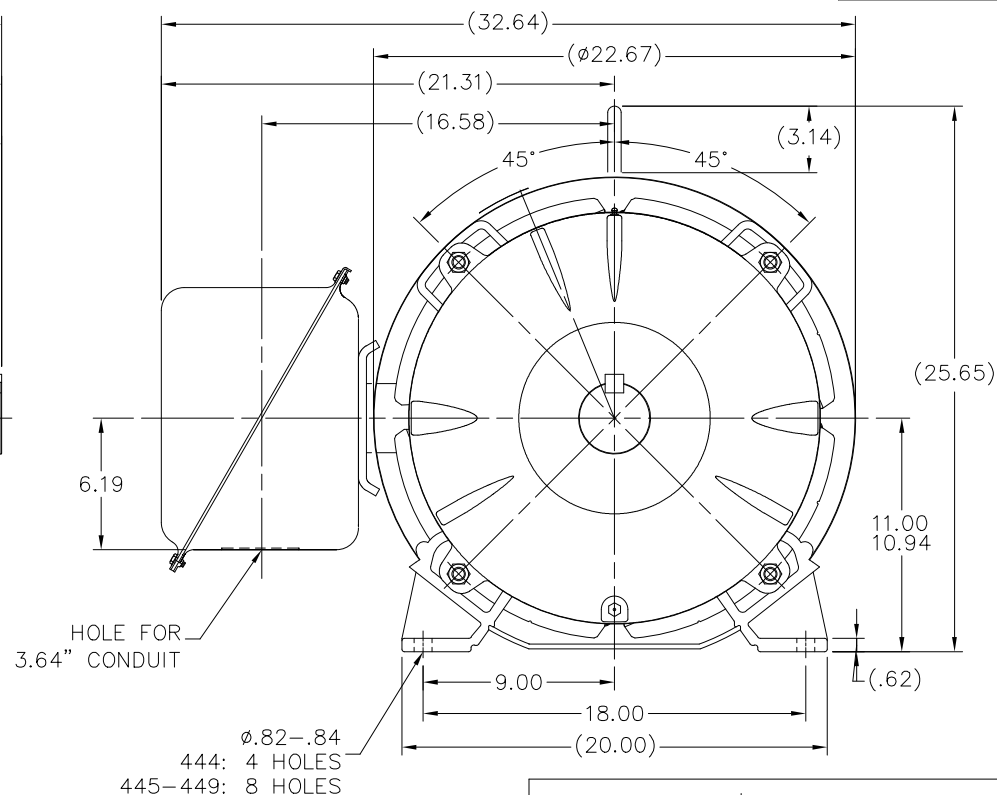
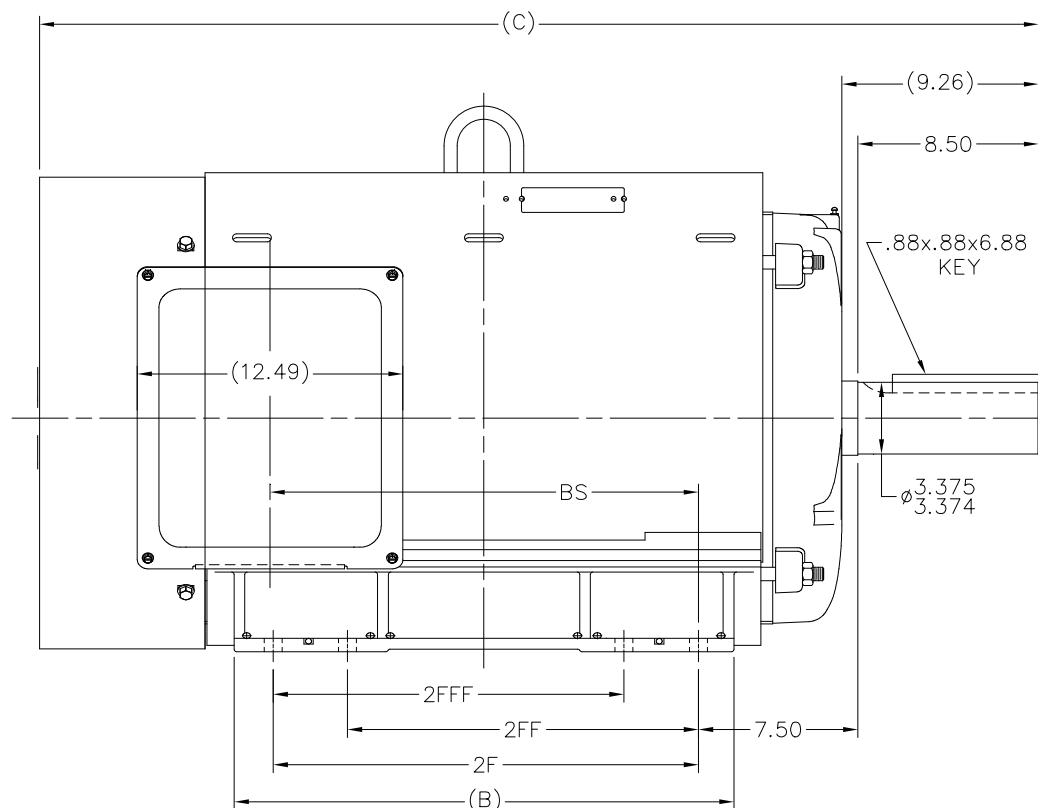
Phase	3	Output HP	350 & 300 Hp
Output KW	260.0 & 224.0 kW	Voltage	460 & 415 V
Speed	1785 & 1487 rpm	Service Factor	1.15 & 1.15
Frame	447/449T	Enclosure	Totally Enclosed Fan Cooled
Thermal Protection	No Protection	Efficiency	95.8 & 95.4 %
Ambient Temperature	40 °C	Frequency	60 & 50 Hz
Current	403 & 393 A	Power Factor	85
Duty	Continuous	Insulation Class	F
Design Code	B	KVA Code	G
Drive End Bearing Size	318	Opp Drive End Bearing Size	315
UL	Recognized	CSA	Y
CE	Y	IP Code	43
Number of Speeds	1		

Technical Specifications

Electrical Type	Squirrel Cage Induction Run	Starting Method	Wye Start Delta Run
Poles	4	Rotation	Reversible
Resistance Main	.0104 Ohms	Mounting	Rigid Base
Motor Orientation	Horizontal	Drive End Bearing	Ball
Opp Drive End Bearing	Ball	Frame Material	Rolled Steel
Shaft Type	T	Assembly/Box Mounting	F1/F2 CAPABLE
Outline Drawing	XK2F1SS1-3167	Connection Drawing	A-EE7340-LN

This is an uncontrolled document once printed or downloaded and is subject to change without notice. Date Created:06/22/2023

XK2F1SS1

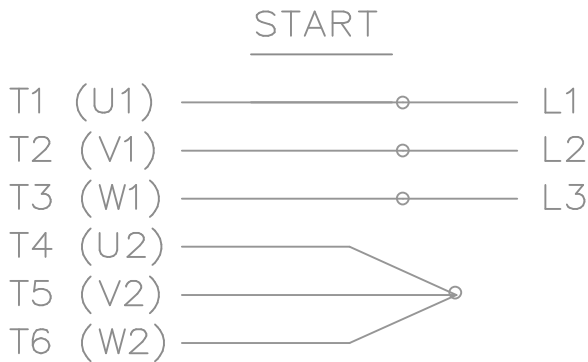


NOTES:

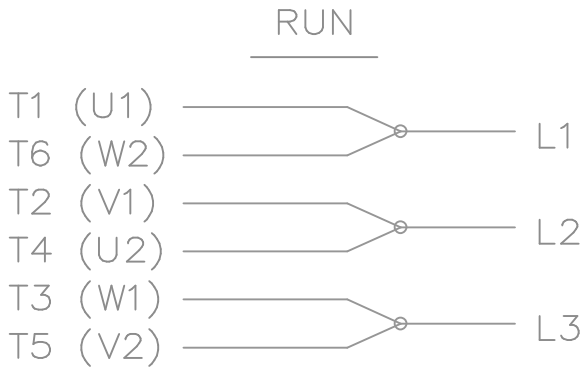
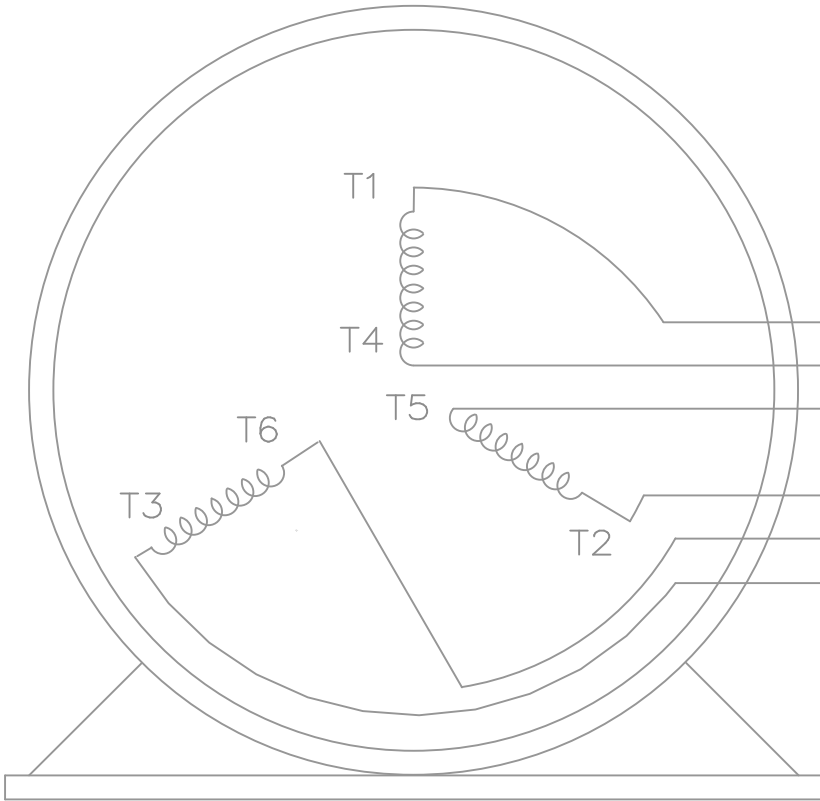
1. CONDUIT BOX CAN BE ROTATED IN 90° STEPS.
2. NAMEPLATES TO BE READ FROM CONDUIT BOX SIDE OF MOTOR.

									TOLERANCES UNLESS SPECIFIED			DRAWN MSG 09-19-2001		
									DEC.	INCHES		CHK	ML	09-21-2001
									.X	±.1		APPD	HNH	09-24-2001
2117	444T	41.58	--	18.00	14.50				.XX	±.03		TITLE OUTLINE NEMA MOTORS 440T TEFC UEI		
2317	445T	43.58	--	20.00	16.50	14.50	14.50	16.64	.XXX	±.005				
2667	447T	47.08	--	23.50	20.00	16.50	16.50	20.14	.XXXX	±.0005	MAT'L	SCALE 1=6		
3167	449T	52.08	--	28.50	25.00	20.00	20.00	25.14	ANG	±7°30'	FINISH	REF		
									RFP	CAD FILE xk2f1ss1		SIZE	DRAWING NO.	PAGE OF
									DIST	BY		B	XK2F1SS1	8

THIS DRAWING IN DESIGN AND DETAIL IS OUR PROPERTY AND MUST NOT BE USED EXCEPT IN CONNECTION WITH OUR WORK ALL RIGHTS OF DESIGN AND INVENTION ARE RESERVED THIS IS AN ELECTRONICALLY GENERATED DOCUMENT - DO NOT SCALE THIS PRINT



THREE PHASE — Y START
 Δ RUN MOTOR




T1 (U1)
 T4 (U2)
 T5 (V2)
 T2 (V1)
 T6 (W2)
 T3 (W1)

T6CK
 T6BM
 T4CC
 T2DL
 T4C

NOTE:
 IEC LEAD MARKINGS ARE NOTED
 IN PARENTHESES

VIEW OF TERMINAL END

				TOLERANCES UNLESS SPECIFIED			DRAWN BLR 10-04-1999			
				DEC.	INCHES		CHK DRS 10-04-1999			
				.X	±.1		APPD TB 10-04-1999			
3	REVISED TO MATCH M.E. ORIGINAL	TAT 07-25-2005	ML	.XX	±.02	TITLE CONNECTION DIAGRAM 3ø – WYE START DELTA RUN			SCALE 1=1	
2	REVISED DRAWING MISTAKE CN 29200-2980	ERH 05-15-2003	ML	.XXX	±.005				REF	
1	NEW DRAWING	BLR 10-09-1999		.XXXX	±.0005	MAT'L.			FMF	
NO.	REVISION	BY & DATE	CHK	ANG	±7'30"	FINISH			PREV	
THIS DRAWING IN DESIGN AND DETAIL IS OUR PROPERTY AND MUST NOT BE USED EXCEPT IN CONNECTION WITH OUR WORK ALL RIGHTS OF DESIGN AND INVENTION ARE RESERVED THIS IS AN ELECTRONICALLY GENERATED DOCUMENT – DO NOT SCALE THIS PRINT			RFP		CAD FILE ee7340_In			SIZE A	DRAWING NO. EE7340-LN	PAGE OF 3
			DIST WA-LB-SB							