

PRODUCT INFORMATION PACKET



Model No: LM13705
Catalog No: LM13705
445T TEFC 125HP1200 4600000000/360

Regal and Leeson are trademarks of Regal Rexnord Corporation or one of its affiliated companies.
©2023 Regal Rexnord Corporation, All Rights Reserved. MC017097E





Nameplate Specifications

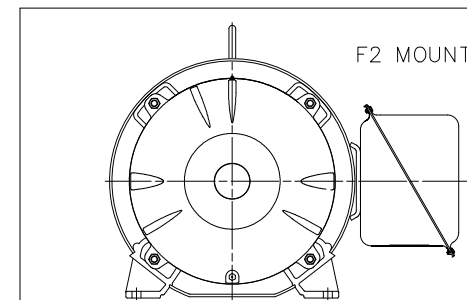
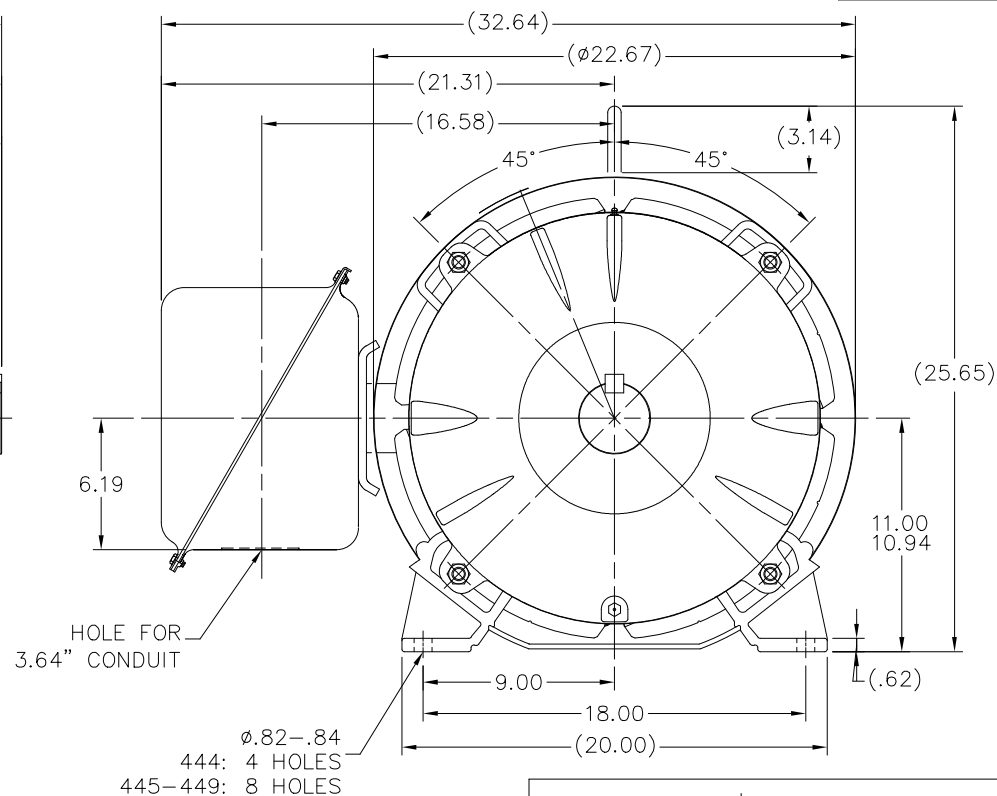
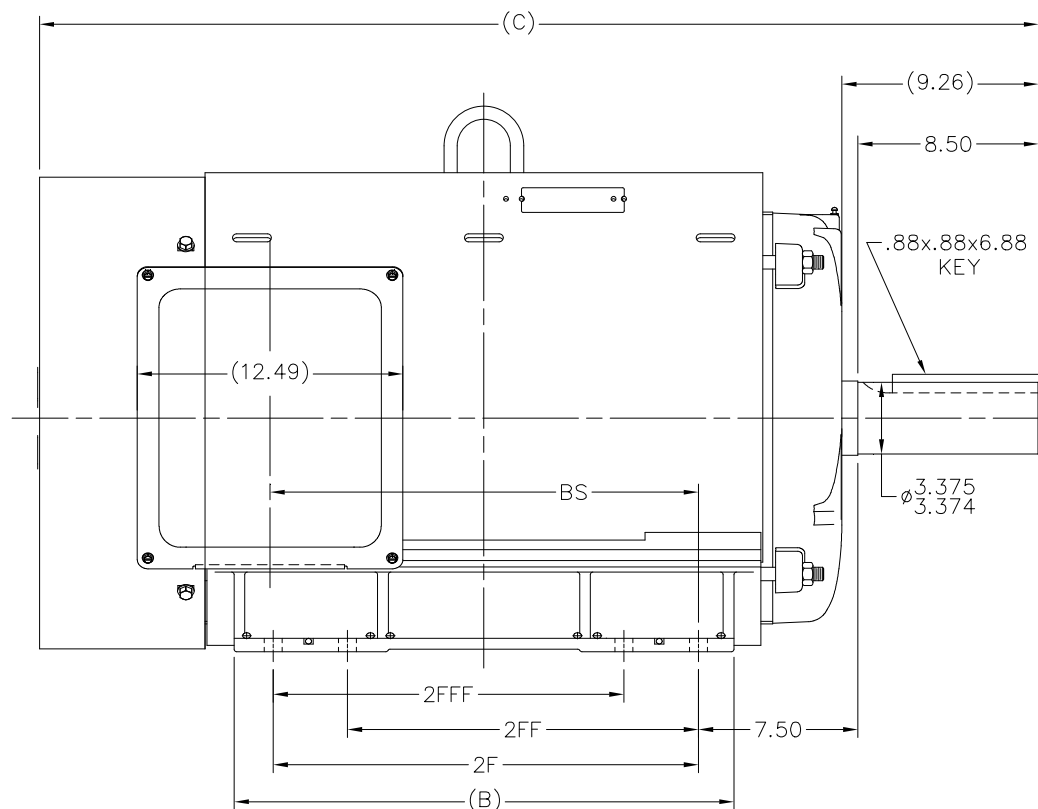
Phase	3	Output HP	125 & 100 Hp
Output KW	93.0 & 75.0 kW	Voltage	460 & 380 V
Speed	1190 & 991 rpm	Service Factor	1.15 & 1.15
Frame	445T	Enclosure	Totally Enclosed Fan Cooled
Thermal Protection	No Protection	Efficiency	95.8 & 95.4 %
Ambient Temperature	40 °C	Frequency	60 & 50 Hz
Current	161 & 156 A	Power Factor	77.3
Duty	Continuous	Insulation Class	F
Design Code	BC	KVA Code	G
Drive End Bearing Size	318	Opp Drive End Bearing Size	315
UL	Recognized	CSA	Y
CE	Y	IP Code	43
Number of Speeds	1		

Technical Specifications

Electrical Type	Squirrel Cage Induction Run	Starting Method	Wye Start Delta Run
Poles	6	Rotation	Reversible
Resistance Main	.035 Ohms	Mounting	Rigid Base
Motor Orientation	Horizontal	Drive End Bearing	Ball
Opp Drive End Bearing	Ball	Frame Material	Rolled Steel
Shaft Type	T	Assembly/Box Mounting	F1 ONLY
Outline Drawing	XK2F1SS1-2317	Connection Drawing	A-EE7340-LN

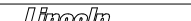
This is an uncontrolled document once printed or downloaded and is subject to change without notice. Date Created:06/23/2023

XK2F1SS1

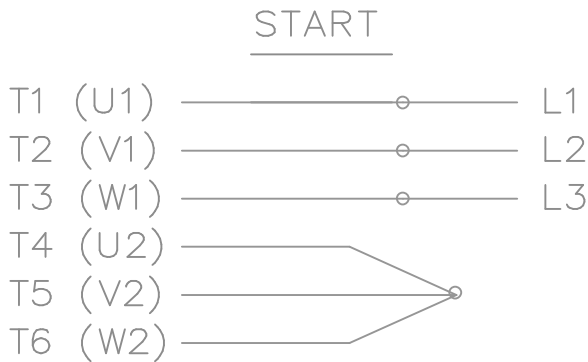


NOTES:

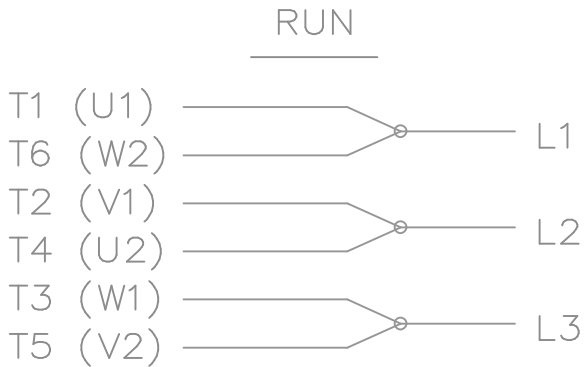
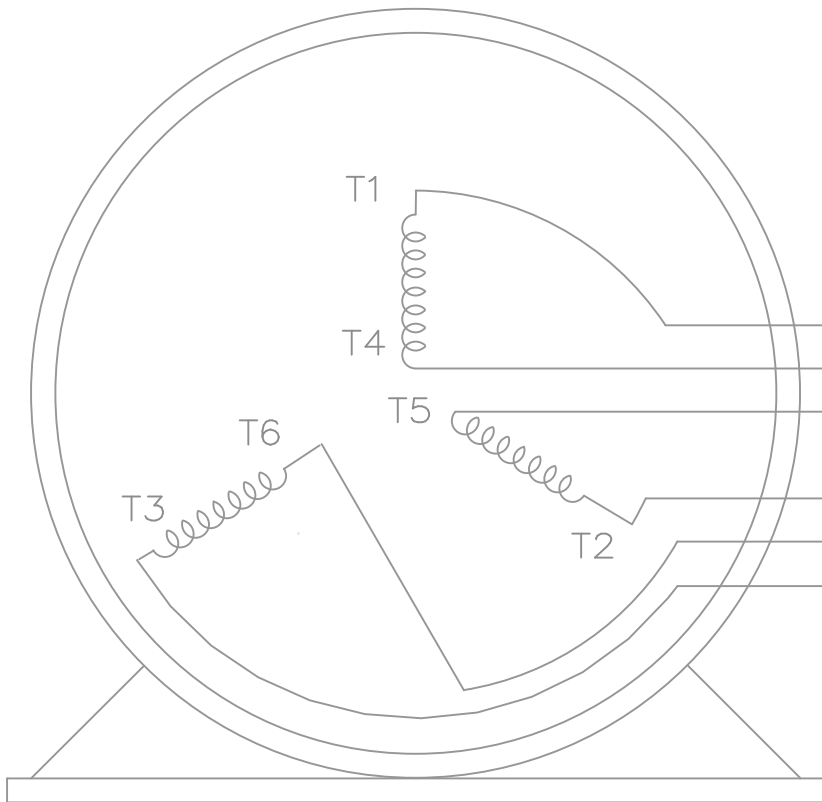
1. CONDUIT BOX CAN BE ROTATED IN 90° STEPS.
2. NAMEPLATES TO BE READ FROM CONDUIT BOX SIDE OF MOTOR.

											TOLERANCES UNLESS SPECIFIED				DRAWN MSG 09-19-2001			
											DEC. INCHES				CHK ML 09-21-2001			
											.X ±.1				APPD HNH 09-24-2001			
											.XX ±.03		TITLE OUTLINE NEMA MOTORS 440T TEFC UEI		SCALE 1=6			
											.XXX ±.005				REF			
											.XXXX ±.0005		MAT'L		FMF			
											ANG ±7°30"		FINISH		PREV			
									8		Change from 3C223-K4 to 557963 fan guard		MK 11-10-2021		VJR .XXXX		CAD FILE xk2f1ss1	
									NO.		REVISION		BY & DATE		CHK ANG		SIZE B	
											THIS DRAWING IN DESIGN AND DETAIL IS OUR PROPERTY AND MUST NOT BE USED EXCEPT IN CONNECTION WITH OUR WORK. ALL RIGHTS OF DESIGN AND INVENTION ARE RESERVED.		RFP		DIST BY		DRAWING NO. PAGE OF REV.	
											THIS IS AN ELECTRONICALLY GENERATED DOCUMENT - NO NOT SCALE THIS DRAWING				XK2F1SS1		8	

THIS DRAWING IN DESIGN AND DETAIL IS OUR PROPERTY AND MUST NOT BE USED EXCEPT IN CONNECTION WITH OUR WORK ALL RIGHTS OF DESIGN AND INVENTION ARE RESERVED THIS IS AN ELECTRONICALLY GENERATED DOCUMENT - DO NOT SCALE THIS PRINT



THREE PHASE — Y START
 Δ RUN MOTOR




T1 (U1)
 T4 (U2)
 T5 (V2)
 T2 (V1)
 T6 (W2)
 T3 (W1)

T6CK
 T6BM
 T4CC
 T2DL
 T4C

NOTE:
 IEC LEAD MARKINGS ARE NOTED
 IN PARENTHESES

VIEW OF TERMINAL END

				TOLERANCES UNLESS SPECIFIED			DRAWN BLR 10-04-1999				
				DEC.	INCHES		CHK DRS 10-04-1999				
				.X	±.1		APPD TB 10-04-1999				
3	REVISED TO MATCH M.E. ORIGINAL	TAT 07-25-2005	ML	.XX	±.02	TITLE CONNECTION DIAGRAM 3ø – WYE START DELTA RUN	SCALE 1=1				
2	REVISED DRAWING MISTAKE CN 29200-2980	ERH 05-15-2003	ML	.XXX	±.005		REF				
1	NEW DRAWING	BLR 10-09-1999		.XXXX	±.0005		FMF				
NO.	REVISION	BY & DATE	CHK	ANG	±7'30"	FINISH			PREV		
THIS DRAWING IN DESIGN AND DETAIL IS OUR PROPERTY AND MUST NOT BE USED EXCEPT IN CONNECTION WITH OUR WORK ALL RIGHTS OF DESIGN AND INVENTION ARE RESERVED THIS IS AN ELECTRONICALLY GENERATED DOCUMENT – DO NOT SCALE THIS PRINT			RFP		CAD FILE ee7340_In			SIZE	DRAWING NO.	PAGE OF	REV.
			DIST WA-LB-SB					A	EE7340-LN		3