

# PRODUCT INFORMATION PACKET



Model No: LM13707  
Catalog No: LM13707

General Purpose Motor, 150 & 150 HP, 3 Ph, 60 & 50 Hz, 460 & 415 V, 1800 & 1500 RPM, 445T Frame,  
TEFC



Regal and Leeson are trademarks of Regal Rexnord Corporation or one of its affiliated companies.  
©2023 Regal Rexnord Corporation, All Rights Reserved. MC017097E





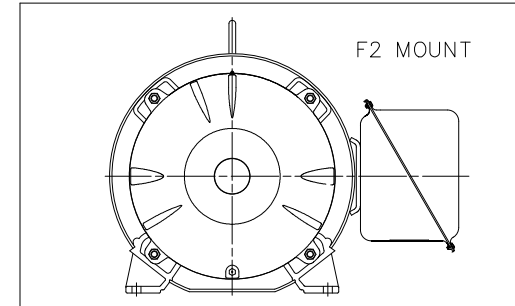
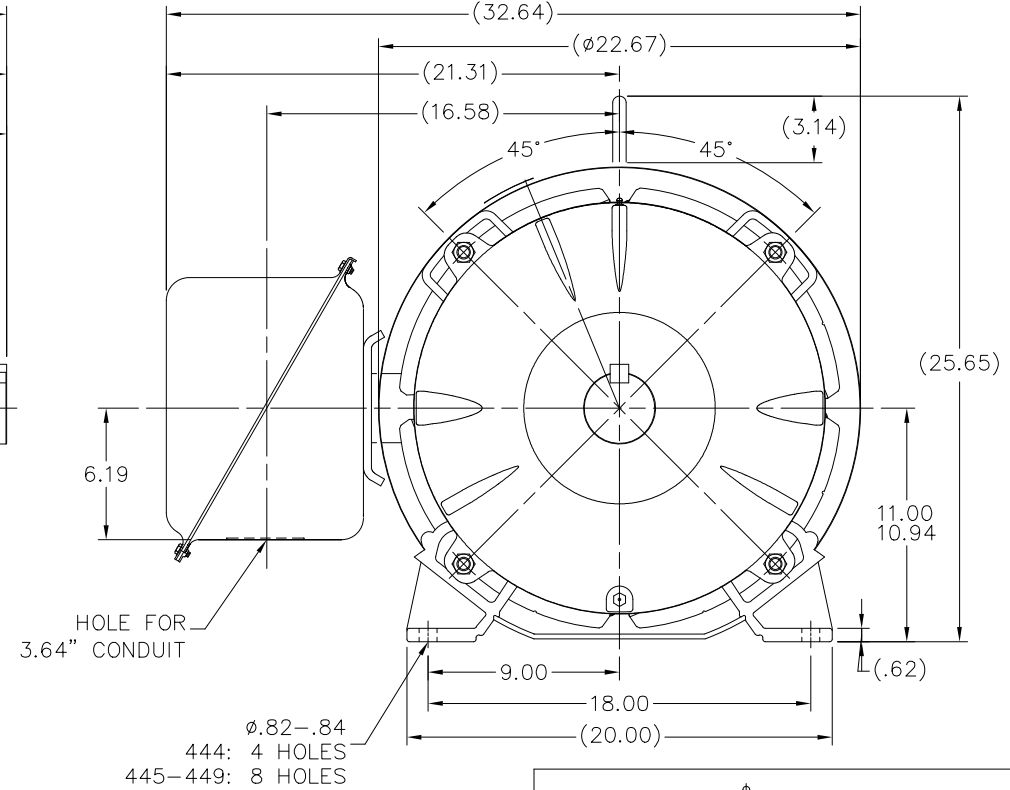
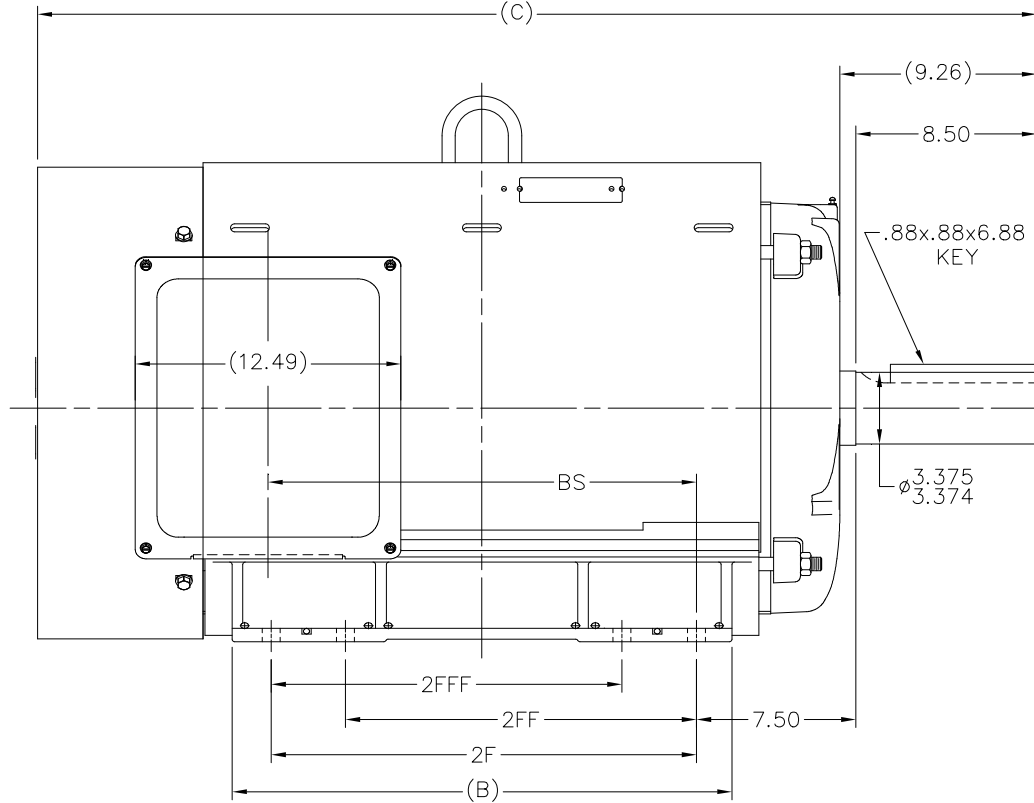
## Nameplate Specifications

Phase	3	Output HP	150 & 150 Hp
Output KW	111.9 & 111.9 kW	Voltage	460 & 415 V
Speed	1785 & 1485 rpm	Service Factor	1.15 & 1.15
Frame	445T	Enclosure	Totally Enclosed Fan Cooled
Thermal Protection	No Protection	Efficiency	96.2 & 95.4 %
Ambient Temperature	40 °C	Frequency	60 & 50 Hz
Current	168 & 189 A	Power Factor	87
Duty	Continuous	Insulation Class	F
Design Code	BC	KVA Code	G
Drive End Bearing Size	318	Opp Drive End Bearing Size	315
UL	Recognized	CSA	Y
CE	Y	IP Code	43
Number of Speeds	1		

## Technical Specifications

Electrical Type	Squirrel Cage Induction Run	Starting Method	Wye Start Delta Run
Poles	4	Rotation	Reversible
Resistance Main	.026 Ohms	Mounting	Rigid Base
Motor Orientation	Horizontal	Drive End Bearing	Ball
Opp Drive End Bearing	Ball	Frame Material	Rolled Steel
Shaft Type	T	Overall Length	43.58 in
Frame Length	23.17 in	Shaft Diameter	3.375 in
Shaft Extension	8.5 in	Assembly/Box Mounting	F1/F2 CAPABLE
Outline Drawing	XK2F1SS1-2317	Connection Drawing	A-EE7340-LN

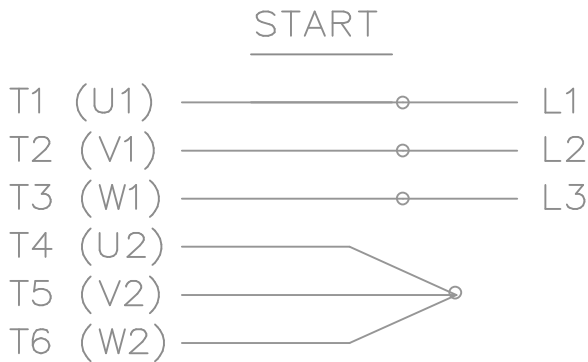
XK2F1SS1



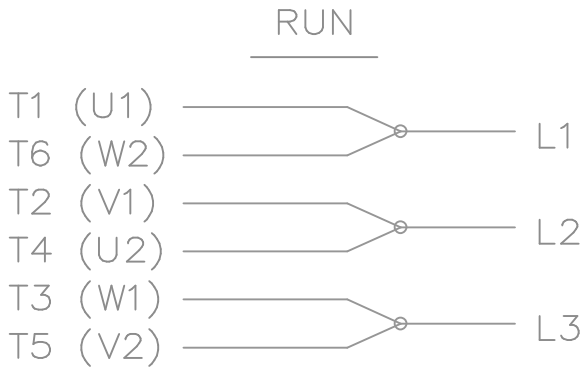
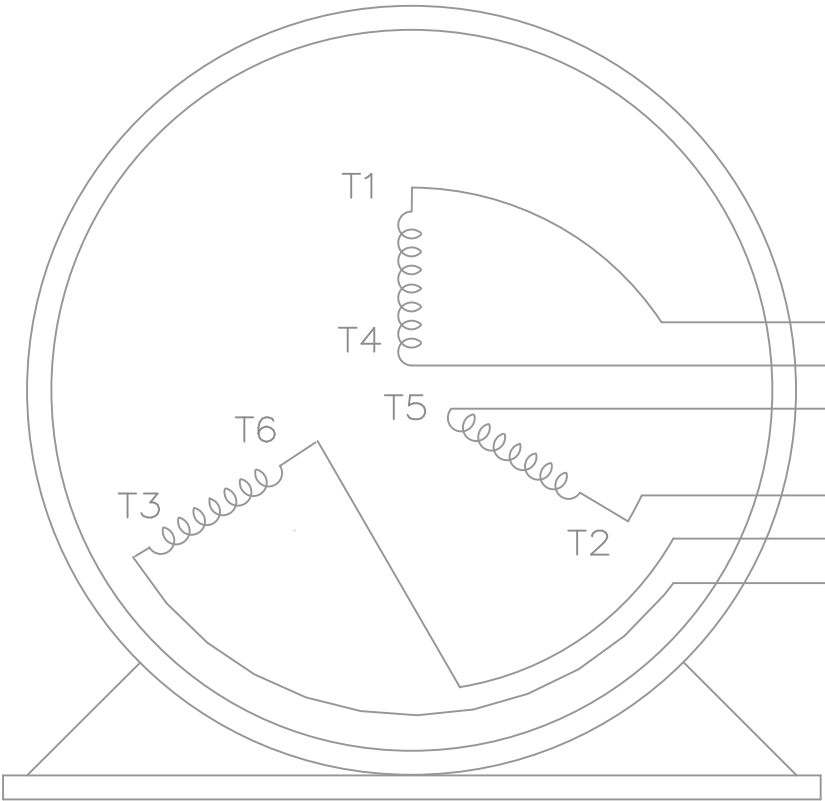
- NOTES:  
 1. CONDUIT BOX CAN BE ROTATED IN 90° STEPS.  
 2. NAMEPLATES TO BE READ FROM CONDUIT BOX SIDE OF MOTOR.

									TOLERANCES UNLESS SPECIFIED			DRAWN MSG 09-19-2001		
									DEC.	INCHES		CHK	ML	09-21-2001
									.X	±.1		APPD	HNH	09-24-2001
2117	444T	41.58	--	18.00	14.50				.XX	±.03	TITLE OUTLINE NEMA MOTORS 440T TEFC UEI	SCALE 1=6		
2317	445T	43.58	--	20.00	16.50	14.50	14.50	16.64	.XXX	±.005		REF		
2667	447T	47.08	--	23.50	20.00	16.50	16.50	20.14	.XXXX	±.0005		FMF		
3167	449T	52.08	--	28.50	25.00	20.00	20.00	25.14	ANG	±7°30'	FINISH	PREV		
									RFP	CAD FILE xk2f1ss1			SIZE	DRAWING NO. PAGE OF REV.
									DIST	BY			B	XK2F1SS1 8

THIS DRAWING IN DESIGN AND DETAIL IS OUR PROPERTY AND MUST NOT BE USED EXCEPT IN CONNECTION WITH OUR WORK ALL RIGHTS OF DESIGN AND INVENTION ARE RESERVED THIS IS AN ELECTRONICALLY GENERATED DOCUMENT - DO NOT SCALE THIS PRINT



THREE PHASE — Y START  
 Δ RUN MOTOR




T1 (U1)  
 T4 (U2)  
 T5 (V2)  
 T2 (V1)  
 T6 (W2)  
 T3 (W1)

T6CK  
 T6BM  
 T4CC  
 T2DL  
 T4C

NOTE:  
 IEC LEAD MARKINGS ARE NOTED  
 IN PARENTHESES

VIEW OF TERMINAL END

				TOLERANCES UNLESS SPECIFIED			DRAWN BLR 10-04-1999			
				DEC.	INCHES		CHK DRS 10-04-1999			
				.X	±.1		APPD TB 10-04-1999			
3	REVISED TO MATCH M.E. ORIGINAL	TAT 07-25-2005	ML	.XX	±.02	TITLE CONNECTION DIAGRAM 3ø – WYE START DELTA RUN	SCALE 1=1			
2	REVISED DRAWING MISTAKE CN 29200-2980	ERH 05-15-2003	ML	.XXX	±.005		REF			
1	NEW DRAWING	BLR 10-09-1999		.XXXX	±.0005		FMF			
NO.	REVISION	BY & DATE	CHK	ANG	±7'30"	FINISH			PREV	
THIS DRAWING IN DESIGN AND DETAIL IS OUR PROPERTY AND MUST NOT BE USED EXCEPT IN CONNECTION WITH OUR WORK ALL RIGHTS OF DESIGN AND INVENTION ARE RESERVED THIS IS AN ELECTRONICALLY GENERATED DOCUMENT – DO NOT SCALE THIS PRINT			RFP		CAD FILE ee7340_In		SIZE	DRAWING NO.	PAGE OF	REV.
			DIST WA-LB-SB				A	EE7340-LN		3



## CERTIFICATION DATA SHEET

2100 WASHINGTON ST.  
GRAFTON, WI  
PH. 262-277-8810

CONN. DIAGRAM: A-EE7340-LN

CATALOG #: LM13707

OUTLINE: XK2F1SS1-2317

WINDING #: L4454041 1

MOUNTING: F1/F2 CAPABLE

## TYPICAL MOTOR PERFORMANCE DATA

HP	kW	SYNC. RPM	F.L. RPM	FRAME	ENCLOSURE	KVA CODE	DESIGN
150&150	112&112	1800	1785&1485	445T	TEFC	G	BC

PH	Hz	VOLTS	AMPS	START TYPE	DUTY	INSL	S.F.	AMB°C
3	60/50	460&415	168&189	WYE START DELTA RUN	CONTINUOUS	F1	1.15/1.15	40

FULL LOAD EFF:	96,2&95,4	3/4 LOAD EFF:	96,2	1/2 LOAD EFF:	95,4	GTD. EFF	ELEC. TYPE
FULL LOAD PF:	87&86,5	3/4 LOAD PF:	85	1/2 LOAD PF:	79	95,4	SQ CAGE IND RUN

F.L. TORQUE	LOCKED ROTOR AMPS	L.R. TORQUE	B.D. TORQUE	F.L. RISE°C
441 LB-FT	1085	935 LB-FT 212 %	1040 LB-FT 236 %	55

SOUND PRESSURE @ 3 FT.	SOUND POWER	ROTOR WK^2	MAX. WK^2	SAFE STALL TIME	STARTS / HOUR	APPROX. MOTOR WGT
0 dBA	10 dBA	0 LB-FT^2	0 LB-FT^2	0 SEC.	0	- LBS.

## \*\*\* SUPPLEMENTAL INFORMATION \*\*\*

DE BRACKET TYPE	ODE BRACKET TYPE	MOUNT TYPE	ORIENTATION	SEVERE DUTY	HAZARDOUS LOCATION	DRIP COVER	SCREENS	PAINT
STANDARD	STANDARD	RIGID	HORIZONTAL	FALSE	NONE	FALSE	NONE	GRAY - LINCOLN

BEARINGS		GREASE	SHAFT TYPE	SPECIAL DE	SPECIAL ODE	SHAFT MATERIAL	FRAME MATERIAL
DE	ODE						
BALL	BALL						
318	315	POLYREX EM	T	NONE	NONE	1045 HOT ROLLED (C-204)	ROLLED STEEL

THERMO-PROTECTORS				THERMISTORS	CONTROL	SPACE HEATERS
THERMOSTATS	PROTECTORS	WDG RTDs	BRG RTDs			
NONE	NOT	NONE	NONE	NONE	FALSE	NONE VOLTS

\*  
  
N  
  
O  
  
T  
  
E  
  
S  
  
\*

INVERTER TORQUE: NONE  
INV. HP SPEED RANGE: NONE

ENCODER: NONE  
NONE NONE  
NONE NONE PPR

BRAKE: NONE NONE  
NONE P/N NONE  
NONE NONE  
FT-LB V NONE Hz

## Data Sheet

Date: 1/29/2018

LM13707



Data @ 460 V

## Motor Load Data

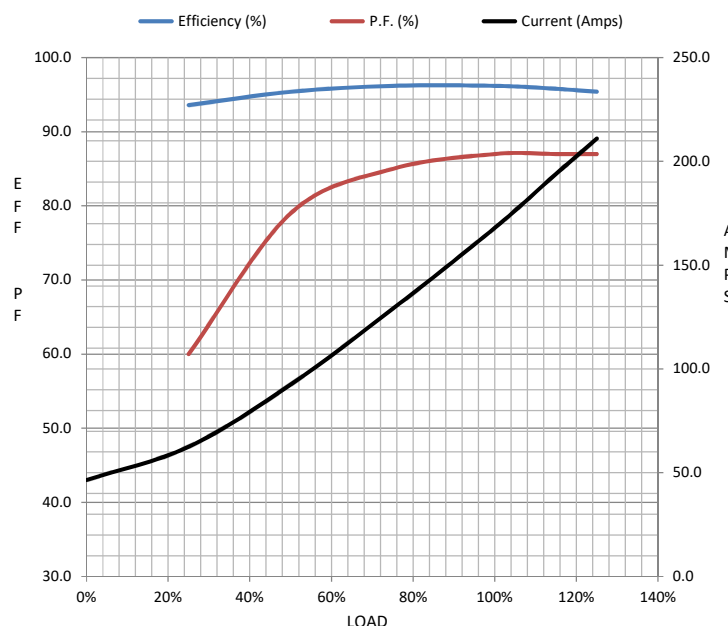
Load	0%	25%	50%	75%	100%	115%	125%	LR	
Current (Amps)	46.5	62.5	92.5	129	168	194	211	1,085	
Torque (ft-lb)	0.00	110	220	330	441	508	553	935	
RPM	1800	1797	1793	1790	1785	1,784	1782	0	
Efficiency (%)		93.6	95.4	96.2	96.2	95.8	95.4		
P.F. (%)	4.5	60.0	79.0	85.0	87.0	87.0	87.0	33.5	

## Motor Speed Data

	LR	Pull-Up	BD	Rated	Idle
Speed (RPM)	0	900	1725	1785	1800
Current (Amps)	1,085	977	575	168	46.5
Torque (ft-lb)	935	888	1,040	441	0.00

## Information Block

HP	150.0			
Sync. RPM	1800			
Frame	445			
Enclosure	TEFC			
Construction	TFR			
Voltage	460#415 V			
Frequency	60 Hz			
Design	A			
LR Code letter	G			
Service Factor	1.15			
Temp Rise @ FL	55 °C			
Duty	CONT			
Ambient	40 °C			
Elevation	1,000 feet			
Rotor/Shaft wk²	0.00 Lb-Ft²			
Ref Wdg	L4454041 NONE			
Sound Pressure @ 1M	999 dBA			
VFD Rating	NONE			
Outline Dwg	XK2F1SS1-2317			
Conn. Diag	A-EE7340-LN			
Additional Specifications:				
0				
0				
EQUIV CKT (OHMS / PHASE)				
R1	R2	X1	X2	Xm
0.0210	0.0130	0.1630	0.2150	5.6700



## Speed - Torque Curve

