

PRODUCT INFORMATION PACKET



Model No: LM13699
Catalog No: LM13699
General Purpose Motor, 40 & 30 HP, 3 Ph, 60 & 50 Hz, 230/460 & 190/380 V, 1800 & 1500 RPM,
324T Frame, TEFC



Regal and Leeson are trademarks of Regal Rexnord Corporation or one of its affiliated companies.
©2023 Regal Rexnord Corporation, All Rights Reserved. MC017097E



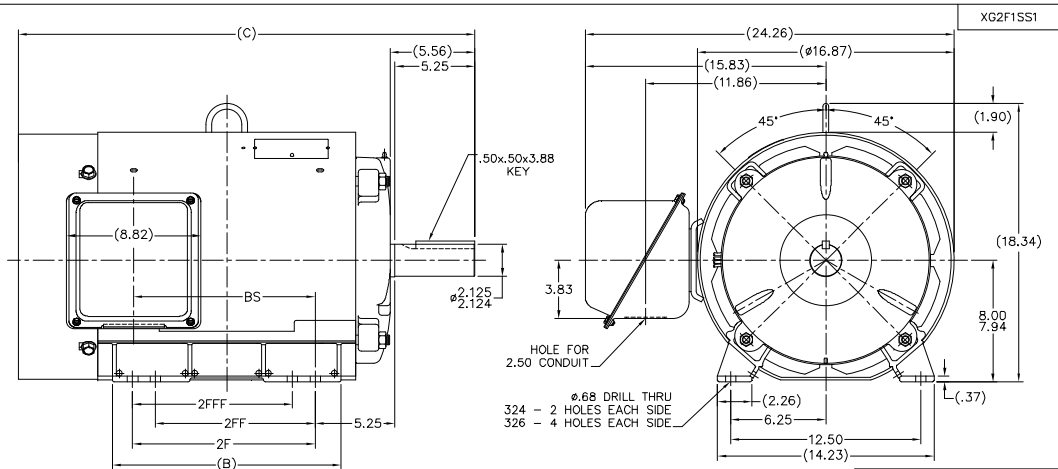


Nameplate Specifications

Phase	3	Output HP	40 & 30 Hp
Output KW	30.0 & 22.4 kW	Voltage	230/460 & 190/380 V
Speed	1780 & 1483 rpm	Service Factor	1.25 & 1.15
Frame	324T	Enclosure	Totally Enclosed Fan Cooled
Thermal Protection	No Protection	Efficiency	94.1 & 93.6 %
Ambient Temperature	40 °C	Frequency	60 & 50 Hz
Current	101/50.5 & 90/45 A	Power Factor	79.5
Duty	Continuous	Insulation Class	F
Design Code	B	KVA Code	F
Drive End Bearing Size	6311	Opp Drive End Bearing Size	6309
UL	Recognized	CSA	Y
CE	Y	IP Code	43
Number of Speeds	1		

Technical Specifications


Electrical Type	Squirrel Cage Induction Run	Starting Method	Wye Start Delta Run
Poles	4	Rotation	Reversible
Resistance Main	.118 Ohms	Mounting	Rigid Base
Motor Orientation	Horizontal	Drive End Bearing	Ball
Opp Drive End Bearing	Ball	Frame Material	Rolled Steel
Shaft Type	T	Overall Length	28.50 in
Frame Length	15.50 in	Shaft Diameter	2.125 in
Shaft Extension	5.25 in	Assembly/Box Mounting	F1/F2 CAPABLE
Connection Drawing	A-EE7308AA-LN	Outline Drawing	XG2F1SS1-1550



NOTES:

1. CONDUIT BOX CAN BE ROTATED IN 90° STEPS.
2. NAMEPLATES TO BE READ FROM CONDUIT BOX SIDE OF MOTOR.

DASH	FRAME	C	BS	B	2F	2FF	2FFF
1550	324T	28.50	10.62	13.52	10.50		
1700	326T	30.00	12.12	15.02	12.00	10.50	10.50

		TOLERANCES UNLESS SPECIFIED						DRAWN MSG 09-17-2001	
		DEC.	INCHES					CHK MK 09-17-2001	
		X	0.1					APPD HNH 08-17-2001	
		JXX	0.03			TITLE OUTLINE NEMA MOTORS		SCALE 225=1	
		JXXX	0.005			320T FR. — TEFC — UE		REF	
		JXXXX	0.0005			MATH.		PMF	
		JXXXX	0.0005			FINISH		PREV	
		JXXXX	0.0005			CAD FILE xg21fss1		REV.	
		JXXXX	0.0005					SIZE	
		JXXXX	0.0005					DRAWING NO. PAGE OF	
		JXXXX	0.0005					XG2F1SS1	
		JXXXX	0.0005					REV.	
		JXXXX	0.0005						
		JXXXX	0.0005						
		JXXXX	0.0005						
		JXXXX	0.0005						
		JXXXX	0.0005						
		JXXXX	0.0005						
		JXXXX	0.0005						
		JXXXX	0.0005						
		JXXXX	0.0005						
		JXXXX	0.0005						
		JXXXX	0.0005						
		JXXXX	0.0005						
		JXXXX	0.0005						
		JXXXX	0.0005						
		JXXXX	0.0005						
		JXXXX	0.0005						
		JXXXX	0.0005						
		JXXXX	0.0005						
		JXXXX	0.0005						
		JXXXX	0.0005						
		JXXXX	0.0005						
		JXXXX	0.0005						
		JXXXX	0.0005						
		JXXXX	0.0005						
		JXXXX	0.0005						
		JXXXX	0.0005						
		JXXXX	0.0005						
		JXXXX	0.0005						
		JXXXX	0.0005						
		JXXXX	0.0005						
		JXXXX	0.0005						
		JXXXX	0.0005						
		JXXXX	0.0005						
		JXXXX	0.0005						
		JXXXX	0.0005						
		JXXXX	0.0005						
		JXXXX	0.0005						
		JXXXX	0.0005						
		JXXXX	0.0005						
		JXXXX	0.0005						
		JXXXX	0.0005						
		JXXXX	0.0005						
		JXXXX	0.0005						
		JXXXX	0.0005						
		JXXXX	0.0005						
		JXXXX	0.0005						
		JXXXX	0.0005						
		JXXXX	0.0005						
		JXXXX	0.0005						
		JXXXX	0.0005						
		JXXXX	0.0005						
		JXXXX	0.0005						
		JXXXX	0.0005						
		JXXXX	0.0005						
		JXXXX	0.0005						
		JXXXX	0.0005						
		JXXXX	0.0005						
		JXXXX	0.0005						
		JXXXX	0.0005						
		JXXXX	0.0005						
		JXXXX	0.0005						
		JXXXX	0.0005						
		JXXXX	0.0005						
		JXXXX	0.0005						
		JXXXX	0.0005						
		JXXXX	0.0005						
		JXXXX	0.0005						
		JXXXX	0.0005						
		JXXXX	0.0005						
		JXXXX	0.0005						
		JXXXX	0.0005						
		JXXXX	0.0005						
		JXXXX	0.0005						
		JXXXX	0.0005						
		JXXXX	0.0005						
		JXXXX	0.0005						
		JXXXX	0.0005						
		JXXXX	0.0005						
		JXXXX	0.0005						
		JXXXX	0.0005						
		JXXXX	0.0005						
		JXXXX	0.0005						
		JXXXX	0.0005						
		JXXXX	0.0005						
		JXXXX	0.0005						
		JXXXX	0.0005						
		JXXXX	0.0005						

T12 _____
 T1 _____
 T6 _____ L1
 T7 _____

T2 _____
 T4 _____
 T8 _____ L2
 T10 _____

T3 _____
 T5 _____
 T9 _____ L3
 T11 _____

LOW VOLTAGE

T12 _____ L1
 T1 _____

T4 _____
 T7 _____

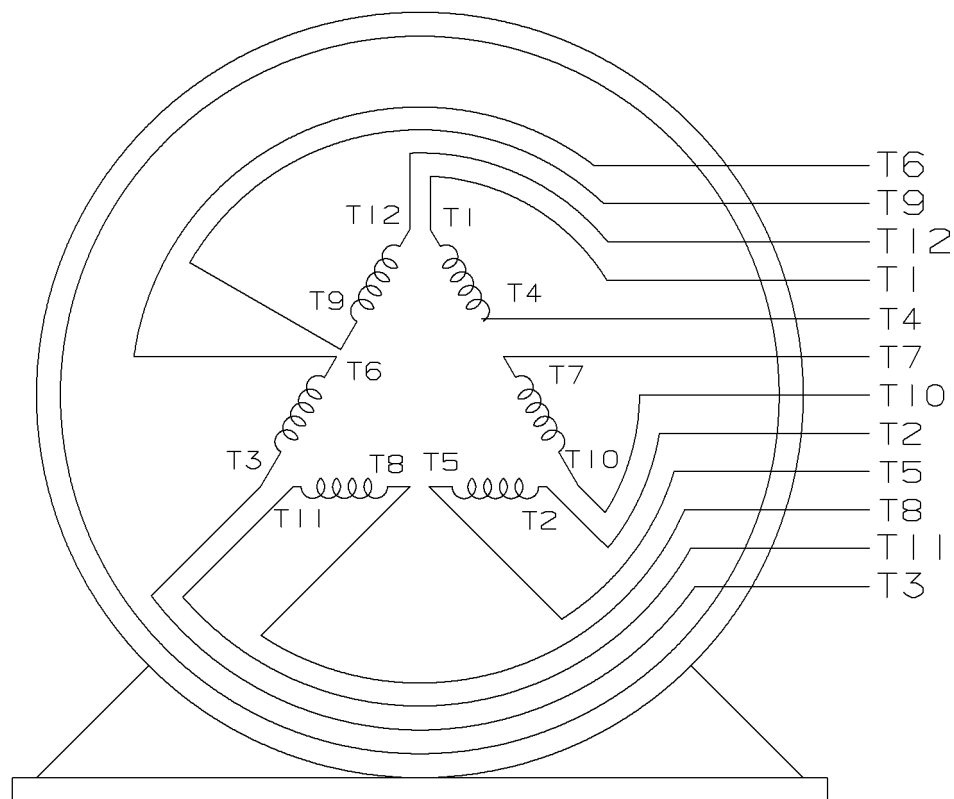
T2 _____ L2
 T10 _____

T5 _____
 T8 _____

T3 _____ L3
 T11 _____

T6 _____
 T9 _____

HIGH VOLTAGE



VIEW OF TERMINAL END

					✓ UNLESS OTHERWISE SPECIFIED DIMENSIONS ARE IN INCHES TOL. ON XX±.02 XXX±.005 XXXX±.0005 ANGLES± 7°30"		
2	08-09-1999	RE-ISSUE, ADDED '-' TO PART NUMBER	BLR		MAX. SURFACE ROUGHNESS UNLESS OTHERWISE NOTED		DRAWN BY TRB 07-16-1999
					FINISH		CHKD BY ML 06-18-1999
1	06-18-1999	NEW DRAWING	TRB		MATERIAL		APPD BY GK 06-18-1999
REV	DATE	CHANGE	NAME	PART NAME 3 PHASE CONNECTION DIAGRAM 2/1 DELTA - 12 LEADS			DRWG NO A- EE7308AA-LN
				PURCHASED		CADD FILE NO.	EE7308AALN

ERROR: undefined
OFFENDING COMMAND: Pscrip
STACK:



CERTIFICATION DATA SHEET

2100 WASHINGTON ST.
GRAFTON, WI
PH. 262-277-8810

CONN. DIAGRAM: A-EE7308AA-LN

OUTLINE: XG2F1SS1-1550

CATALOG : LM13699

WINDING #: L3244043 1

MOUNTING: F1/F2 CAPABLE

TYPICAL MOTOR PERFORMANCE DATA

HP	kW	SYNC. RPM	F.L. RPM	FRAME	ENCLOSURE	KVA CODE	DESIGN
40&30	30.0&22.4	1800	1780&1483	324T	TEFC	F	B

PH	Hz	VOLTS	AMPS	START TYPE	DUTY	INSL	S.F.	AMB°C
3	60/50	230/460&190/380	101/50.5&90/45	WYE START DELTA RUN	CONTINUOUS	F1	1.25/1.15	40

FULL LOAD EFF:	94.1&93.6	3/4 LOAD EFF:	94.1	1/2 LOAD EFF:	93	GTD. EFF		ELEC. TYPE
FULL LOAD PF:	79.5&80	3/4 LOAD PF:	75	1/2 LOAD PF:	65	93		SQ CAGE IND RUN

F.L. TORQUE	LOCKED ROTOR AMPS	L.R. TORQUE	B.D. TORQUE	F.L. RISE°C
118 LB-FT	540 / 270	215 LB-FT 183 %	250 LB-FT 212 %	45

SOUND PRESSURE @ 3 FT.	SOUND POWER	ROTOR WK^2	MAX. WK^2	SAFE STALL TIME	STARTS / HOUR	APPROX. MOTOR WGT
- dBA	- dBA	0 LB-FT^2	- LB-FT^2	- SEC.	-	- LBS.

*** SUPPLEMENTAL INFORMATION ***

DE BRACKET TYPE	ODE BRACKET TYPE	MOUNT TYPE	ORIENTATION	SEVERE DUTY	HAZARDOUS LOCATION	DRIP COVER	SCREENS	PAINT
STANDARD	STANDARD	RIGID	HORIZONTAL	FALSE	NONE	FALSE	NONE	GRAY - LINCOLN

BEARINGS		GREASE	SHAFT TYPE	SPECIAL DE	SPECIAL ODE	SHAFT MATERIAL	FRAME MATERIAL
DE	ODE						
BALL	BALL	POLYREX EM	T	NONE	NONE	1045 HOT ROLLED (C-204)	ROLLED STEEL
6311	6309						

THERMO-PROTECTORS				THERMISTORS	CONTROL	SPACE HEATERS
THERMOSTATS	PROTECTORS	WDG RTDs	BRG RTDs			
NONE	NOT	NONE	NONE	NONE	FALSE	NONE VOLTS

*

N

O

T

E

S

*

INVERTER TORQUE: NONE
INV. HP SPEED RANGE: NONE
ENCODER: NONE
NONE NONE
NONE NONE PPR
BRAKE: NONE NONE
NONE P/N NONE
NONE NONE
FT-LB NONE V NONE Hz

Data Sheet

Date: 1/31/2018

LM13699



Data @ 460 V

Motor Load Data

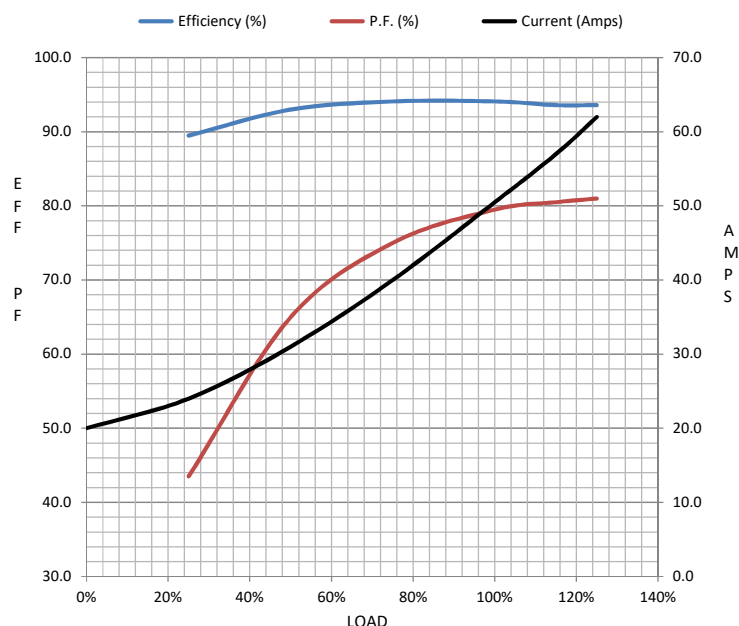
Load	0%	25%	50%	75%	100%	115%	125%	LR	
Current (Amps)	20.0	24.0	31.0	40.0	50.5	57.0	62.0	270	
Torque (ft-lb)	0.00	29.5	58.5	88.0	118	136	148	215	
RPM	1800	1795	1790	1785	1780	1.778	1775	0	
Efficiency (%)		89.5	93.0	94.1	94.1	93.6	93.6		
P.F. (%)	3.5	43.5	65.0	75.0	79.5	80.5	81.0	32.0	

Motor Speed Data

	LR	Pull-Up	BD	Rated	Idle
Speed (RPM)	0	900	1735	1780	1800
Current (Amps)	270	243	148	50.5	20.0
Torque (ft-lb)	215	183	250	118	0.00

Information Block

HP	40.0			
Sync. RPM	1800			
Frame	324			
Enclosure	TEFC			
Construction	TFR			
Voltage	230/460#190/380		V	
Frequency	60		Hz	
Design	B			
LR Code letter	F			
Service Factor	1.15			
Temp Rise @ FL	45		° C	
Duty	CONT			
Ambient	40 ° C			
Elevation	1,000		feet	
Rotor/Shaft wk²	0.00		Lb-Ft²	
Ref Wdg	L3244043	NONE		
Sound Pressure @ 1M	999		dBA	
VFD Rating	NONE			
Outline Dwg	XG2F1SS1-1550			
Conn. Diag	A-EE7308AA-LN			
Additional Specifications:				
0				
0				
EQUIV CKT (OHMS / PHASE)				
R1	R2	X1	X2	Xm
0.0850	0.0570	0.5460	1.0280	13.2580



Speed - Torque Curve

