

PRODUCT INFORMATION PACKET

Model No: LM06105

Catalog No: LM06105

Encoder Motors, TENV, 1 HP, 3 Ph, 60 Hz, 230/460 V, 875 RPM, 184TC Frame

Regal and are trademarks of Regal Rexnord Corporation or one of its affiliated companies.
©2022 Regal Rexnord Corporation, All Rights Reserved. MC017097E

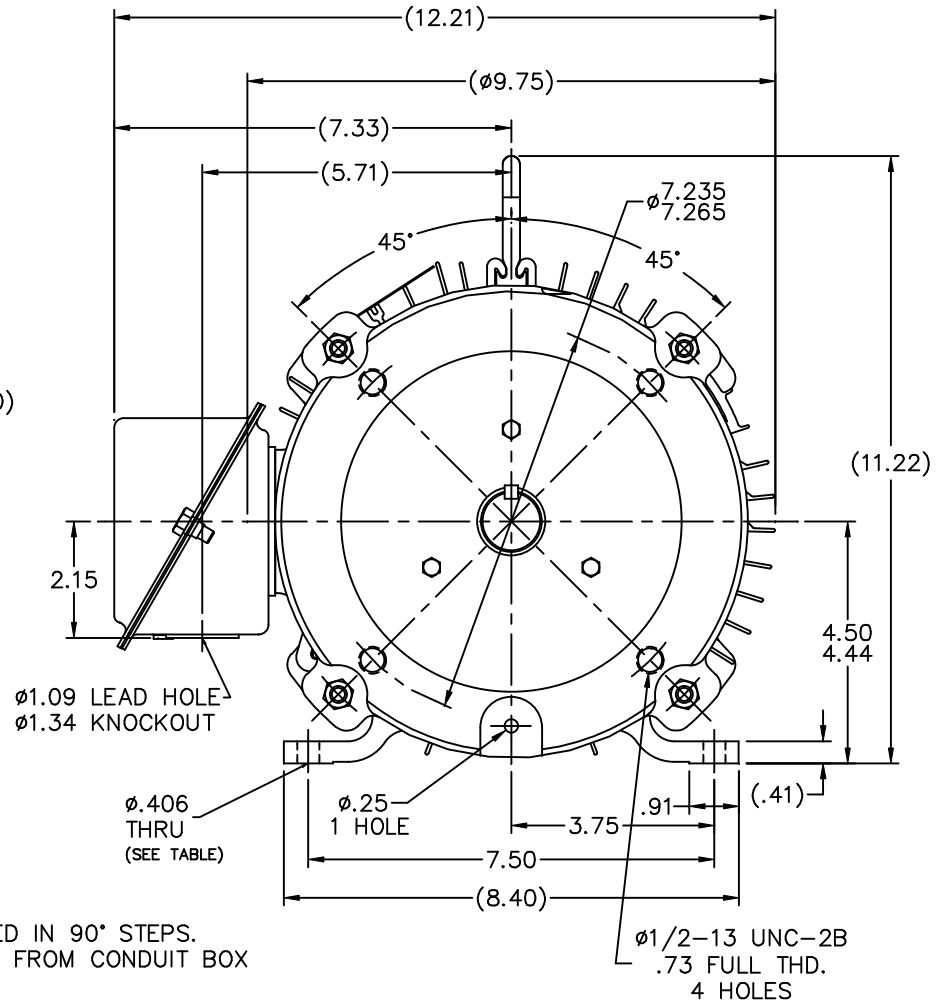
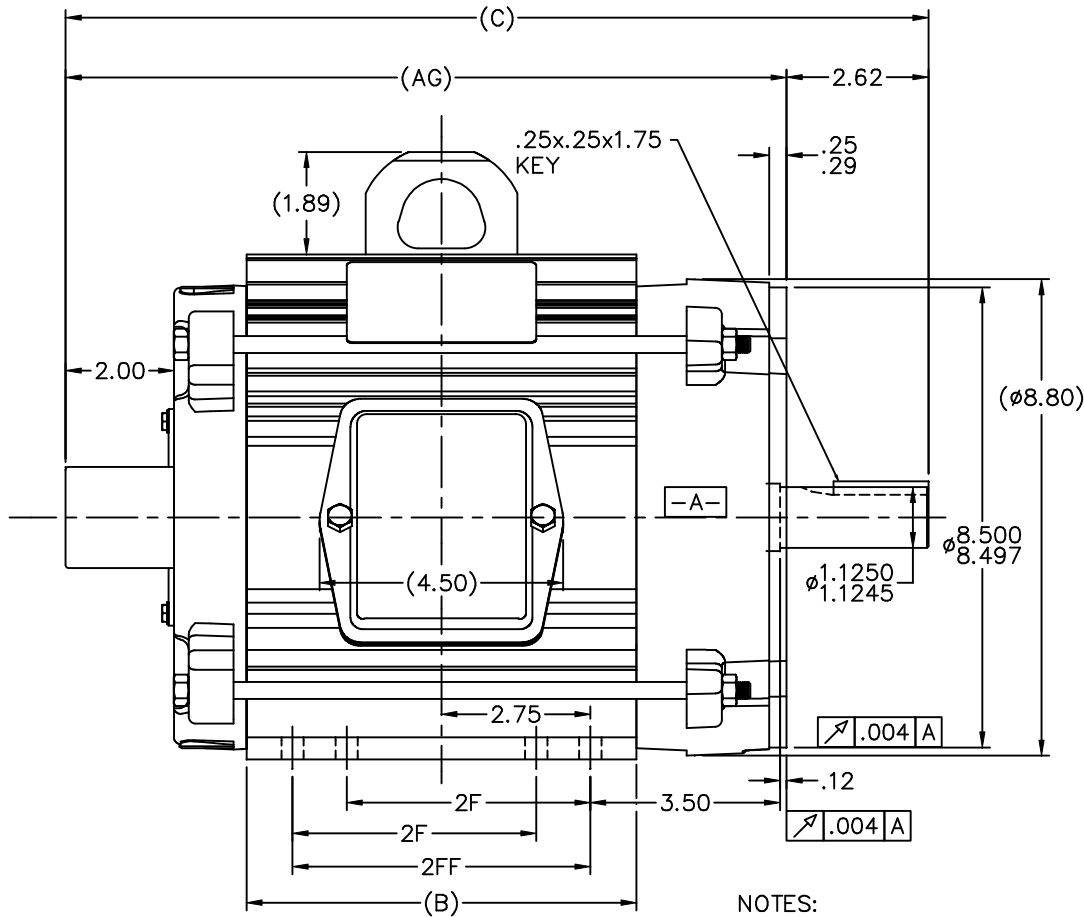


Nameplate Specifications

Output HP	1 Hp	Output KW	0.75 kW
Frequency	60 Hz	Voltage	230/460 V
Current	5.0/2.5 A	Speed	875 rpm
Service Factor	1.15	Phase	3
Efficiency	72.5 %	Power Factor	50
Duty	Continuous	Insulation Class	F
Design Code	INV	KVA Code	M
Frame	184TC	Enclosure	Totally Enclosed Non Ventilated
Thermal Protection	No Protection	Ambient Temperature	40 °C
Drive End Bearing Size	207	Opp Drive End Bearing Size	205
UL	Recognized	CSA	Y
CE	Y	IP Code	43
Number of Speeds	1		

Technical Specifications

Electrical Type	Squirrel Cage Inverter Duty	Starting Method	Inverter Only
Poles	8	Rotation	Reversible
Resistance Main	13.4 Ohms	Mounting	Rigid Base
Motor Orientation	Horizontal	Drive End Bearing	Ball
Opp Drive End Bearing	Ball	Frame Material	Aluminum
Shaft Type	T	Overall Length	16.57 in
Frame Length	7.30 in	Shaft Diameter	1.125 in
Shaft Extension	2.87 in	Assembly/Box Mounting	F1/F2 CAPABLE
Inverter Load	CONSTANT 2000:1		
Connection Drawing	A-EE7308T-LN	Outline Drawing	B-SS601040LN-720



- NOTES:
 1. CONDUIT BOX BE ROTATED IN 90° STEPS.
 2. NAMEPLATE TO BE READ FROM CONDUIT BOX SIDE OF MOTOR.

620										182T	15.57	12.95	6.20	-	4.50	2.25	4	6		ADDED 4.50 TO DASH 620 2FF COLUMN CN 33875	TAT 06-23-2005	ML	TOLERANCES UNLESS SPECIFIED		DRAWN BJW 06-30-2000		
720										182/4T	16.57	13.95	7.20	4.50	5.50	2.75	8	5		REV. DASH 720 COLUMN	RWR 04-13-2004	ML	DEC.	INCHES		CHK DRS 06-30-2000	
720										184	16.57	13.95	7.20	-	5.50	2.75	4	4		REMOVE ADAPTER AND REPLACE W/COVER CN37404	RWR 02-09-2004	ML	X	±.1		APPD TB 06-30-2000	
820										182/4T	17.57	14.95	8.20	4.50	5.50	3.25	8	3		ADDED 2FF TO TABULATED CHART	TAT 01-30-2004	ML	.XX	±.03		SCALE 7=16	
875										184T	18.12	15.50	8.75	5.50	7.50	3.25	8	2		DASH 720/184T FOOT HOLE 8 WAS 4	CN 31573 HLB 05-24-2001	ML	.XXX	±.005		REF	
DASH										FRAME	C	AG	B	2F	2FF	BS	FOOT HOLE QTY.	1		NEW DRAWING	MU31623 BJV 06-30-2000	ML	.XXXX	±.0005		MATL	
																		NO.		REVISION	BY & DATE	CHK	ANG	±1/2"		FINISH	
																		THIS DRAWING IN DESIGN AND DETAIL IS OUR PROPERTY AND MUST NOT BE USED EXCEPT IN CONNECTION WITH OUR WORK ALL RIGHTS OF DESIGN AND INVENTION ARE RESERVED THIS IS AN ELECTRONICALLY GENERATED DOCUMENT - DO NOT SCALE THIS PRINT		RFP		CAD FILE ss601040ln		SIZE	DRAWING NO.	PAGE 1 OF 1	REV.
																				DIST	LB			B	SS601040LN	6	



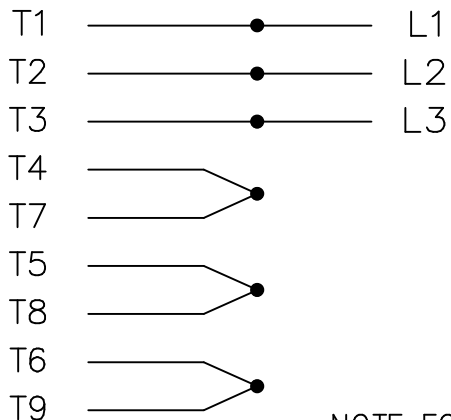
ERROR: syntaxerror
OFFENDING COMMAND: --nostringval--

STACK:

/p2e
-savelevel-

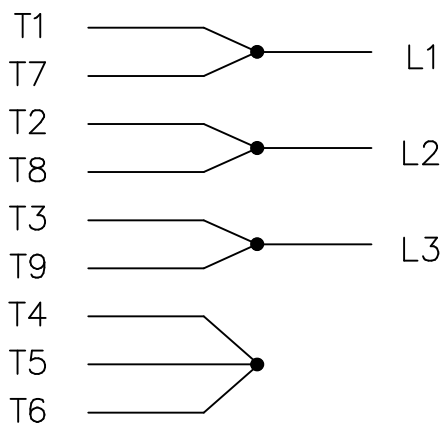
THREE PHASE
DUAL VOLTAGE MOTOR

HIGH VOLTAGE

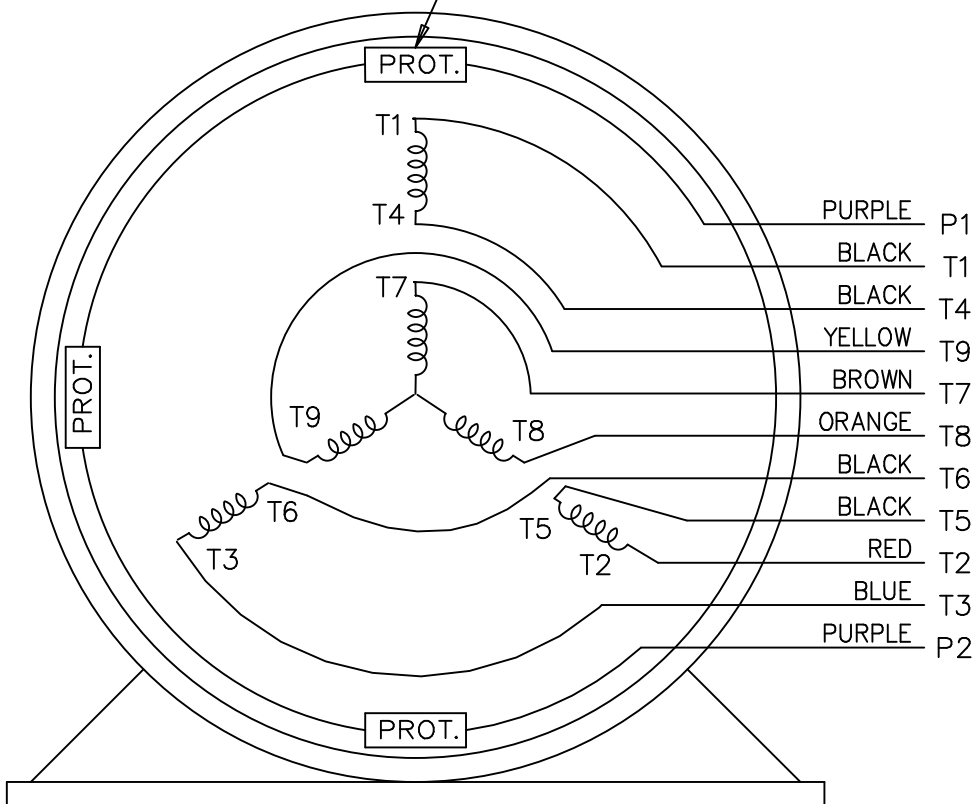


NOTE FOR FACTORY USE ONLY:
TO SURGE TEST FOR COMMON CONNECT:
HIGH VOLT: CONNECT P1 TO T1
THEN P2 TO L1
LOW VOLT: CONNECT P1 TO T1 & T7,
THEN P2 TO L1

LOW VOLTAGE



THREMO-PROTECTORS
CONNECTED IN SERIES.



VIEW OF TERMINAL END

				TOLERANCES UNLESS SPECIFIED			DRAWN BJK 07-16-2002			
				DEC.	INCHES		CHK DRS 07-18-2002			
				.X	±.1		APPD GK 07-18-2002			
				.XX	±.02		SCALE 1=1			
2	ADDED COLORS TO "T & P" LEADS	CN 40494	MSG 08-08-2006	ML	.XXX	±.005	TITLE CONNECTION DIAGRAM 3 PHASE - DUAL VOLTAGE MOTOR		REF	
1	NEW DRAWING		BJK 07-18-2002	DRS	.XXXX	±.0005	MAT'L.		FMF	
NO.	REVISION		BY & DATE	CHK	ANG	±7'30"	FINISH		PREV	
THIS DRAWING IN DESIGN AND DETAIL IS OUR PROPERTY AND MUST NOT BE USED EXCEPT IN CONNECTION WITH OUR WORK ALL RIGHTS OF DESIGN AND INVENTION ARE RESERVED THIS IS AN ELECTRONICALLY GENERATED DOCUMENT - DO NOT SCALE THIS PRINT				RFP	CAD FILE ee7308t_ln			SIZE	DRAWING NO. PAGE OF	REV.
				DIST	LB			A	EE7308T-LN	2



1051 CHEYENNE AVE.
GRAFTON, WI 53024
PH. 262-277-8810

DATA VOLTS: 460

CERTIFICATION DATA SHEET

CONN. DIAGRAM: A-EE7308T-LN
OUTLINE: B-SS601040LN-720
WINDING: 18489

CAT #: LM06105

R5 6

TYPICAL MOTOR PERFORMANCE DATA

HP	KW	SYNC RPM	FL RPM	FRAME	ENCLOSURE	TYPE	KVA CODE	DESIGN
1	0.75	900	875	184TC	TENV	TTL	M	INF

PH	HZ	VOLTS	AMPS	START TYPE	DUTY	INSL	S.F.	AMB	ELEV.
3	60	230/460	5/2.5	INVERTER ONLY	CONT	F	1.15	40	3300

F.L. EFF	72.5	3/4 LD EFF	68.5	1/2 LD EFF	61.5	GTD EFF	ELECT. TYPE
F.L. PF	50.0	3/4 LD PF	42.0	1/2 LD PF	33.0	67.5	SQ CAGE INV DUTY

F.L. TORQUE	LR AMPS @ 460 V	L.R. TORQUE	B.D. TORQUE	F.L. RISE (° C)
6.0 LB-FT	14.0	17.5 LB-FT 292%	24.5 LB-FT 408%	80

PRESSURE @ 3	SOUND	POWER	ROTOR WK²	MAX. LOAD WK²	SAFE STALL TIME	STARTS/HOUR	MOTOR WGT
60 dBA	69 dBA		0.32 LB-FT²	0 LB-FT²	0 SEC.	0	70 LB.

***** SUPPLEMENTAL INFORMATION *****

DE BRACKET TYPE	ODE BRACKET TYPE	MOUNT TYPE	MOTOR ORIENTATION	SEVERE DUTY	HAZARDOUS LOCATION	DRIP COVER	SCREENS	PAINT
C-FACE	ENCODER	RIGID	HORIZONTAL	NO	NONE	NO	NONE	WATTSAVER

BEARINGS		GREASE	SHAFT TYPE	SPECIAL DE	SPECIAL ODE	SHAFT MATERIAL	FRAME MATERIAL
DE	ODE	POLYREX EM	T	NONE	NONE	1144 STRESSPROOF (C-223)	ALUMINUM
BALL	BALL						
207	205						

THERMOSTATS	PROTECTORS	WDG RTD's	BRG RTD's	THERMISTORS	CONTROL	SPACE HEATERS
TSTATS (N/C)	NOT	NONE	NONE	NONE	FALSE	NA

R1 (ohms/ph)	R2 (ohms/ph)	X1 (ohms/ph)	X2 (ohms/ph)	Xm (ohms/ph)	VIBRATION (in/sec)	FLOAT
7.838	5.311	12.808	21.584	113.884	0.150	ODE

* N O T E S *	INVERTER TORQUE: CONSTANT 100:1 INV. HP SPEED RANGE: NONE	
	ENCODER: DYNAPAR 625 LINCOLN NONE NONE PPR	
	BRAKE: NONE NONE NONE	
	FT-LB: NA VOLTAGE: NONE HZ:	
	UL: V-INS, CONST, OVERHEAT PRT DEV UL REC	

DATE: 9/6/2018

Data Sheet

Date: 9/6/2018

LM06105



Data @ **460 V**

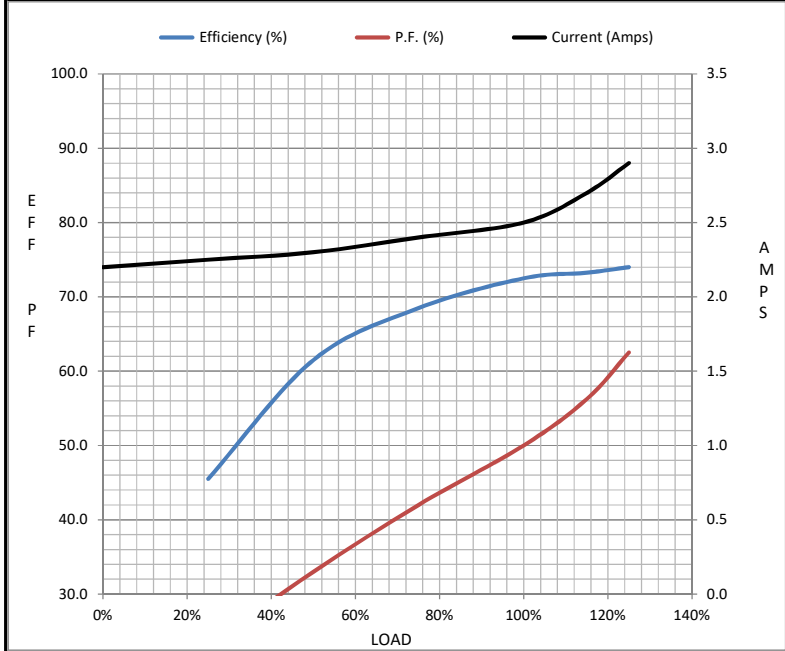
Motor Load Data

Load	0%	25%	50%	75%	100%	115%	125%	LR
Current (Amps)	2.20	2.25	2.30	2.40	2.50	2.70	2.90	14.0
Torque (ft-lb)	0.00	1.50	3.0	4.5	6.0	7.5	9.0	17.5
RPM	900	892	885	880	875	871	865	0
Efficiency (%)		45.5	61.5	68.5	72.5	73.3	74.0	
P.F. (%)	13.0	23.0	33.0	42.0	50.0	56.3	62.5	60.0

Motor Speed Data

	LR	Pull-Up	BD	Rated	Idle
Speed (RPM)	0	450	580	875	900
Current (Amps)	14.0	12.5	9.0	2.50	2.20
Torque (ft-lb)	17.5	15.5	24.5	6.0	0.00

Information Block				
HP	1.0			
Sync. RPM	900			
Frame	184			
Enclosure	TENV			
Construction	TTL			
Voltage	230/460 V			
Frequency	60 Hz			
Design	B			
LR Code letter	M			
Service Factor	1.15			
Temp Rise @ FL	80 ° C			
Duty	CONT			
Ambient	40 ° C			
Elevation	1,000 feet			
Rotor/Shaft wk ²	0.32 Lb-Ft ²			
Ref Wdg	18489 R5			
Sound Pressure @ 1M	60 dBA			
VFD Rating	CONSTANT 100:1			
Outline Dwg	B-SS601040LN-720			
Conn. Diag	A-EE7308T-LN			
Additional Specifications:				
0				
0				
EQUIV CKT (OHMS / PHASE)				
R1	R2	X1	X2	Xm
7.8380	5.3110	12.8080	21.5840	113.8840



Speed - Torque Curve

