

PRODUCT INFORMATION PACKET

Model No: LM06103

Catalog No: LM06103

Encoder Motors, TENV, 1 HP, 3 Ph, 60 Hz, 230/460 V, 1170 RPM, 182TC Frame



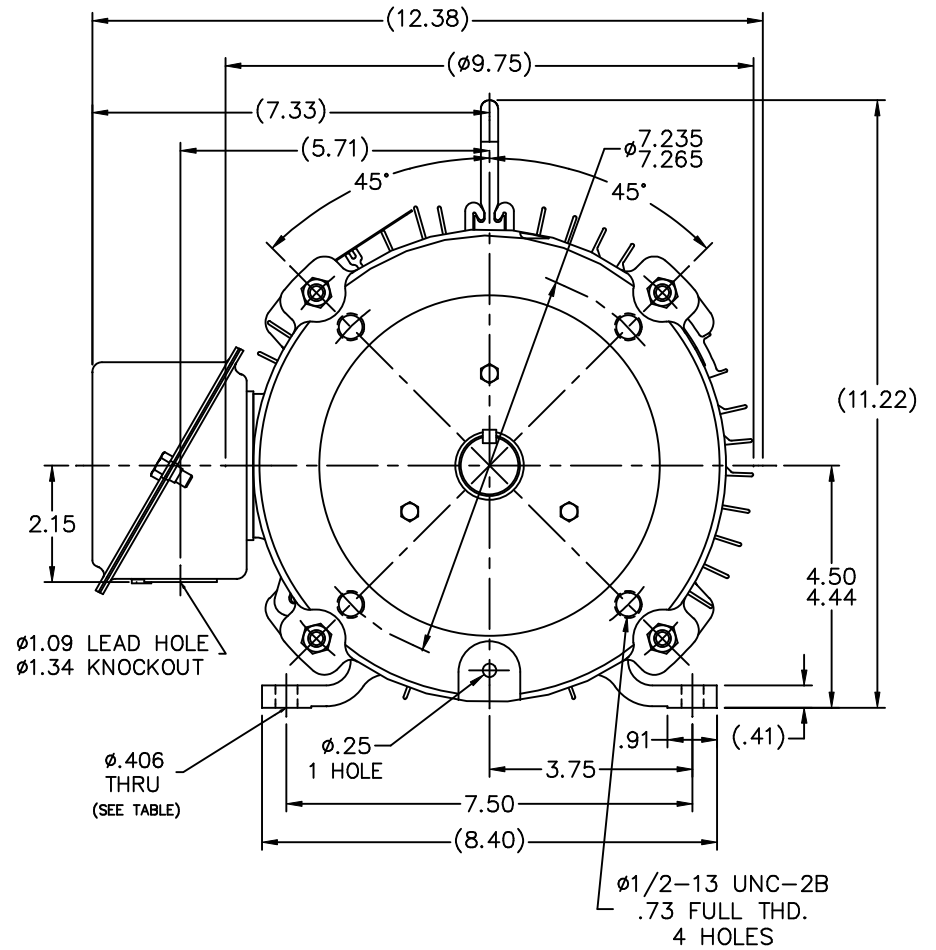
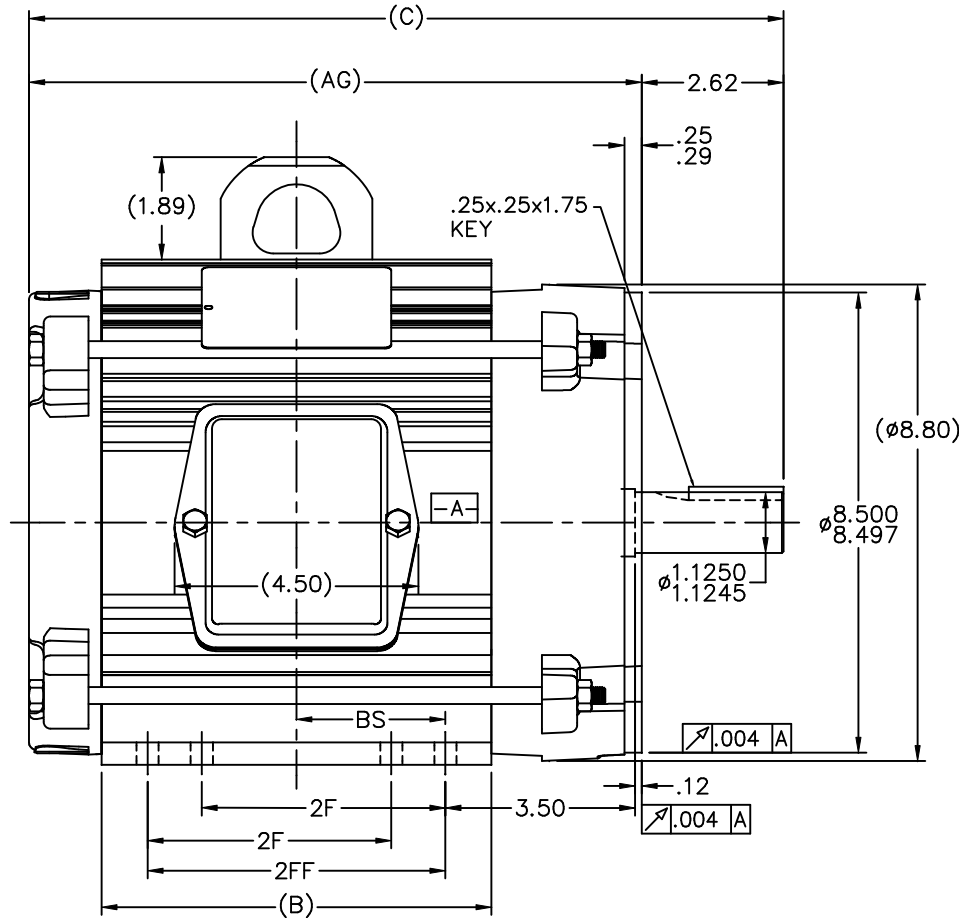
Regal and are trademarks of Regal Rexnord Corporation or one of its affiliated companies.
©2022 Regal Rexnord Corporation, All Rights Reserved. MC017097E

Nameplate Specifications

Output HP	1 Hp	Output KW	0.75 kW
Frequency	60 Hz	Voltage	230/460 V
Current	3.6/1.8 A	Speed	1170 rpm
Service Factor	1	Phase	3
Efficiency	82.5 %	Power Factor	64
Duty	Continuous	Insulation Class	F
Design Code	INV	KVA Code	M
Frame	182TC	Enclosure	Totally Enclosed Non Ventilated
Thermal Protection	No Protection	Ambient Temperature	40 °C
Drive End Bearing Size	207	Opp Drive End Bearing Size	205
UL	Recognized	CSA	Y
CE	N	IP Code	43
Number of Speeds	1		

Technical Specifications

Electrical Type	Squirrel Cage Inverter Duty	Starting Method	Inverter Only
Poles	6	Rotation	Reversible
Resistance Main	12.5 Ohms	Mounting	Rigid Base
Motor Orientation	Horizontal	Drive End Bearing	Ball
Opp Drive End Bearing	Ball	Frame Material	Aluminum
Shaft Type	T	Overall Length	12.94 in
Frame Length	6.20 in	Shaft Diameter	1.125 in
Shaft Extension	2.75 in	Assembly/Box Mounting	F1/F2 CAPABLE
Inverter Load	CONSTANT 2000:1		
Connection Drawing	A-EE7308-LN	Outline Drawing	B-SS601035LN-620



- NOTES:
 1. CONDUIT BOX BE ROTATED IN 90° STEPS.
 2. NAMEPLATE TO BE READ FROM CONDUIT BOX SIDE OF MOTOR.

DASH	FR.	C	BS	B	2F	2FF	AG	FOOT HOLE
620	182T	12.94	2.25	6.20	4.50	-	10.32	4
720	182/4T	13.94	2.75	7.20	4.50	5.50	11.32	8
720	184T	13.94	2.75	7.20	4.50	5.50	11.32	4
820	182/4T	14.94	3.25	8.20	5.50	6.50	12.32	8
875	182/4T	15.49	3.52	8.75	5.50	7.00	12.87	8

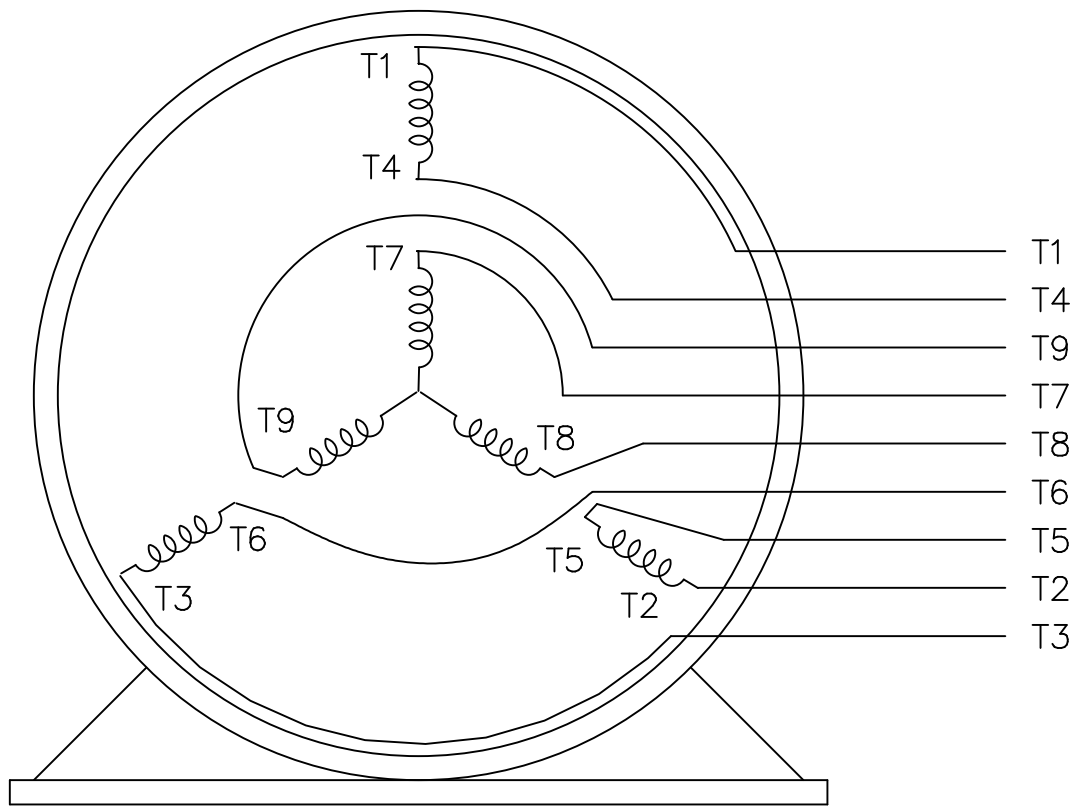
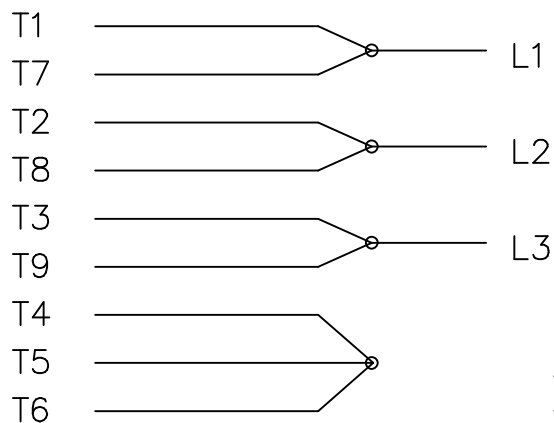
		TOLERANCES UNLESS SPECIFIED		Lincoln MOTOR		DRAWN B/JW 05-25-2000	
		DEC.	INCHES			CHK	ML 05-26-2000
		.X	±.1			APPD	TB 05-26-2000
3	ADDED 2FF TO TABULATED CHART	TAT	01-30-2004	ML	.XX ±.03	TITLE OUTLINE	
2	DASH 720/184T FOOT HOLE 8 WAS 4	CN	31573	HLB	05-24-2001	180T FR. - TENV - C' FACE	
1	NEW DRAWING	MU30947		BJW	05-26-2000	MATL.	
NO.	REVISION	BY & DATE	CHK	ANG	±1/2"	FINISH	PREV
THIS DRAWING IN DESIGN AND DETAIL IS OUR PROPERTY AND MUST NOT BE USED EXCEPT IN CONNECTION WITH OUR WORK ALL RIGHTS OF DESIGN AND INVENTION ARE RESERVED THIS IS AN ELECTRONICALLY GENERATED DOCUMENT - DO NOT SCALE THIS PRINT						RFP	CAD FILE ss601035ln
						DIST	LB
						SIZE	DRAWING NO. PAGE OF REV.
						B	SS601035LN 3

THREE PHASE
DUAL VOLTAGE MOTOR

HIGH VOLTAGE



LOW VOLTAGE



VIEW OF TERMINAL END

REF.
WINDING DIAGRAM

T8Y, T2Y, T2BL, T4BX, T2EC, T2G
T6BZ, T2B, T6BL, T4AV, T6B, T4B

OPTIONAL CORD
CONNECTION

L1 — WHITE
L2 — RED
L3 — BLACK

NO.	REVISION	BY & DATE	CHK	TOLERANCES UNLESS SPECIFIED		FINISH	DRAWN	DATE			
				DEC.	INCHES						
				.X	±.1		BLR	06/11/1999			
							ML	06/18/1999			
							GK	06/18/1999			
3	ADDED THE OPTIONAL CORD CONNECTION MU46318	RDH 04/24/2003	DRS	.XX	±.02	TITLE CONNECTION DIAGRAM		SCALE 1=1			
2	RE-ISSUE, ADDED '-' TO PART NUMBER	BLR 08/09/1999	GK	.XXX	±.005	3∅ - DUAL VOLTAGE MOTOR		REF			
1	NEW DRAWING	BLR 06/18/1999	GK	.XXXX	±.0005	MAT'L.		FMF			
				ANG	±7'30"			PREV			
THIS DRAWING IN DESIGN AND DETAIL IS OUR PROPERTY AND MUST NOT BE USED EXCEPT IN CONNECTION WITH OUR WORK ALL RIGHTS OF DESIGN AND INVENTION ARE RESERVED THIS IS AN ELECTRONICALLY GENERATED DOCUMENT - DO NOT SCALE THIS PRINT				RFP	CAD FILE EE7308LN			SIZE A	DRAWING NO. EE7308-LN	PAGE OF 3	REV. 3
				DIST WP							





**2100 WASHINGTON ST.
GRAFTON, WI
PH. 262-277-8810**

CONN. DIAGRAM: A-EE7308-LN

CATALOG # : LM06103

OUTLINE: B-SS601035LN-620

WINDING #: K182651 2

MOUNTING: F1/F2 CAPABLE

TYPICAL MOTOR PERFORMANCE DATA

HP	kW	SYNC. RPM	F.L. RPM	FRAME	ENCLOSURE	KVA CODE	DESIGN
1	0.75	1200	1170	182TC	TENV	M	INV

PH	Hz	VOLTS	AMPS	START TYPE	DUTY	INSL	S.F.	AMB°C
3	60	230/460	3.6/1.8	INVERTER ONLY	CONTINUOUS	F3	1.0	40

FULL LOAD EFF:	82.5	3/4 LOAD EFF:	80	1/2 LOAD EFF:	76.5	GTD. EFF	ELEC. TYPE
FULL LOAD PF:	64	3/4 LOAD PF:	54.5	1/2 LOAD PF:	42	80	SQ CAGE INV DUTY

F.L. TORQUE	LOCKED ROTOR AMPS	L.R. TORQUE	B.D. TORQUE	F.L. RISE°C
4.5 LB-FT	27 / 13.5	14 LB-FT 311 %	17.8 LB-FT 396 %	65

SOUND PRESSURE @ 3 FT.	SOUND POWER	ROTOR WK^2	MAX. WK^2	SAFE STALL TIME	STARTS / HOUR	APPROX. MOTOR WGT
60 dBA	70 dBA	0.32 LB-FT^2	- LB-FT^2	- SEC.	-	70 LBS.

***** SUPPLEMENTAL INFORMATION *****

DE BRACKET TYPE	ODE BRACKET TYPE	MOUNT TYPE	ORIENTATION	SEVERE DUTY	HAZARDOUS LOCATION	DRIP COVER	SCREENS	PAINT
C-FACE	STANDARD	RIGID	HORIZONTAL	FALSE	NONE	FALSE	NONE	GRAY - LINCOLN

BEARINGS		GREASE	SHAFT TYPE	SPECIAL DE	SPECIAL ODE	SHAFT MATERIAL	FRAME MATERIAL
DE	ODE						
BALL	BALL	MULTEMP SRL	T	NONE	NONE	1144 STRESSPROOF (C-223)	ALUMINUM
207	205						

THERMO-PROTECTORS				THERMISTORS	CONTROL	SPACE HEATERS
THERMOSTATS	PROTECTORS	WDG RTDs	BRG RTDs			
TSTATS (N/C)	NOT	NONE	NONE	NONE	FALSE	NONE VOLTS

*
N
O
T
E
S
*

INVERTER TORQUE: CONSTANT 2000:1

INV. HP SPEED RANGE: NONE

ENCODER: NONE

NONE NONE

NONE NONE PPR

BRAKE: NONE NONE

NONE P/N NONE

NONE NONE

NONE FT-LB NONE V NONE Hz

Data Sheet

Date: 1/18/2018

LM06103



Data @ 460 V

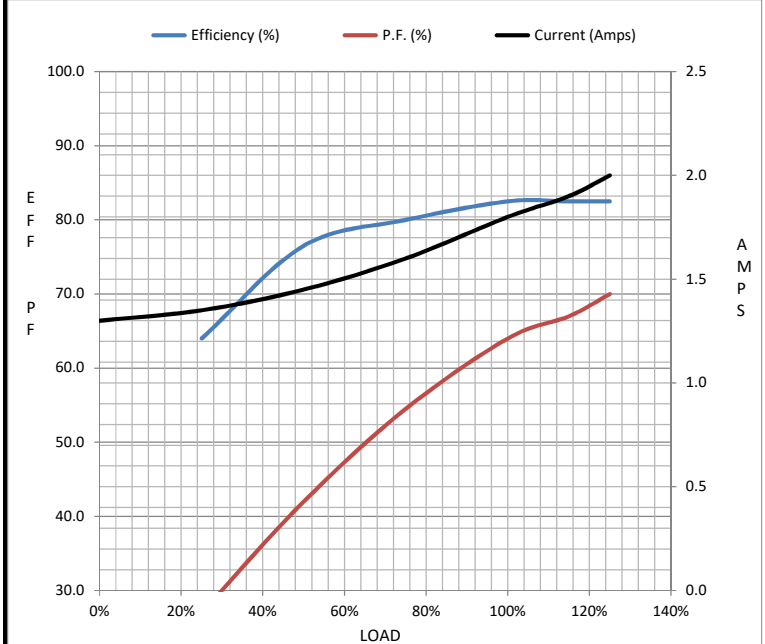
Motor Load Data

Load	0%	25%	50%	75%	100%	115%	125%	LR
Current (Amps)	1.30	1.35	1.45	1.60	1.80	1.90	2.00	13.5
Torque (ft-lb)	0.00	1.10	2.20	3.4	4.5	5.1	5.7	14.0
RPM	1200	1192	1185	1175	1170	1,166	1160	0
Efficiency (%)		64.0	76.5	80.0	82.5	82.5	82.5	
P.F. (%)	9.5	27.0	42.0	54.5	64.0	67.0	70.0	57.0

Motor Speed Data

	LR	Pull-Up	BD	Rated	Idle
Speed (RPM)	0	400	800	1170	1200
Current (Amps)	13.5	12.0	8.5	1.80	1.30
Torque (ft-lb)	14.0	12.8	17.8	4.5	0.00

Information Block				
HP	1.0			
Sync. RPM	1200			
Frame	182			
Enclosure	TENV			
Construction	TTL			
Voltage	230/460 V			
Frequency	60 Hz			
Design	B			
LR Code letter	M			
Service Factor	1.15			
Temp Rise @ FL	65 °C			
Duty	CONT			
Ambient	40 °C			
Elevation	1,000 feet			
Rotor/Shaft wk ²	0.32 Lb-Ft ²			
Ref Wdg	K182651 NONE			
Sound Pressure @ 1M	60 dBA			
VFD Rating	CONSTANT 100:1			
Outline Dwg	B-SS601035LN-620			
Conn. Diag	A-EE7308-LN			
Additional Specifications:				
0				
0				
EQUIV CKT (OHMS / PHASE)				
R1	R2	X1	X2	Xm
7.4980	5.4530	12.7230	15.4780	194.5400



Speed - Torque Curve

