

# PRODUCT INFORMATION PACKET

Model No: LM04142

Catalog No: LM04142

OBSOLETE - REPLACED BY LM32670 - 30,1800,DP,286T,3/60/200/400

Regal and are trademarks of Regal Rexnord Corporation or one of its affiliated companies.  
©2022 Regal Rexnord Corporation, All Rights Reserved. MC017097E



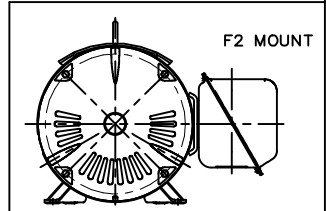
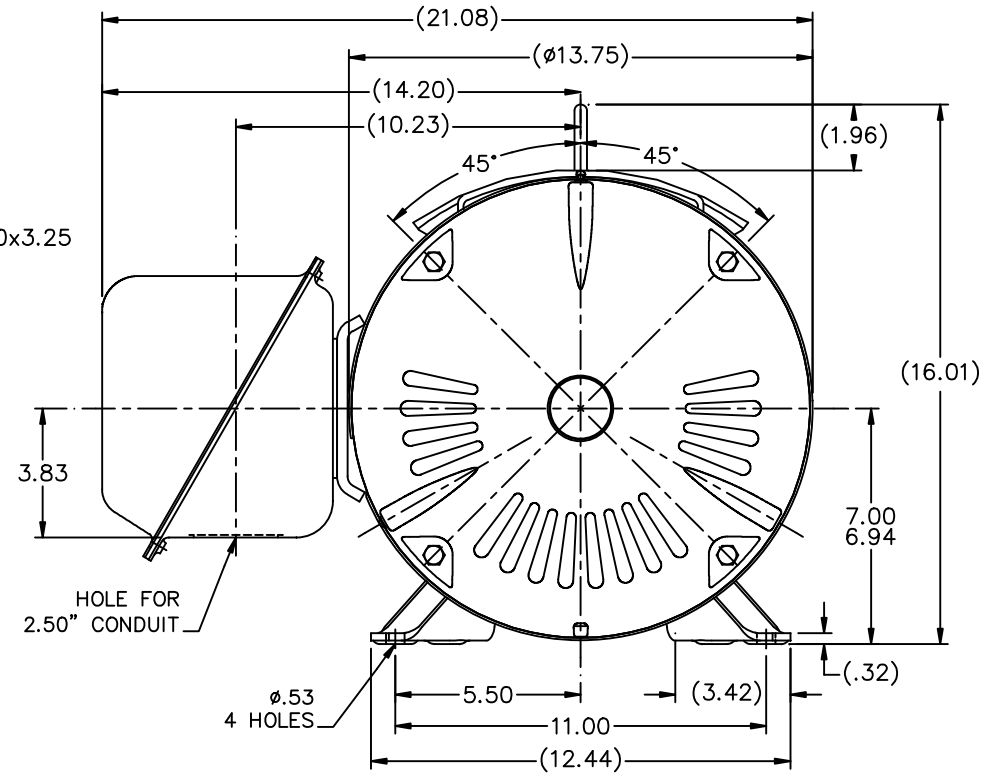
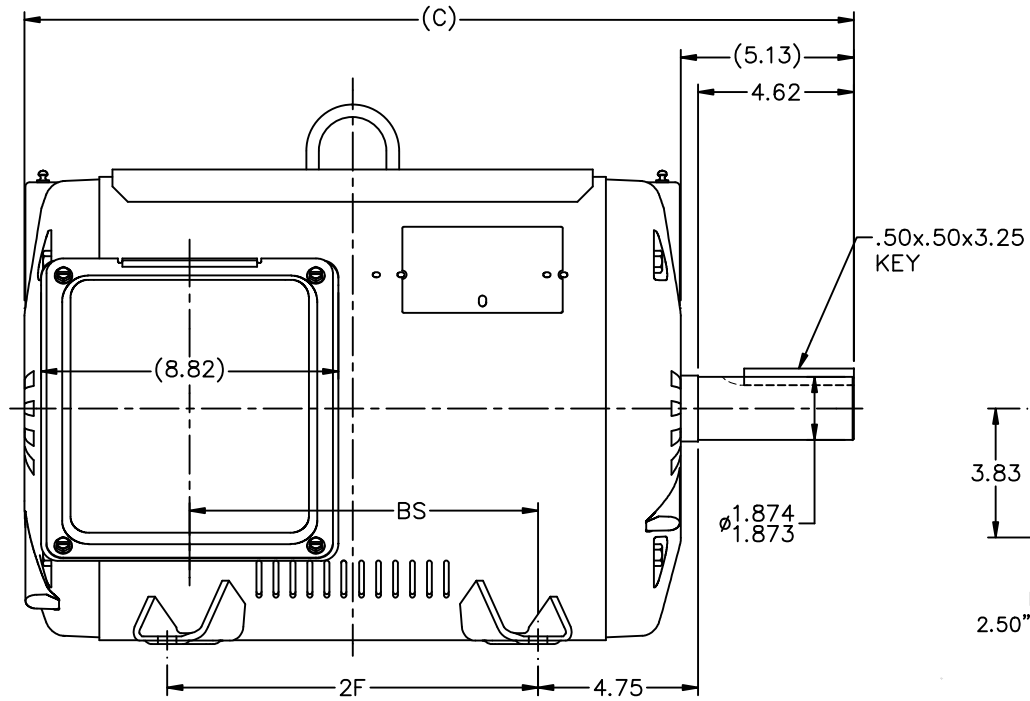
## Nameplate Specifications

Output HP	30 Hp	Output KW	22.4 kW
Frequency	60 Hz	Voltage	200/400 V
Current	86.0/43.0 A	Speed	1765 rpm
Service Factor	1.15	Phase	3
Efficiency	88.5 %	Power Factor	84
Duty	Continuous	Insulation Class	F
Design Code	A	KVA Code	J
Frame	286T	Enclosure	Drip Proof
Thermal Protection	No Protection	Ambient Temperature	40 °C
Drive End Bearing Size	310	Opp Drive End Bearing Size	209
UL	Recognized	CSA	Y
CE	Y	IP Code	22
Number of Speeds	1		

## Technical Specifications

Electrical Type	Squirrel Cage Induction Run	Starting Method	Wye Start Delta Run
Poles	4	Rotation	Reversible
Mounting	Rigid Base	Motor Orientation	Horizontal
Drive End Bearing	Ball	Opp Drive End Bearing	Ball
Frame Material	Rolled Steel	Shaft Type	T
Assembly/Box Mounting	F1/F2 CAPABLE		
Connection Drawing	A-EE7308AA-LN	Outline Drawing	XF1D1SS1-1448

This is an uncontrolled document once printed or downloaded and is subject to change without notice. Date Created:07/18/2022



- NOTES:  
 1. CONDUIT BOX CAN BE ROTATED IN 90° STEPS.  
 2. NAMEPLATES TO BE READ FROM CONDUIT BOX SIDE OF MOTOR.

DASH	FRAME	C	2F	BS			
298	284T	23.11	9.50	9.59			
1448	286T	24.61	11.00	10.34			

			TOLERANCES UNLESS SPECIFIED				
			DEC.	INCHES			
			.X	±.1			
			.XX	±.03			
			.XXX	±.005			
			.XXXX	±.0005			
1	NEW DRAWING REPLACES 3XSD130FSSF-1 CN 34258	TJB 08-30-2001	CHK	ANG	±7°30"	FINISH	
THIS DRAWING IN DESIGN AND DETAIL IS OUR PROPERTY AND MUST NOT BE USED EXCEPT IN CONNECTION WITH OUR WORK ALL RIGHTS OF DESIGN AND INVENTION ARE RESERVED THIS IS AN ELECTRONICALLY GENERATED DOCUMENT - DO NOT SCALE THIS PRINT			RFP		CAD FILE xf1d1ss1		SIZE
			DIST BY				DRAWING NO. PAGE OF REV.
							B XF1D1SS1 1



DRAWN TJB 08-08-2001
CHK ML 08-23-2001
APPD HNH 08-30-2001
SCALE 1=3.65
REF
FMF
PREV

T12 \_\_\_\_\_  
 T1 \_\_\_\_\_  
 T6 \_\_\_\_\_ L1  
 T7 \_\_\_\_\_

T2 \_\_\_\_\_  
 T4 \_\_\_\_\_  
 T8 \_\_\_\_\_ L2  
 T10 \_\_\_\_\_

T3 \_\_\_\_\_  
 T5 \_\_\_\_\_  
 T9 \_\_\_\_\_ L3  
 T11 \_\_\_\_\_

LOW VOLTAGE

T12 \_\_\_\_\_ L1  
 T1 \_\_\_\_\_

T4 \_\_\_\_\_  
 T7 \_\_\_\_\_

T2 \_\_\_\_\_ L2  
 T10 \_\_\_\_\_

T5 \_\_\_\_\_  
 T8 \_\_\_\_\_

T3 \_\_\_\_\_ L3  
 T11 \_\_\_\_\_

T6 \_\_\_\_\_  
 T9 \_\_\_\_\_

HIGH VOLTAGE



VIEW OF TERMINAL END

					✓ UNLESS OTHERWISE SPECIFIED DIMENSIONS ARE IN INCHES TOL. ON XX±.02 XXX±.005 XXXX±.0005 ANGLES± 7°30"		
2	08-09-1999	RE-ISSUE, ADDED '-' TO PART NUMBER	BLR		MAX. SURFACE ROUGHNESS UNLESS OTHERWISE NOTED		DRAWN BY TRB 07-16-1999
					FINISH		CHKD BY ML 06-18-1999
1	06-18-1999	NEW DRAWING	TRB		MATERIAL		APPD BY GK 06-18-1999
REV	DATE	CHANGE	NAME	PART NAME 3 PHASE CONNECTION DIAGRAM 2/1 DELTA - 12 LEADS			DRWG NO A- EE7308AA-LN
				PURCHASED	CADD FILE NO.	EE7308AALN	

ERROR: undefined  
OFFENDING COMMAND: Pscrip  
  
STACK: