

PRODUCT INFORMATION PACKET

Model No: LM03636

Catalog No: LM03636

Obsolete in the US, NO REPLACEMENT 30,1800,ODP,286T,3/60/230/460

Regal and are trademarks of Regal Rexnord Corporation or one of its affiliated companies.
©2022 Regal Rexnord Corporation, All Rights Reserved. MC017097E



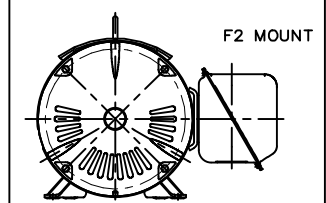
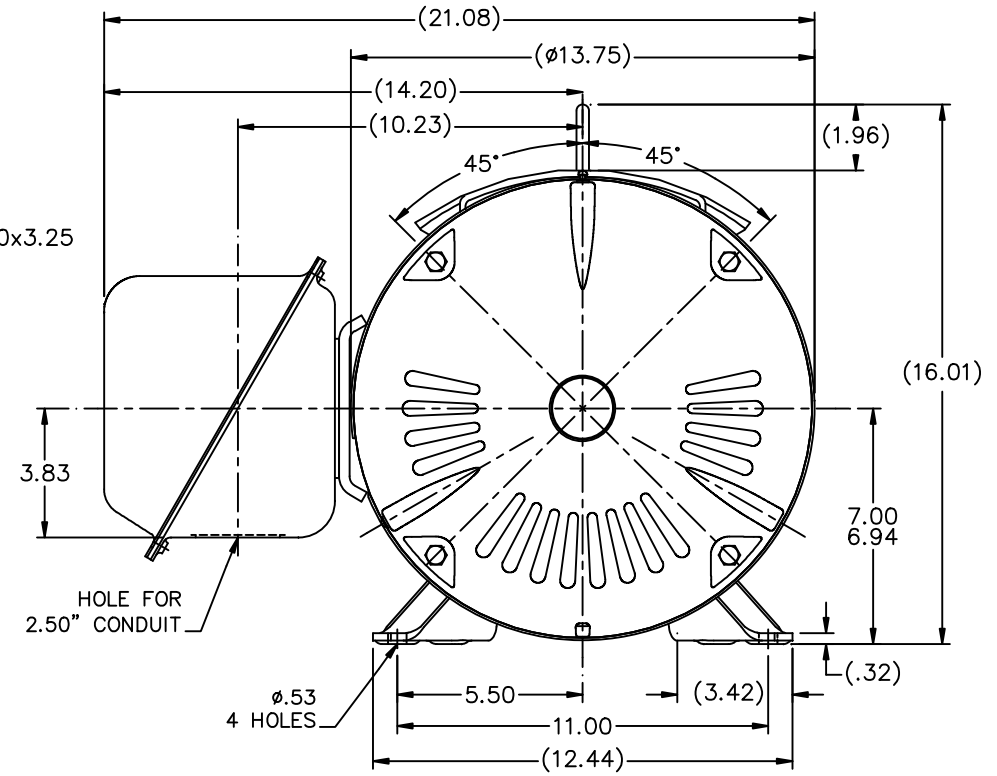
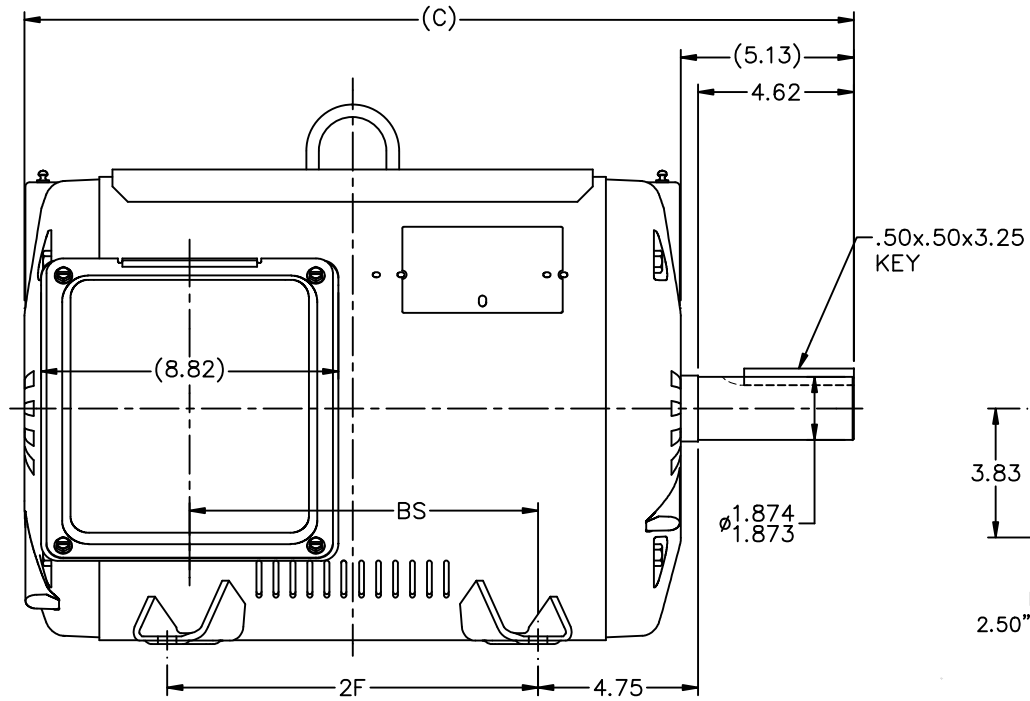
Nameplate Specifications

Output HP	30 Hp	Output KW	22.4 kW
Frequency	60 Hz	Voltage	230/460 V
Current	74.0/37.0 A	Speed	1755 rpm
Service Factor	1	Phase	3
Efficiency	87.5 %	Power Factor	87.5
Duty	Continuous	Insulation Class	F
Design Code	A	KVA Code	H
Frame	286T	Enclosure	Drip Proof
Thermal Protection	No Protection	Ambient Temperature	40 °C
Drive End Bearing Size	6310	Opp Drive End Bearing Size	6209
UL	No	CSA	Y
CE	Y	IP Code	22
Number of Speeds	1		

Technical Specifications

Electrical Type	Squirrel Cage Induction Run	Starting Method	Wye Start Delta Run
Poles	4	Rotation	Reversible
Resistance Main	.506 Ohms	Mounting	Rigid Base
Motor Orientation	Horizontal	Drive End Bearing	Ball
Opp Drive End Bearing	Ball	Frame Material	Rolled Steel
Shaft Type	T	Assembly/Box Mounting	F1 ONLY
Connection Drawing	A-EE7308AA-LN	Outline Drawing	XF1D1SS1-1448

This is an uncontrolled document once printed or downloaded and is subject to change without notice. Date Created:07/18/2022



- NOTES:
 1. CONDUIT BOX CAN BE ROTATED IN 90° STEPS.
 2. NAMEPLATES TO BE READ FROM CONDUIT BOX SIDE OF MOTOR.

DASH	FRAME	C	2F	BS			
298	284T	23.11	9.50	9.59			
1448	286T	24.61	11.00	10.34			

			TOLERANCES UNLESS SPECIFIED				
			DEC.	INCHES			
			.X	$\pm .1$			
			.XX	$\pm .03$			
			.XXX	$\pm .005$			
			.XXXX	$\pm .0005$			
1	NEW DRAWING REPLACES 3XSD130FSSF-1 CN 34258		TJB	08-30-2001			
NO.	REVISION	BY & DATE	CHK	ANG	FINISH		
			RFP	ANG	$\pm 7^{\circ}30'$		
			DIST	BY			
						SIZE	DRAWING NO. PAGE OF REV.
						B	XF1D1SS1 1

THIS DRAWING IN DESIGN AND DETAIL IS OUR PROPERTY AND MUST NOT BE USED EXCEPT IN CONNECTION WITH OUR WORK ALL RIGHTS OF DESIGN AND INVENTION ARE RESERVED THIS IS AN ELECTRONICALLY GENERATED DOCUMENT - DO NOT SCALE THIS PRINT

CAD FILE xf1d1ss1



DRAWN TJB 08-08-2001
 CHK ML 08-23-2001
 APPD HNH 08-30-2001
 SCALE 1=3.65
 REF
 FMF
 PREV

TITLE OUTLINE NEMA MOTORS
 280T ODP STD. EFF.

T12 _____
 T1 _____
 T6 _____ L1
 T7 _____

T2 _____
 T4 _____
 T8 _____ L2
 T10 _____

T3 _____
 T5 _____
 T9 _____ L3
 T11 _____

LOW VOLTAGE

T12 _____ L1
 T1 _____
 T4 _____
 T7 _____
 T2 _____
 T10 _____ L2

T5 _____
 T8 _____
 T3 _____ L3
 T11 _____

T6 _____
 T9 _____

HIGH VOLTAGE



VIEW OF TERMINAL END

					✓ UNLESS OTHERWISE SPECIFIED DIMENSIONS ARE IN INCHES TOL. ON XX±.02 XXX±.005 XXXX±.0005 ANGLES± 7°30"		
2	08-09-1999	RE-ISSUE, ADDED '-' TO PART NUMBER	BLR		MAX. SURFACE ROUGHNESS UNLESS OTHERWISE NOTED		DRAWN BY TRB 07-16-1999
1	06-18-1999	NEW DRAWING	TRB		FINISH		CHKD BY ML 06-18-1999
					MATERIAL		APPD BY GK 06-18-1999
REV	DATE	CHANGE	NAME	PART NAME 3 PHASE CONNECTION DIAGRAM 2/1 DELTA - 12 LEADS			DRWG NO A- EE7308AA-LN
					PURCHASED	CADD FILE NO.	EE7308AALN

ERROR: undefined
OFFENDING COMMAND: Pscrip
STACK: