

PRODUCT INFORMATION PACKET

Model No: LM03377

Catalog No: LM03377

Encoder Motors, TEBC - Axial, 60 HP, 3 Ph, 60 Hz, 230/460 V, 1785 RPM, 364T Frame



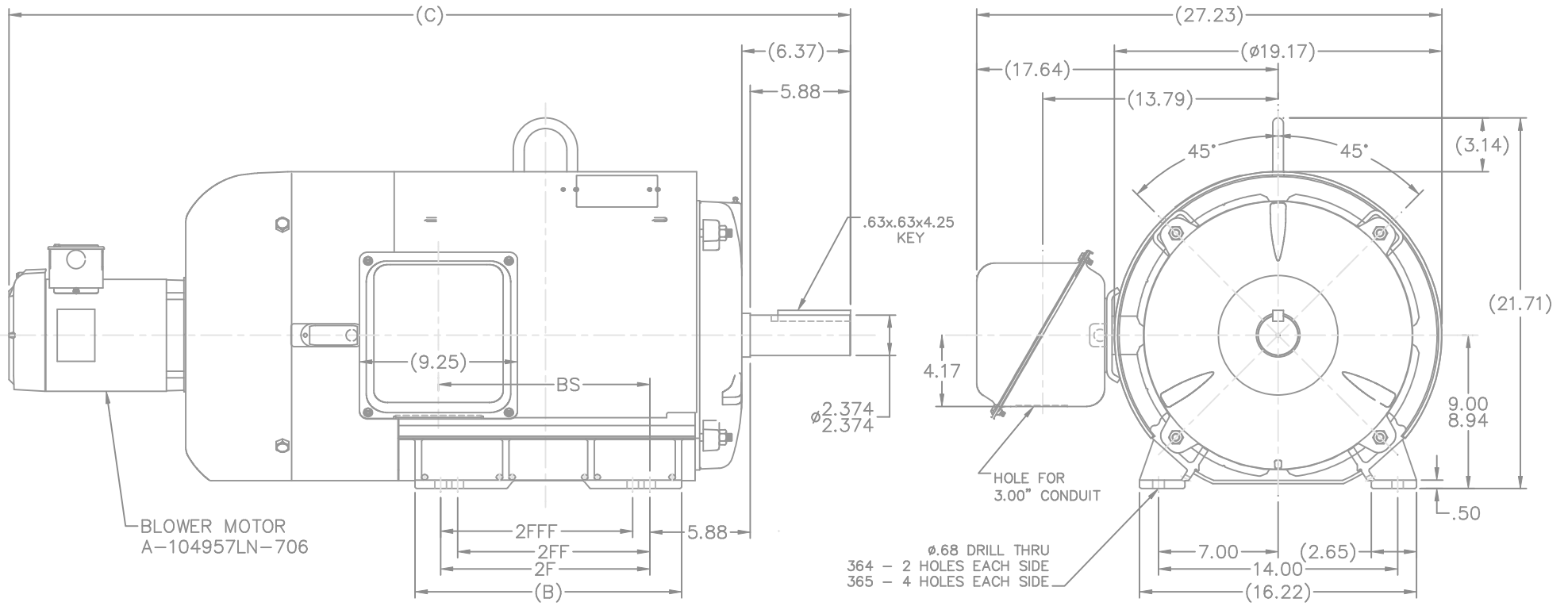
Regal and are trademarks of Regal Rexnord Corporation or one of its affiliated companies.
©2022 Regal Rexnord Corporation, All Rights Reserved. MC017097E

Nameplate Specifications

Output HP	60 Hp	Output KW	45.0 kW
Frequency	60 Hz	Voltage	230/460 V
Current	146.0/73.0 A	Speed	1785 rpm
Service Factor	1	Phase	3
Efficiency	93 %	Power Factor	82
Duty	Continuous	Insulation Class	F
Design Code	INV	KVA Code	G
Frame	364T	Enclosure	Totally Enclosed Blower cooled - Axial
Thermal Protection	Thermostat	Ambient Temperature	40 °C
Drive End Bearing Size	6313	Opp Drive End Bearing Size	6311
UL	Recognized	CSA	Y
CE	Y	IP Code	43
Number of Speeds	1		

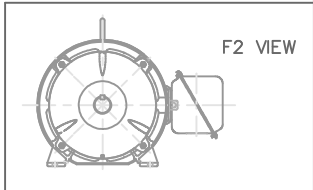
Technical Specifications

Electrical Type	Squirrel Cage Inverter Duty	Starting Method	Inverter Only
Poles	4	Rotation	Reversible
Resistance Main	.11 Ohms	Mounting	Rigid Base
Motor Orientation	Horizontal	Drive End Bearing	Ball
Opp Drive End Bearing	Ball	Frame Material	Rolled Steel
Shaft Type	T	Overall Length	48.29 in
Frame Length	16.70 in	Shaft Diameter	2.375 in
Shaft Extension	5.88 in	Assembly/Box Mounting	F1/F2 CAPABLE
Inverter Load	CONSTANT 2000:1		
Connection Drawing	EE7308AD	Outline Drawing	XH2B1SS1J-1670



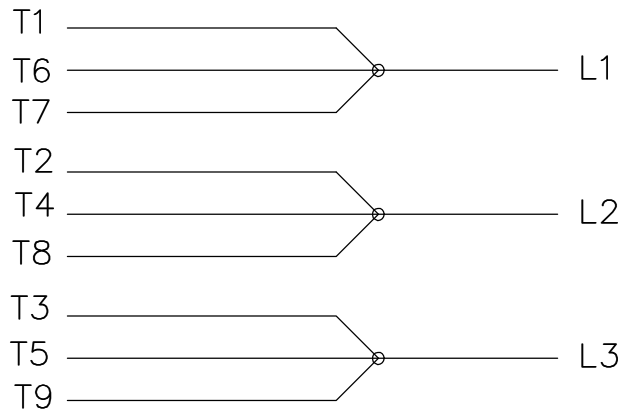
BLOWER MOTOR
A-104957LN-706

- NOTES:
1. CONDUIT BOX CAN BE ROTATED IN 90° STEPS.
2. NAMEPLATES TO BE READ FROM CONDUIT BOX SIDE OF MOTOR.

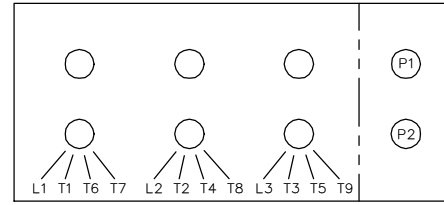


								TOLERANCES UNLESS SPECIFIED		REGAL-BELOIT Motor Technologies Group		DRAWN CTO 10-31-2002						
								DEC.	INCHES			CHK	ML	11-01-2002				
								.X	±.1			APPD	HNH	11-04-2002				
								.XX	±.03	TITLE OUTLINE NEMA MOTORS		SCALE	1=5.75					
								.XXX	±.005	360T FR. - TEBC UE1		REF						
								.XXXX	±.0005	MAT'L		FMF						
								CHK	ANG	±7'30"		PREV						
								RFP			CAD FILE	xh2b1ss1j		SIZE	DRAWING NO.	PAGE	OF	REV.
								DIST	BY		B	XH2B1SS1J		2				
DASH	FRAME	C	BS	B	2F	2FF	2FFF											
1670	364T	48.29	11.56	14.61	11.25													
1770	365T	49.29	12.56	15.61	12.25	11.25	11.25											
2								REVISED BLOWER MOTOR PER CN 31970	CTO 01-28-2003	HNH	.XXX	±.005						
1								NEW DRAWING	MU44106	CTO 11-04-2002	HNH	.XXXX	±.0005					
NO.								REVISION	BY & DATE	CHK	ANG	±7'30"						
THIS DRAWING IN DESIGN AND DETAIL IS OUR PROPERTY AND MUST NOT BE USED EXCEPT IN CONNECTION WITH OUR WORK ALL RIGHTS OF DESIGN AND INVENTION ARE RESERVED THIS IS AN ELECTRONICALLY GENERATED DOCUMENT - DO NOT SCALE THIS PRINT																		

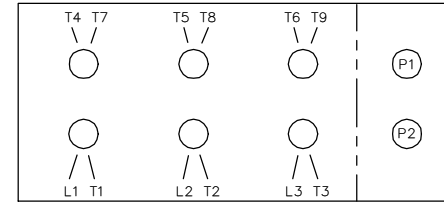
LOW VOLTAGE



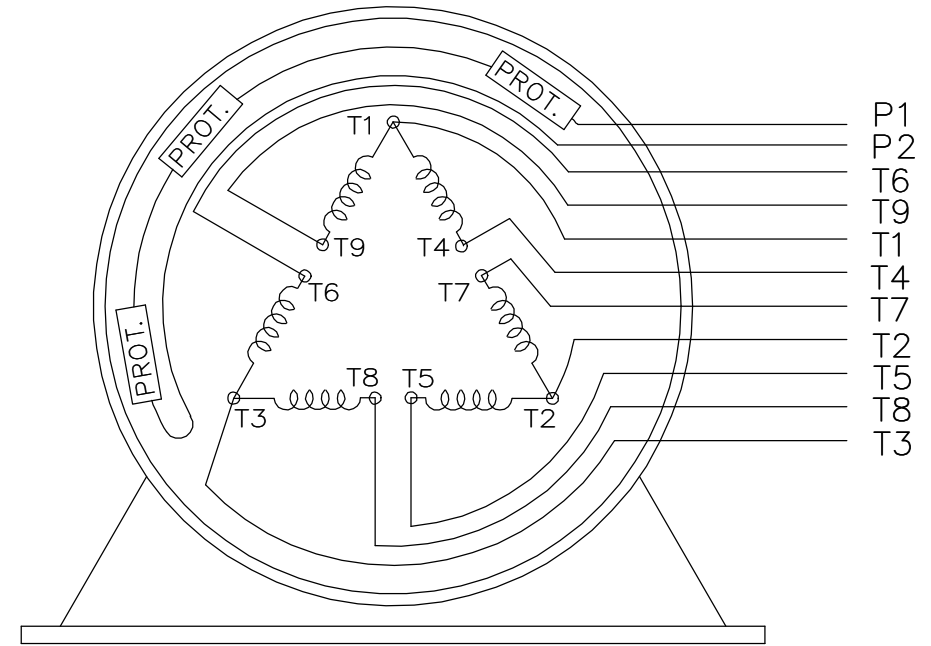
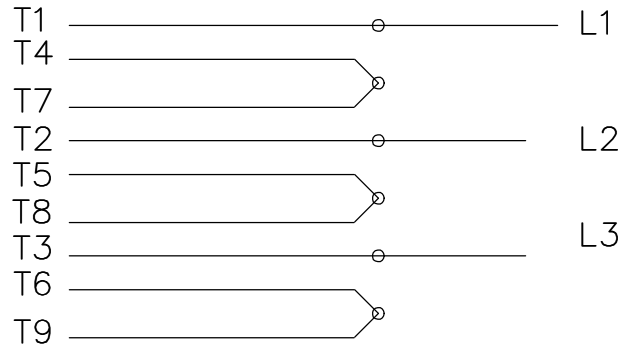
LOW VOLTAGE



HIGH VOLTAGE



HIGH VOLTAGE



VIEW OF TERMINAL END

WHEN MORE THAN ONE PROT. IS USED; PROT. ARE CONNECTED IN SERIES

DRAWING REVISION L	REVISION BY JP	REV DATE/© DATE 06-21-2019	TOLERANCES (EXCEPT AS NOTED): DEC. INCH mm ANGLE .X ±0.1 [±3] ±7' 30" .XX ±0.02 [±0.5] .XXX ±0.005 [±0.13] .XXXX ±0.0005 [±0.013]	DRAWN BY MJD	Regal Beloit America, Inc.
ECO ECO-0168744	APPROVED BY MH	DATE 06-21-2019		DATE 12-19-1997	
ECO DESCRIPTION UPDATED TO CURRENT STANDARDS			REMOVE BURRS & BREAK SHARP EDGES: .003/.015 [.08/.38] X 45° CORNER FILLETS: R.02 [.5] MACHINED SURFACES: 200/ 5.1 INCH/mm	APPROVED BY GK	DESCRIPTION CONN DIAGRAM-EXTERNAL
COPYRIGHT (PER REVISION DATE) REGAL BELOIT AMERICA, INC. ALL RIGHTS RESERVED. PROPRIETARY AND CONFIDENTIAL INFORMATION - THIS DOCUMENT IS THE PROPERTY OF REGAL BELOIT AMERICA, INC. ("OWNER") AND CONTAINS OWNER'S PROPRIETARY INFORMATION. ANY PERSON, CORPORATION OR OTHER FIRM RECEIVING IT IS DEEMED, BY RECEIVING IT, TO AGREE THAT IT, AND/OR ANY PART OF IT, SHALL NOT BE DISCLOSED TO ANY PERSON, CORPORATION OR OTHER ENTITY, DUPLICATED, AND/OR USED, EXCEPT AS EXPRESSLY APPROVED IN WRITING IN ADVANCE BY OWNER. THIS DOCUMENT SHALL BE RETURNED TO OWNER UPON REQUEST. IT MAY BE SUBJECT TO CERTAIN RESTRICTIONS UNDER APPLICABLE EXPORT CONTROL LAWS AND REGULATIONS.			THIRD ANGLE PROJECTION	MATERIAL	PROCESS/FINISH
			SIZE A	DRAWING NUMBER EE7308AD	SHEET 1 OF 1



1051 CHEYENNE AVE.
GRAFTON, WI 53024
PH. 262-277-8810

DATA VOLTS: 460

CERTIFICATION DATA SHEET

CONN. DIAGRAM: A-EE7308AA-LN
OUTLINE: XH2B1SS1J-1670
WINDING: C3644022

CAT #: LM03377

NONE 1

TYPICAL MOTOR PERFORMANCE DATA

HP	KW	SYNC RPM	FL RPM	FRAME	ENCLOSURE	TYPE	KVA CODE	DESIGN
60	45	1800	1785	364T	TEBC	TBR	G	INF

PH	HZ	VOLTS	AMPS	START TYPE	DUTY	INSL	S.F.	AMB	ELEV.
3	60	230/460	146/73	Y START D RUN OR INV	CONT	F	1.15	40	3300

F.L. EFF	93.0	3/4 LD EFF	92.4	1/2 LD EFF	91.0	GTD EFF	ELECT. TYPE
F.L. PF	82.0	3/4 LD PF	78.0	1/2 LD PF	68.5	92.4	SQ CAGE INV DUTY

F.L. TORQUE	LR AMPS @ 460 V	L.R. TORQUE	B.D. TORQUE	F.L. RISE (° C)
177 LB-FT	435	195 LB-FT 110%	525 LB-FT 297%	55

PRESSURE @ 3	SOUND	POWER	ROTOR WK²	MAX. LOAD WK²	SAFE STALL TIME	STARTS/HOUR	MOTOR WGT
999 dBA	1008 dBA		0.00 LB-FT²	0 LB-FT²	0 SEC.	0	0 LB.

***** SUPPLEMENTAL INFORMATION *****

DE BRACKET TYPE	ODE BRACKET TYPE	MOUNT TYPE	MOTOR ORIENTATION	SEVERE DUTY	HAZARDOUS LOCATION	DRIP COVER	SCREENS	PAINT
STANDARD	ENCODER	RIGID	HORIZONTAL	NO	NONE	NO	NONE	WATTSAVER

BEARINGS		GREASE	SHAFT TYPE	SPECIAL DE	SPECIAL ODE	SHAFT MATERIAL	FRAME MATERIAL
DE	ODE	POLYREX EM	T	NONE	NONE	1144 STRESSPROOF (C-223)	ROLLED STEEL
BALL	BALL						
6313	6311						

THERMOSTATS	PROTECTORS	WDG RTD's	BRG RTD's	THERMISTORS	CONTROL	SPACE HEATERS
TSTATS (N/C)	NOT	NONE	NONE	NONE	FALSE	NA

R1 (ohms/ph)	R2 (ohms/ph)	X1 (ohms/ph)	X2 (ohms/ph)	Xm (ohms/ph)	VIBRATION (in/sec)	FLOAT
0.066	0.028	0.371	0.404	9.224	0.150	ODE

* N O T E S *	INVERTER TORQUE: CONSTANT 2000:1 INV. HP SPEED RANGE: NONE	
	ENCODER: DYNAPAR HSD38 C BOX W/TERM STRIP 1024 PPR	
	BRAKE: NONE NONE NONE	
	FT-LB: NA VOLTAGE: NONE HZ:	
	UL: V-INS, CONST UL REC	

DATE: 9/10/2018

Data Sheet

Date: 9/10/2018

LM03377



Data @ **460 V**

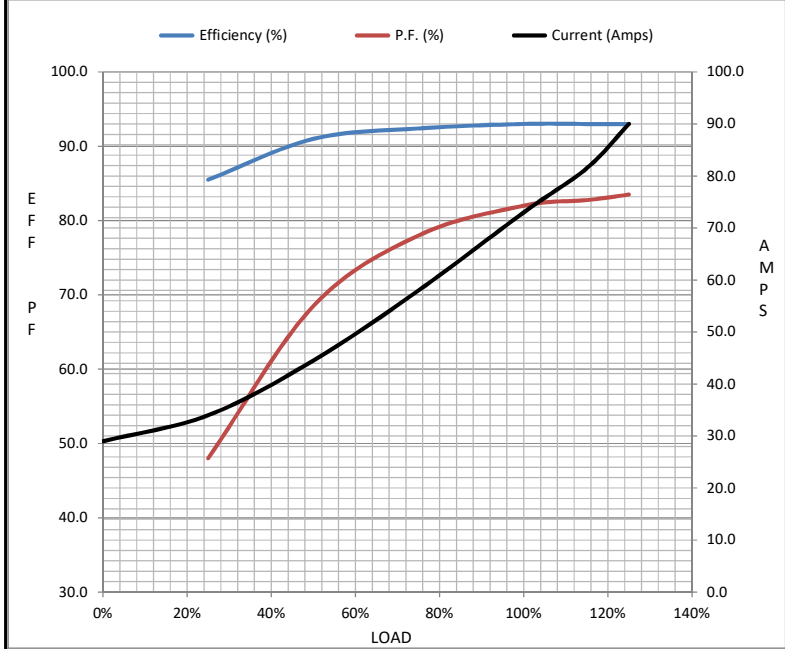
Motor Load Data

Load	0%	25%	50%	75%	100%	115%	125%	LR
Current (Amps)	29.0	34.0	44.5	58.0	73.0	81.5	90.0	435
Torque (ft-lb)	0.00	44.0	88.0	132	177	200	222	195
RPM	1800	1795	1792	1788	1785	1,782	1778	0
Efficiency (%)		85.5	91.0	92.4	93.0	93.0	93.0	
P.F. (%)	7.0	48.0	68.5	78.0	82.0	82.8	83.5	23.0

Motor Speed Data

	LR	Pull-Up	BD	Rated	Idle
Speed (RPM)	0	900	1700	1785	1800
Current (Amps)	435	425	305	73.0	29.0
Torque (ft-lb)	195	140	525	177	0.00

Information Block				
HP	60.0			
Sync. RPM	1800			
Frame	364			
Enclosure	TEBC			
Construction	TBR			
Voltage	230/460 V			
Frequency	60 Hz			
Design	B			
LR Code letter	G			
Service Factor	1.15			
Temp Rise @ FL	55 ° C			
Duty	CONT			
Ambient	40 ° C			
Elevation	1,000 feet			
Rotor/Shaft wk ²	0.00 Lb-Ft ²			
Ref Wdg	C3644022 NONE			
Sound Pressure @ 1M	999 dBA			
VFD Rating	CONSTANT 2000:1			
Outline Dwg	XH2B1SS1J-1670			
Conn. Diag	A-EE7308AA-LN			
Additional Specifications:				
0				
0				
EQUIV CKT (OHMS / PHASE)				
R1	R2	X1	X2	Xm
0.0660	0.0280	0.3710	0.4040	9.2240



Speed - Torque Curve

