

PRODUCT INFORMATION PACKET

Model No: K320M2

Catalog No: K320M2

Crop Dryer Motor, 7.5 HP, 1 Ph, 60 Hz, 200-230 V, 3600 RPM, 215TZ Frame, ODP



Regal and are trademarks of Regal Rexnord Corporation or one of its affiliated companies.
©2022 Regal Rexnord Corporation, All Rights Reserved. MC017097E

Nameplate Specifications

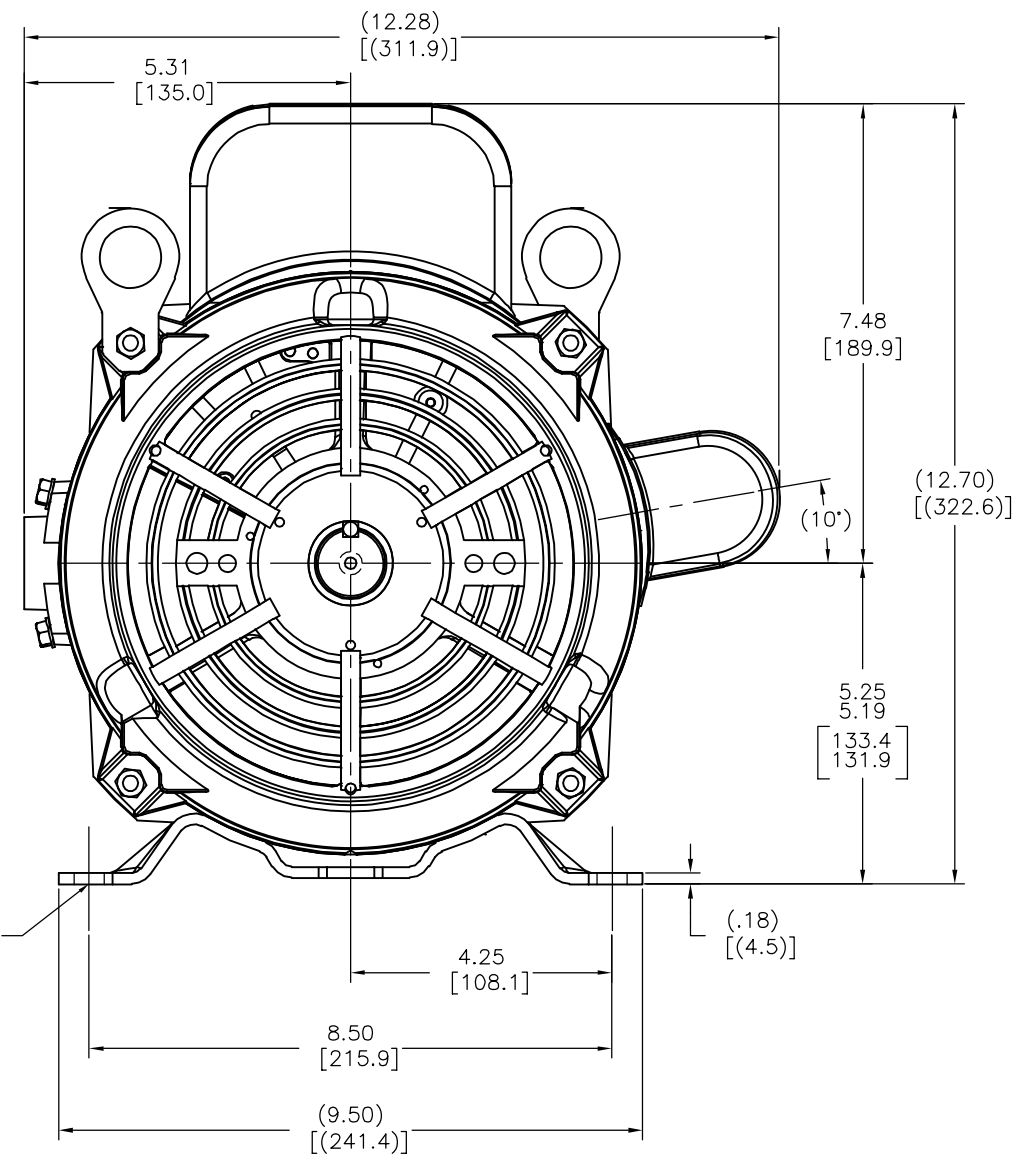
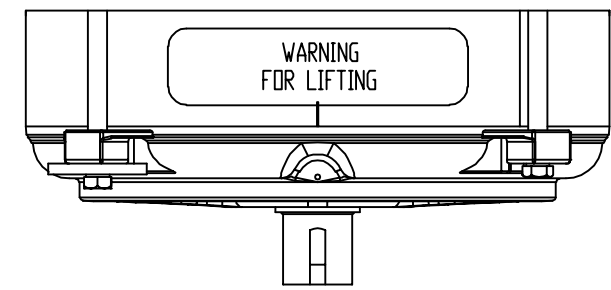
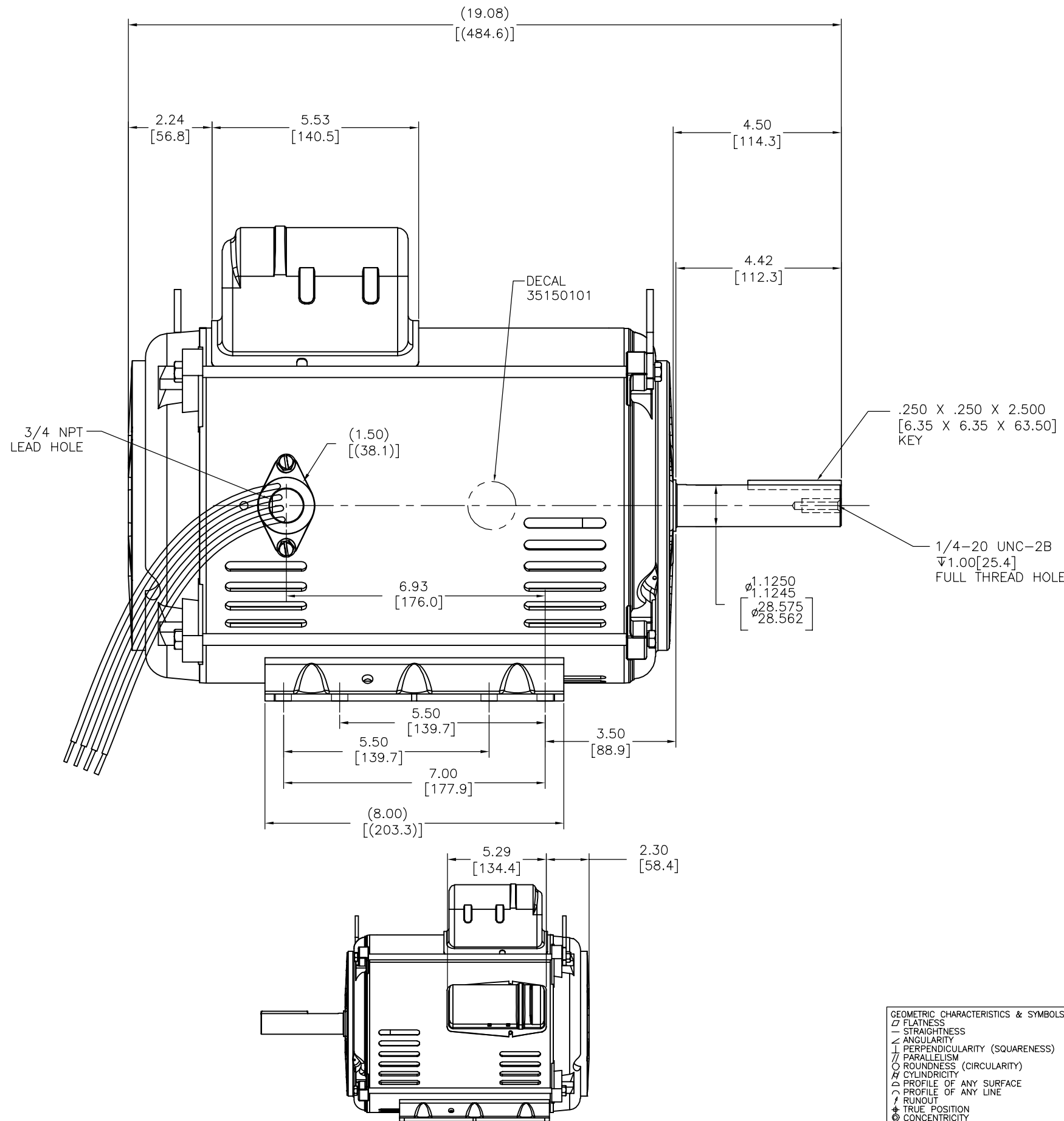
Output HP	7.5 Hp	Output KW	5.6 kW
Frequency	60 Hz	Voltage	200-230 V
Current	32.5-40 A	Speed	3535 rpm
Service Factor	1	Phase	1
Duty	Continuous Air Over	Insulation Class	F
Frame	215TZ	Enclosure	Open Drip Proof
Thermal Protection	No Protection	Ambient Temperature	50 °C
UL	Recognized	CSA	Y
CE	N	Number of Speeds	1

Technical Specifications

Electrical Type	DC Permanent Magnet	Starting Method	Across The Line
Poles	2	Rotation	Selective Counterclockwise
Mounting	Rigid Base	Drive End Bearing	Ball
Opp Drive End Bearing	Ball	Frame Material	Rolled Steel
Shaft Type	Keyed	Overall Length	19.08 in
Frame Length	11.15 in	Shaft Diameter	1.125 in
Shaft Extension	4.50 in		
Outline Drawing	K320M2-S01	Connection Drawing	EE9022PQ-CY

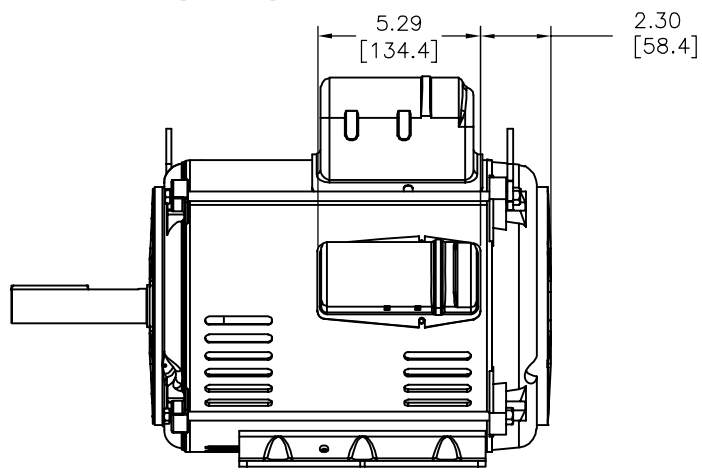
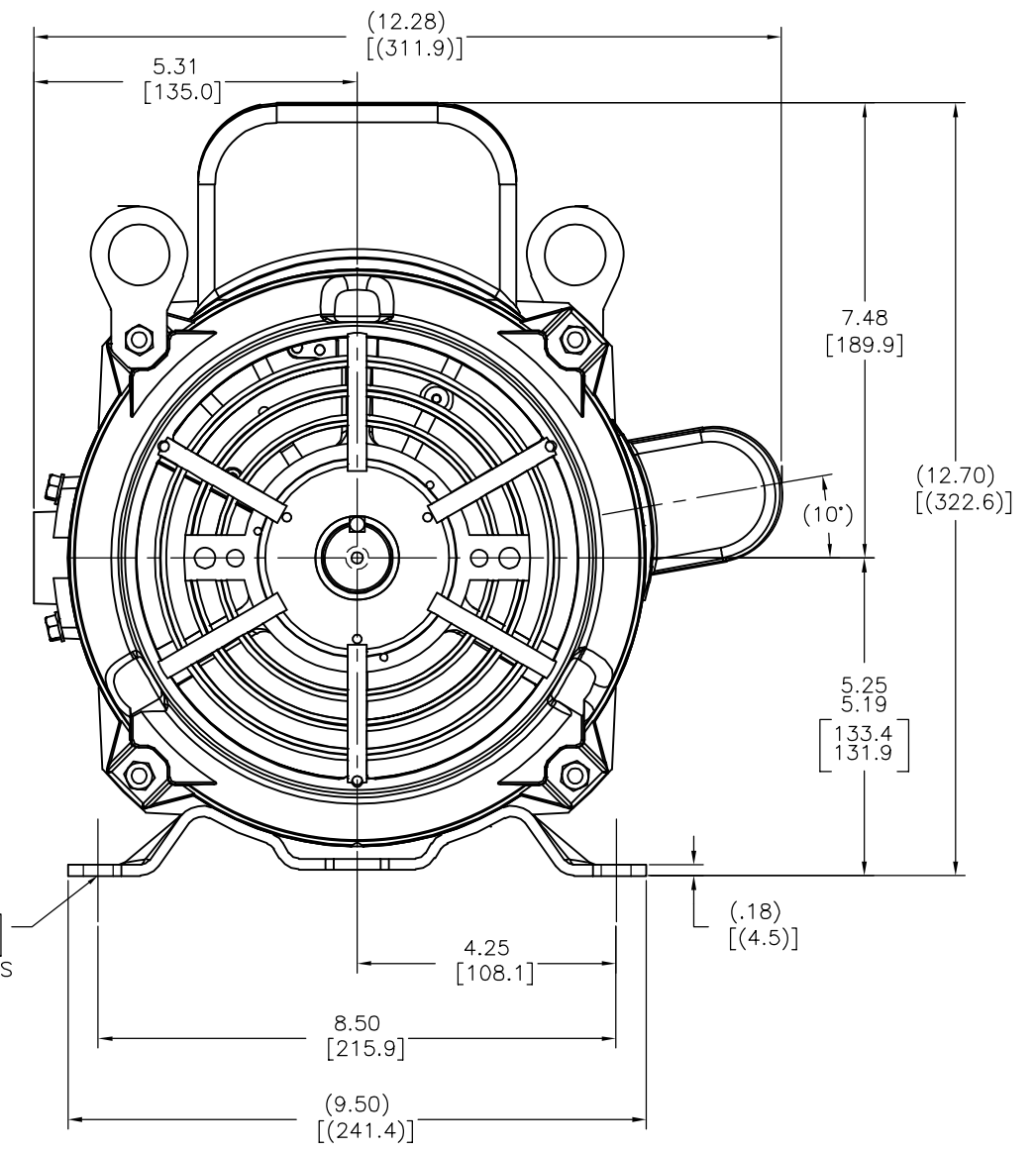
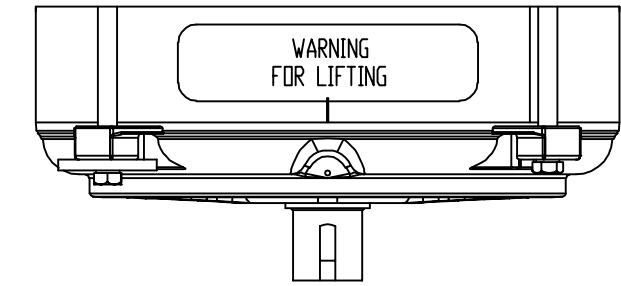
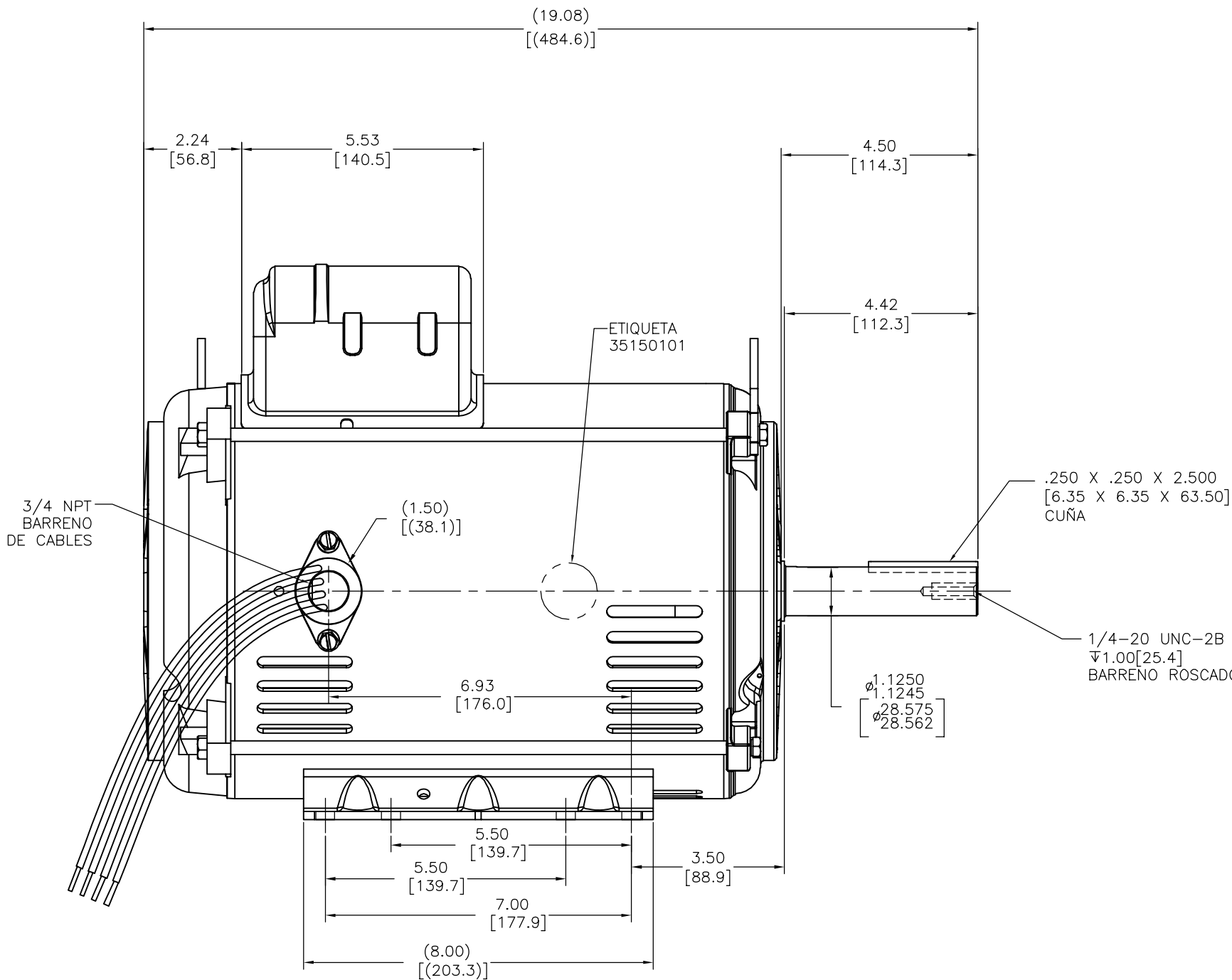
This is an uncontrolled document once printed or downloaded and is subject to change without notice. Date Created:09/08/2022

REV	ECO	REV BY	DATE	APPD	DATE
A	0030019	I.LOPEZ	01-23-2013	H.SANCHEZ	01-23-2013



GEOMETRIC CHARACTERISTICS & SYMBOLS ▭ FLATNESS — STRAIGHTNESS ∠ ANGULARITY ⊥ PERPENDICULARITY (SQUARENESS) // PARALLELISM ○ ROUNDNESS (CIRCULARITY) ⌀ CYLINDRICITY △ PROFILE OF ANY SURFACE ∩ PROFILE OF ANY LINE ⌒ RUNOUT ⊕ TRUE POSITION ◎ CONCENTRICITY = SYMMETRY	UNLESS OTHERWISE SPECIFIED DIM. TOLERANCES ARE AS FOLLOWS: INCH X XX XXX XXXX mm ±0.5 ±0.13 ±0.013 ANG. ±.50 DEG REMOVE BURRS & BREAK SHARP EDGES: INCH .003-.015 mm 0.1-0.4 CORNER FILLETS TO: INCH .020 mm 0.5 MACHINE SURFACES: INCH 125 mm 3.2	DR BY: I.LOPEZ	01-23-2013	REGAL BELOIT CORPORATION DESCRIPTION MODEL-IHP OUTLINE SIZE D DWG NO K320M2 SCALE NONE SHEET 1
		APPD: D.JAMORA	01-23-2013	
		THIRD ANGLE PROJECTION	EDS DATE 11-11-2011 FORMAT REV H	
CONFIDENTIAL: THIS DRAWING AND ITS INFORMATION ARE THE EXCLUSIVE AND CONFIDENTIAL PROPERTY OF REGAL-BELOIT CORPORATION AND ARE NOT TO BE DISCLOSED, DUPLICATED, DISTRIBUTED OR OTHERWISE USED WITHOUT THE WRITTEN CONSENT OF REGAL-BELOIT CORPORATION. ALL RIGHTS RESERVED.				

REVISION: ECO	REVISADO POR: I.LOPEZ	FECHA: 01-23-2013	APROBADO POR: H.SANCHEZ	FECHA: 01-23-2013
A	0030019			



CARACTERISTICAS DE GEOMETRIA Y SIMBOLOS: ▽ PLANICIDAD - RECTITUD ∠ ANGULARIDAD ⊥ PERPENDICULARIDAD (A ESCUADRA) // PARALELISMO ○ REDONDEZ (CIRCULARIDAD) H CILINDRICIDAD ≡ PERFIL DE CUALQUIER SUPERFICIE ^ PERFIL DE CUALQUIER LINEA † VARIACION ⊕ POSICION REAL ⊙ CONCENTRICIDAD = SIMETRIA	A MENOS QUE SE ESPECIFIQUE DE OTRA MANERA, LAS TOLERANCIAS DE LAS DIMS, SON LAS SIGUIENTES: PULG. X XX XXX XXXX mm ±0.5 ±0.13 ±0.013 ELIMINAR REBABAS Y ORILLAS FILOSAS DEL BORDE. PULG. .003-.015 mm 0.1-0.4 FILETEAR ESQUINA: PULG. .020 mm 0.5 MAQUINAR SUPERFICIES PULG. 125 mm 3.2 DIMS METRICAS MOSTRADAS [PARENTESIS]	DIBUJADO POR: I.LOPEZ	01-23-2013	REGAL-BELOIT CORPORATION DESCRIPCION: MODEL-IHP OUTLINE TAMANO: D NUMERO DE DIBUJO: K320M2 ESCALA: NONE HOJA: 1
		APROBADO POR: D.JAMORA	01-23-2013	