

PRODUCT INFORMATION PACKET



Model No: K312M2
Catalog No: K312M2

General Purpose Farm Duty Motor, 10.0 HP, 1 Ph, 60 Hz, 230 V, 1800 RPM, F215T Frame, TEFC



Regal and Century are trademarks of Regal Rexnord Corporation or one of its affiliated companies.
©2023 Regal Rexnord Corporation, All Rights Reserved. MC017097E





Nameplate Specifications

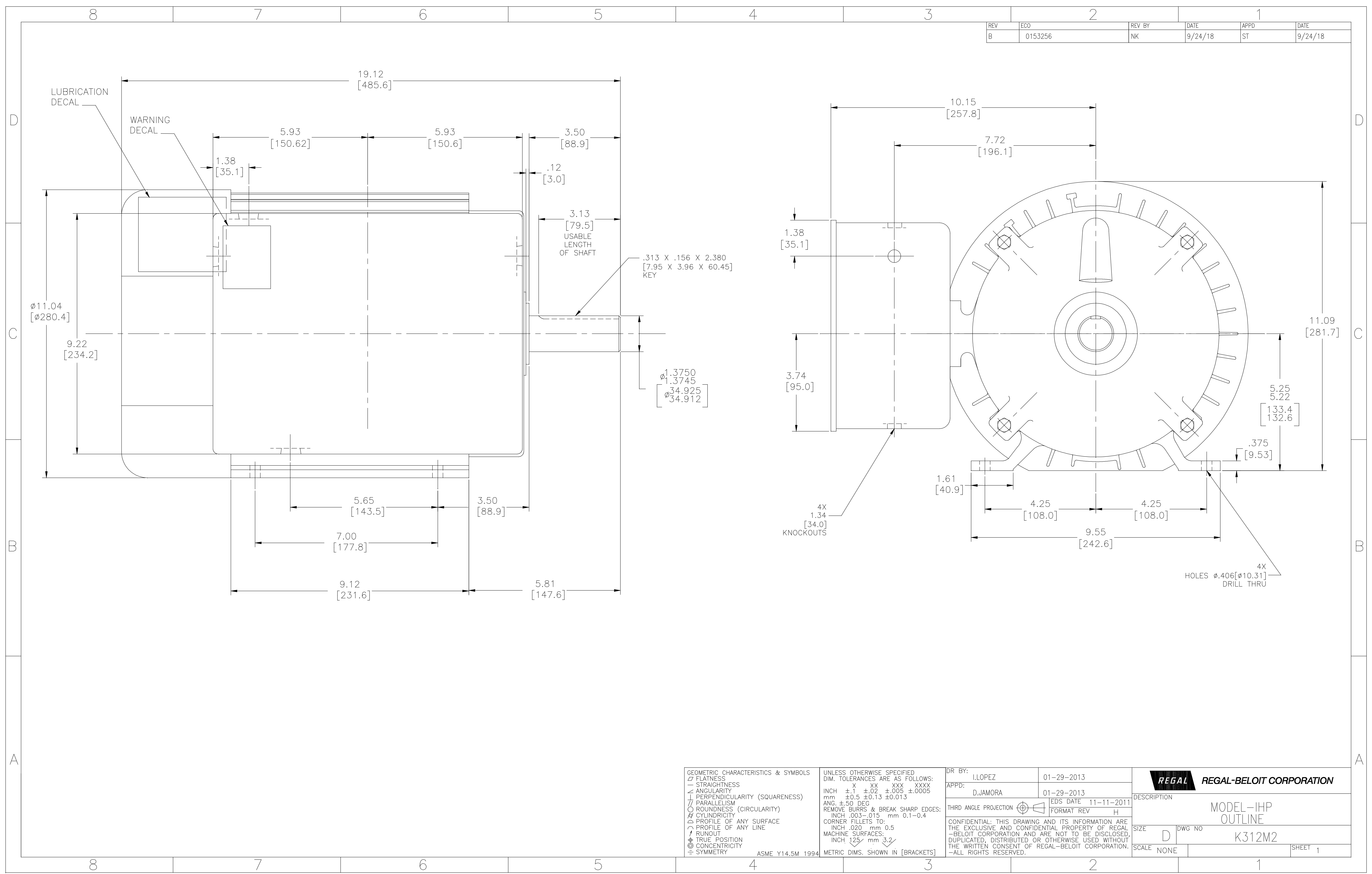
Phase	1	Output HP	10.0 Hp
Output KW	7.5 kW	Voltage	230 V
Speed	1750 rpm	Service Factor	1
Frame	F215T	Enclosure	Totally Enclosed Fan Cooled
Thermal Protection	No Protection	Efficiency	87.5 %
Ambient Temperature	40 °C	Frequency	60 Hz
Current	38.0 A	Duty	Continuous
Insulation Class	F	UL	Recognized
CSA	Y	CE	N
Number of Speeds	1		

Technical Specifications

Electrical Type	Capacitor Start, Capacitor Run, Single Or Dual Voltage	Starting Method	Across The Line
Poles	4	Rotation	Reversible
Mounting	Rigid Base	Drive End Bearing	Ball
Opp Drive End Bearing	Ball	Frame Material	Rolled Steel
Shaft Type	Keyed	Overall Length	19.12 in
Frame Length	9.00 in	Shaft Diameter	1.375 in
Shaft Extension	3.50 in		
Outline Drawing	K312M2-S01	Connection Drawing	80022849.PCX

This is an uncontrolled document once printed or downloaded and is subject to change without notice. Date Created:09/06/2023

REV	ECO	REV BY	DATE	APPD	DATE
B	0153256	NK	9/24/18	ST	9/24/18



GEOMETRIC CHARACTERISTICS & SYMBOLS
 — FLATNESS
 — STRAIGHTNESS
 — ANGULARITY
 ⊥ PERPENDICULARITY (SQUARENESS)
 // PARALLELISM
 ○ ROUNDNESS (CIRCULARITY)
 ⌀ CYLINDRICITY
 △ PROFILE OF ANY SURFACE
 ∩ PROFILE OF ANY LINE
 ↗ RUNOUT
 ⊕ TRUE POSITION
 ⊙ CONCENTRICITY
 = SYMMETRY

UNLESS OTHERWISE SPECIFIED
 DIM. TOLERANCES ARE AS FOLLOWS:
 INCH X XX XXX XXXX
 INCH ±.1 ±.02 ±.005 ±.0005
 mm ±0.5 ±0.13 ±0.013
 ANG. ±.50 DEG
 REMOVE BURRS & BREAK SHARP EDGES:
 INCH .003-.015 mm 0.1-0.4
 CORNER FILLETS TO:
 INCH .020 mm 0.5
 MACHINE SURFACES:
 INCH 125 mm 3.2

DR BY: I.LOPEZ 01-29-2013
 APPD: D.JAMORA 01-29-2013
 THIRDS ANGLE PROJECTION
 EDS DATE 11-11-2011
 FORMAT REV H

REGAL REGAL-BELOIT CORPORATION
 DESCRIPTION: MODEL-IHP OUTLINE
 SIZE: D DWG NO: K312M2
 SCALE: NONE SHEET: 1

ASME Y14.5M 1994

METRIC DIMS. SHOWN IN [BRACKETS]

CONFIDENTIAL: THIS DRAWING AND ITS INFORMATION ARE THE EXCLUSIVE AND CONFIDENTIAL PROPERTY OF REGAL-BELOIT CORPORATION AND ARE NOT TO BE DISCLOSED, DUPLICATED, DISTRIBUTED OR OTHERWISE USED WITHOUT THE WRITTEN CONSENT OF REGAL-BELOIT CORPORATION. ALL RIGHTS RESERVED.