

# PRODUCT INFORMATION PACKET

Model No: K305M2

Catalog No: K305M2

General Purpose Motors, TEFC, 7.5 HP, 1 Ph, 60 Hz, 230/460 V, 1750 RPM, F215T



Regal and are trademarks of Regal Rexnord Corporation or one of its affiliated companies.  
©2022 Regal Rexnord Corporation, All Rights Reserved. MC017097E

### Nameplate Specifications

Output HP	7.5 Hp	Output KW	5.6 kW
Frequency	60 Hz	Voltage	230/460 V
Current	34.0/17.0 A	Speed	1750 rpm
Service Factor	1	Phase	1
Duty	Continuous	Insulation Class	B
Frame	F215T	Enclosure	Totally Enclosed Fan Cooled
Thermal Protection	None	Ambient Temperature	40 °C
UL	Recognized	CSA	Y
CE	N	Number of Speeds	1

### Technical Specifications

Electrical Type	Capacitor Start, Capacitor Run, Single Or Dual Voltage	Starting Method	Across The Line
Poles	4	Rotation	Reversible
Mounting	Rigid Base	Drive End Bearing	Ball
Opp Drive End Bearing	Ball	Frame Material	Rolled Steel
Shaft Type	Keyed	Overall Length	19.12 in
Frame Length	9.00 in	Shaft Diameter	1.375 in
Shaft Extension	3.5 in		
Connection Drawing	35190601	Outline Drawing	K305M2-S01

This is an uncontrolled document once printed or downloaded and is subject to change without notice. Date Created:05/06/2022

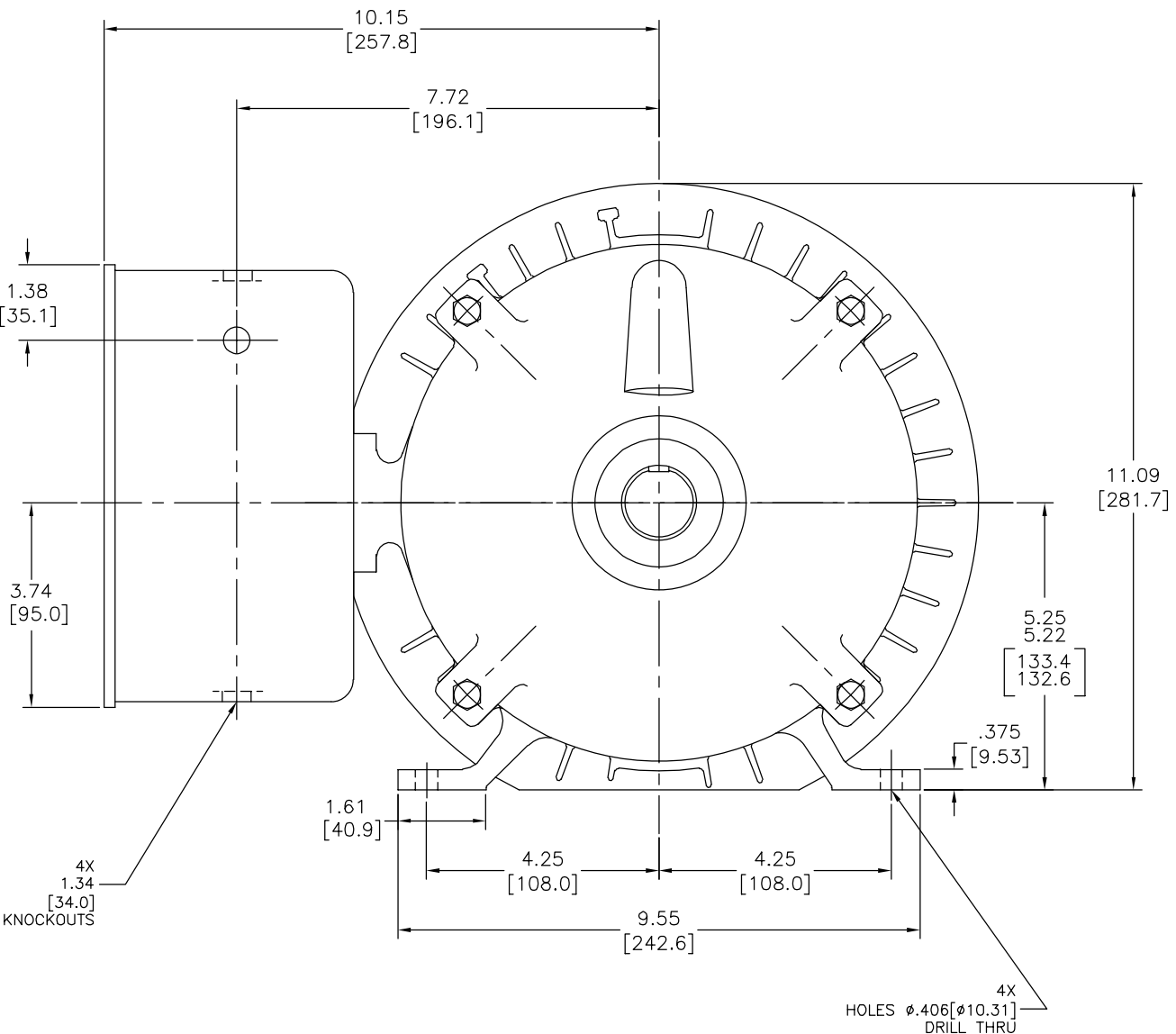
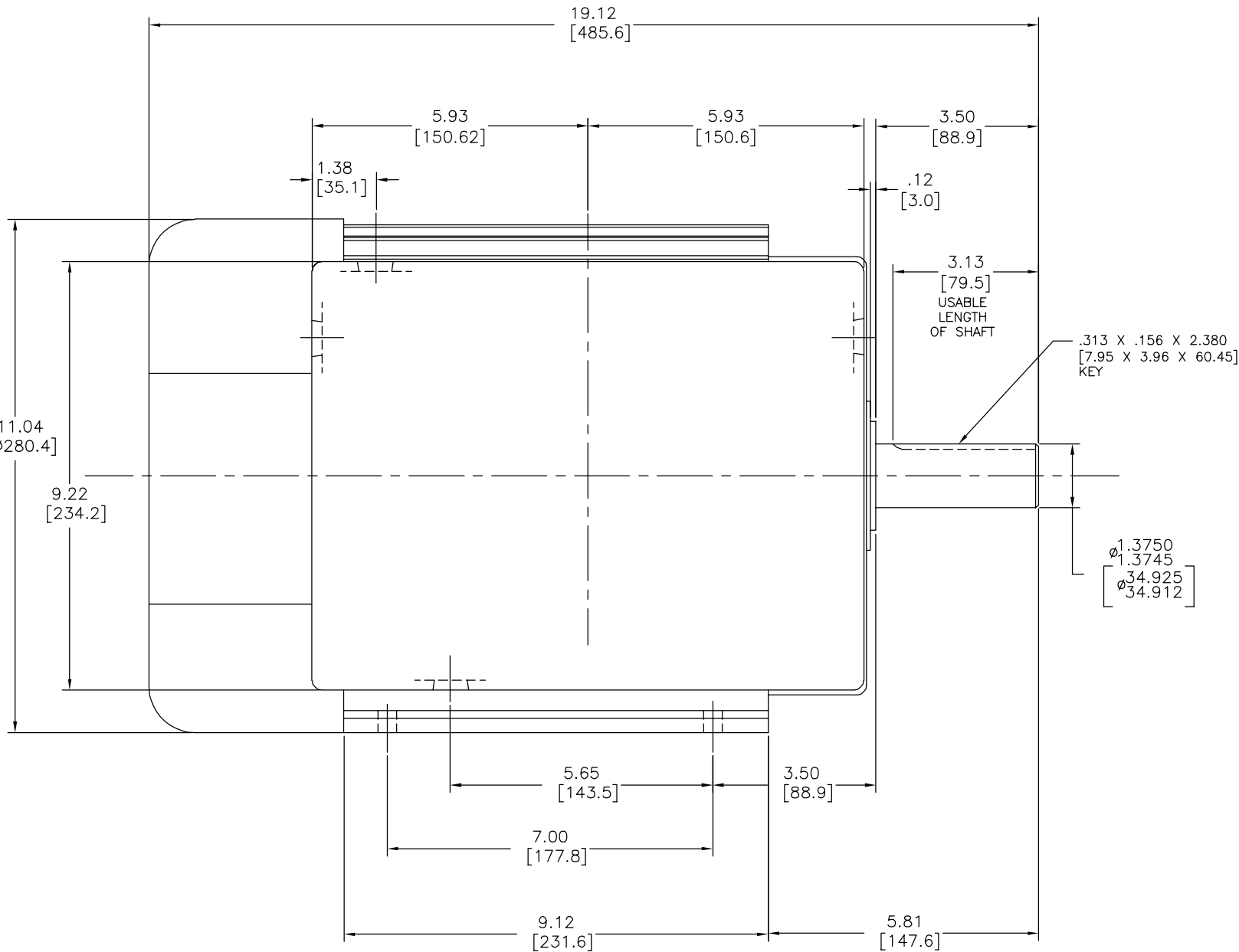
2			1		
REV	ECO	REV BY	DATE	APPD	DATE
A	0030047	I.LOPEZ	01-29-2013	H.SANCHEZ	01-29-2013

D

C

B

A




D

C

B

A

GEOMETRIC CHARACTERISTICS & SYMBOLS — FLATNESS — STRAIGHTNESS — ANGULARITY — PERPENDICULARITY (SQUARENESS) — PARALLELISM — ROUNDNESS (CIRCULARITY) — CYLINDRICITY — PROFILE OF ANY SURFACE — PROFILE OF ANY LINE — TRUE POSITION — CONCENTRICITY — SYMMETRY ASME Y14.5M 1994		UNLESS OTHERWISE SPECIFIED DIM. TOLERANCES ARE AS FOLLOWS: INCH $\begin{matrix} x & xx & xxx & xxxxx \\ \pm .1 & \pm .02 & \pm .005 & \pm .0005 \end{matrix}$ mm $\begin{matrix} \pm 0.5 & \pm 0.13 & \pm 0.013 \end{matrix}$ ANG. $\pm .50$ DEG REMOVE BURRS & BREAK SHARP EDGES: INCH .003-.015 mm 0.1-0.4 CORNER FILLETS TO: INCH .020 mm 0.5 MACHINE SURFACES: INCH 125 mm 3.2 METRIC DIMS. SHOWN IN [BRACKETS]		DR BY: I.LOPEZ 01-29-2013 APPD: D.JAMORA 01-29-2013		<div>REGAL</div> REGAL-BELOIT CORPORATION	
		THIRD ANGLE PROJECTION  EDS DATE 11-11-2011 FORMAT REV H		DESCRIPTION MODEL-IHP OUTLINE			
		CONFIDENTIAL: THIS DRAWING AND ITS INFORMATION ARE THE EXCLUSIVE AND CONFIDENTIAL PROPERTY OF REGAL-BELOIT CORPORATION AND ARE NOT TO BE DISCLOSED, DUPLICATED, DISTRIBUTED OR OTHERWISE USED WITHOUT THE WRITTEN CONSENT OF REGAL-BELOIT CORPORATION. -ALL RIGHTS RESERVED.		SIZE D DWG NO K305M2			
				SCALE NONE		SHEET 1	

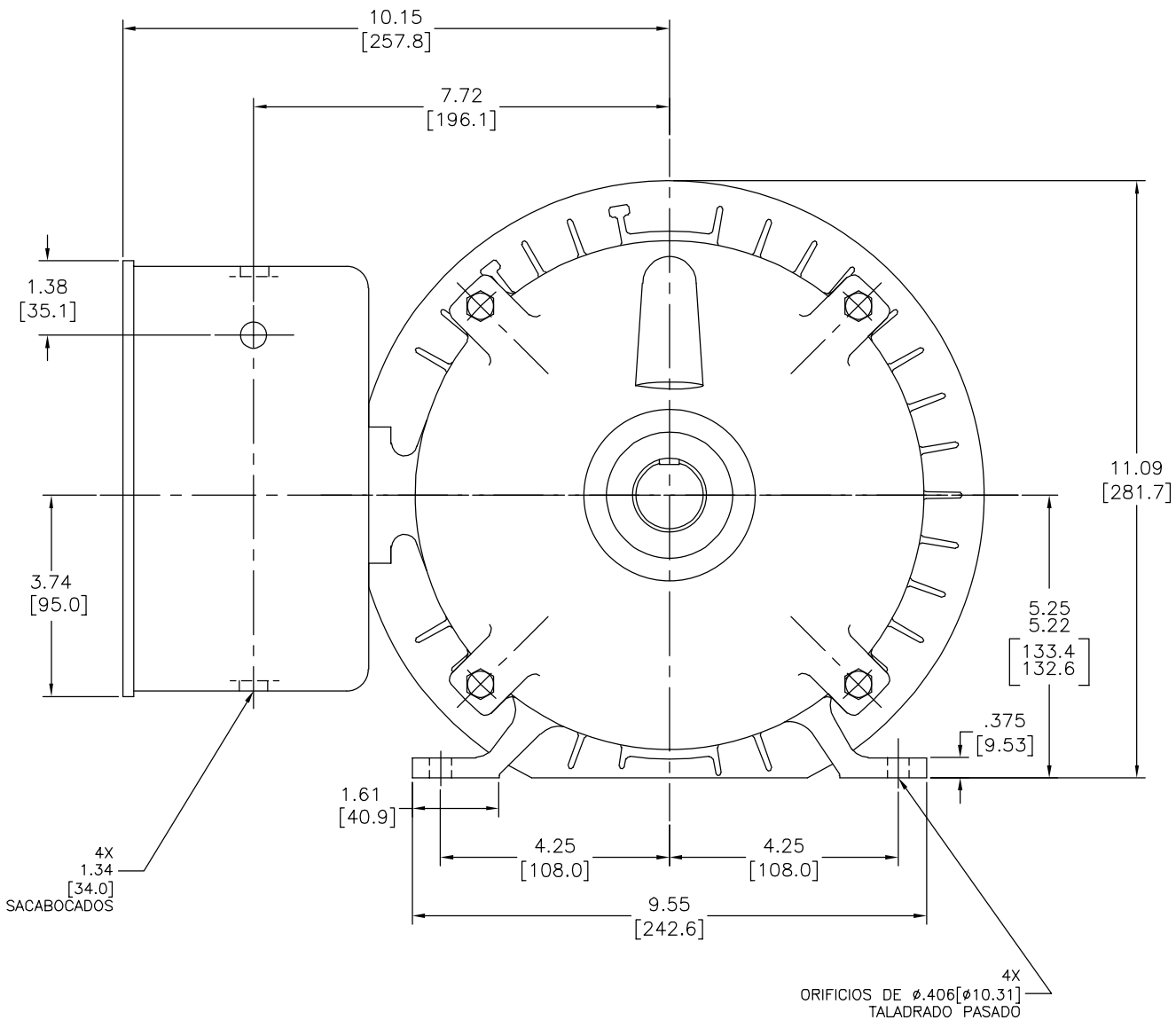
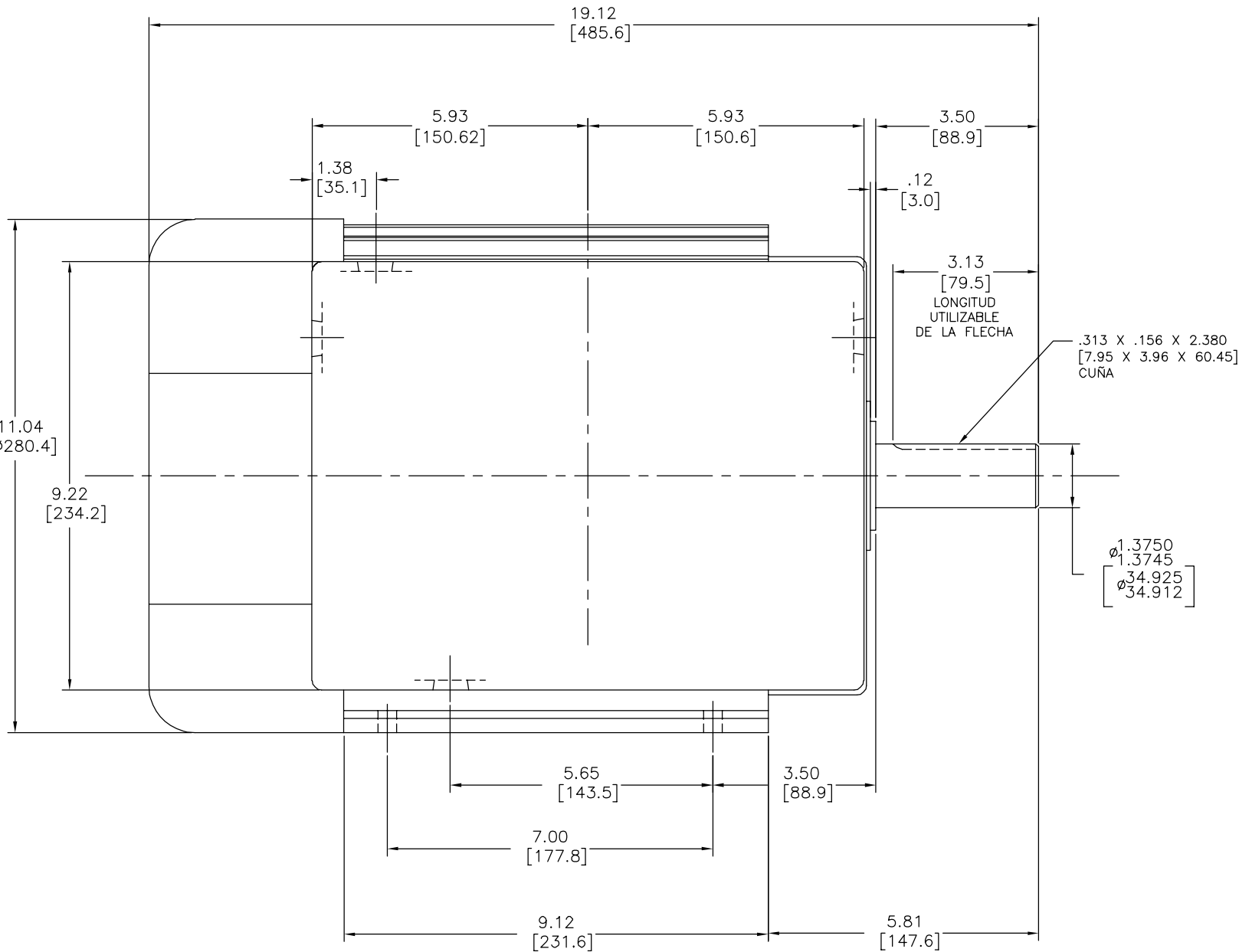
REVISION:	ECO	REVISADO POR:	I.LOPEZ	FECHA:	01-29-2013	APROBADO POR:	H.SANCHEZ	FECHA:	01-29-2013
A	0030047								

D

C

B

A



D

C

B

A

CARACTERISTICAS DE GEOMETRIA Y SIMBOLOS		A MENOS QUE SE ESPECIFIQUE DE OTRA MANERA, LAS TOLERANCIAS DE LAS DIMS, SON LAS SIGUIENTES:		DIBUJADO POR: I.LOPEZ		01-29-2013		REGAL REGAL-BELOIT CORPORATION	
— RECTITUD		PULG. ±.1 ±.02 ±.005 ±.0005		APROBADO POR: D.JAMORA		01-29-2013		DESCRIPCION: MODEL-IHP OUTLINE	
— ANGULARIDAD		mm ±0.5 ±0.13 ±0.013		TERCER ANGULO DE PROYECCION		FECHA EDS: 11-11-2011		TAMAÑO: D	
— PERPENDICULARIDAD (A ESCUADRA)		ANG. ±50 GRADOS		ELIMINAR REBASAS Y ORILLAS FILOSAS DEL BORDE.		REV. FORMATO: H		NUMERO DE DIBUJO: K305M2	
— PARALELISMO		PULG. .003-.015 mm 0.1-0.4		FILETEAR ESQUINA: PULG. .020 mm 0.5		CONFIDENCIAL: ESTE DIBUJO Y SU INFORMACION SON PROPIEDAD DE USO EXCLUSIVO Y CONFIDENCIAL DE REGAL-BELOIT CORPORATION. Y NO DEBERAN SER REVELADOS, DUPLICADOS, DISTRIBUIDOS O USARSE DE OTRA MANERA SIN EL CONSENTIMIENTO ESCRITO DE REGAL-BELOIT CORPORATION. -TODOS LOS DERECHOS RESERVADOS.		ESCALA: NONE	
— REDONDEZ (CIRCULARIDAD)		PULG. 125 mm 3.2		DIMS METRICAS MOSTRADAS [PARENTESIS]				HOJA: 1	
— CILINDRICIDAD									
— PERFIL DE CUALQUIER SUPERFICIE									
— PERFIL DE CUALQUIER LINEA									
— VARIACION									
— POSICION REAL									
— CONCENTRICIDAD									
— SIMETRIA									