

PRODUCT INFORMATION PACKET



Model No: K302M2

Catalog No: K302V1

Farm Rated® General Purpose Farm Duty Motor, 10.0 HP, 1 Ph, 60 Hz, 230 V, 1800 RPM, F215T Frame, TEFC



Regal and Century are trademarks of Regal Rexnord Corporation or one of its affiliated companies.

©2022 Regal Rexnord Corporation, All Rights Reserved. MC017097E





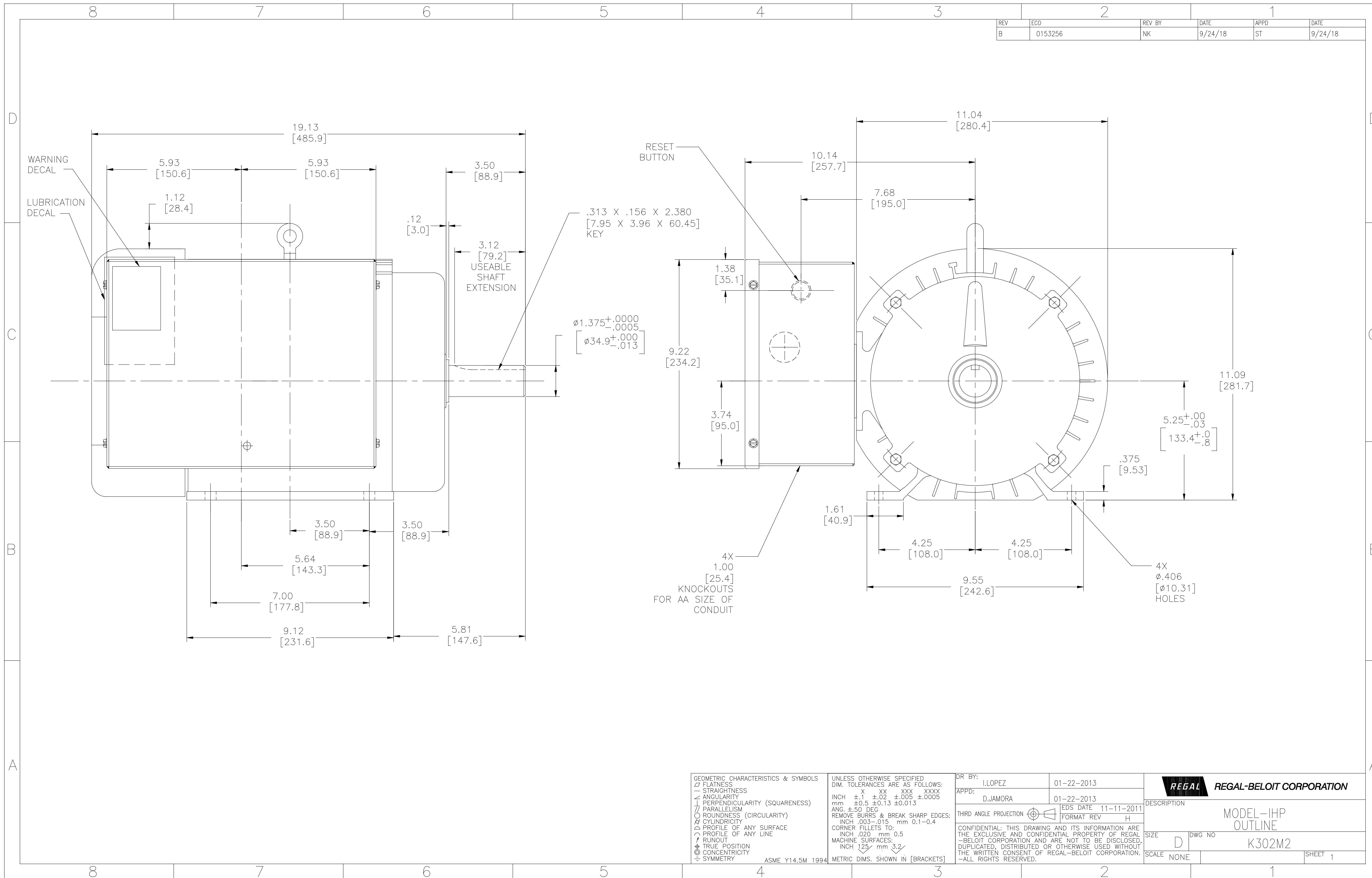
Nameplate Specifications

| | | | |
|--------------------|-------------------|---------------------|------------------------------------|
| Output HP | 10.0 Hp | Output KW | 7.5 kW |
| Frequency | 60 Hz | Voltage | 230 V |
| Current | 39.0 A | Speed | 1730 rpm |
| Service Factor | 1 | Phase | 1 |
| Duty | Continuous | Insulation Class | F |
| Frame | F215T | Enclosure | Totally Enclosed Fan Cooled |
| Thermal Protection | Manual | Ambient Temperature | 40 °C |
| UL | Recognized | CSA | Y |
| CE | N | Number of Speeds | 1 |

Technical Specifications

| | | | |
|-----------------------|--------------------------------------|-------------------|------------------------|
| Electrical Type | Capacitor Start Capacitor Run | Starting Method | Across The Line |
| Poles | 4 | Rotation | Reversible |
| Mounting | Rigid Base | Drive End Bearing | Ball |
| Opp Drive End Bearing | Ball | Frame Material | Aluminium |
| Shaft Type | Keyed | Overall Length | 19.13 in |
| Frame Length | 9.00 in | Shaft Diameter | 1.375 in |
| Shaft Extension | 3.50 in | | |
| Connection Drawing | 35463501 | Outline Drawing | K302M2-S01 |

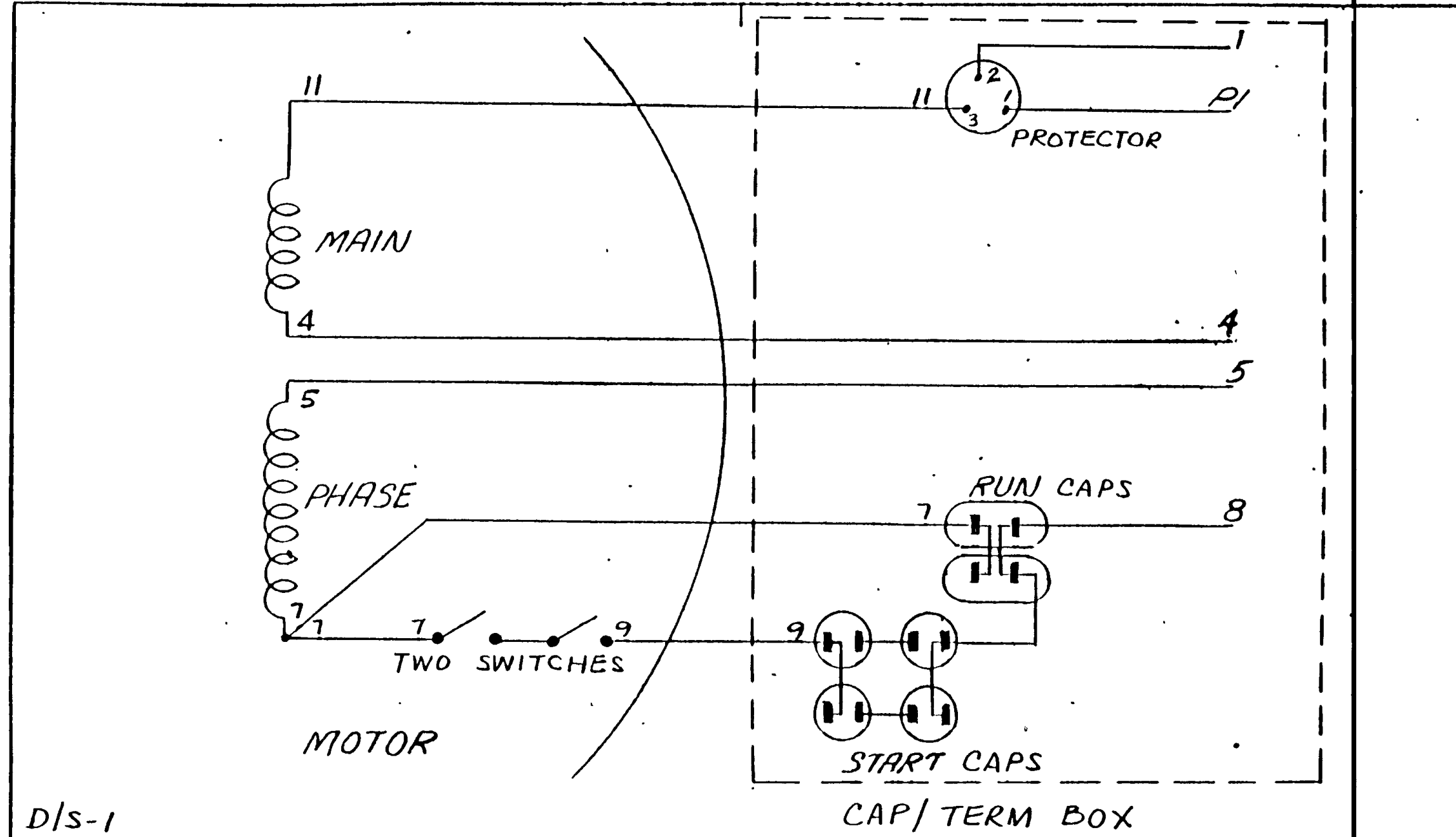
This is an uncontrolled document once printed or downloaded and is subject to change without notice. Date Created:11/29/2022



| | | | | | |
|-----|---------|--------|---------|------|---------|
| REV | ECO | REV BY | DATE | APPD | DATE |
| B | 0153256 | NK | 9/24/18 | ST | 9/24/18 |

| | | | | |
|--|---|---|------------|---|
| GEOMETRIC CHARACTERISTICS & SYMBOLS ▭ FLATNESS — STRAIGHTNESS ∠ ANGULARITY ⊥ PERPENDICULARITY (SQUARENESS) // PARALLELISM ○ ROUNDNESS (CIRCULARITY) ⌀ CYLINDRICITY △ PROFILE OF ANY SURFACE ⤴ PROFILE OF ANY LINE ↗ RUNOUT ⊕ TRUE POSITION ⊙ CONCENTRICITY = SYMMETRY | UNLESS OTHERWISE SPECIFIED DIM. TOLERANCES ARE AS FOLLOWS: INCH X XX XXX XXXX mm ±.1 ±.02 ±.005 ±.005 mm ±0.5 ±0.13 ±0.013 ANG. ±.50 DEG REMOVE BURRS & BREAK SHARP EDGES: INCH .003-.015 mm 0.1-0.4 CORNER FILLETS TO: INCH .020 mm 0.5 MACHINE SURFACES: INCH 125 mm 3.2 | DR BY: I. LOPEZ | 01-22-2013 | REGAL REGAL-BELOIT CORPORATION DESCRIPTION MODEL-IHP OUTLINE |
| | | APPD: D. JAMORA | 01-22-2013 | |
| ASME Y14.5M 1994 METRIC DIMS. SHOWN IN [BRACKETS] | | THIRD ANGLE PROJECTION | | SCALE NONE SHEET 1 |
| | | CONFIDENTIAL: THIS DRAWING AND ITS INFORMATION ARE THE EXCLUSIVE AND CONFIDENTIAL PROPERTY OF REGAL-BELOIT CORPORATION AND ARE NOT TO BE DISCLOSED, DUPLICATED, DISTRIBUTED OR OTHERWISE USED WITHOUT THE WRITTEN CONSENT OF REGAL-BELOIT CORPORATION. ALL RIGHTS RESERVED. | | |

DO NOT SCALE DRAWING

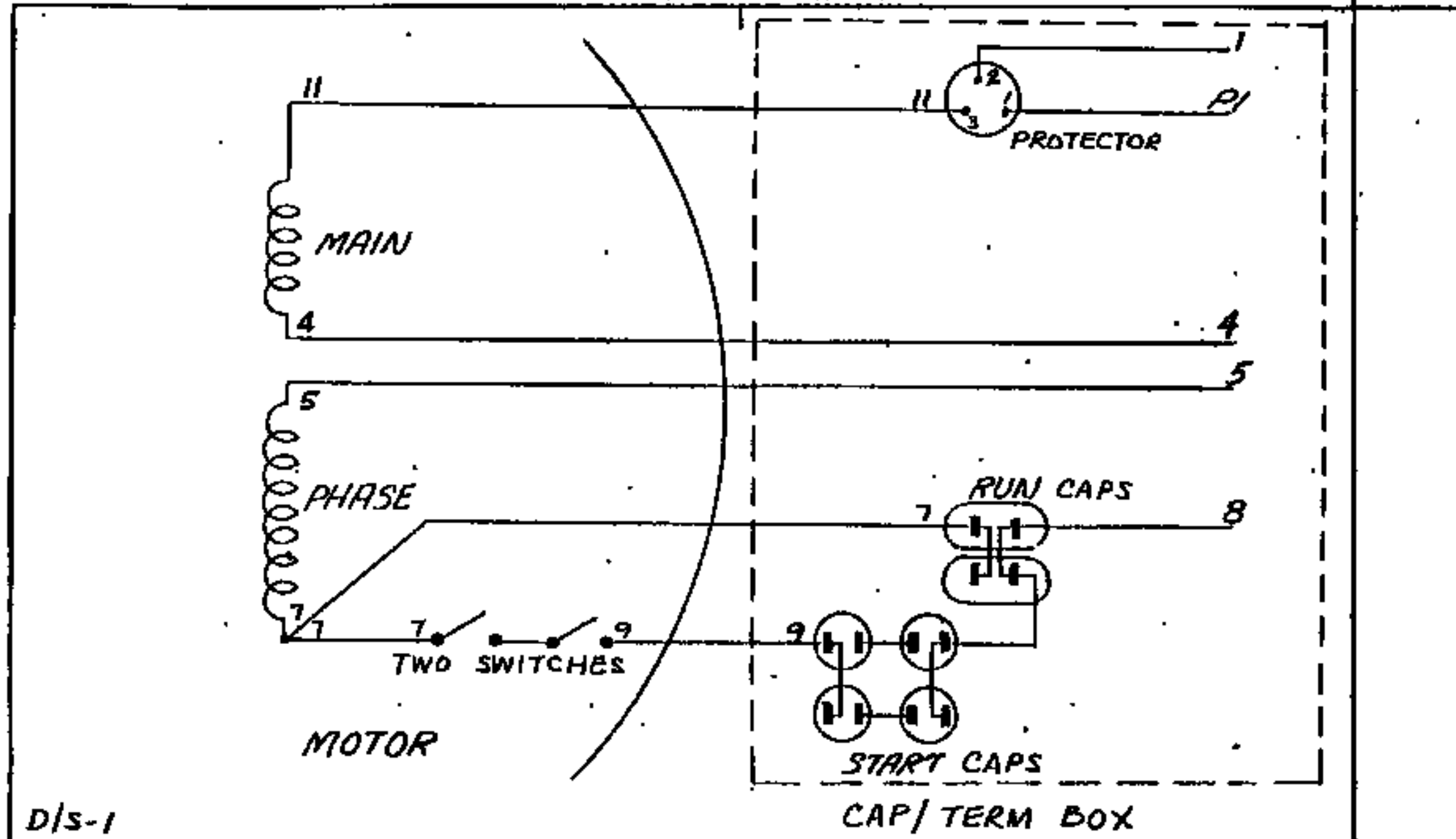


D/S-1

| | | | | | |
|---------------------------------|------------------------------------|---|-----------------|--------------------|-----------|
| REVISIONS 1 6-333790-66286 | THIRD ANGLE PROJECTION | Century Electric, Inc. 1831 Chestnut Street, St. Louis, Missouri 63168 | | CENTURY | |
| | | TITLE 999T DWG DIAG EXT CONN CP-S.VOLT REV W/2 SWITCHES W/PRO | | | |
| | DRN. <u>EA</u> 4-23-85 APPD. | CKD. <u>JJR</u> 4-26-85 SCALE 1/2 | CONT. CODE 5 | DRG. NO. 354635 | SIZE A |

DRG. NO. A

DO NOT SCALE DRAWING



D/S-1

| | | | | | | | | |
|-----------|-----------------|------------------------------|---|---------------------|-----------------|--------------------|---------|-----------|
| REVISIONS | 1 6-335790-6286 | THIRD ANGLE PROJECTION | Century Electric, Inc. 1031 Chestnut Street, St. Louis, Missouri 63108 | | | | CENTURY | |
| | | | TITLE 999T DWG DIAG EXT CONN CP-S.VOLT REV W/2 SWITCHES W/PH | | | | | |
| | | | APPD. 4-23-85 | ORR. JJR 4-26-85 | CONT. CODE 5 | DRG. NO. 354635 | | SIZE A |

DRG. NO. A