

PRODUCT INFORMATION PACKET



Model No: K301M2
Catalog No: K301M2

Farm Rated® General Purpose Farm Duty Motor, 7.5 HP, 1 Ph, 60 Hz, 230 V, 1800 RPM, F215TZ Frame, TEFC



Regal and Century are trademarks of Regal Rexnord Corporation or one of its affiliated companies.
©2022 Regal Rexnord Corporation, All Rights Reserved. MC017097E





Nameplate Specifications

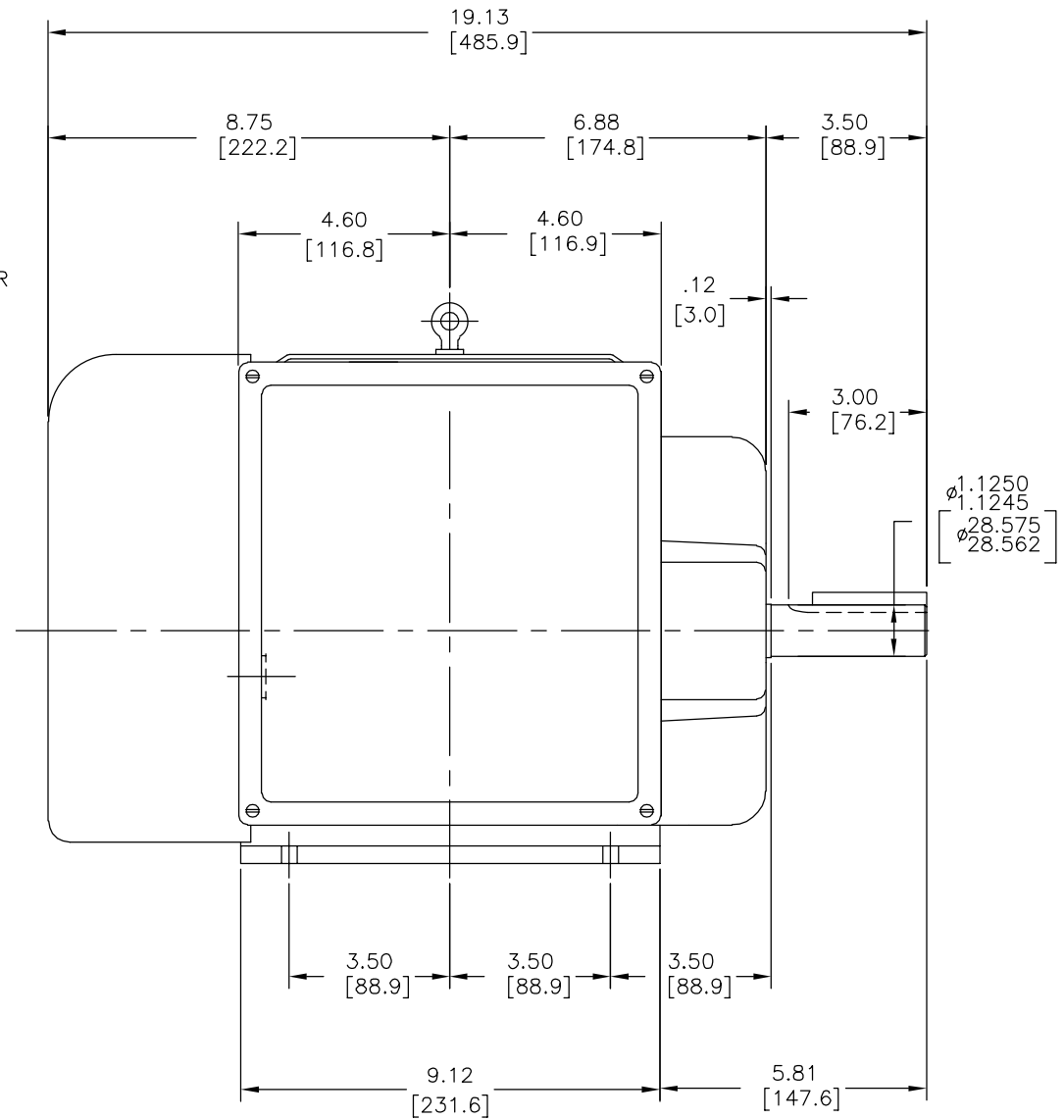
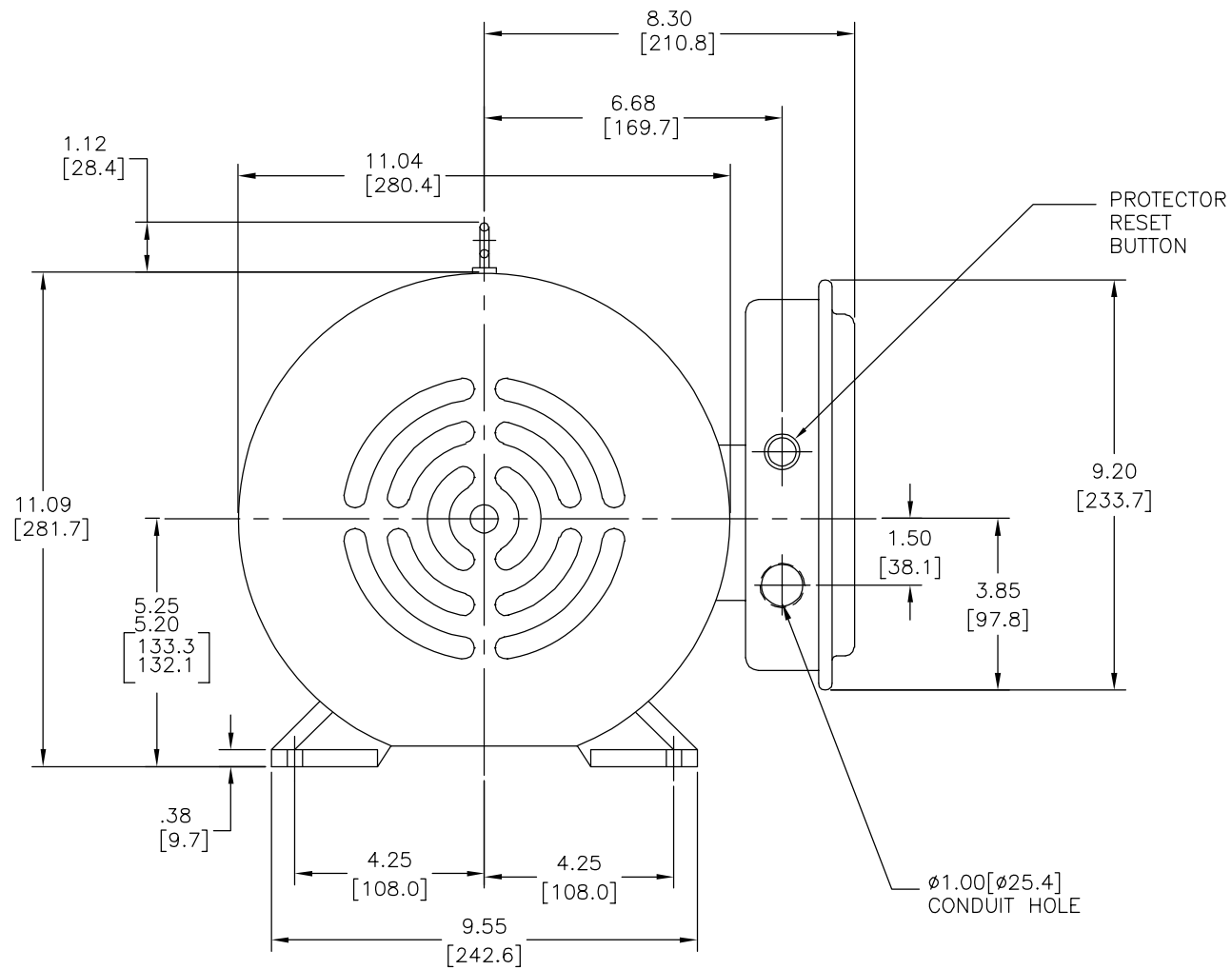
| | | | |
|--------------------|-------------------|---------------------|------------------------------------|
| Output HP | 7.5 Hp | Output KW | 5.6 kW |
| Frequency | 60 Hz | Voltage | 230 V |
| Current | 38.0 A | Speed | 1740 rpm |
| Service Factor | 1 | Phase | 1 |
| Duty | Continuous | Insulation Class | B |
| Frame | F215TZ | Enclosure | Totally Enclosed Fan Cooled |
| Thermal Protection | Manual | Ambient Temperature | 40 °C |
| UL | Recognized | CSA | Y |
| CE | N | Number of Speeds | 1 |

Technical Specifications

| | | | |
|-----------------------|--------------------------------------|--------------------|------------------------|
| Electrical Type | Capacitor Start Capacitor Run | Starting Method | Across The Line |
| Poles | 4 | Rotation | Reversible |
| Mounting | Rigid Base | Drive End Bearing | Ball |
| Opp Drive End Bearing | Ball | Frame Material | Aluminium |
| Shaft Type | Flat | Overall Length | 19.13 in |
| Frame Length | 9.00 in | Shaft Diameter | 1.125 in |
| Shaft Extension | 3.50 in | | |
| Outline Drawing | K301M2-S01 | Connection Drawing | 35196501 |

This is an uncontrolled document once printed or downloaded and is subject to change without notice. Date Created:11/29/2022

| REV | ECO | REV BY | DATE | APPD | DATE |
|-----|---------|--------------|------------|--------------|------------|
| B | 0035728 | JOSUE ORTEGA | 07-18-2013 | JOSUE ORTEGA | 07-18-2013 |



REF 114392

SPEC 58404

GEOMETRIC CHARACTERISTICS & SYMBOLS

- ∟ FLATNESS
- STRAIGHTNESS
- ∠ ANGULARITY
- ⊥ PERPENDICULARITY (SQUARENESS)
- // PARALLELISM
- ROUNDNESS (CIRCULARITY)
- ⊘ CYLINDRICITY
- △ PROFILE OF ANY SURFACE
- ⌒ PROFILE OF ANY LINE
- ↗ RUNOUT
- ⊕ TRUE POSITION
- ◎ CONCENTRICITY
- ≡ SYMMETRY

ASME Y14.5M 1994

UNLESS OTHERWISE SPECIFIED DIM. TOLERANCES ARE AS FOLLOWS:

| | | | | |
|------|------|-------|--------|--------|
| INCH | ±.1 | ±.02 | ±.005 | ±.0005 |
| mm | ±0.5 | ±0.13 | ±0.013 | |

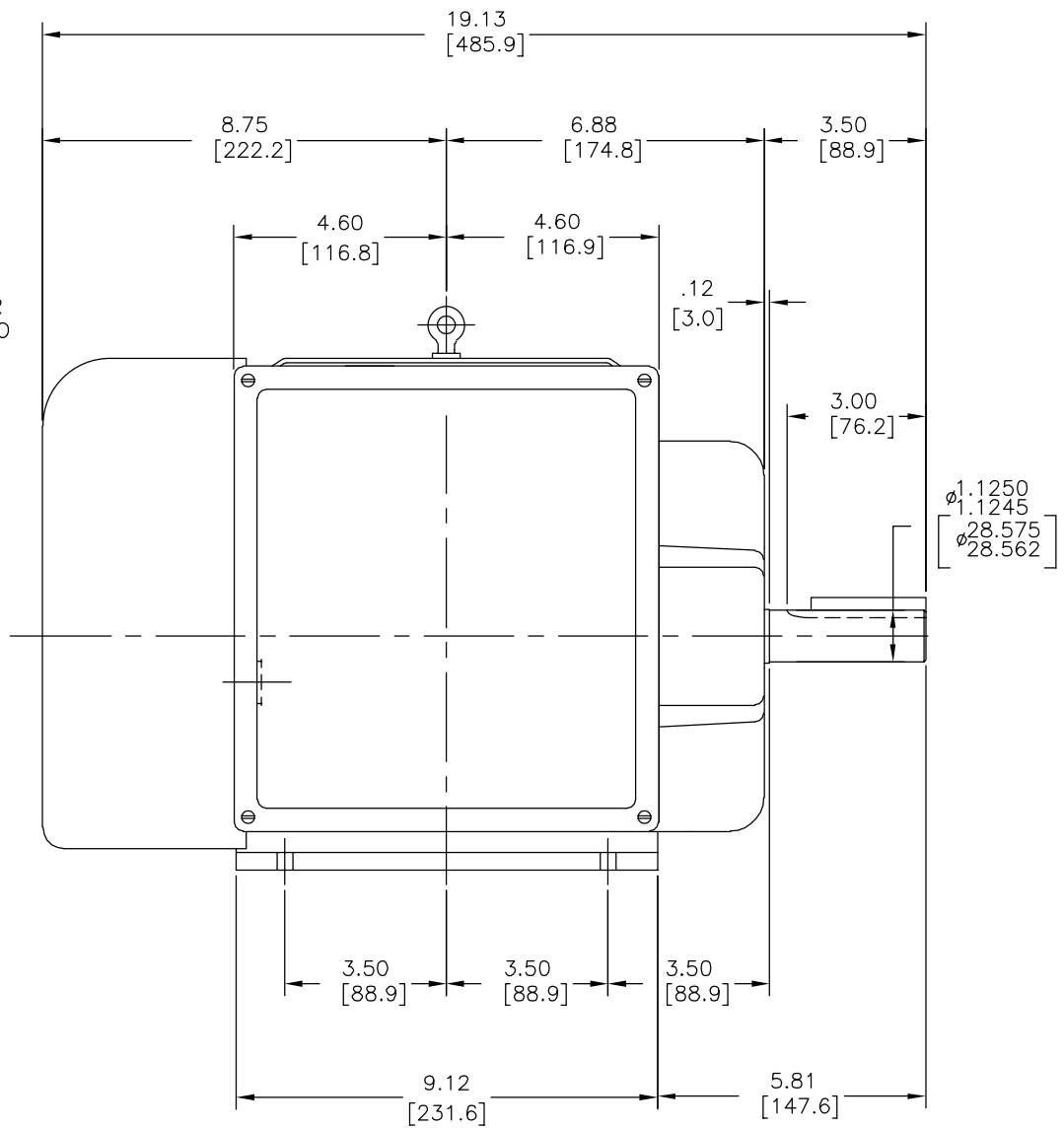
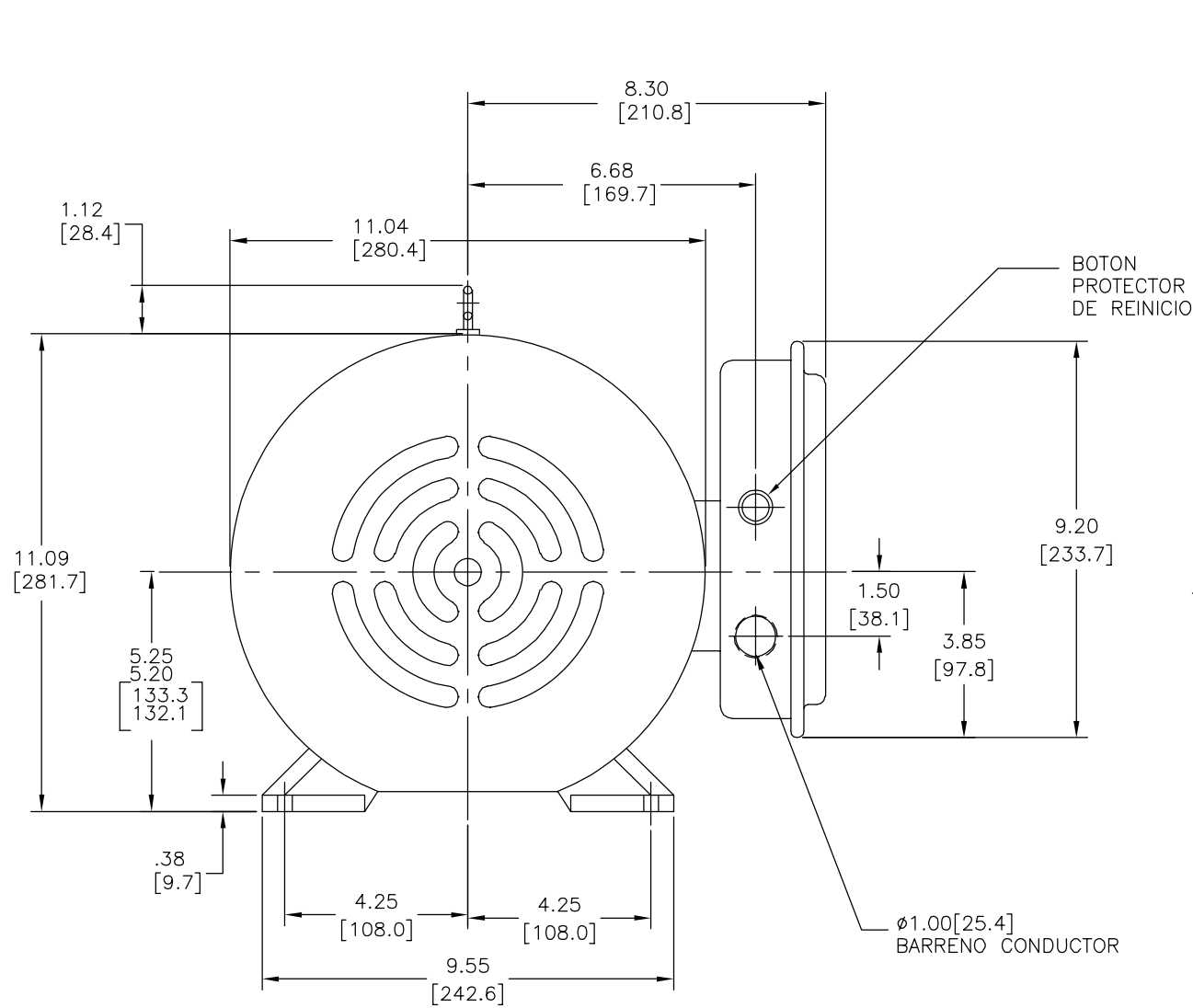
ANG. ±.50 DEG
REMOVE BURRS & BREAK SHARP EDGES:
INCH .003-.015 mm 0.1-0.4
CORNER FILLETS TO:
INCH .020 mm 0.5
MACHINE SURFACES:
INCH 125 mm 3.2

METRIC DIMS. SHOWN IN [BRACKETS]

| | | |
|------------------------------------------------------------------------------------------------------------------------------------------------------------------------------------------------------------------------------------------------------------------------------|----------|-------------------------------------|
| DR BY: | I.LOPEZ | 01-24-2013 |
| APPD: | D.JAMORA | 01-24-2013 |
| THIRD ANGLE PROJECTION | | EDS DATE 11-11-2011 FORMAT REV H |
| CONFIDENTIAL: THIS DRAWING AND ITS INFORMATION ARE THE EXCLUSIVE AND CONFIDENTIAL PROPERTY OF REGAL-BELOIT CORPORATION AND ARE NOT TO BE DISCLOSED, DUPLICATED, DISTRIBUTED OR OTHERWISE USED WITHOUT THE WRITTEN CONSENT OF REGAL-BELOIT CORPORATION. -ALL RIGHTS RESERVED. | | |

| | | |
|----------------------|------|---------------------------------|
| | | REGAL-BELOIT CORPORATION |
| DESCRIPTION | | |
| MODEL-IHP OUTLINE | | |
| SIZE | C | DWG NO K301M2 |
| SCALE | NONE | SHEET 1 |

| | | | | | | | | | |
|-----------|---------|---------------|--------------|--------|------------|---------------|--------------|--------|------------|
| REVISION: | ECO | REVISADO POR: | JOSUE ORTEGA | FECHA: | 07-18-2013 | APROBADO POR: | JOSUE ORTEGA | FECHA: | 07-18-2013 |
| B | 0035728 | | | | | | | | |



CARACTERISTICAS DE GEOMETRIA Y SIMBOLOS

- ∇ PLANICIDAD
- RECTITUD
- ∠ ANGULARIDAD
- ⊥ PERPENDICULARIDAD (A ESCUADRA)
- // PARALELISMO
- REDONDEZ (CIRCULARIDAD)
- ⊘ CILINDRICIDAD
- △ PERFIL DE CUALQUIER SUPERFICIE
- ∩ PERFIL DE CUALQUIER LINEA
- ∕ VARIACION
- ⊕ POSICION REAL
- ⊙ CONCENTRICIDAD
- = SIMETRIA

ASME Y14.5M 1994

A MENOS QUE SE ESPECIFIQUE DE OTRA MANERA, LAS TOLERANCIAS DE LAS DIMS; SON LAS SIGUIENTES:

| | | | | |
|------|------|-------|--------|--------|
| PULG | ±.1 | ±.02 | ±.005 | ±.0005 |
| mm | ±0.5 | ±0.13 | ±0.013 | |

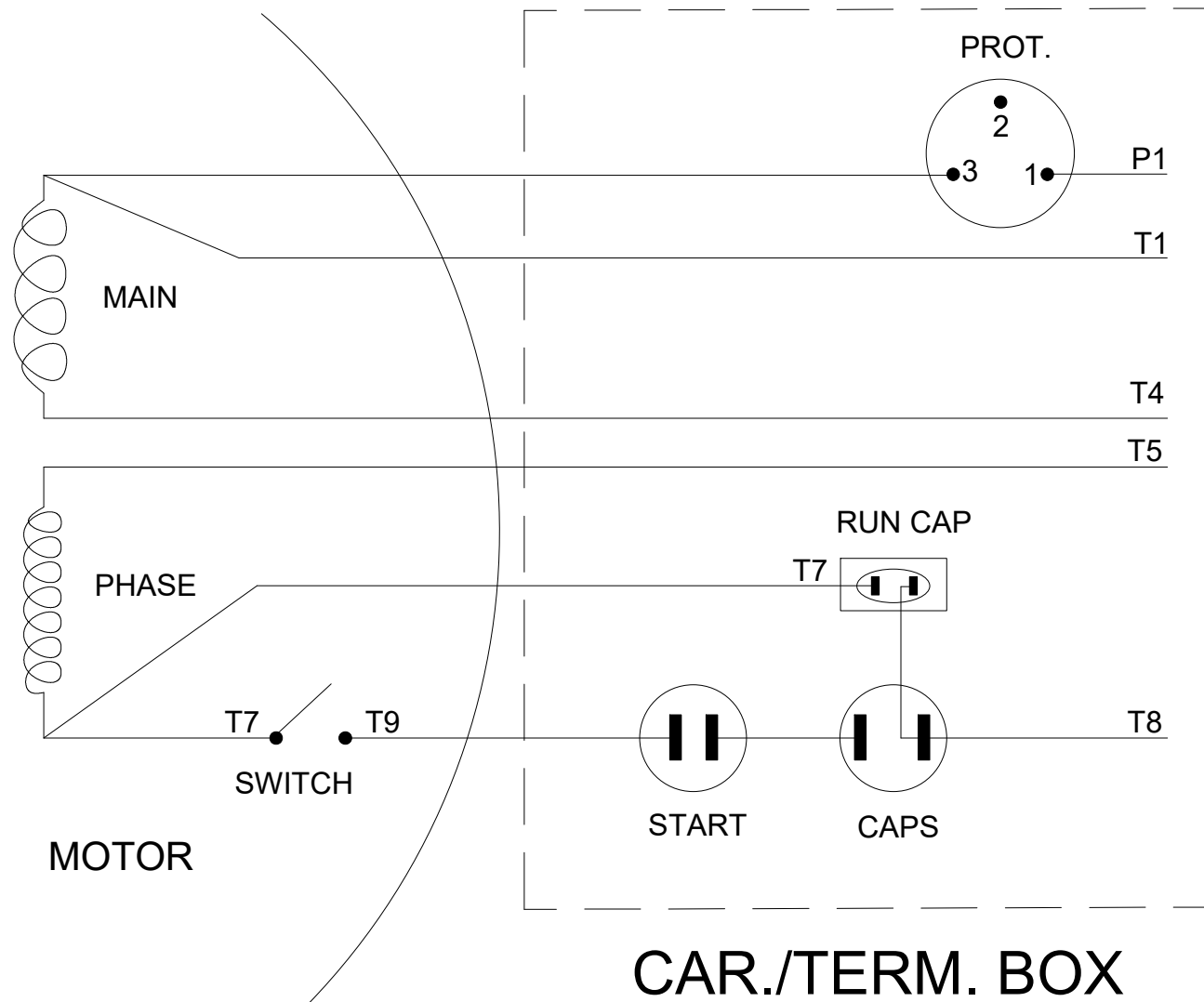
ANG. ±.50 GRADOS
ELIMINAR REBABAS Y ORILLAS FILOSAS DEL BORDE.
PULG .003-.015 mm 0.1-0.4
FILETEAR ESQUINA: PULG .020 mm 0.5
MAQUINAR SUPERFICIES
PULG 125 mm 3.2

DIMS METRICAS MOSTRADAS [PARENTESIS]

| | | |
|-----------------------------|----------|------------------------------------------|
| DIBUJADO POR: | I.LOPEZ | 01-24-2013 |
| APROBADO POR: | D.JAMORA | 01-24-2013 |
| TERCER ANGULO DE PROYECCION | | FECHA EDS: 11-11-2011 REV. FORMATO: H |

CONFIDENCIAL: ESTE DIBUJO Y SU INFORMACION SON PROPIEDAD DE USO EXCLUSIVO Y CONFIDENCIAL DE REGAL-BELOIT CORPORATION. Y NO DEBERAN SER REVELADOS, DUPLICADOS, DISTRIBUIDOS O USARSE DE OTRA MANERA SIN EL CONSENTIMIENTO ESCRITO DE REGAL-BELOIT CORPORATION. -TODOS LOS DERECHOS RESERVADOS.

| | |
|---------------------------------------|--------------------------|
| REGAL REGAL-BELOIT CORPORATION | |
| DESCRIPCION: MODEL-IHP OUTLINE | |
| TAMAÑO: C | NUMERO DE DIBUJO: K301M2 |
| ESCALA: NONE | HOJA: 1 |



REPLACES 347008

| | | |
|-----------------------------------------------------------------------------------------------------------------------------------------------------------------------------------------------------------------------------------------------------------------------------------------------------------------------------------------------------------------------------------------------------------------------------------------------------------------------------------------------------------------------------------------------------------------------------------------------------------------------------------------------------------------------------------------------------|--------------------------|---------------------------------------|
| DRAWING REVISION B | REVISION BY KR | REV DATE/ © DATE 08/30/2022 |
| REQUEST NUMBER CR-0011051 | APPROVED BY YV | DATE 08/30/2022 |
| REQUEST NUMBER DESCRIPTION UPDATED LEADS FROM 1,4,5,7,8,9 TO T1,T4,T5,T7,T8,T9 | | |
| <small>COPYRIGHT (PER REVISION DATE) REGAL BELOIT AMERICA, INC. ALL RIGHTS RESERVED. PROPRIETARY AND CONFIDENTIAL INFORMATION - THIS DOCUMENT IS THE PROPERTY OF REGAL BELOIT AMERICA, INC. ("OWNER") AND CONTAINS OWNER'S PROPRIETARY INFORMATION. ANY PERSON, CORPORATION OR OTHER FIRM RECEIVING IT IS DEEMED, BY RECEIVING IT, TO AGREE THAT IT, AND/OR ANY PART OF IT, SHALL NOT BE DISCLOSED TO ANY PERSON, CORPORATION OR OTHER ENTITY, DUPLICATED, AND/OR USED, EXCEPT AS EXPRESSLY APPROVED IN WRITING IN ADVANCE BY OWNER. THIS DOCUMENT SHALL BE RETURNED TO OWNER UPON REQUEST. IT MAY BE SUBJECT TO CERTAIN RESTRICTIONS UNDER APPLICABLE EXPORT CONTROL LAWS AND REGULATIONS.</small> | | |

| | | | |
|--------------------------------------------------------------|---------|----------|---------|
| TOLERANCES (EXCEPT AS NOTED): | | | |
| DEC. | INCH | mm | ANGLE |
| .X | ±0.1 | [±3] | ±7' 30" |
| .XX | ±0.02 | [±0.5] | |
| .XXX | ±0.005 | [±0.13] | |
| .XXXX | ±0.0005 | [±0.013] | |
| REMOVE BURRS & BREAK SHARP EDGES: .003/.015 [.08/.38] X 45 ° | | | |
| CORNER FILLETS: R.02 [.5] | | | |
| MACHINED SURFACES: 200 / 5.1 | | | |
| INCH √ mm | | | |
| mm DIMENSIONS IN [BRACKETS] ARE FOR REFERENCE ONLY | | | |

| |
|---------------------------|
| DRAWN BY BY |
| DATE 03/15/84 |
| APPROVED BY JJR |
| DATE 03/16/84 |
| REFERENCE |
| THIRD ANGLE PROJECTION |

| | | | |
|------------------------|---------------------------------|---------------------------------------------|----------------|
| | | Regal Beloit America, Inc. | |
| | | DESCRIPTION CONN DIAGRAM EXTERNAL | |
| SIZE A | DRAWING NUMBER 5 of 5 | MATERIAL | PROCESS/FINISH |
| SHEET 1 OF 1 | | 35196501 | |