

# PRODUCT INFORMATION PACKET



Model No: K223M2  
Catalog No: K223M2  
5 HP General Purpose Motor, 1 phase, 3600 RPM, 230 V, 184T Frame, TEFC  
General Purpose Motors



Regal and Century are trademarks of Regal Rexnord Corporation or one of its affiliated companies.  
©2021 Regal Rexnord Corporation, All Rights Reserved. MC017097E





### Nameplate Specifications

Output HP	5 Hp	Output KW	3.7 kW
Frequency	60 Hz	Voltage	230 V
Current	19.8 A	Speed	3530 rpm
Service Factor	1	Phase	1
Duty	Continuous	Insulation Class	F
Frame	184T	Enclosure	Totally Enclosed Fan Cooled
Thermal Protection	No	Ambient Temperature	40 °C
UL	Recognized	CSA	Y
CE	Y	Number of Speeds	1

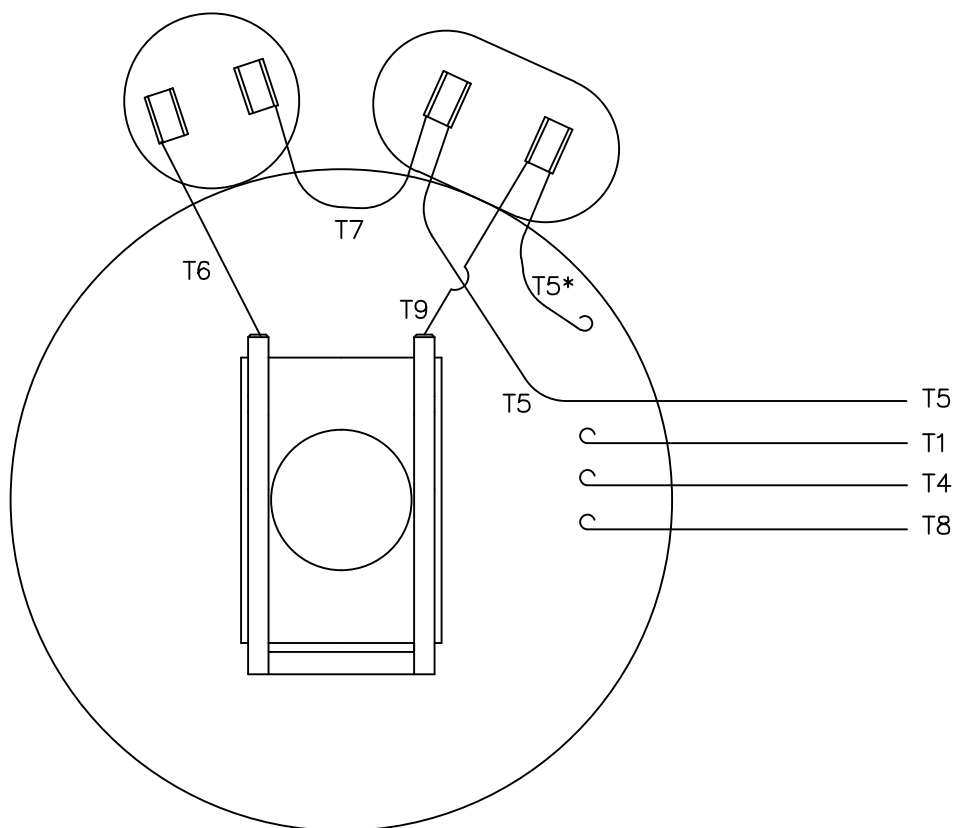
### Technical Specifications

Electrical Type	Capacitor Start Capacitor Run	Starting Method	Across The Line
Poles	2	Rotation	Selective Counterclockwise
Mounting	Rigid Base	Drive End Bearing	Ball
Opp Drive End Bearing	Ball	Frame Material	Rolled Steel
Shaft Type	Keyed	Overall Length	16.96 in
Frame Length	11.50 in	Shaft Diameter	1.125 in
Shaft Extension	2.81 in		
Outline Drawing	035564CY	Connection Drawing	005018.01CY

This is an uncontrolled document once printed or downloaded and is subject to change without notice. Date Created:10/12/2021

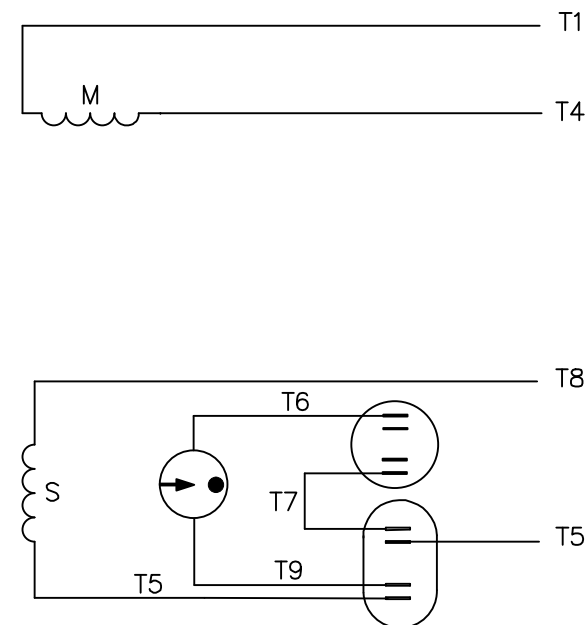


VIEW FROM OUTSIDE OF MOTOR AT SWITCH END.



\* THIS LEAD MAY BE WHITE

## LINE LEADS

ROTATION  
FACING  
LEAD END

L1

L2

C.C.W.

T1,T8

T4,T5

C.W.

T1,T5

T4,T8

TOLERANCES  
UNLESS SPECIFIED

DEC. INCHES

.X ±.1

.XX ±.01

.XXX ±.005

.XXXX ±.0005

ANG ±1/2"

TITLE  
EXTERNAL WIRING DIAGRAM  
TYPE "K" W/O PROTECTOR

MAT'L. DECAL - 004018

FINISH

DRAWN GR 07/26/12

CHK VS 07/26/12

APPD

SCALE 1=1

REF

FMF

PREV

THIS DRAWING IN DESIGN AND DETAIL IS OUR PROPERTY AND MUST NOT BE USED EXCEPT  
IN CONNECTION WITH OUR WORK ALL RIGHTS OF DESIGN AND INVENTION ARE RESERVED  
THIS IS AN ELECTRONICALLY GENERATED DOCUMENT - DO NOT SCALE THIS PRINTRFP  
DIST BRF-NLV

CAD FILE 00501801CY

SIZE  
ADRAWING NO.  
005018-01CY

REV.