

PRODUCT INFORMATION PACKET

Model No: K220M2

Catalog No: K220M2

Crop Dryer Motor, 5.0 HP, 1 Ph, 60 Hz, 200-230 V, 3600 RPM, 184TZ Frame, ODP



Regal and are trademarks of Regal Rexnord Corporation or one of its affiliated companies.
©2022 Regal Rexnord Corporation, All Rights Reserved. MC017097E

Nameplate Specifications

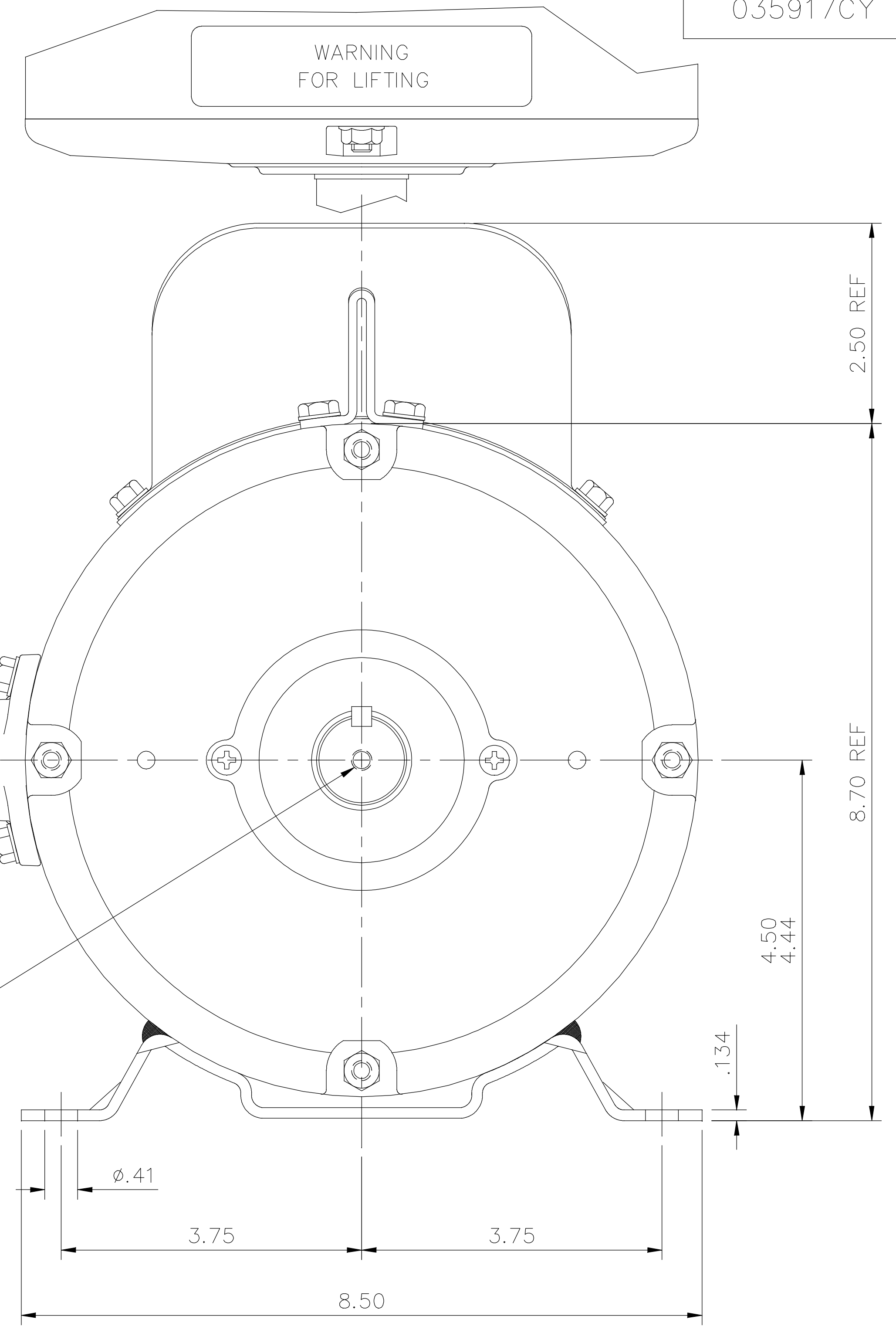
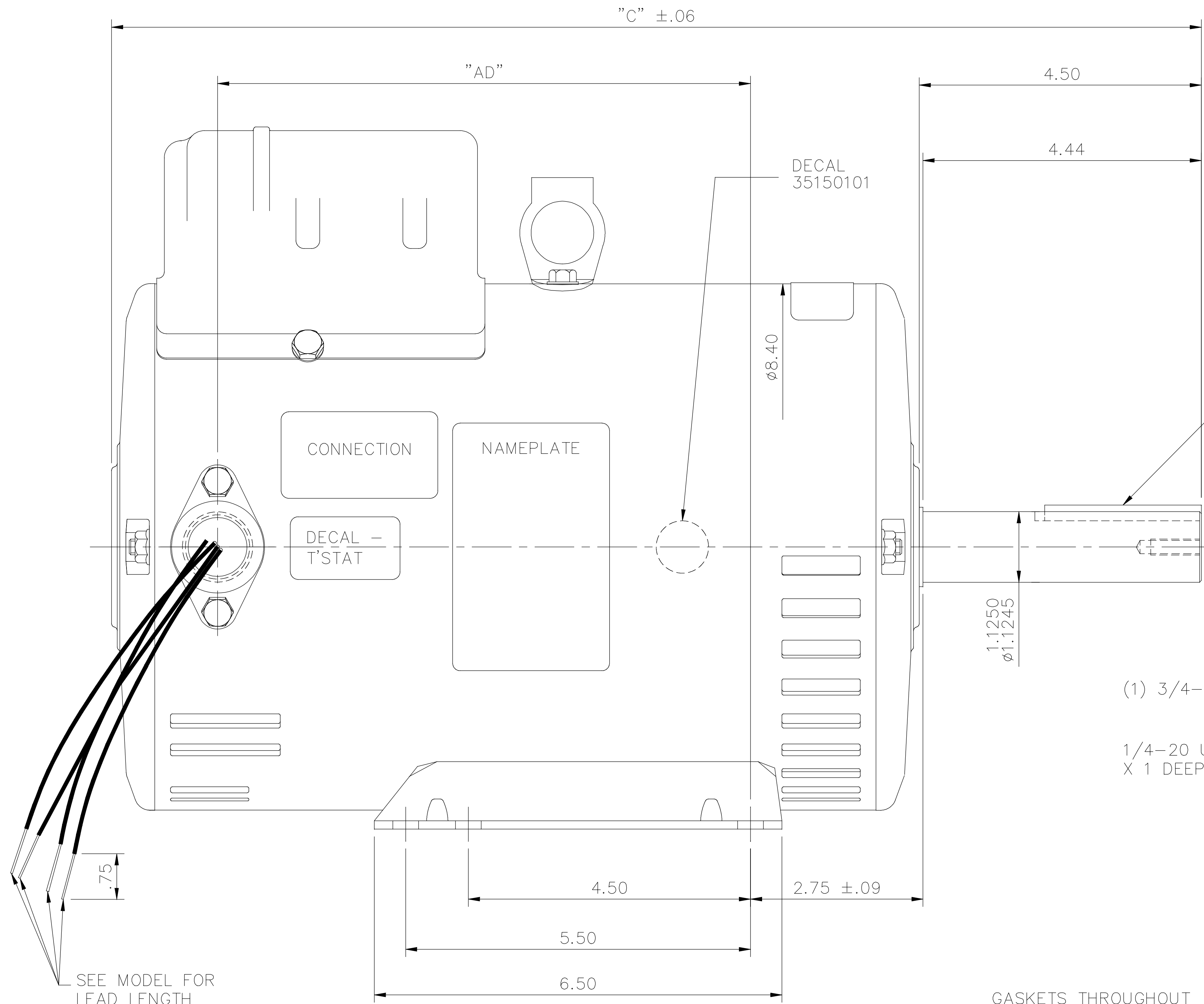
Output HP	5.0 Hp	Output KW	3.7 kW
Frequency	60 Hz	Voltage	200-230 V
Current	22.3-20.5 A	Speed	3440 rpm
Service Factor	1	Phase	1
Duty	Air Over	Insulation Class	F
Frame	184TZ	Enclosure	Open Drip Proof
Thermal Protection	No Protection	Ambient Temperature	50 °C
UL	Recognized	CSA	Y
CE	N	Number of Speeds	1

Technical Specifications

Electrical Type	DC Permanent Magnet	Starting Method	Across The Line
Poles	2	Rotation	Selective Counterclockwise
Mounting	Rigid Base	Drive End Bearing	Ball
Opp Drive End Bearing	Ball	Frame Material	Rolled Steel
Shaft Type	Keyed	Overall Length	17.38 in
Frame Length	11.50 in	Shaft Diameter	1.125 in
Shaft Extension	4.50 in		
Outline Drawing	035917CY	Connection Drawing	005368.07CY

This is an uncontrolled document once printed or downloaded and is subject to change without notice. Date Created:09/27/2022

035917CY



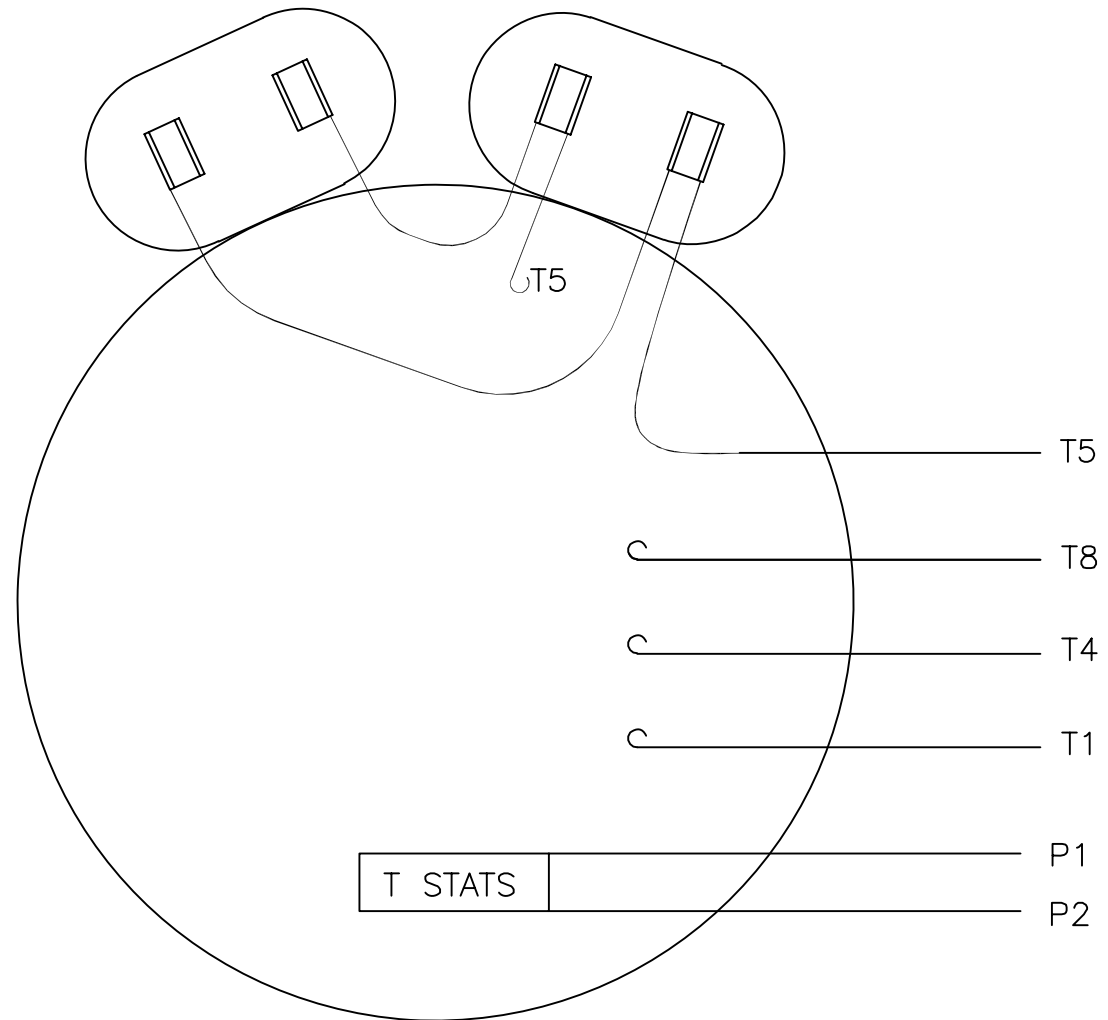
GASKETS THROUGHOUT

SEE MODEL FOR LEAD LENGTH

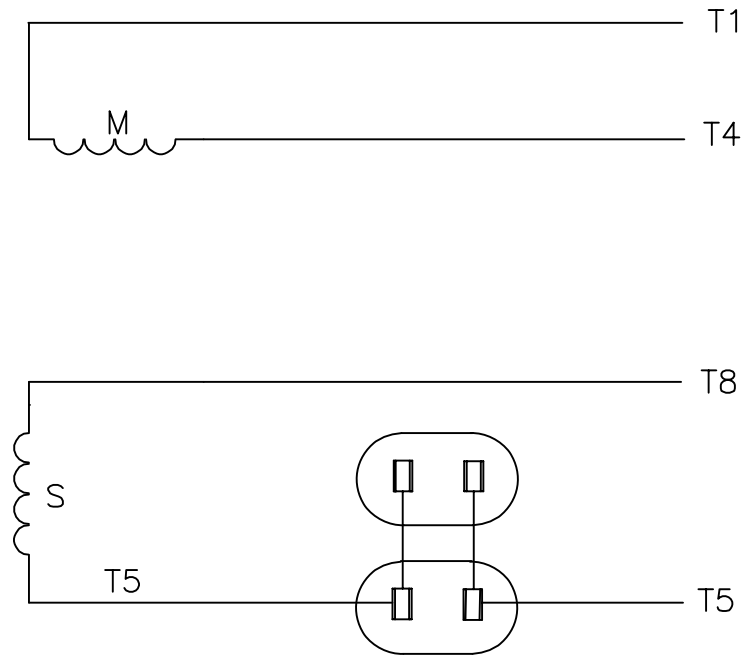
DASH NO.	"C"	"AD"	TOLERANCES UNLESS SPECIFIED				REGAL™ Regal Beloit America, Inc.	DRAWN			
			DEC.	INCHES	GR	VS					
950	15.38	6.50	.X	±.1			GR	08/31/12			
1000	15.88	7.00	.XX	±.03			CHK	VS 08/31/12			
1050	16.38	7.50	.XXX	±.005			APPD				
1100	16.88	8.00	A	REMOVED FULL DEPTH NOTE PER ECR-0142614	MVG 01/02/18	SR	TITLE	OUTLINE - 184TZ FRAME			
1150	17.38	8.50	NO.	REVISION	BY & DATE	CHK	DRIP PROOF - RIGID MOUNT	SCALE	1=2		
1200	17.88	9.00				ANG	MAT'L.	REF	035613		
1250	18.38	9.50				±1/2'	FINISH	FMF			
THIS DRAWING IN DESIGN AND DETAIL IS OUR PROPERTY AND MUST NOT BE USED EXCEPT IN CONNECTION WITH OUR WORK ALL RIGHTS OF DESIGN AND INVENTION ARE RESERVED THIS IS AN ELECTRONICALLY GENERATED DOCUMENT - DO NOT SCALE THIS PRINT						RFP	CAD FILE	035917CY	SIZE	DRAWING NO.	REV.
						DIST			B	035917CY	A

005368-07CY

VIEW FROM OUTSIDE OF MOTOR AT SWITCH END.



LINE LEADS



ROTATION FACING LEAD END	L1	L2	
C.W.	T1,T5	T4,T8	
C.C.W	T1,T8	T4,T5	

		TOLERANCES UNLESS SPECIFIED				DRAWN GR 08/29/12			
		DEC.	INCHES			CHK AK 08/29/12			
		.X	±.1			APPD			
C	UPDATED CONNECTION DIAGRAM PER ECO-0046112	AA 02/24/14	DJ			.XX	±.01	TITLE	EXTERNAL WIRING DIAGRAM TPYE "P" W/O PROTECTOR
B				.XXX	±.005	MAT'L.	SCALE 1=1		
A				.XXXX	±.0005	FINISH	REF 005368-06CY		
NO.	REVISION	BY & DATE	CHK	ANG	±1/2'	PREV	FMF 121529.00		
THIS DRAWING IN DESIGN AND DETAIL IS OUR PROPERTY AND MUST NOT BE USED EXCEPT IN CONNECTION WITH OUR WORK ALL RIGHTS OF DESIGN AND INVENTION ARE RESERVED THIS IS AN ELECTRONICALLY GENERATED DOCUMENT - DO NOT SCALE THIS PRINT				RFP	CAD FILE	00536807CY	SIZE	DRAWING NO.	REV.
				DIST			A	005368-07CY	C