

PRODUCT INFORMATION PACKET



Model No: G151691.60

Catalog No: G151691.60

BSOLETE - REPLACED BY 171691.60 - 100HP..1780RPM.404.DP.208-230/460V.3PH.60HZ.CONT.NOT.40C.1.15SF.
RIGID.GENERAL PURPOSE.C404T17DK1A

Regal and Leeson are trademarks of Regal Rexnord Corporation or one of its affiliated companies.
©2023 Regal Rexnord Corporation, All Rights Reserved. MC017097E





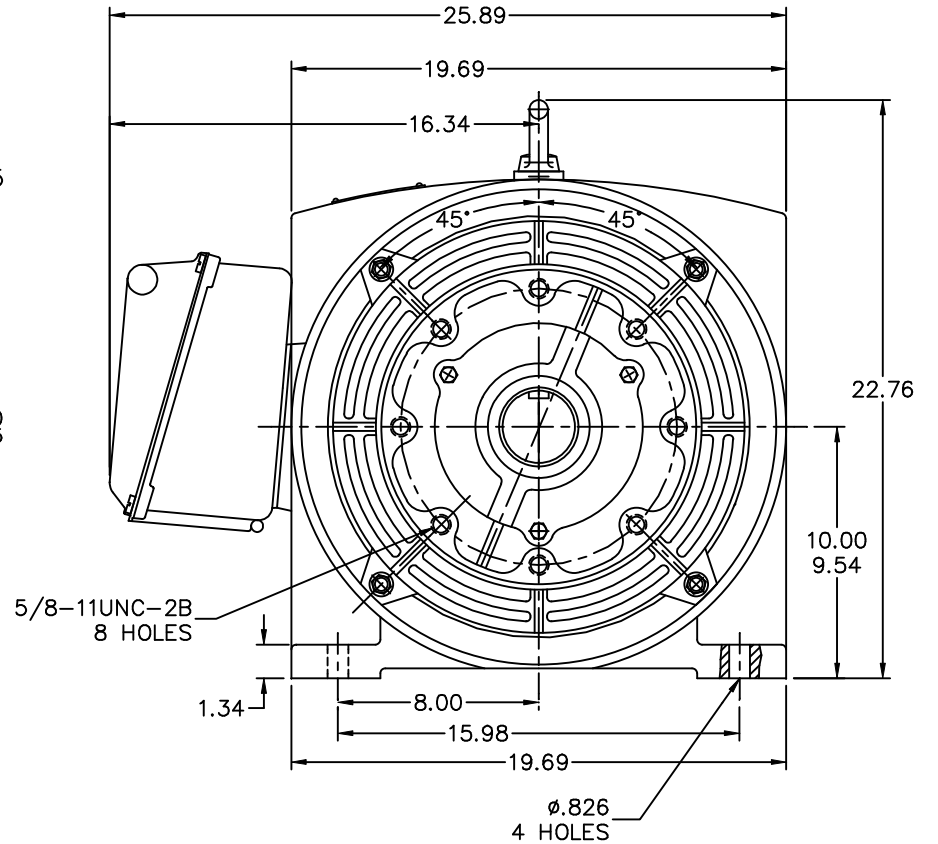
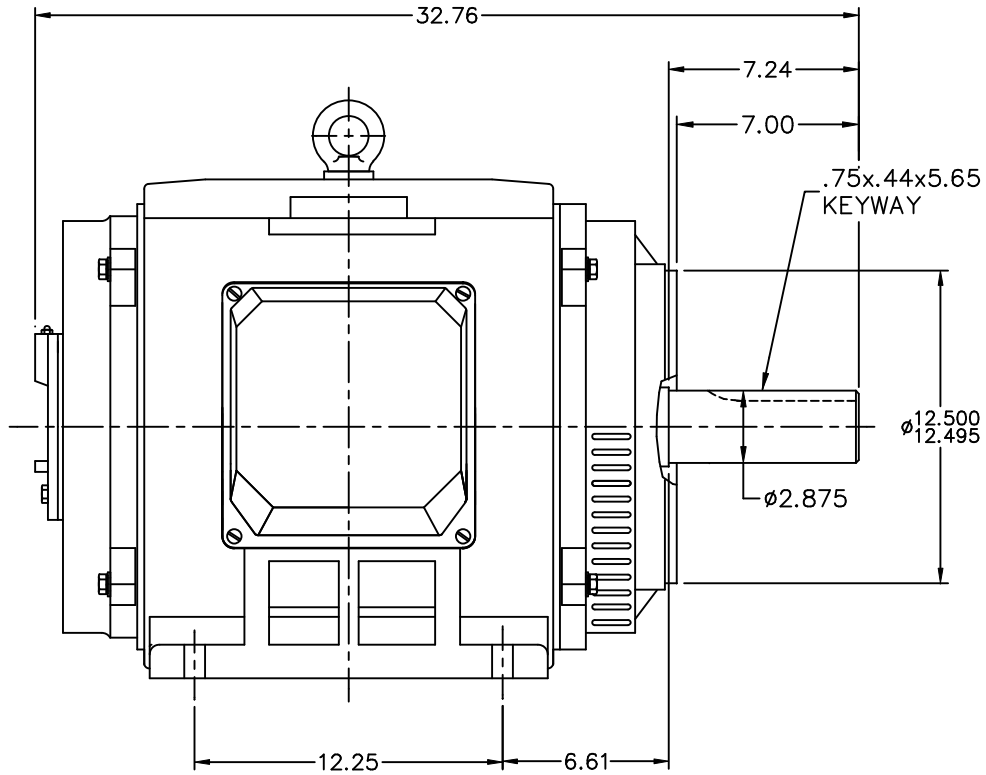
Nameplate Specifications

Phase	3	Output HP	100 & 75 Hp
Output KW	74.6 & 56.0 kW	Voltage	208-230/460 & 190/380 V
Speed	1780 & 1484 rpm	Service Factor	1.25 & 1.15
Frame	404TC	Enclosure	Drip Proof
Thermal Protection	No Protection	Efficiency	94.1 & 94.5 %
Ambient Temperature	40 °C	Frequency	60 & 50 Hz
Current	252-234/117 & 206/103 A	Power Factor	84.9
Duty	Continuous	Insulation Class	F
Design Code	B	KVA Code	G
Drive End Bearing Size	6316	Opp Drive End Bearing Size	6314
UL	Recognized	CSA	N
CE	Y	IP Code	12
Number of Speeds	1		

Technical Specifications

Electrical Type	Squirrel Cage Induction Run	Starting Method	Across The Line
Poles	4	Rotation	Reversible
Resistance Main	.0471 Ohms	Mounting	Rigid Base
Motor Orientation	Horizontal	Drive End Bearing	Ball
Opp Drive End Bearing	Ball	Frame Material	Cast Iron
Shaft Type	T	Assembly/Box Mounting	F1/F2 CAPABLE
Outline Drawing	SS622043LE	Connection Drawing	004172.01

This is an uncontrolled document once printed or downloaded and is subject to change without notice. Date Created:06/22/2023



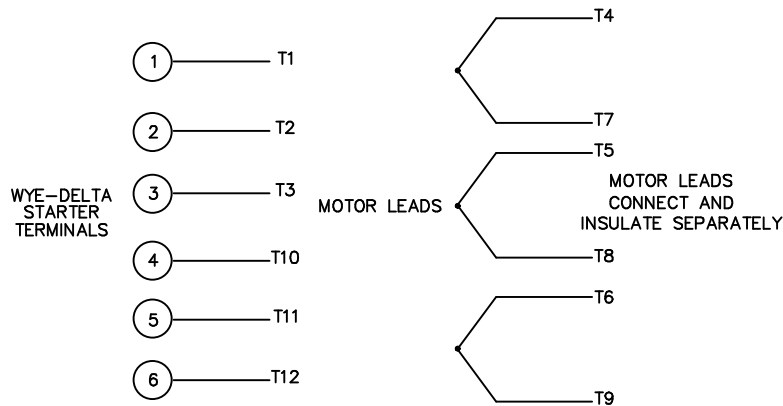
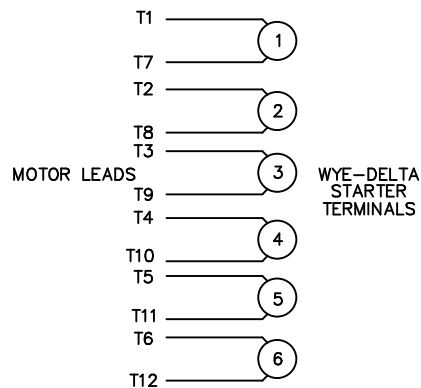
(DRAWING IS NOT TO SCALE)

		TOLERANCES UNLESS SPECIFIED		LEESON	ELECTRIC MOTORS GEARMOTORS AND DRIVES	DRAWN RWR 07-29-2005	
		DEC.	INCHES			CHK ML 08-16-2005	
		.X	±.1			APPD	
		.XX	±.03	TITLE	OUTLINE	SCALE 5=26	
		.XXX	±.005		N404TC FRAME -(ODP)	REF	
		.XXXX	±.0005	MAT'L		FMF HE BEI ELEC. MOTR	
NO.	REVISION	BY & DATE	CHK	ANG	±1/2'	FINISH	PREV N404TC (ODP?)
THIS DRAWING IN DESIGN AND DETAIL IS OUR PROPERTY AND MUST NOT BE USED EXCEPT IN CONNECTION WITH OUR WORK ALL RIGHTS OF DESIGN AND INVENTION ARE RESERVED THIS IS AN ELECTRONICALLY GENERATED DOCUMENT - DO NOT SCALE THIS PRINT				RFP	CAD FILE SS622043LE	SIZE B	DRAWING NO. PAGE 1 OF 1 REV. SS622043LE
				DIST			

WYE - DELTA STARTING USEABLE ON 2,4 AND 6 POLE MOTORS.

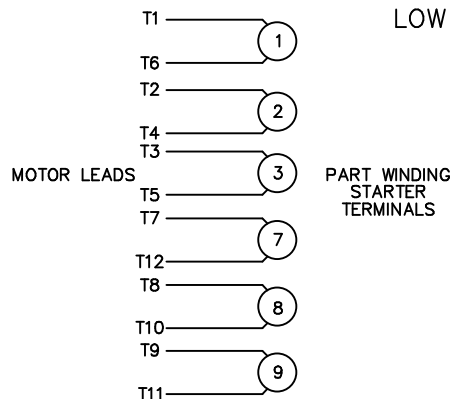
LOW VOLTAGE CONNECTION

HIGH VOLTAGE CONNECTION



REFER TO THE WYE-DELTA STARTER CONNECTION INSTRUCTIONS FOR PROPER CONNECTION OF POWER LINES TO STARTER.

PART WINDING START USABLE ON 4 & 6 POLE MOTORS
LOW VOLTAGE CONNECTION ONLY



REFER TO THE PART WINDING STARTER INSTRUCTIONS FOR PROPER CONNECTION OF POWER LINES TO STARTER.

REFER TO THE CUTLER - HAMMER OR EQUIV. FOR PROPER SELECTION OF OVERLOAD HEATER COILS.



ACROSS THE LINE START & RUN				
	LINE 1	LINE 2	LINE 3	JOIN & INSULATE SEPARATELY
HIGH VOLT	T1, T12	T2, T10	T3, T11	(T4, T7) (T5, T8) (T6, T9)
LOW VOLT	T1, T6 T7, T12	T2, T4 T8, T10	T3, T5 T9, T11	

				TOLERANCES UNLESS SPECIFIED		LEESON	ELECTRIC MOTORS GEARMOTORS AND DRIVES		DRAWN WLW 09/08/77	
				DEC.	INCHES		ELECTRIC MOTORS GEARMOTORS AND DRIVES		CHK RPB 09/12/77	
				.X	±.1		ELECTRIC MOTORS GEARMOTORS AND DRIVES		APPD JCW 09/12/77	
03	REV'D LOW VOLTAGE CONN. LEADS PER ELEC.	BJB 06/07/00	.XX	±.01	TITLE DELTA - WYE CONNECTION DIAGRAM		SCALE 1=1			
02	ADDED T-STAT. NOTES PER ELECTRICAL	KMM 06/02/98	.XXX	±.005			REF			
01	REDRAWN TO CAD	DBT 06/02/97	.XXXX	±.0005	MAT'L.		FMF			
NO.	REVISION	BY & DATE	CHK	ANG	±1/2"	FINISH	PREV			
THIS DRAWING IN DESIGN AND DETAIL IS OUR PROPERTY AND MUST NOT BE USED EXCEPT IN CONNECTION WITH OUR WORK ALL RIGHTS OF DESIGN AND INVENTION ARE RESERVED THIS IS AN ELECTRONICALLY GENERATED DOCUMENT - DO NOT SCALE THIS PRINT				RFP	CAD FILE 00417201		SIZE	DRAWING NO.		REV.
				DIST			A	004172-01		03