

# PRODUCT INFORMATION PACKET



Model No: G151345.60

Catalog No: G151345.60

OBsolete REPLACED BY 171852.60 - ..7 1/2HP..3510RPM.213.TEFC.230/460V.3PH.60HZ.CONT.40C.1.15SF.C FA  
CE.C213T34FC43C.....NOT.....

Regal and Leeson are trademarks of Regal Rexnord Corporation or one of its affiliated companies.

©2023 Regal Rexnord Corporation, All Rights Reserved. MC017097E





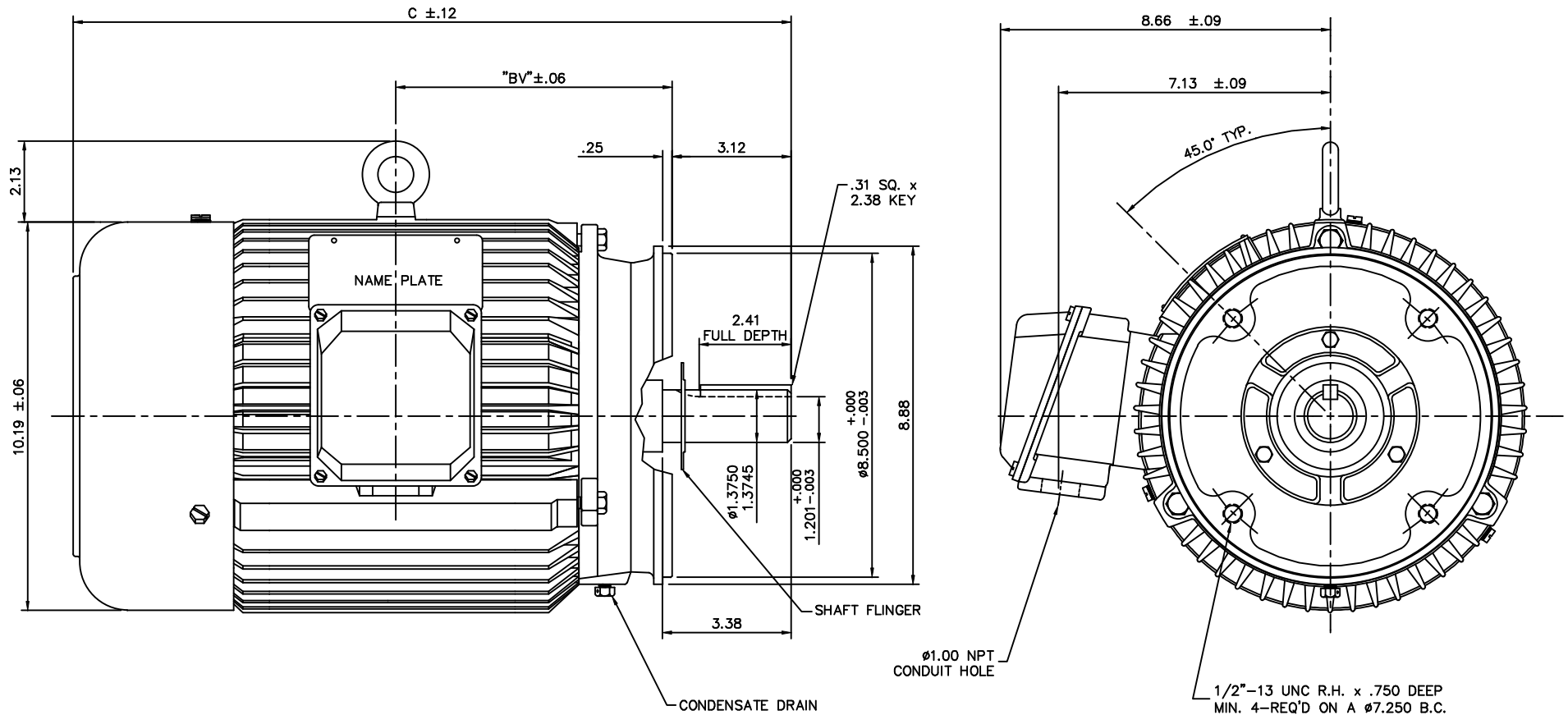
### Nameplate Specifications

Phase	3	Output HP	7.50 & 5 Hp
Output KW	5.6 & 3.7 kW	Voltage	208-230/460 & 190/380 V
Speed	3515 & 2930 rpm	Service Factor	1.15 & 1.15
Frame	213TC	Enclosure	Totally Enclosed Fan Cooled
Thermal Protection	No Protection	Efficiency	88.5 %
Ambient Temperature	40 °C	Frequency	60 & 50 Hz
Current	19.4-17.8/8.9 & 14.4/7.2 A	Power Factor	87.2
Duty	Continuous	Insulation Class	F
Design Code	B	KVA Code	H
Drive End Bearing Size	6308	Opp Drive End Bearing Size	6306
UL	Recognized	CSA	Y
CE	Y	IP Code	43
Number of Speeds	1		


### Technical Specifications

Electrical Type	Squirrel Cage Inverter Rated	Starting Method	Wye Start Delta Run Or Inverter
Poles	2	Rotation	Reversible
Resistance Main	1.76 Ohms	Mounting	VERIFY
Motor Orientation	VERIFY	Drive End Bearing	Ball
Opp Drive End Bearing	Ball	Frame Material	Cast Iron
Shaft Type	T	Assembly/Box Mounting	VERIFY
Inverter Load	CONSTANT 10:1		
Outline Drawing	16957760	Connection Drawing	005010.01

This is an uncontrolled document once printed or downloaded and is subject to change without notice. Date Created:06/23/2023



FRAME	"C"	"BV"
213T	18.84	7.25
215T	20.34	8.00

						TOLERANCES UNLESS SPECIFIED			ELECTRIC MOTORS GEARMOTORS AND DRIVES	DRAWN DRZ 05/01/01		
						DEC.	INCHES			CHK		
						.X	±.1			APPD		
						.XX	±.03	TITLE OUTLINE - 210T FRAME, TEFC "C-FACE", NEW CON-BOX		SCALE	3=8	
02	REVISED OAL WITH ACUTUAL MOTOR COMPONENT DIMS	ADS	8/19/02			.XXX	±.005			REF		
01	REDRAWN TO CURRENT CAD STANDARDS	CJK	9/17/01			.XXXX	±.0005	MAT'L	CAS- IRON	FMF	LEESON STOCK	
NO.	REVISION	BY & DATE	CHK	ANG	±1/2"	FINISH	HEBEI		PREV			
THIS DRAWING IN DESIGN AND DETAIL IS OUR PROPERTY AND MUST NOT BE USED EXCEPT IN CONNECTION WITH OUR WORK ALL RIGHTS OF DESIGN AND INVENTION ARE RESERVED THIS IS AN ELECTRONICALLY GENERATED DOCUMENT - DO NOT SCALE THIS PRINT						RFP	CAD FILE	16957760		SIZE	DRAWING NO.	REV.
						DIST			B	169577-60		02

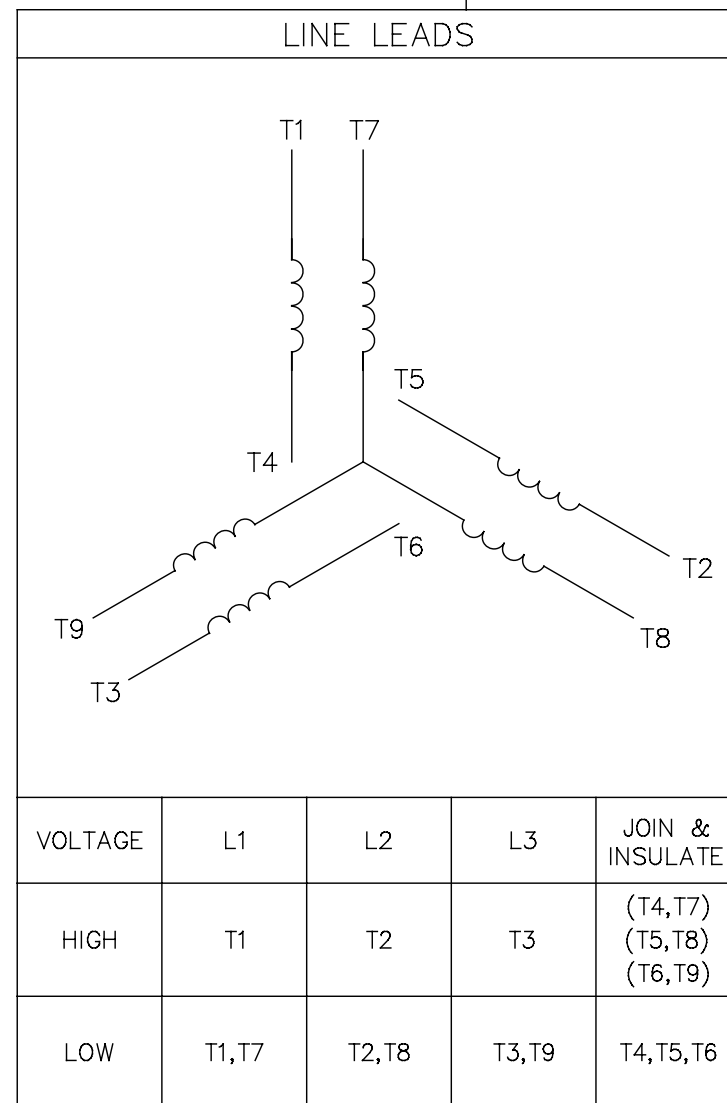
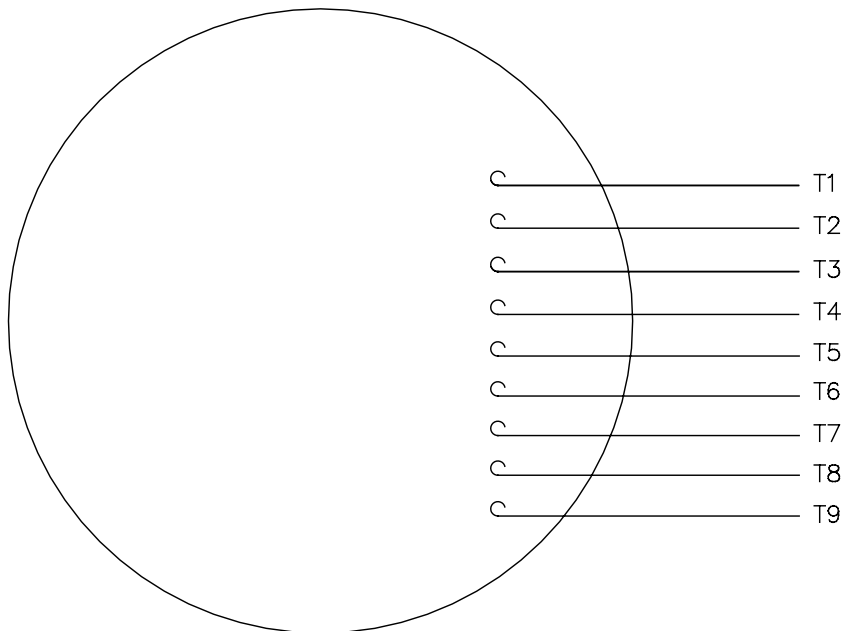
```
ERROR: undefined
OFFENDING COMMAND: currentdic
```


```
STACK:
```

```
-dictionary-
/Pscript_WinNT_Compat
-dictionary-
```

005010-01

VIEW FROM OUTSIDE OF MOTOR AT SWITCH END.



				TOLERANCES UNLESS SPECIFIED		 <b>Regal Beloit America, Inc.</b>			DRAWN RDW 04/12/02			
				DEC.	INCHES				CHK			
				.X	±.1				APPD			
				.XX	±.01				SCALE 1=1			
				.XXX	±.005	TITLE EXTERNAL WIRING DIAGRAM 3 PHASE W/O PROTECTOR			REF FIG.2-51			
A	UPDATED TO REGAL LOGO	SAJ 06/26/15	AJY	.XXXX	±.0005				MAT'L. DECAL - 004014			FMF
NO.	REVISION	BY & DATE	CHK	ANG	±1/2"	FINISH			PREV			
THIS DRAWING IN DESIGN AND DETAIL IS OUR PROPERTY AND MUST NOT BE USED EXCEPT IN CONNECTION WITH OUR WORK ALL RIGHTS OF DESIGN AND INVENTION ARE RESERVED THIS IS AN ELECTRONICALLY GENERATED DOCUMENT - DO NOT SCALE THIS PRINT				RFP 04/12/02		CAD FILE 00501001			SIZE A	DRAWING NO. 005010-01		REV A
				DIST BRF-NLV								