

PRODUCT INFORMATION PACKET



Model No: G150261.22

Catalog No: G150261.22

General Purpose Motors, TEFC, 15 HP, 3 Ph, 60 Hz, 208-230/460 V, 840 RPM, 286T

General Purpose Motors



Regal and Leeson are trademarks of Regal Rexnord Corporation or one of its affiliated companies.

©2022 Regal Rexnord Corporation, All Rights Reserved. MC017097E





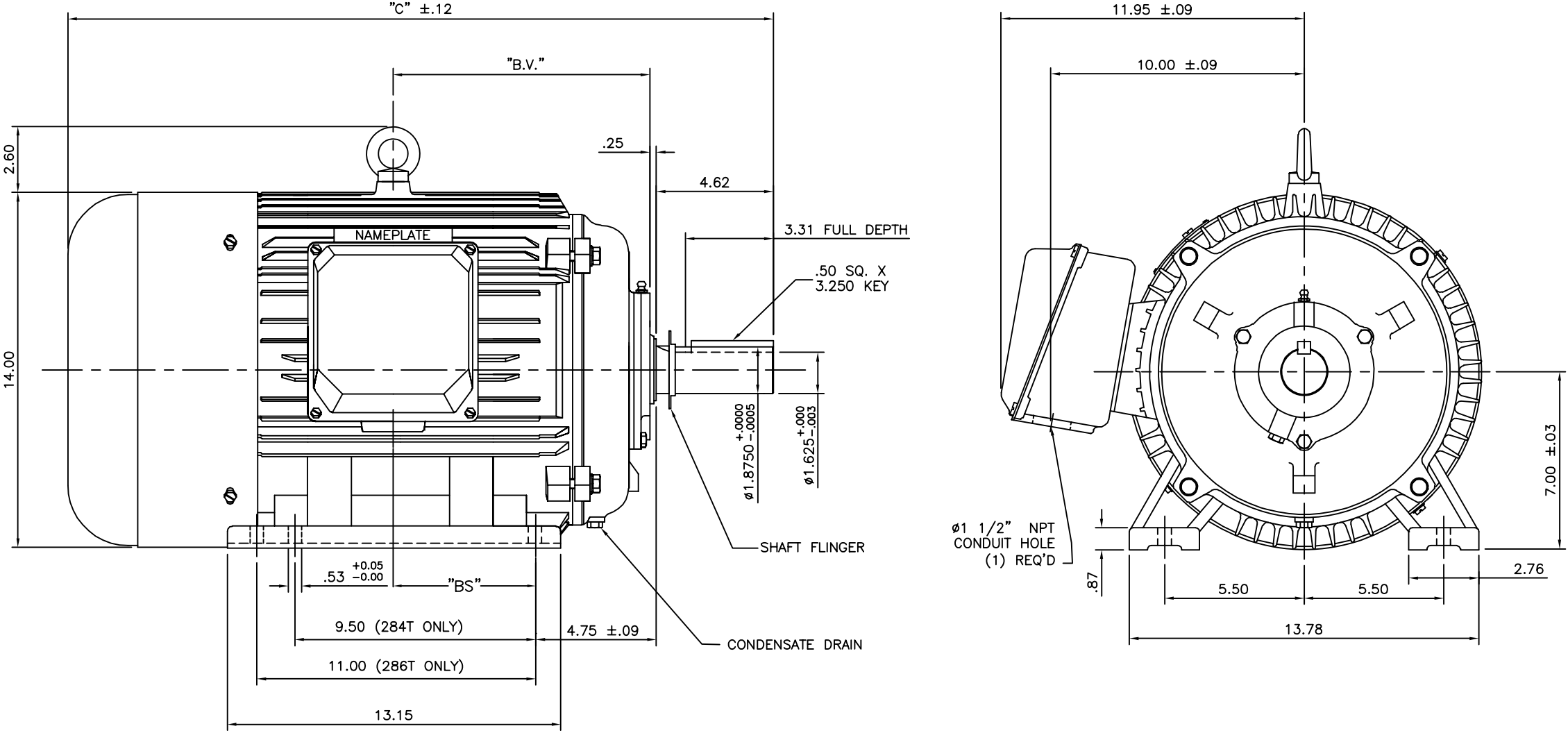
Nameplate Specifications

Output HP	15 Hp	Output KW	11.2 kW
Frequency	60 Hz	Voltage	208-230/460 V
Current	40.0/20.0 A	Speed	840 rpm
Service Factor	1.15	Phase	3
Efficiency	91 %	Power Factor	75
Duty	Continuous	Insulation Class	??? PLT=NA
Design Code	B	KVA Code	K
Frame	286T	Enclosure	Totally Enclosed Fan Cooled
Thermal Protection	No	Ambient Temperature	40 °C
Drive End Bearing Size	6311	Opp Drive End Bearing Size	6309
UL	Recognized	CSA	Y
CE	Y	IP Code	43
Number of Speeds	1		

Technical Specifications

Electrical Type	Squirrel Cage Induction Run	Starting Method	Across The Line
Poles	8	Rotation	Reversible
Resistance Main	.6175 Ohms	Mounting	Rigid Base
Motor Orientation	Horizontal	Drive End Bearing	Ball
Opp Drive End Bearing	Ball	Frame Material	Cast Iron
Shaft Type	T	Overall Length	27.83 in
Shaft Diameter	1.875 in	Shaft Extension	4.62 in
Assembly/Box Mounting	F1/F2 CAPABLE		
Outline Drawing	16953960	Connection Drawing	004172.01

169539-60



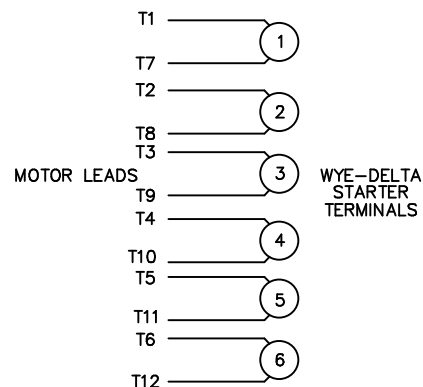
NOTE: 286T HAS 6 MTG. HOLES, USING 284T AND 286T LOCATIONS

FRAME DESIGN	"C"	"BV"	"BS"
284T	26.26	9.65	
286T	27.83	10.43	5.51

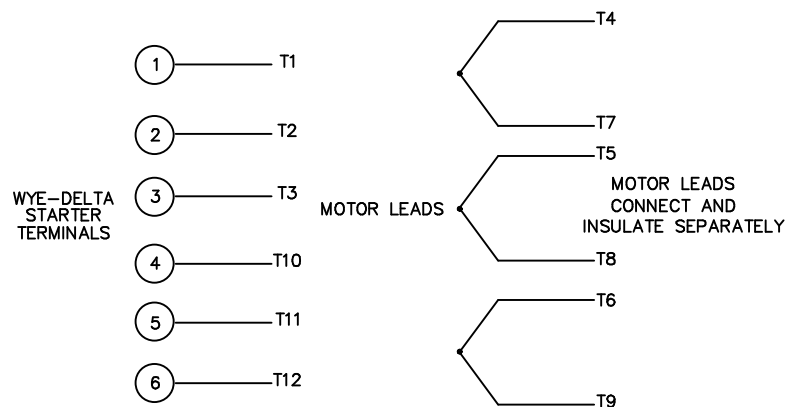
		TOLERANCES UNLESS SPECIFIED				DRAWN CJK 07/16/01	
		DEC.	INCHES			CHK	
		.X	±.1			APPD	
03	ECO-0048910, REVISED 'BA' DIM.	RFH 04/04/14	EH	.XX	±.03	TITLE OUTLINE-280T FRAME, TEFC-RIGID NEW CONDUIT BOX	
02	REDRAWN TO CURRENT CAD STANDARDS	CJK 07/13/99		.XXX	±.005		
01	ADDED HOLE FOR 286T BASE	JJK 11/01/01		.XXX	±.0005		
NO.	REVISION	BY & DATE	CHK	ANG	±1/2'	MAT'L. CAST IRON	
THIS DRAWING IN DESIGN AND DETAIL IS OUR PROPERTY AND MUST NOT BE USED EXCEPT IN CONNECTION WITH OUR WORK ALL RIGHTS OF DESIGN AND INVENTION ARE RESERVED THIS IS AN ELECTRONICALLY GENERATED DOCUMENT - DO NOT SCALE THIS PRINT				FINISH		PREV	
				RFP		CAD FILE	
				DIST		SIZE A	DRAWING NO. 169539-60
						PAGE OF	REV. 0.3

WYE - DELTA STARTING USEABLE ON 2,4 AND 6 POLE MOTORS.

LOW VOLTAGE CONNECTION

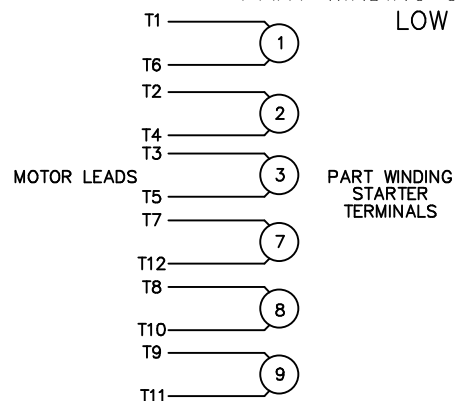


HIGH VOLTAGE CONNECTION



REFER TO THE WYE-DELTA STARTER CONNECTION INSTRUCTIONS FOR PROPER CONNECTION OF POWER LINES TO STARTER.

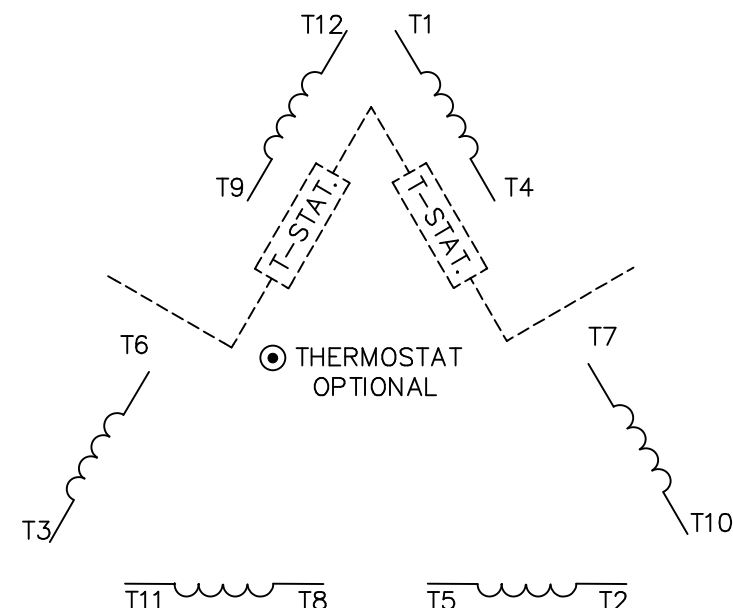
PART WINDING START USABLE ON 4 & 6 POLE MOTORS
LOW VOLTAGE CONNECTION ONLY



REFER TO THE PART WINDING
STARTER INSTRUCTIONS FOR PROPER
CONNECTION OF POWER LINES TO STARTER.

REFER TO THE CUTLER - HAMMER OR EQUIV. FOR
PROPER SELECTION OF OVERLOAD HEATER COILS.


LINE LEADS



ROTATION CAN BE REVERSED BY
INTERCHANGING ANY TWO LINE LEADS
● RED LEADS OR P1, P2, FOR N/C THERMOSTAT

ACROSS THE LINE START & RUN

	LINE 1	LINE 2	LINE 3	JOIN & INSULATE SEPARATELY
HIGH VOLT	T1,T12	T2,T10	T3,T11	(T4,T7) (T5,T8) (T6,T9)
LOW VOLT	T1,T6 T7,T12	T2,T4 T8,T10	T3,T5 T9,T11	

				TOLERANCES UNLESS SPECIFIED		 ELECTRIC MOTORS GEARMOTORS AND DRIVES		DRAWN WLW 09/08/77	
				DEC.	INCHES			CHK RPB 09/12/77	
				.X	±.1			APPD JCW 09/12/77	
03	REV'D LOW VOLTAGE CONN. LEADS PER ELEC.	BJB 06/07/00		.XX	±.01	TITLE DELTA – WYE CONNECTION DIAGRAM		SCALE 1=1	
02	ADDED T–STAT. NOTES PER ELECTRICAL	KMM 06/02/98		.XXX	±.005			REF	
01	REDRAWN TO CAD	DBT 06/02/97		.XXXX	±.0005	MAT'L.		FMF	
NO.	REVISION	BY & DATE	CHK	ANG	±1/2"	FINISH		PREV	
THIS DRAWING IN DESIGN AND DETAIL IS OUR PROPERTY AND MUST NOT BE USED EXCEPT IN CONNECTION WITH OUR WORK ALL RIGHTS OF DESIGN AND INVENTION ARE RESERVED THIS IS AN ELECTRONICALLY GENERATED DOCUMENT – DO NOT SCALE THIS PRINT			RFP		CAD FILE 00417201		SIZE	DRAWING NO.	REV.
			DIST				A	004172–01	03



CERTIFICATION DATA SHEET

**1051 CHEYENNE AVE.
GRAFTON, WI 53024
PH. 262-377-8810**

CONN. DIAGRAM: 004172.01

CATALOG #: G150261.22

OUTLINE: 16953960

MOUNTING: F1/F2 CAPABLE

WINDING #: T14508001 FR 3 A

TYPICAL MOTOR PERFORMANCE DATA

HP	kW	SYNC. RPM	F.L. RPM	FRAME	ENCLOSURE	KVA CODE	DESIGN
15	11.2	900	840	286T	TEFC	K	B

PH	Hz	VOLTS	AMPS	START TYPE	DUTY	INSL	S.F.	AMB°C
3	60	208-230/460	40/20	ACROSS THE LINE	CONTINUOUS	??? PLT=NA	1.15	40

FULL LOAD EFF:	91	3/4 LOAD EFF:	90.8	1/2 LOAD EFF:	89.2	GTD. EFF		ELEC. TYPE
FULL LOAD PF:	75	3/4 LOAD PF:	68.2	1/2 LOAD PF:	55.8	-		SQ CAGE IND RUN

F.L. TORQUE	LOCKED ROTOR AMPS	L.R. TORQUE	B.D. TORQUE	F.L. RISE°C
89.98 LB-FT	302 / 151	243.9 LB-FT 260 %	331.1 LB-FT 353 %	0

SOUND PRESSURE @ 3 FT.	SOUND POWER	ROTOR WK^2	MAX. WK^2	SAFE STALL TIME	STARTS / HOUR	APPROX. MOTOR WGT
- dBA	- dBA	7.264 LB-FT^2	- LB-FT^2	- SEC.	-	- LBS.

*** SUPPLEMENTAL INFORMATION ***

DE BRACKET TYPE	ODE BRACKET TYPE	MOUNT TYPE	ORIENTATION	SEVERE DUTY	HAZARDOUS LOCATION	DRIP COVER	SCREENS	PAINT
STANDARD	STANDARD	RIGID	HORIZONTAL	FALSE	NONE	FALSE	NONE	BLUE (ENAMEL)

BEARINGS		GREASE	SHAFT TYPE	SPECIAL DE	SPECIAL ODE	SHAFT MATERIAL	FRAME MATERIAL
DE	ODE						
BALL	BALL	POLYREX EM	T	NONE	NONE	AISI 1045 (C-240)	CAST IRON
6311	6309						

THERMO-PROTECTORS				THERMISTORS	CONTROL	SPACE HEATERS
THERMOSTATS	PROTECTORS	WDG RTDs	BRG RTDs			
NONE	NOT	NONE	NONE	NONE	FALSE	NONE VOLTS

*

N

O

T

E

S

INVERTER TORQUE: NONE
INV. HP SPEED RANGE: NONE

ENCODER: NONE
NONE NONE
NONE NONE PPR

BRAKE: NONE NONE
NONE P/N NONE
NONE NONE
FT-LB NONE V NONE Hz

Data Sheet

Date: 1/31/2018

G150261.22



Data @ 460 V

Motor Load Data

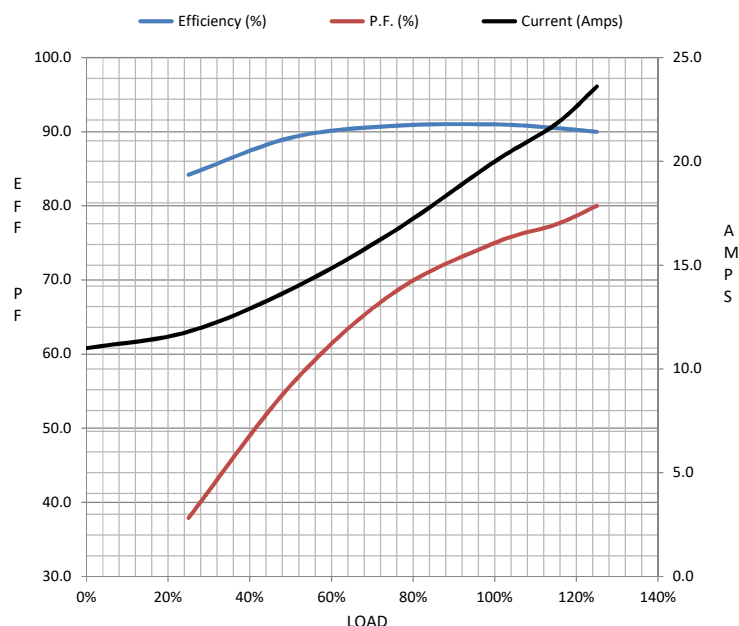
Load	0%	25%	50%	75%	100%	115%	125%	LR	
Current (Amps)	11.0	11.8	13.8	16.6	20.0	21.8	23.6	151	
Torque (ft-lb)	0.00	23.1	45.7	7.7	90.0	101	112	244	
RPM	900	896	892	888	884	882	880	0	
Efficiency (%)		84.2	89.2	90.8	91.0	90.5	90.0		
P.F. (%)	22.0	37.9	55.8	68.2	75.0	77.5	80.0	0.0	

Motor Speed Data

	LR	Pull-Up	BD	Rated	Idle
Speed (RPM)	0	450	828	884	900
Current (Amps)	151	139	90.6	20.0	11.0
Torque (ft-lb)	244	208	331	90.0	0.00

Information Block

HP	15.0			
Sync. RPM	900			
Frame	284			
Enclosure	TEFC			
Construction	TFC			
Voltage	208-230/460 V			
Frequency	60 Hz			
Design	A			
LR Code letter	K			
Service Factor	1.15			
Temp Rise @ FL	40 °C			
Duty	CONT			
Ambient	40 °C			
Elevation	1,000 feet			
Rotor/Shaft wk²	7.3 Lb-Ft²			
Ref Wdg	T14508001 FR			
Sound Pressure @ 1M	999 dBA			
VFD Rating	NONE			
Outline Dwg	16953960			
Conn. Diag	004172.01			
Additional Specifications:				
0				
0				
EQUIV CKT (OHMS / PHASE)				
R1	R2	X1	X2	Xm
0.0000	0.0000	0.0000	0.0000	0.0000



Speed - Torque Curve

