

# PRODUCT INFORMATION PACKET



Model No: G150035.60

Catalog No: G150035.60

DISOLETE - REPLACED BY 170035.60 - 25/20HP..3545/2945RPM.284.TEFC.208-230/460V.3PH.60/50HZ.CONT.NOT  
.40C.1.15/1.15SF.RIGID.GENERAL PURPOSE.C284T34FB7C

Regal and Leeson are trademarks of Regal Rexnord Corporation or one of its affiliated companies.

©2023 Regal Rexnord Corporation, All Rights Reserved. MC017097E





## Nameplate Specifications

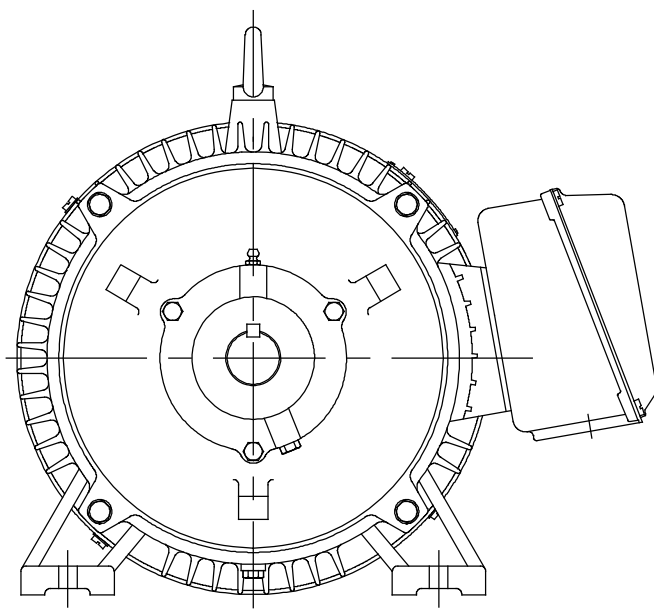
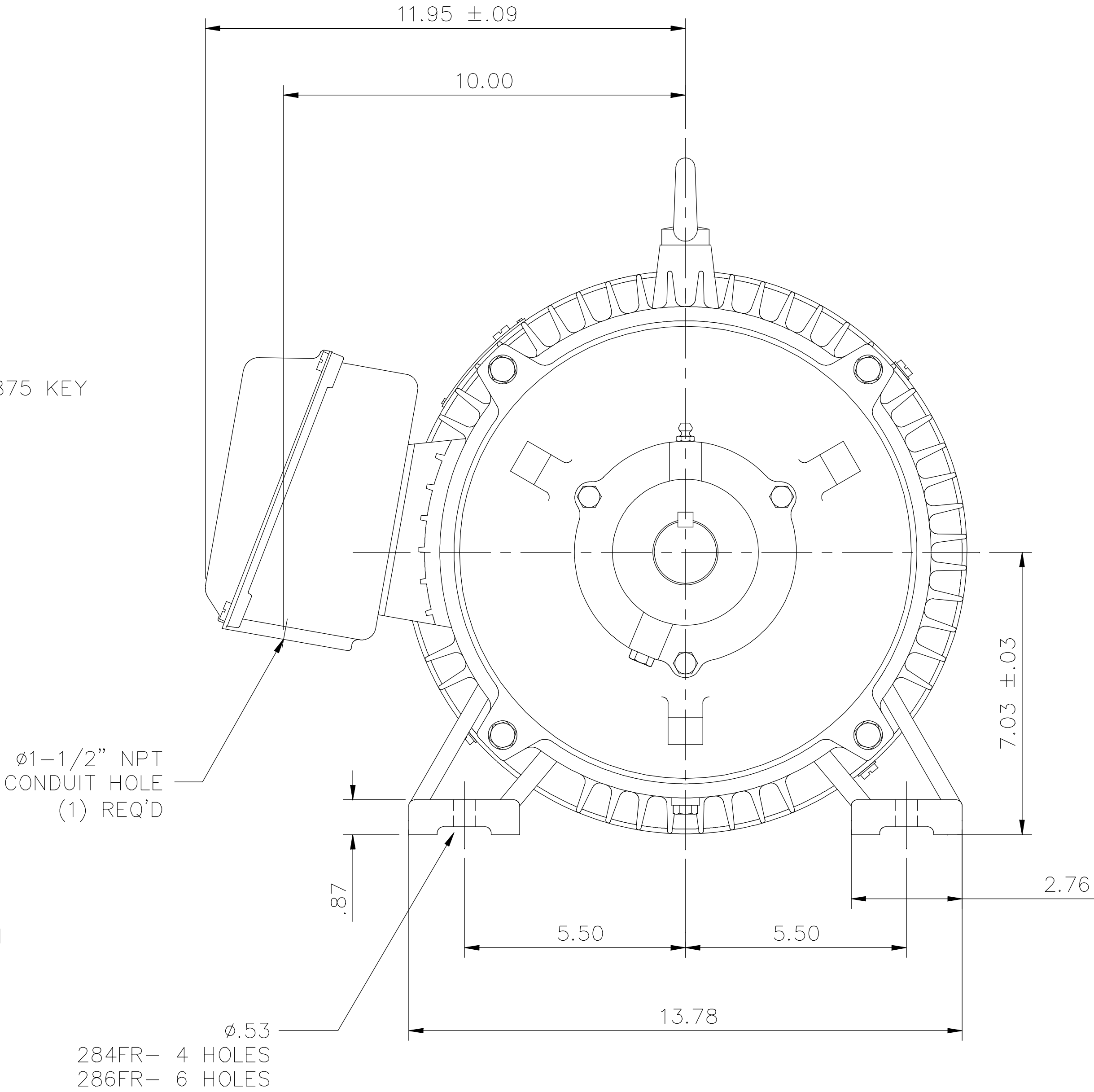
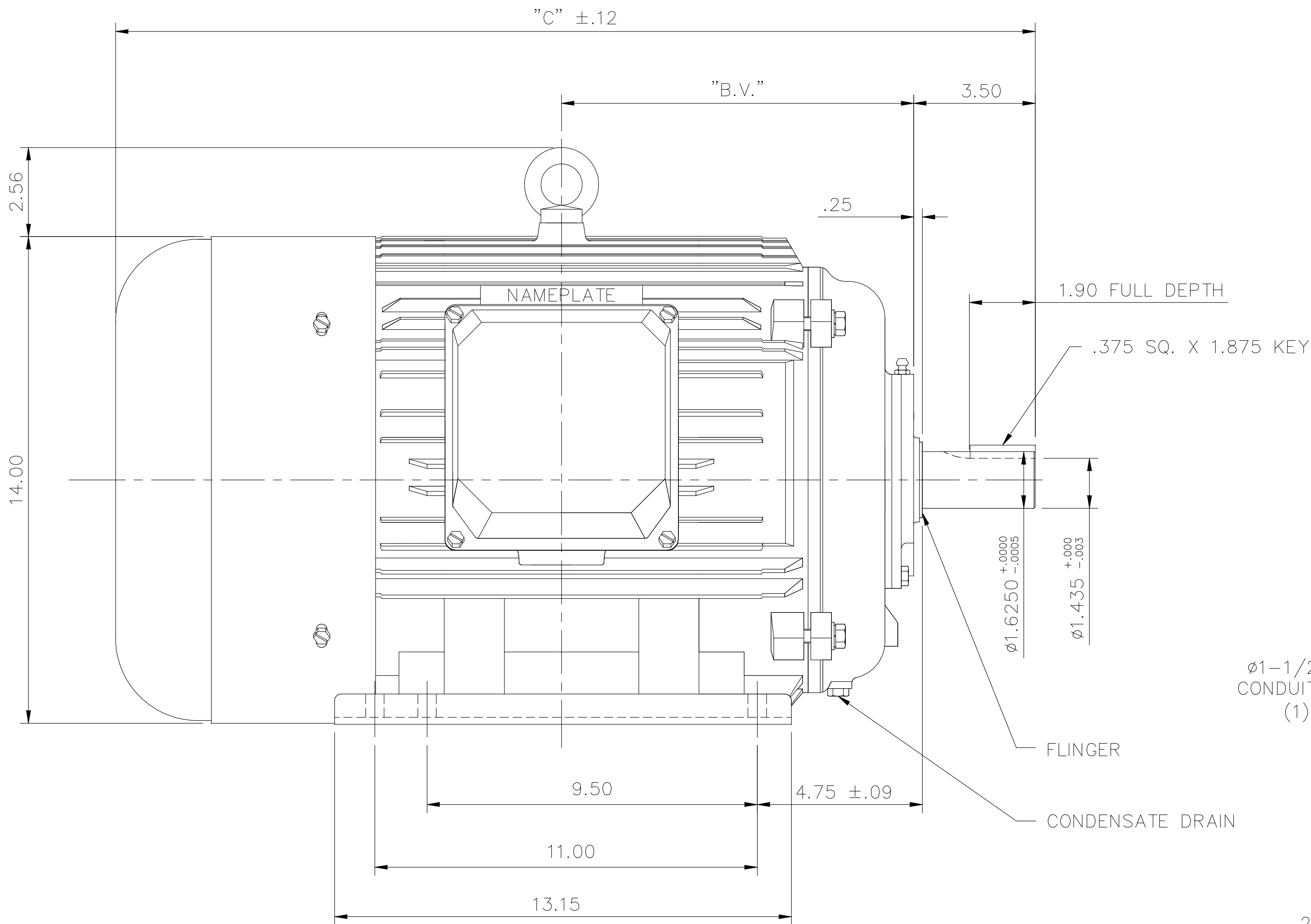
Phase	3	Output HP	25 & 20 Hp
Output KW	18.7 & 14.9 kW	Voltage	208-230/460 & 190/380 V
Speed	3545 & 2945 rpm	Service Factor	1.25 & 1.15
Frame	284TS	Enclosure	Totally Enclosed Fan Cooled
Thermal Protection	No Protection	Efficiency	91 & 91.0 %
Ambient Temperature	40 °C	Frequency	60 & 50 Hz
Current	64-58.2/29.1 & 55.2/27.6 A	Power Factor	88.3
Duty	Continuous	Insulation Class	F
Design Code	B	KVA Code	G
Drive End Bearing Size	6311	Opp Drive End Bearing Size	6309
UL	Recognized	CSA	Y
CE	Y	IP Code	43
Number of Speeds	1		

## Technical Specifications

Electrical Type	Squirrel Cage Induction Run	Starting Method	Across The Line
Poles	2	Rotation	Reversible
Resistance Main	.082 Ohms	Mounting	Rigid Base
Motor Orientation	Nan	Drive End Bearing	Ball
Opp Drive End Bearing	Ball	Frame Material	Cast Iron
Shaft Type	TS	Assembly/Box Mounting	NAN
Outline Drawing	16954060	Connection Drawing	004172.01


This is an uncontrolled document once printed or downloaded and is subject to change without notice. Date Created:06/22/2023

169540-60



F2 VIEW

FRAME DESIGN	"C"	"BV"
284TS	24.88	4.72
286TS	26.46	3.97

				TOLERANCES UNLESS SPECIFIED		 <b>REGAL-BELOIT CORPORATION</b>	DRAWN JJK 03/29/99			
				DEC.	INCHES		CHK			
H	ADDED F2 VIEW ECO-0134445	WGJ 11/10/2017	EMH	.X	±.1		APPD	PG	03/31/99	
03	REMOVED REFERENCE TO 250 FRAME	MOL 08/15/2012		.XX	±.03	TITLE OUTLINE-280TS FRAME, TEFC-RIGID NEW CONDUIT BOX	SCALE	1=4		
02	REDRAWN TO CURRENT CAD STANDARDS	CJK 11/1/01		.XXX	±.005		REF			
01	ADDED HOLES 286TS BASE	JJK 07/13/99		.XXXX	±.0005	MAT'L. CAST IRON	FMF			
NO.	REVISION	BY & DATE	CHK	ANG	±7°30"	FINISH	PREV			
THIS DRAWING IN DESIGN AND DETAIL IS OUR PROPERTY AND MUST NOT BE USED EXCEPT IN CONNECTION WITH OUR WORK ALL RIGHTS OF DESIGN AND INVENTION ARE RESERVED THIS IS AN ELECTRONICALLY GENERATED DOCUMENT – DO NOT SCALE THIS PRINT			RFP		CAD FILE 16954060		SIZE	DRAWING NO.	PAGE OF	REV.
			DIST				B	169540-60		H

## WYE - DELTA STARTING USEABLE ON 2,4 AND 6 POLE MOTORS.

## LOW VOLTAGE CONNECTION

## HIGH VOLTAGE CONNECTION



REFER TO THE WYE-DELTA STARTER CONNECTION INSTRUCTIONS FOR PROPER CONNECTION OF POWER LINES TO STARTER.

PART WINDING START USABLE ON 4 & 6 POLE MOTORS  
LOW VOLTAGE CONNECTION ONLY

REFER TO THE PART WINDING STARTER INSTRUCTIONS FOR PROPER CONNECTION OF POWER LINES TO STARTER.

REFER TO THE CUTLER - HAMMER OR EQUIV. FOR PROPER SELECTION OF OVERLOAD HEATER COILS.

## LINE LEADS



ROTATION CAN BE REVERSED BY INTERCHANGING ANY TWO LINE LEADS  
● RED LEADS OR P1, P2, FOR N/C THERMOSTAT

## ACROSS THE LINE START &amp; RUN

	LINE 1	LINE 2	LINE 3	JOIN & INSULATE SEPARATELY
HIGH VOLT	T1,T12	T2,T10	T3,T11	(T4,T7) (T5,T8) (T6,T9)
LOW VOLT	T1,T6 T7,T12	T2,T4 T8,T10	T3,T5 T9,T11	

TOLERANCES  
UNLESS SPECIFIED

DEC. INCHES

.X ±.1

.XX ±.01

.XXX ±.005

.XXXX ±.0005

ANG ±1/2"



ELECTRIC MOTORS  
GEARMOTORS  
AND DRIVES

DRAWN WLW 09/08/77

CHK RPB 09/12/77

APPD JCW 09/12/77

TITLE DELTA - WYE CONNECTION DIAGRAM

SCALE 1=1

REF

FMF

PREV

03 REV'D LOW VOLTAGE CONN. LEADS PER ELEC.

BJB 06/07/00

02 ADDED T-STAT. NOTES PER ELECTRICAL

KMM 06/02/98

01 REDRAWN TO CAD

DBT 06/02/97

NO. REVISION

BY &amp; DATE

CHK

ANG

±1/2"

FINISH

THIS DRAWING IN DESIGN AND DETAIL IS OUR PROPERTY AND MUST NOT BE USED EXCEPT IN CONNECTION WITH OUR WORK ALL RIGHTS OF DESIGN AND INVENTION ARE RESERVED THIS IS AN ELECTRONICALLY GENERATED DOCUMENT - DO NOT SCALE THIS PRINT

RFP

DIST

CAD FILE 00417201

SIZE

A

DRAWING NO.

004172-01

REV.

03