

PRODUCT INFORMATION PACKET



Model No: G140738.00

Catalog No: G140738.00

Obsolete,

replaced by 141357.00 - .15HP..3600RPM.215TC.TEFC.230/460V.3PH.60HZ.CONT.40C..C FACE LESS BASE.....

Regal and Leeson are trademarks of Regal Rexnord Corporation or one of its affiliated companies.

©2023 Regal Rexnord Corporation, All Rights Reserved. MC017097E





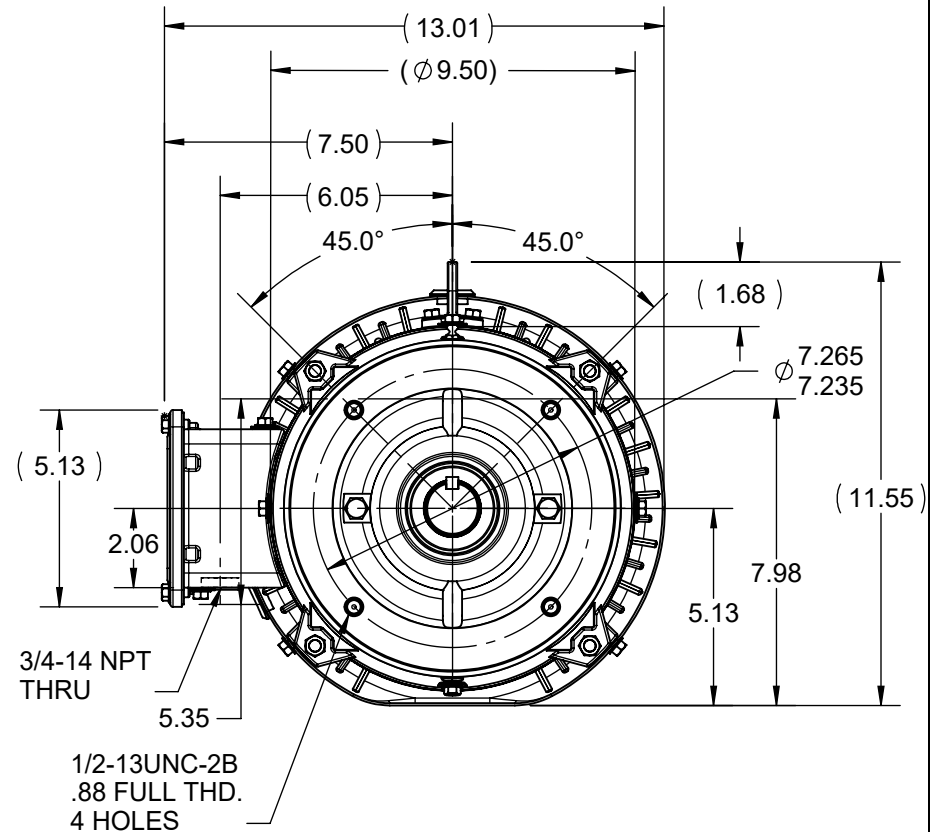
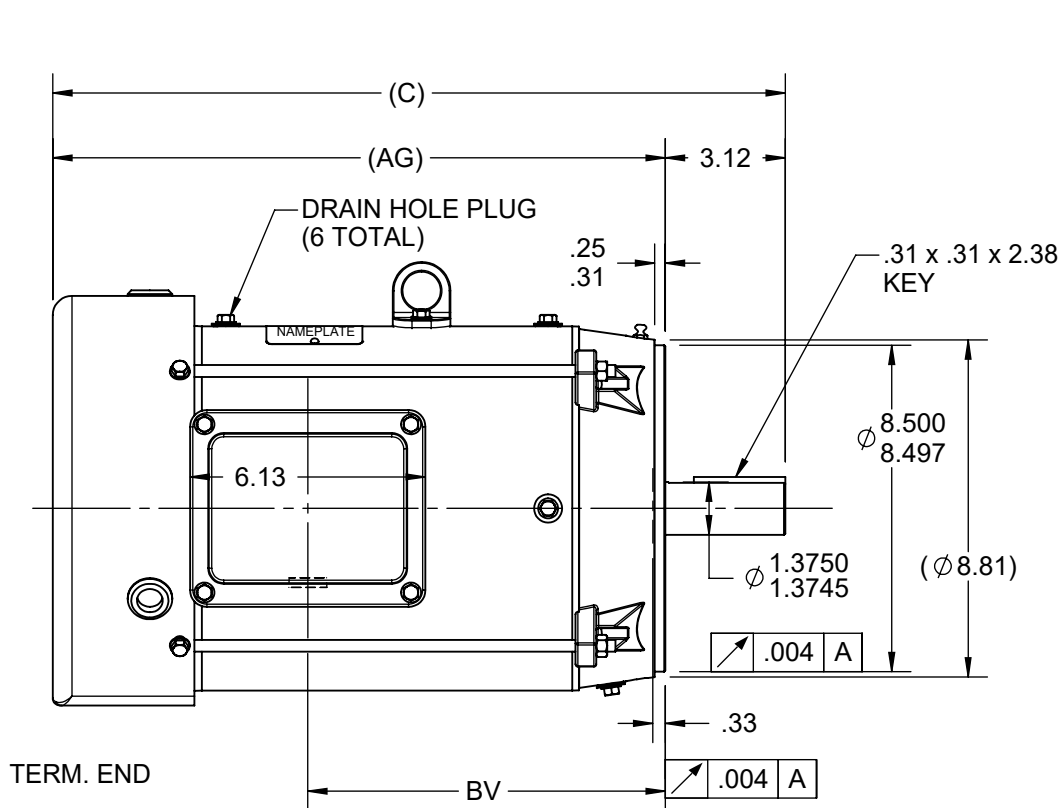
Nameplate Specifications

Phase	3	Output HP	15 & 10 Hp
Output KW	11.2 & 7.5 kW	Voltage	230/460 & 190/380 V
Speed	3520 & 2940 rpm	Service Factor	1.15 & 1.15
Frame	215TC	Enclosure	Totally Enclosed Fan Cooled
Thermal Protection	No Protection	Efficiency	90.2 & 89.5 %
Ambient Temperature	40 °C	Frequency	60 & 50 Hz
Current	36/18 & 30/15 A	Power Factor	87
Duty	Continuous	Insulation Class	F
Design Code	B	KVA Code	G
Drive End Bearing Size	309	Opp Drive End Bearing Size	206
UL	Recognized	CSA	Y
CE	Y	IP Code	55
Number of Speeds	1		

Technical Specifications

Electrical Type	Squirrel Cage Inverter Rated	Starting Method	Line Or Inverter
Poles	2	Rotation	Reversible
Resistance Main	.6 Ohms	Mounting	Round
Motor Orientation	Horizontal	Drive End Bearing	Ball
Opp Drive End Bearing	Ball	Frame Material	Rolled Steel
Shaft Type	T	Assembly/Box Mounting	F1/F2 CAPABLE
Inverter Load	VARIABLE 10:1		
Outline Drawing	A-SS88922LE-1115	Connection Drawing	A-EE7308-LE

This is an uncontrolled document once printed or downloaded and is subject to change without notice. Date Created:06/22/2023



NOTES:

- 1- NAMEPLATE TO BE READ FROM C'BOX SIDE OF MOTOR.
- 2- C'BOX CAN BE MOUNTED ON OPPOSITE SIDE BY REMOVING BRACKETS AND TURNING FRAME 180° (EXCEPT AS NOTED).
- 3- DASH 965 TO BE READ FROM OPPOSITE SHAFT END.

DASH	FRAME	C	AG	BV	MOUNTING
965	213T	19.08	15.96	9.26	
1115	213/15T	20.58	17.46	10.76	
1240	213/15T	21.83	18.71	12.01	F1 ONLY

DRAWING REVISION H	REVISION BY K.RAJESH	REV DATE/© DATE 08/10/2021
REQUEST NUMBER CR-0004806	APPROVED BY NIV	DATE 08/10/2021

REQUEST NUMBER DESCRIPTION
UPDATE AS PER 3D MODEL

COPYRIGHT (PER REVISION DATE) REGAL BELOIT AMERICA, INC. ALL RIGHTS RESERVED. PROPRIETARY AND CONFIDENTIAL INFORMATION - THIS DOCUMENT IS THE PROPERTY OF REGAL BELOIT AMERICA, INC. ("OWNER") AND CONTAINS OWNER'S PROPRIETARY INFORMATION. ANY PERSON, CORPORATION OR OTHER FIRM RECEIVING IT IS DEEMED, BY RECEIVING IT, TO AGREE THAT IT, AND/OR ANY PART OF IT, SHALL NOT BE DISCLOSED TO ANY PERSON, CORPORATION OR OTHER ENTITY, DUPLICATED, AND/OR USED, EXCEPT AS EXPRESSLY APPROVED IN WRITING IN ADVANCE BY OWNER. THIS DOCUMENT SHALL BE RETURNED TO OWNER UPON REQUEST. IT MAY BE SUBJECT TO CERTAIN RESTRICTIONS UNDER APPLICABLE EXPORT CONTROL LAWS AND REGULATIONS.

TOLERANCES (EXCEPT AS NOTED):
 DEC. INCH mm ANGLE
 .X ±0.1 [±3] ±7' 30"
 .XX ±0.03 [±0.8]
 .XXX ±0.005 [±0.13]
 .XXXX ±0.0005 [±0.013]
 REMOVE BURRS & BREAK SHARP EDGES: .003/.015 [.08/.38] X 45°
 CORNER FILLETS: R.02 [.5]
 MACHINED SURFACES: 200/ 5.1
 INCH mm
 mm DIMENSIONS IN [BRACKETS] ARE FOR REFERENCE ONLY

DRAWN BY TJB	DATE 19/08/2003
APPROVED BY DR	DATE 21/08/2003
REFERENCE	THIRD ANGLE PROJECTION

Regal Beloit America, Inc.	
DESCRIPTION 210 FR. - BB - TS - TEFC - R/S - C'FACE	
MATERIAL	PROCESS/FINISH
SIZE A	DRAWING NUMBER SS88922LE
SHEET 1 OF 1	

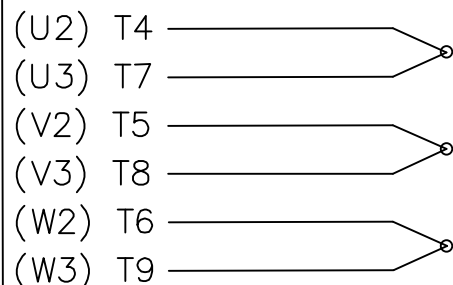
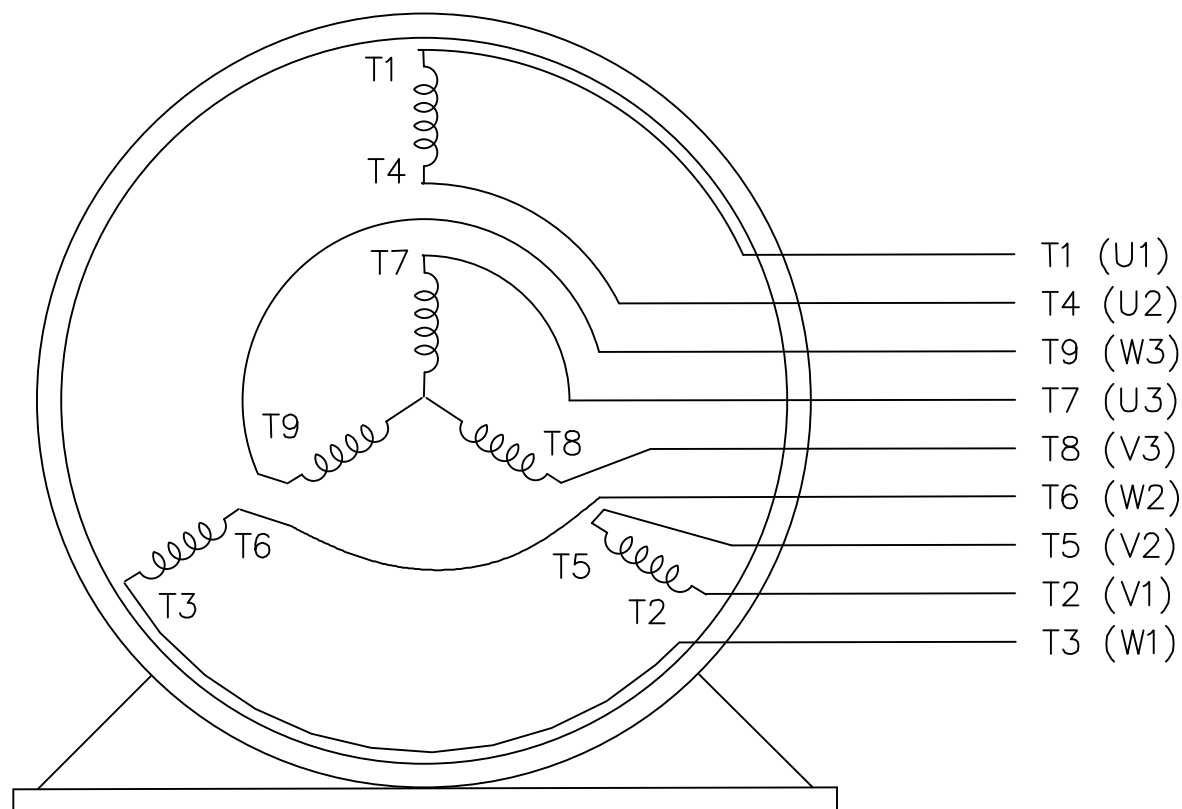


Diagram illustrating a 3-to-1 multiplexer structure with three 2-to-1 sub-multiplexers:


- Sub-multiplexer 1: Inputs (U1) T1 and (U3) T7; Output L1.
- Sub-multiplexer 2: Inputs (V1) T2 and (V3) T8; Output L2.
- Sub-multiplexer 3: Inputs (W1) T3 and (W3) T9; Output L3.
- Sub-multiplexer 4: Inputs (U2) T4, (V2) T5, and (W2) T6; Output L3.



VIEW OF TERMINAL END

REF.
WINDING DIAGRAM

T8Y, T2Y, T2BL, T4BX, T2EC, T2G
T6BZ, T2B, T6BL, T4AV, T6B, T4B

				TOLERANCES UNLESS SPECIFIED				ELECTRIC MOTORS GEARMOTORS AND DRIVES			DRAWN HLB 04-29-2002			
				DEC.	INCHES			CHK	ML	05-03-2002				
				.X	±.1			APPD	GK	05-03-2002				
				.XX	±.01			TITLE CONNECTION DIAGRAM 3Ø – DUAL VOLTAGE MOTOR			SCALE	1=1		
2	ADDED IEC NOTATIONS... (U1), (V1) ETC. (MU105786)	REP 01-11-2012	DR	.XXX	±.005					REF				
1	NEW DRAWING	HLB 05-03-2002	ML	.XXXX	±.0005		MAT'L.			FMF				
NO.	REVISION	BY & DATE	CHK	ANG	±1/2"		FINISH			PREV				
THIS DRAWING IN DESIGN AND DETAIL IS OUR PROPERTY AND MUST NOT BE USED EXCEPT IN CONNECTION WITH OUR WORK ALL RIGHTS OF DESIGN AND INVENTION ARE RESERVED THIS IS AN ELECTRONICALLY GENERATED DOCUMENT – DO NOT SCALE THIS PRINT				RFP			CAD FILE EE7308-LE			SIZE	DRAWING NO.	PAGE	OF	REV.
				DIST LB-WP						A	EE7308-LE			2