

# PRODUCT INFORMATION PACKET



Model No: G140737.00

Catalog No: G140737.00

Obsolete,

replaced by 141269.00 - .10HP..3525RPM.215TC.TEFC.230/460V..60HZ.CONT.40C..C-FACE.....WASHGUARD.....

Regal and Leeson are trademarks of Regal Rexnord Corporation or one of its affiliated companies.

©2023 Regal Rexnord Corporation, All Rights Reserved. MC017097E





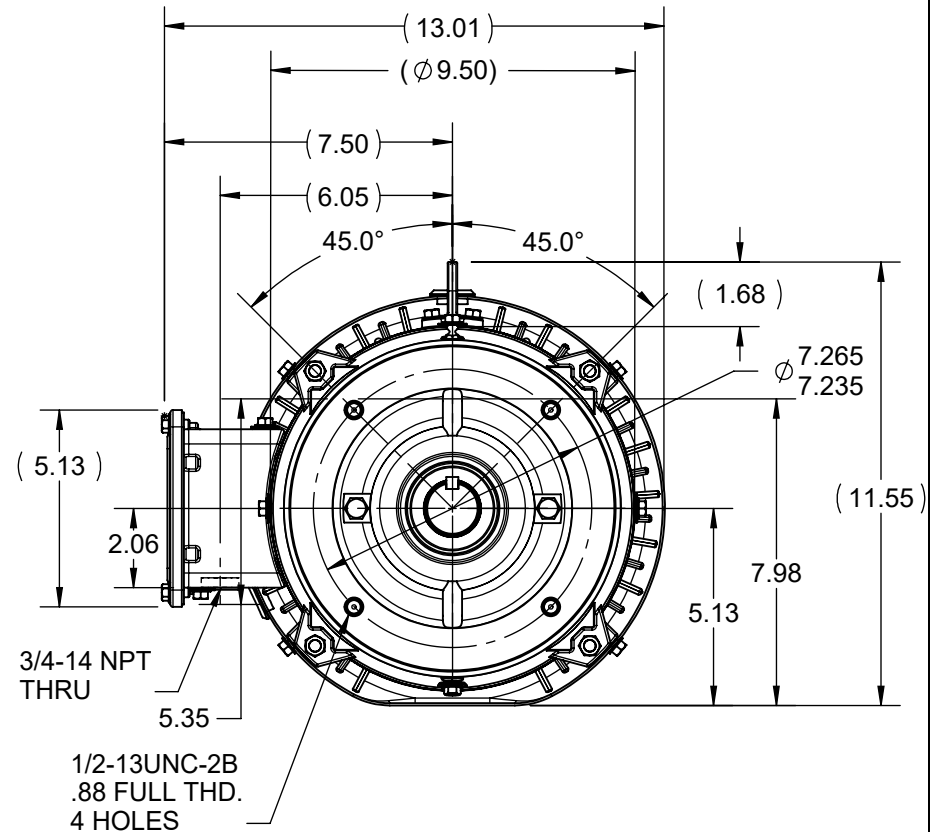
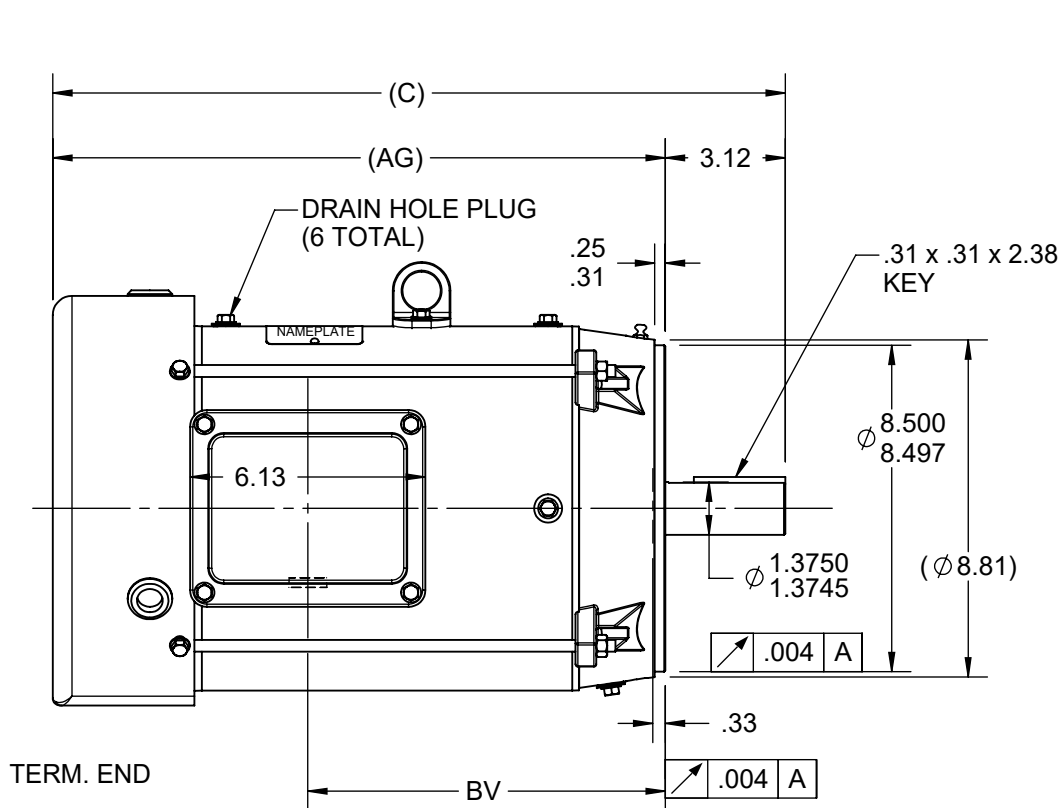
### Nameplate Specifications

Phase	3	Output HP	10 & 7.50 Hp
Output KW	7.5 & 5.6 kW	Voltage	230/460 & 190/380 V
Speed	3535 & 2940 rpm	Service Factor	1.15 & 1.15
Frame	215TC	Enclosure	Totally Enclosed Fan Cooled
Thermal Protection	No Protection	Efficiency	91.7 & 90.2 %
Ambient Temperature	40 °C	Frequency	60 & 50 Hz
Current	23.6/11.8 & 22/11 A	Power Factor	87
Duty	Continuous	Insulation Class	F
Design Code	B	KVA Code	H
Drive End Bearing Size	309	Opp Drive End Bearing Size	206
UL	Recognized	CSA	Y
CE	Y	IP Code	55
Number of Speeds	1		

### Technical Specifications

Electrical Type	Squirrel Cage Induction Run	Starting Method	Across The Line
Poles	2	Rotation	Reversible
Resistance Main	.8 Ohms	Mounting	Round
Motor Orientation	Horizontal	Drive End Bearing	Ball
Opp Drive End Bearing	Ball	Frame Material	Rolled Steel
Shaft Type	T	Assembly/Box Mounting	F1/F2 CAPABLE
Outline Drawing	SS88922LE-1240	Connection Drawing	EE7308-LE

This is an uncontrolled document once printed or downloaded and is subject to change without notice. Date Created:06/22/2023



#### NOTES:

- 1- NAMEPLATE TO BE READ FROM C'BOX SIDE OF MOTOR.
- 2- C'BOX CAN BE MOUNTED ON OPPOSITE SIDE BY REMOVING BRACKETS AND TURNING FRAME 180° (EXCEPT AS NOTED).
- 3- DASH 965 TO BE READ FROM OPPOSITE SHAFT END.

DASH	FRAME	C	AG	BV	MOUNTING
965	213T	19.08	15.96	9.26	
1115	213/15T	20.58	17.46	10.76	
1240	213/15T	21.83	18.71	12.01	F1 ONLY

DRAWING REVISION H	REVISION BY K.RAJESH	REV DATE/© DATE 08/10/2021
REQUEST NUMBER CR-0004806	APPROVED BY NIV	DATE 08/10/2021

REQUEST NUMBER DESCRIPTION  
UPDATE AS PER 3D MODEL

COPYRIGHT (PER REVISION DATE) REGAL BELOIT AMERICA, INC. ALL RIGHTS RESERVED. PROPRIETARY AND CONFIDENTIAL INFORMATION - THIS DOCUMENT IS THE PROPERTY OF REGAL BELOIT AMERICA, INC. ("OWNER") AND CONTAINS OWNER'S PROPRIETARY INFORMATION. ANY PERSON, CORPORATION OR OTHER FIRM RECEIVING IT IS DEEMED, BY RECEIVING IT, TO AGREE THAT IT, AND/OR ANY PART OF IT, SHALL NOT BE DISCLOSED TO ANY PERSON, CORPORATION OR OTHER ENTITY, DUPLICATED, AND/OR USED, EXCEPT AS EXPRESSLY APPROVED IN WRITING IN ADVANCE BY OWNER. THIS DOCUMENT SHALL BE RETURNED TO OWNER UPON REQUEST. IT MAY BE SUBJECT TO CERTAIN RESTRICTIONS UNDER APPLICABLE EXPORT CONTROL LAWS AND REGULATIONS.

TOLERANCES (EXCEPT AS NOTED):  
 DEC. INCH mm ANGLE  
 .X ±0.1 [±3] ±7' 30"  
 .XX ±0.03 [±0.8]  
 .XXX ±0.005 [±0.13]  
 .XXXX ±0.0005 [±0.013]  
 REMOVE BURRS & BREAK SHARP EDGES: .003/.015 [.08/.38] X 45°  
 CORNER FILLETS: R.02 [.5]  
 MACHINED SURFACES: 200/ 5.1  
 INCH mm  
 mm DIMENSIONS IN [BRACKETS] ARE FOR REFERENCE ONLY

DRAWN BY TJB	DATE 19/08/2003
APPROVED BY DR	DATE 21/08/2003
REFERENCE	
THIRD ANGLE PROJECTION	

Regal Beloit America, Inc.	
DESCRIPTION <b>OUTLINE</b> 210 FR. - BB - TS - TEFC - R/S - C'FACE	
MATERIAL	PROCESS/FINISH
SIZE <b>A</b>	DRAWING NUMBER <b>SS88922LE</b>
SHEET 1 OF 1	

THREE PHASE  
DUAL VOLTAGE MOTOR

HIGH VOLTAGE



LOW VOLTAGE




T1 (U1)  
T4 (U2)  
T9 (W3)  
T7 (U3)  
T8 (V3)  
T6 (W2)  
T5 (V2)  
T2 (V1)  
T3 (W1)

VIEW OF TERMINAL END

REF.  
WINDING DIAGRAM

T8Y, T2Y, T2BL, T4BX, T2EC, T2G  
T6BZ, T2B, T6BL, T4AV, T6B, T4B

				TOLERANCES UNLESS SPECIFIED			ELECTRIC MOTORS GEARMOTORS AND DRIVES			DRAWN HLB 04-29-2002			
				DEC.	INCHES					CHK	ML	05-03-2002	
				.X	±.1					APPD	GK	05-03-2002	
				.XX	±.01					SCALE 1=1			
2	ADDED IEC NOTATIONS... (U1), (V1) ETC. (MU105786)	REP 01-11-2012	DR	.XXX	±.005	TITLE CONNECTION DIAGRAM 3Ø - DUAL VOLTAGE MOTOR			REF				
1	NEW DRAWING	HLB 05-03-2002	ML	.XXXX	±.0005	MAT'L.			FMF				
NO.	REVISION	BY & DATE	CHK	ANG	±1/2'	FINISH			PREV				
THIS DRAWING IN DESIGN AND DETAIL IS OUR PROPERTY AND MUST NOT BE USED EXCEPT IN CONNECTION WITH OUR WORK ALL RIGHTS OF DESIGN AND INVENTION ARE RESERVED THIS IS AN ELECTRONICALLY GENERATED DOCUMENT - DO NOT SCALE THIS PRINT			RFP			CAD FILE EE7308-LE			SIZE	DRAWING NO.	PAGE	OF	REV.
			DIST LB-WP						A	EE7308-LE			2