

PRODUCT INFORMATION PACKET



Model No: G140601.00

Catalog No: G140601.00

BSOLETE REPLACED BY 140601.00 - ..3HP..1170RPM.213.TEFC.230/460V.3PH.60HZ.CONT.40C.1.15SF.RIGID.C2
13T11FB2B.....BRAKEMOTOR.NOT.....

Regal and Leeson are trademarks of Regal Rexnord Corporation or one of its affiliated companies.

©2023 Regal Rexnord Corporation, All Rights Reserved. MC017097E





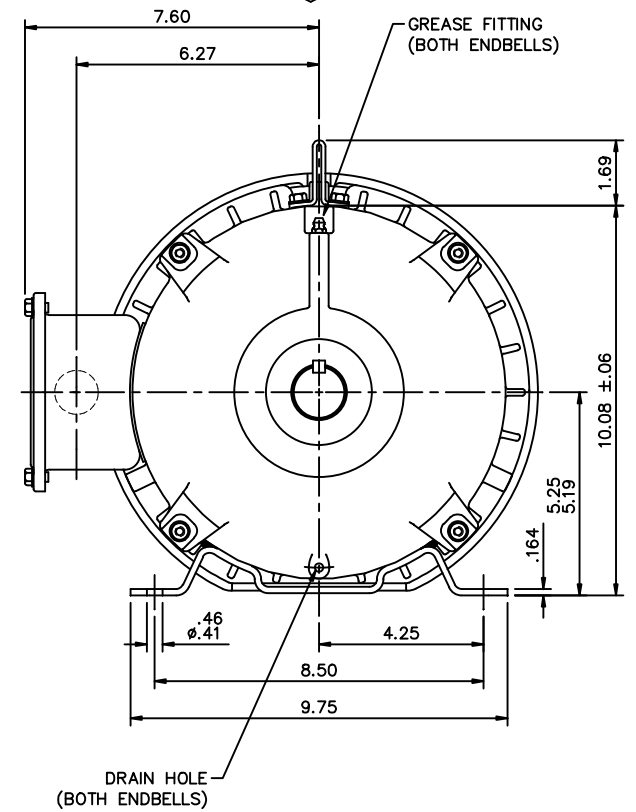
Nameplate Specifications

Phase	3	Output HP	3 & 2 Hp
Output KW	2.2 & 1.5 kW	Voltage	230/460 & 190/380 V
Speed	1170 & 975 rpm	Service Factor	1.15 & 1.15
Frame	213T	Enclosure	Totally Enclosed Fan Cooled
Thermal Protection	No Protection	Efficiency	87.5 %
Ambient Temperature	40 °C	Frequency	60 & 50 Hz
Current	14.4/7.2 & 14/7 A	Power Factor	50
Duty	Continuous	Insulation Class	F
Design Code	B	KVA Code	K
Drive End Bearing Size	6207	Opp Drive End Bearing Size	6206
UL	Recognized	CSA	Y
CE	Y	IP Code	43
Number of Speeds	1		


Technical Specifications

Electrical Type	Squirrel Cage Induction Run	Starting Method	Across The Line
Poles	6	Rotation	Reversible
Resistance Main	1.84 Ohms	Mounting	Rigid Base
Drive End Bearing	Ball	Opp Drive End Bearing	Ball
Frame Material	Rolled Steel	Shaft Type	T
Assembly/Box Mounting	VERIFY		
Outline Drawing	037632-1100	Connection Drawing	005010.15

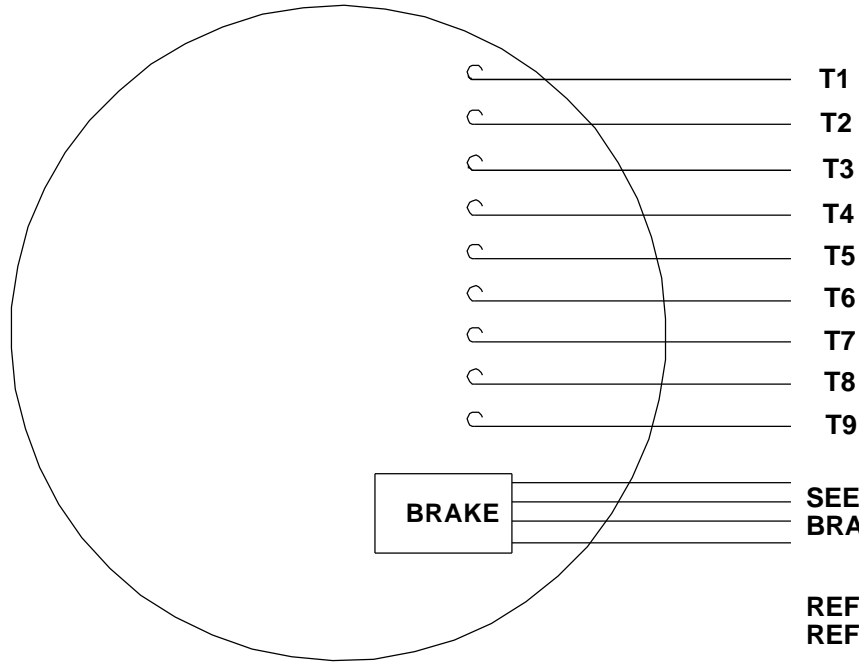
This is an uncontrolled document once printed or downloaded and is subject to change without notice. Date Created:06/22/2023



DASH NO.	"C"	"AD"
1100	27.00	5.50
1150	27.50	6.00
1200	28.00	6.50
1250	28.50	7.00
1300	29.00	7.50
1350	29.50	8.00
1400	30.00	8.50

						TOLERANCES UNLESS SPECIFIED		ELECTRIC MOTORS GEARMOTORS AND DRIVES	DRAWN RDW 6/22/05	
					DEC.	INCHES		CHK		
					.X	±.1		APPD SW 6/22/05		
					.XX	±.03		TITLE OUTLINE – 210TC FRAME TEFC – RIGID	SCALE 5=16	
					.XXX	±.005		REF		
					.XXXX	±.0005		MAT'L BRAKE MOTOR	FMF 140637	
NO.	REVISION	BY & DATE	CHK	ANG ±1/2"	FINISH				PREV	
THIS DRAWING IN DESIGN AND DETAIL IS OUR PROPERTY AND MUST NOT BE USED EXCEPT IN CONNECTION WITH OUR WORK ALL RIGHTS OF DESIGN AND INVENTION ARE RESERVED THIS IS AN ELECTRONICALLY GENERATED DOCUMENT – DO NOT SCALE THIS PRINT						RFP 6/22/05	CAD FILE 037632	SIZE B	DRAWING NO. 037632	REV.
				DIST NLV						

VIEW FROM OUTSIDE OF MOTOR AT SWITCH END.

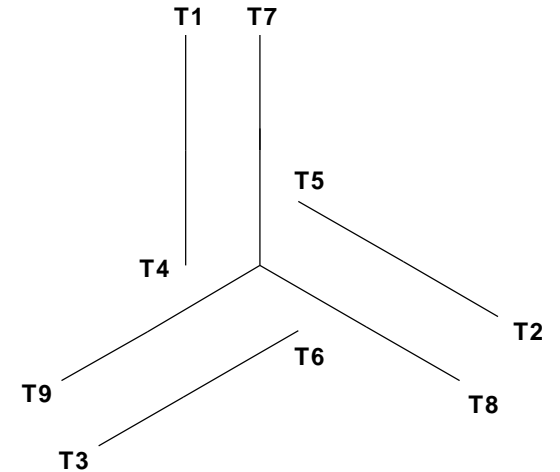


CAUTION:
LEAD WIRE INSULATION TO EXTEND
MINIMUM OF 1/4" INTO CONNECTOR
INSULATION

**SEE TABLE FOR
BRAKE CONNECTIONS**

REF. DECAL (MOTOR) - 004014
REF. DECAL (BRAKE) - 080034 (STEARNS & DINGS BRAKE)

LINE LEADS


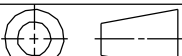


VOLTAGE	L1	L2	L3	JOIN & INSULATE
HIGH	T1	T2	T3	(T4, T7) (T5, T8) (T6, T9)
LOW	T1, T7	T2, T8	T3, T9	T4, T5, T6

TYPE "T" W/O PROTECTOR

BRAKE CONNECTION						
VOLTAGE	STEARNS BRAKE			DINGS BRAKE		
	L1	L2	Join	L1	L2	Join
HIGH	1(RED)	2(RED)	3(BLACK) 4(BLACK)	2(BLACK)	4(YELLOW)	1(YELLOW) 3(BLACK)
LOW	1(RED) 3(BLACK)	2(RED) 4(BLACK)	-----	2(BLACK) 3(BLACK)	1(YELLOW) 4(YELLOW)	-----

RBC PROPRIETARY AND CONFIDENTIAL INFORMATION
This document is the property of REGAL BELOIT CORPORATION ("RBC") including its subsidiaries and divisions and contains proprietary information of RBC. This document is loaned on the express condition that neither it nor the information contained therein shall be disclosed to others without the express written consent of RBC, and that the information shall be used by the recipient only as approved expressly by RBC. This document shall be returned to RBC upon its request. This document may be subject to certain restrictions under U.S. export control laws and regulations.

				TOLERANCES UNLESS SPECIFIED			ELECTRIC MOTORS GEARMOTORS AND DRIVES		DRAWN JJK 09/17/96		
				DEC	INCHES				CHK		
				.X	±.1				APPR		
				.XX	±.01				SCALE 1:1		
--	REDRAWN IN SOLIDWORKS	VJB 02/08/11		.XXX	±.005	TITLE EXTERNAL WIRING DIAGRAM STANDARD 3 PHASE - DUAL VOLTAGE				REF 005010-01	
01	ADDED DINGS AND BRAKE TABLE (PER CN114156)	TMZ 11/12/96		.XXXX	±.0005	MAT'L W/STEARNS OR DINGS DUAL VOLTAGE BRAKE CONN.				FMF	
NO	REVISION	BY & DATE	CHK	ANG	±1/2°	FINISH LEESON STOCK				PAGE OF	
<div>THIRD ANGLE PROJECTION</div> 			RFP		PREV			SIZE A	DRAWING NO 005010-15		REV --
			NETWORK FILE NAME 00501015								