

PRODUCT INFORMATION PACKET



Model No: G132027.00

Catalog No: G132027.00

Obsolete,

by 199779.00 -...7 1/2HP..3505RPM.213JM.TEFC.230/460V.3PH.60HZ.CONT.40C.1.15SF.RIGID C.C184T34FK41A..

Regal and Leeson are trademarks of Regal Rexnord Corporation or one of its affiliated companies.

©2023 Regal Rexnord Corporation, All Rights Reserved. MC017097E





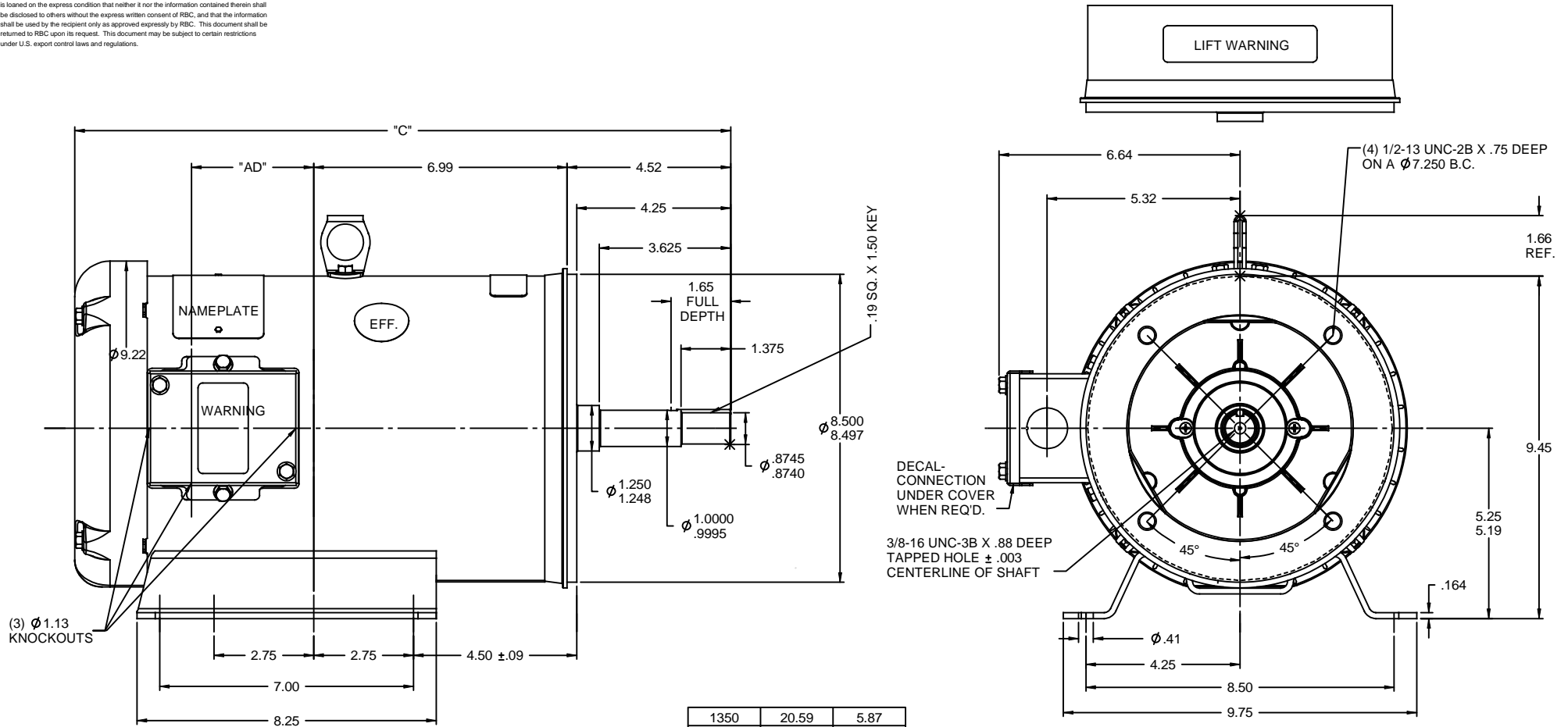
Nameplate Specifications

Phase	3	Output HP	7.50 & 5 Hp
Output KW	5.6 & 3.7 kW	Voltage	230/460 & 190/380 V
Speed	3505 & 2930 rpm	Service Factor	1.0 & 1.0
Frame	213JM	Enclosure	Totally Enclosed Fan Cooled
Thermal Protection	No Protection	Efficiency	88.5 %
Ambient Temperature	40 °C	Frequency	60 & 50 Hz
Current	16.8/8.4 & 14/7 A	Power Factor	94.5
Duty	Continuous	Insulation Class	F
Design Code	B	KVA Code	J
Drive End Bearing Size	6207	Opp Drive End Bearing Size	6205
UL	Recognized	CSA	Y
CE	Y	IP Code	43
Number of Speeds	1		

Technical Specifications

Electrical Type	Squirrel Cage Induction Run	Starting Method	Across The Line
Poles	2	Rotation	Reversible
Resistance Main	.27 Ohms	Mounting	Rigid Base
Drive End Bearing	Ball	Opp Drive End Bearing	Ball
Frame Material	Rolled Steel	Shaft Type	JM
Assembly/Box Mounting	VERIFY		
Outline Drawing	035488-1150	Connection Drawing	005010.01

This is an uncontrolled document once printed or downloaded and is subject to change without notice. Date Created:06/22/2023



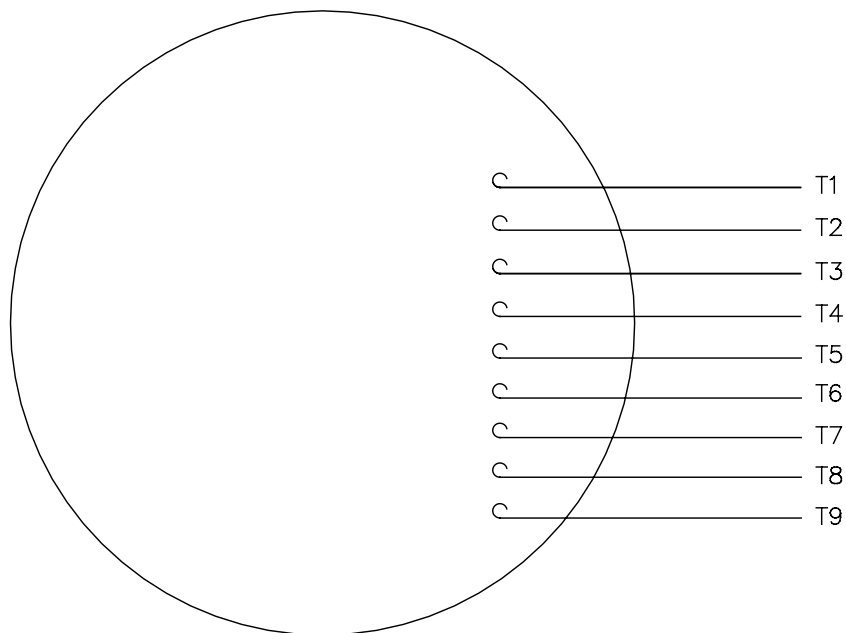
1350	20.59	5.87
1300	20.09	5.37
1250	19.59	4.87
1200	19.09	4.37
1150	18.59	3.87
DASH NO.	"C"	"AD"

GASKETS THROUGHOUT
MAXIMUM FACE RUNOUT TO BE .004 T.I.R.
MAXIMUM PILOT ECCENTRICITY TO BE .004 T.I.R.
PERMISSIBLE SHAFT RUNOUT TO BE .002 T.I.R.

			TOLERANCES UNLESS SPECIFIED		DRAWN LST 10/15/04	
			DEC	INCHES	CHK	RW 10/18/04
			X	±.1	APPR	KH 10/18/04
			XX	±.03	SCALE 3:8	
			XXX	±.005	REF 131583	
- UPDATED & REDRAWN ON SOLIDWORKS			LST 11/10/2009	XX XXXX ±.0005	FMF	
NO			REVISION	BY & DATE	PAGE OF	
			THIRD ANGLE PROJECTION	CHK ANG ±1/2°	FINISH	
			RFP	PREV	SIZE B	
			NETWORK FILE NAME		DRAWING NO 035488	
					REV -	

005010-01

VIEW FROM OUTSIDE OF MOTOR AT SWITCH END.



				TOLERANCES UNLESS SPECIFIED		 Regal Beloit America, Inc.			DRAWN	RDW 04/12/02
				DEC.	INCHES				CHK	
				.X	±.1				APPD	
				.XX	±.01				SCALE	1=1
				.XXX	±.005	TITLE EXTERNAL WIRING DIAGRAM 3 PHASE W/O PROTECTOR	REF	FIG.2-51		
A	UPDATED TO REGAL LOGO	SAJ 06/26/15	AJY	.XXXX	±.0005		MAT'L.	DECAL - 004014	FMF	
NO.	REVISION	BY & DATE	CHK	ANG	±1/2"	FINISH		PREV		
THIS DRAWING IN DESIGN AND DETAIL IS OUR PROPERTY AND MUST NOT BE USED EXCEPT IN CONNECTION WITH OUR WORK ALL RIGHTS OF DESIGN AND INVENTION ARE RESERVED THIS IS AN ELECTRONICALLY GENERATED DOCUMENT - DO NOT SCALE THIS PRINT				RFP	04/12/02	CAD FILE	00501001	SIZE	DRAWING NO.	REV
				DIST BRF-NLV				A	005010-01	A