

PRODUCT INFORMATION PACKET

Model No: G132014.00

Catalog No: G132014.00

5HP..1750RPM.184.TEFC./V.3PH.60HZ.CONT.NOT.40C.1.15SF.RIGID C..C184T17WK14B

Regal and are trademarks of Regal Rexnord Corporation or one of its affiliated companies.
©2022 Regal Rexnord Corporation, All Rights Reserved. MC017097E



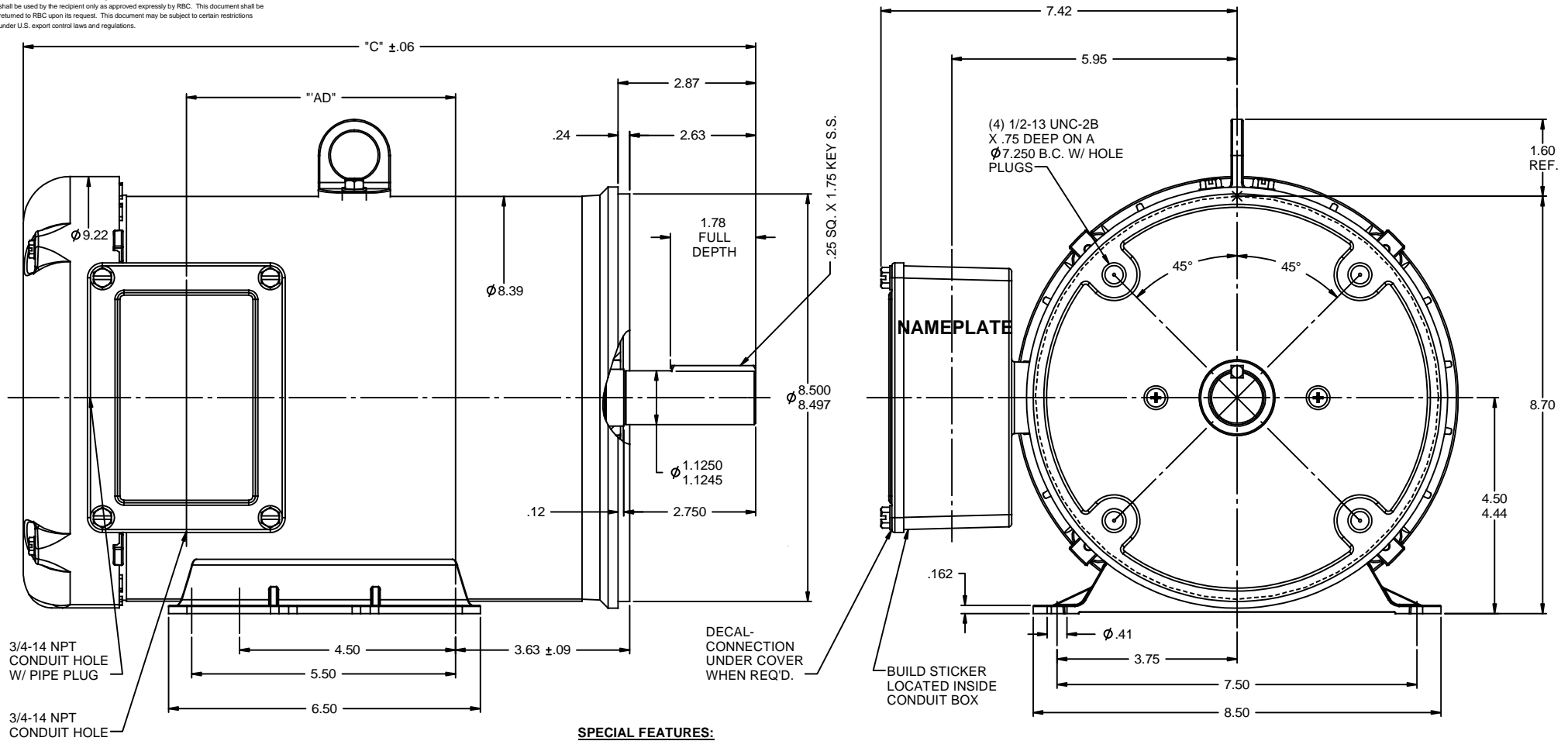
Nameplate Specifications

Output HP	5 Hp	Output KW	3.7 kW
Frequency	60 Hz	Voltage	575 V
Current	5.2 A	Speed	1750 rpm
Service Factor	1.15	Phase	3
Efficiency	87.5 %	Power Factor	82.3
Duty	Continuous	Insulation Class	F
Design Code	B	KVA Code	J
Frame	184TC	Enclosure	Totally Enclosed Fan Cooled
Thermal Protection	No Protection	Ambient Temperature	40 °C
Drive End Bearing Size	6207	Opp Drive End Bearing Size	6207
UL	Recognized	CSA	Y
CE	Y	IP Code	55
Number of Speeds	1		

Technical Specifications

Electrical Type	Squirrel Cage Induction Run	Starting Method	Across The Line
Poles	4	Rotation	Reversible
Resistance Main	3.08 Ohms	Mounting	Rigid Base
Motor Orientation	Horizontal	Drive End Bearing	Ball
Opp Drive End Bearing	Ball	Frame Material	Rolled Steel
Shaft Type	T	Assembly/Box Mounting	F1 ONLY
Outline Drawing	035437-950	Connection Drawing	005102.01


This is an uncontrolled document once printed or downloaded and is subject to change without notice. Date Created:10/18/2022



SPECIAL FEATURES:
 DOUBLE LIP OIL SEAL BOTH ENDS
 GASKETS THROUGHOUT
 O-RING SEALED ENDBELLS & THRU BOLTS
 LOCKED BEARING W/ SEALED LOCK SCREWS

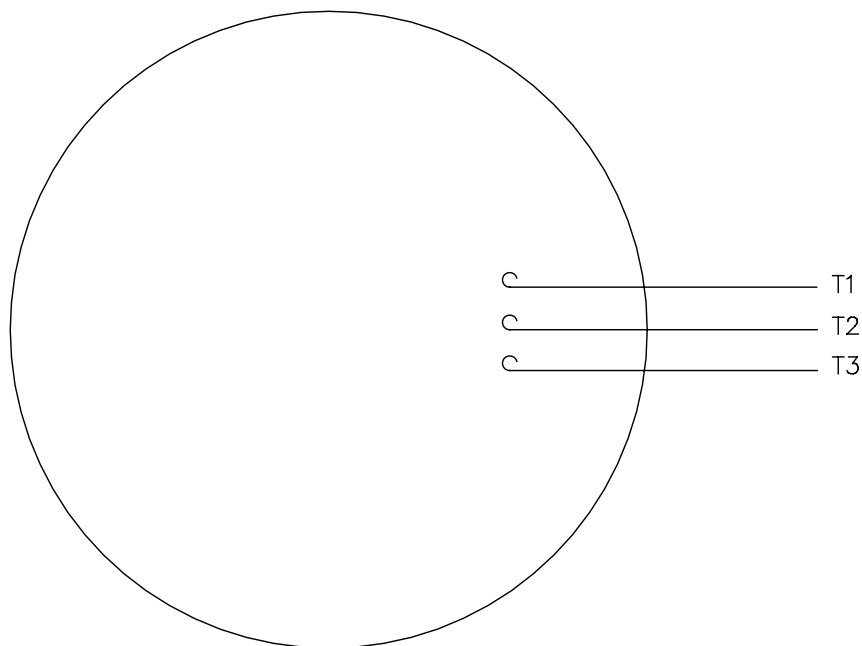
MAXIMUM FACE RUNOUT TO BE .004 T.I.R.
 MAXIMUM PILOT ECCENTRICITY TO BE .004 T.I.R.
 PERMISSIBLE SHAFT RUNOUT TO BE .002 T.I.R.

DASH NO.	"C"	"AD"
850	14.27	4.61
900	14.77	5.11
950	15.27	5.61
1000	15.77	6.11

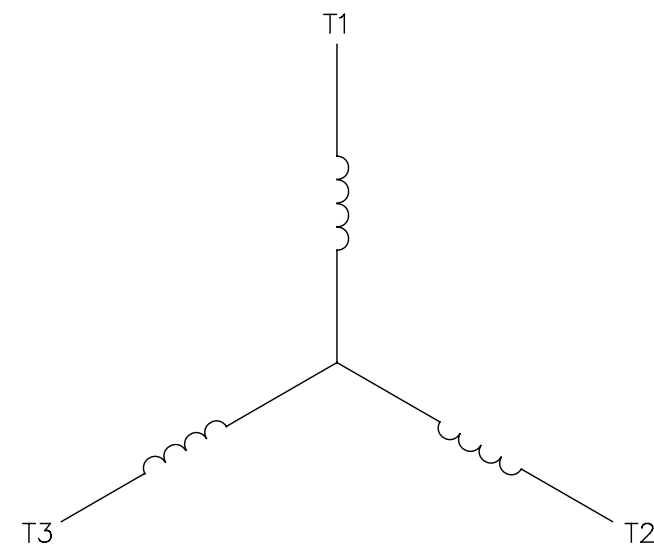
				TOLERANCES UNLESS SPECIFIED	 REGAL-BELOIT CORPORATION	DRAWN JJK 4/4/02
				DEC INCHES		CHK
				X ±.1		APPR
02	ADDED DASH NO. 1000 (132208.00)	PG 9/21/2010	XX ±.03	TITLE OUTLINE - 180TC FRAME		SCALE 1:2
01	ADDED NOTE FOR BUILD STICKER LOC. PER ISAAC 10-1677	PG 5/4/2010	XXX ±.005	TEFC - RIGID "C"		REF OLG131167
-	UPDATED & REDRAWN TO SOLIDWORKS	LST 12/11/2009	XXXX ±.0005	MATL STAINLESS STEEL DUCK		FMF G131901.00
NO	REVISION	BY & DATE	CHK ANG ±1/2"	FINISH	PAGE OF	
	THIRD ANGLE PROJECTION		RFP	PREV	SIZE B	DRAWING NO 035437
			NETWORK FILE NAME 035437			REV 02

005102-01

VIEW FROM OUTSIDE OF MOTOR AT SWITCH END.



LINE LEADS

CONNECT LEADS AS FOLLOWS
FOR FOUR CONDUCTOR CORD ()

CORD	L1 (RED)	L2 (WHITE)	L3 (BLACK)	(GREEN)
MOTOR	T1	T2	T3	GROUND

NO.	REVISION	BY & DATE	CHK	ANG	TOLERANCES UNLESS SPECIFIED		FINISH	DRAWN	CHK	APPD	SCALE	REF	FMP	PREV
					DEC.	INCHES								
					.X	±.1								
08	UPDATED TO REGAL LOGO	SAJ 06/26/15	AJY	.XX	±.01									
07	UPDATED TO CURRENT STANDARDS	DBT 5/30/97		.XXX	±.005									
06	REDRAWN ON CAD; ADDED DECAL NUMBER	SAW 1/24/95		.XXXX	±.0005									
					±1/2"									
THIS DRAWING IN DESIGN AND DETAIL IS OUR PROPERTY AND MUST NOT BE USED EXCEPT IN CONNECTION WITH OUR WORK ALL RIGHTS OF DESIGN AND INVENTION ARE RESERVED THIS IS AN ELECTRONICALLY GENERATED DOCUMENT - DO NOT SCALE THIS PRINT								RFP	5/1/02	CAD FILE	00510201	SIZE	DRAWING NO.	REV.
								DIST	BRF-NLV			A	005102-01	08

REGAL™ Regal Beloit America, Inc.