

PRODUCT INFORMATION PACKET



Model No: G131885.00

Catalog No: G131885.00

Obsolete,

ed by 199773.00 -.7 1/2HP..3505RPM.184JP.DP.230/460V.3PH.60HZ.CONT.40C.1.15SF.RIGID C.C184T34DK19A.....

Regal and Leeson are trademarks of Regal Rexnord Corporation or one of its affiliated companies.

©2023 Regal Rexnord Corporation, All Rights Reserved. MC017097E





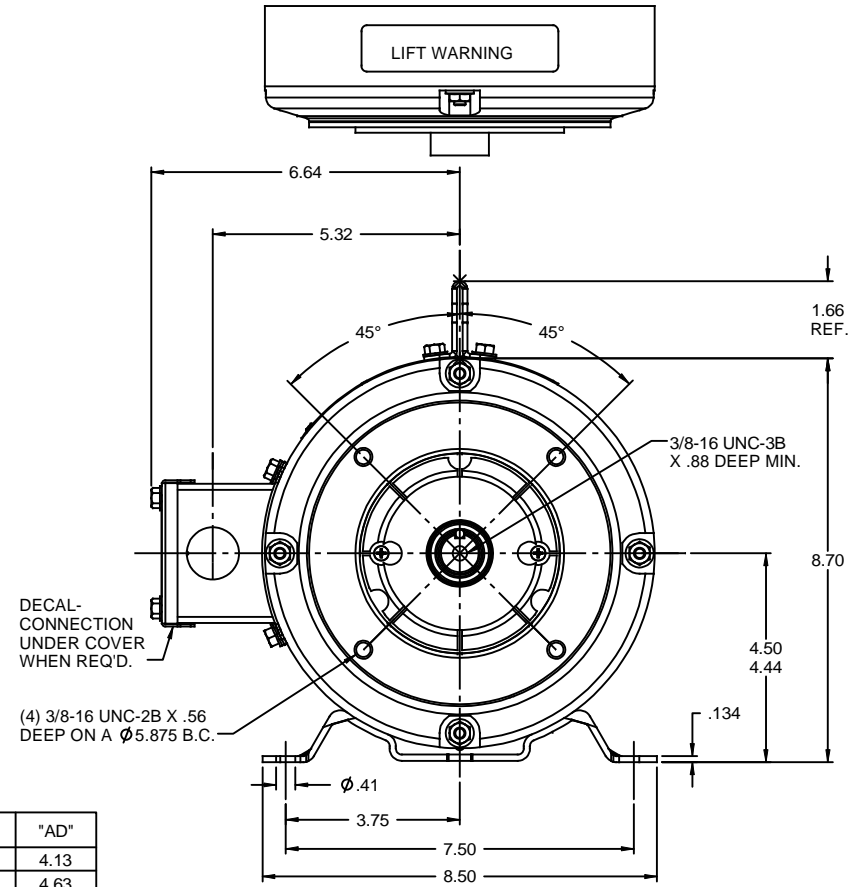
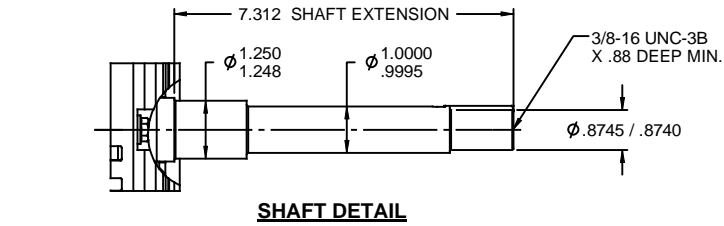
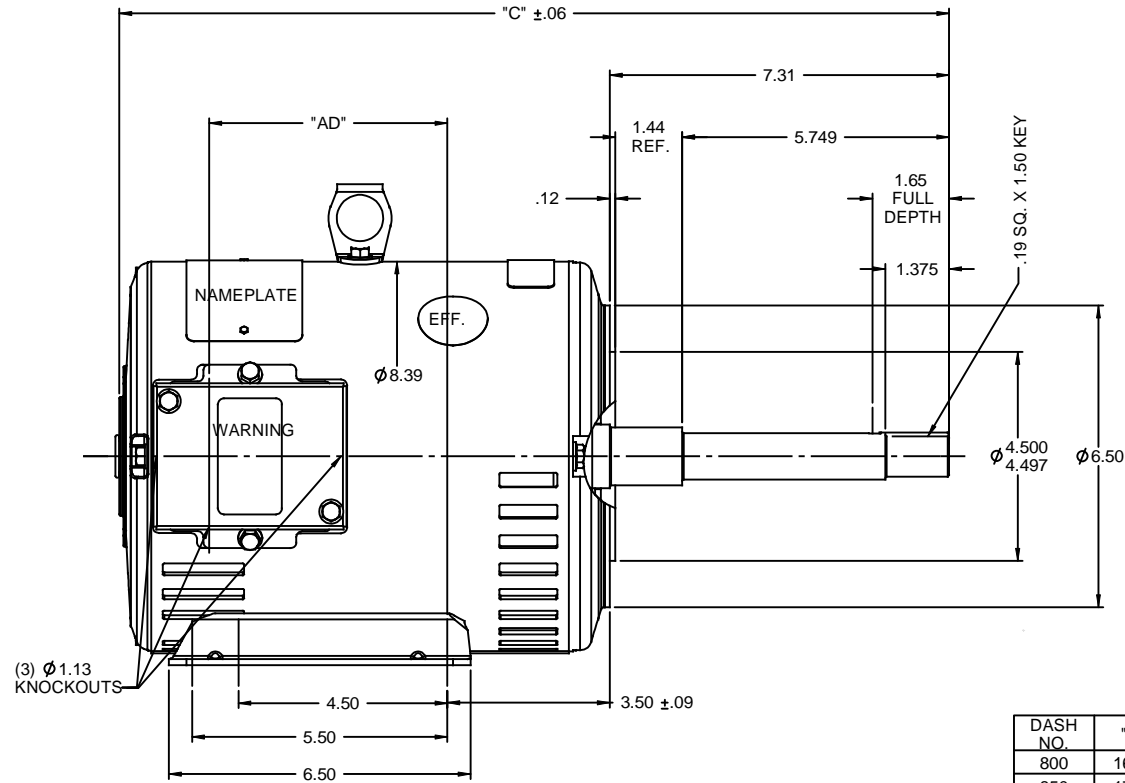
Nameplate Specifications

Phase	3	Output HP	7.50 & 5 Hp
Output KW	5.6 & 3.7 kW	Voltage	208-230/460 & 190/380 V
Speed	3505 & 2910 rpm	Service Factor	1.15 & 1.15
Frame	180JP	Enclosure	Drip Proof
Thermal Protection	No Protection	Efficiency	87.5 %
Ambient Temperature	40 °C	Frequency	60 & 50 Hz
Current	19-17.6/8.8 & 14/7 A	Power Factor	91
Duty	Continuous	Insulation Class	F
Design Code	B	KVA Code	J
Drive End Bearing Size	6207	Opp Drive End Bearing Size	6205
UL	Recognized	CSA	Y
CE	Y	IP Code	23
Number of Speeds	1		

Technical Specifications


Electrical Type	Squirrel Cage Induction Run	Starting Method	Across The Line
Poles	2	Rotation	Reversible
Resistance Main	.382 Ohms	Mounting	Rigid Base
Drive End Bearing	Ball	Opp Drive End Bearing	Ball
Frame Material	Rolled Steel	Shaft Type	JP
Assembly/Box Mounting	VERIFY		
Outline Drawing	035752-1050	Connection Drawing	005010.01

This is an uncontrolled document once printed or downloaded and is subject to change without notice. Date Created:06/23/2023



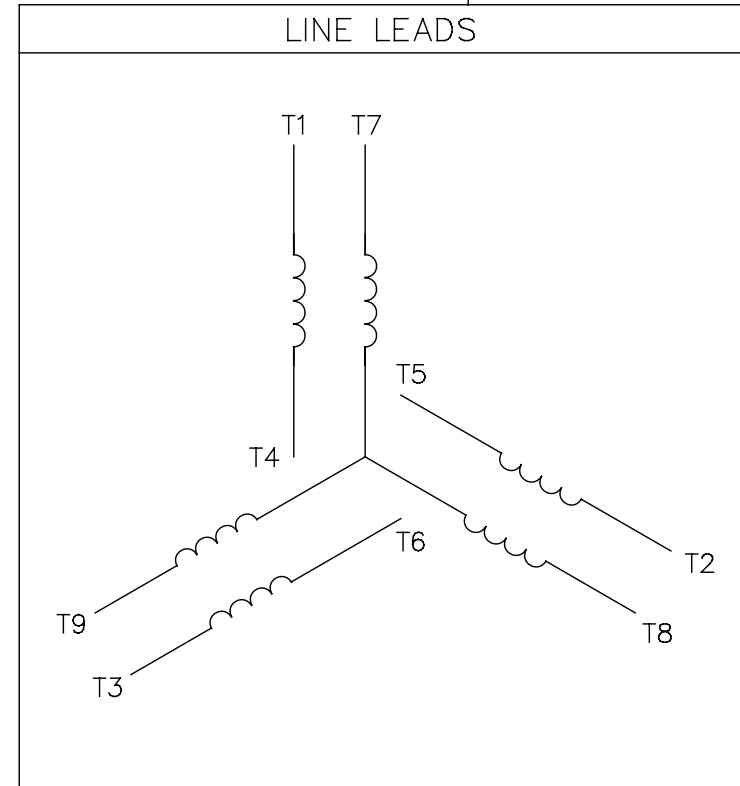
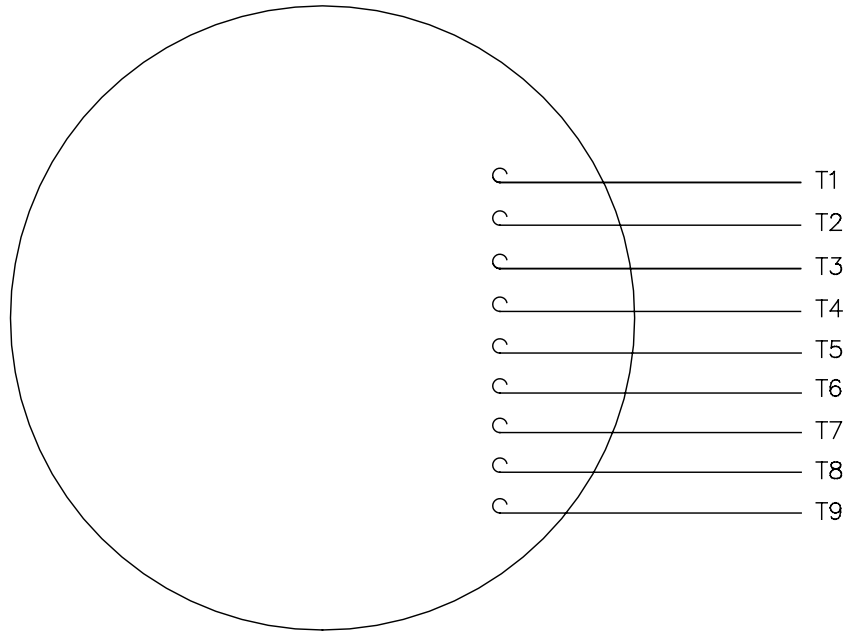
DASH NO.	"C"	"AD"
800	16.88	4.13
850	17.38	4.63
900	17.88	5.13
950	18.38	5.63
1000	18.88	6.13
1050	19.38	6.63
1100	19.88	7.13
1150	20.38	7.63
1200	20.88	8.13

GASKETS THROUGHOUT
MAXIMUM FACE RUNOUT TO BE .004 T.I.R.
MAXIMUM PILOT ECCENTRICITY TO BE .004 T.I.R.
PERMISSIBLE SHAFT RUNOUT TO BE .008 T.I.R.


				TOLERANCES UNLESS SPECIFIED	 REGAL-BELOIT CORPORATION	DRAWN LST 1/8/10	
				DEC INCHES		CHK	
				X $\pm .1$		APPR	
				XX $\pm .03$		SCALE 3:8	
				XXX $\pm .005$	TITLE OUTLINE - 184JP FRAME DRIP PROOF - JP PUMP SHAFT	REF	
				XXXI $\pm .0005$		FMF	
NO	REVISION	BY & DATE	CHK ANG $\pm 1/2^\circ$	FINISH	PAGE OF		
THIRD ANGLE PROJECTION			RFP	PREV	SIZE B	DRAWING NO 035752	REV
				NETWORK FILE NAME			

005010-01

VIEW FROM OUTSIDE OF MOTOR AT SWITCH END.



VOLTAGE	L1	L2	L3	JOIN & INSULATE
HIGH	T1	T2	T3	(T4,T7) (T5,T8) (T6,T9)
LOW	T1,T7	T2,T8	T3,T9	T4,T5,T6

				TOLERANCES UNLESS SPECIFIED		 Regal Beloit America, Inc.			DRAWN RDW 04/12/02		
				DEC.	INCHES				CHK		
				.X	±.1				APPD		
				.XX	±.01				SCALE 1=1		
				.XXX	±.005	TITLE EXTERNAL WIRING DIAGRAM 3 PHASE W/O PROTECTOR			REF FIG.2-51		
A	UPDATED TO REGAL LOGO	SAJ 06/26/15	AJY	.XXXX	±.0005				MAT'L. DECAL - 004014		
NO.	REVISION	BY & DATE	CHK	ANG	±1/2"	FINISH			PREV		
THIS DRAWING IN DESIGN AND DETAIL IS OUR PROPERTY AND MUST NOT BE USED EXCEPT IN CONNECTION WITH OUR WORK ALL RIGHTS OF DESIGN AND INVENTION ARE RESERVED THIS IS AN ELECTRONICALLY GENERATED DOCUMENT - DO NOT SCALE THIS PRINT			RFP 04/12/02		CAD FILE 00501001			SIZE	DRAWING NO.		REV.
			DIST BRF-NLV					A	005010-01		A