

PRODUCT INFORMATION PACKET

Model No: G131614.00

Catalog No: G131614.00

Obsolete in the US,

ed by 132476.00 -.5HP..1760RPM.184.TEFC./V.3PH.60HZ.CONT.NOT.40C.1.15SF.RIGID.BRAKEMOTOR.C184T17FI

Regal and are trademarks of Regal Rexnord Corporation or one of its affiliated companies.
©2022 Regal Rexnord Corporation, All Rights Reserved. MC017097E



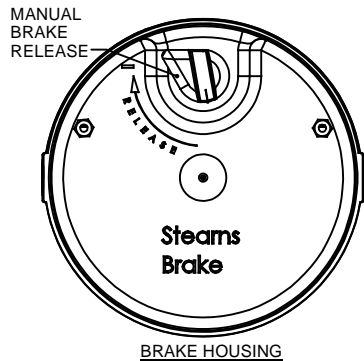
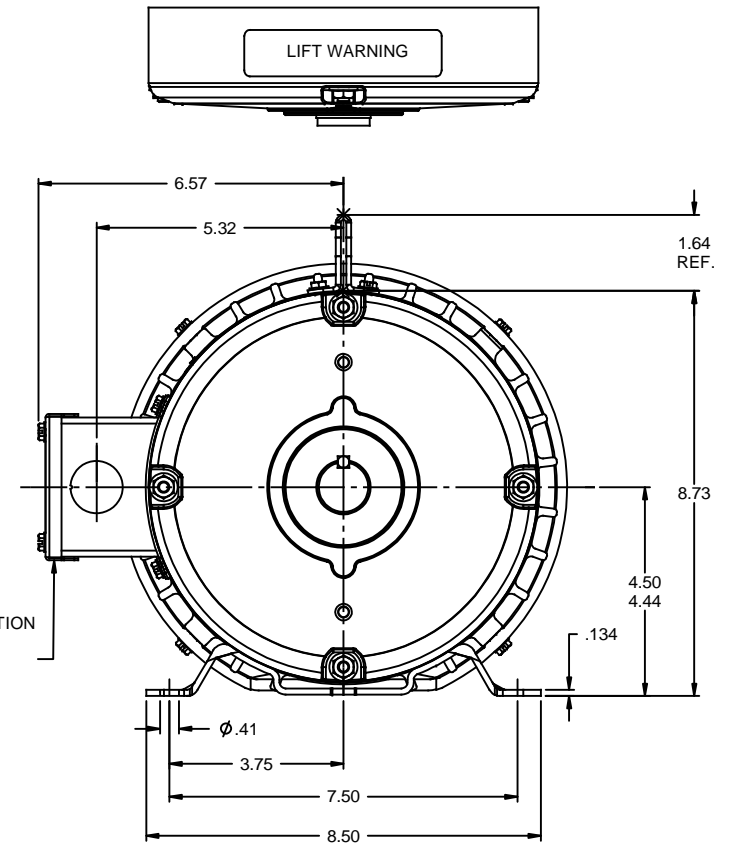
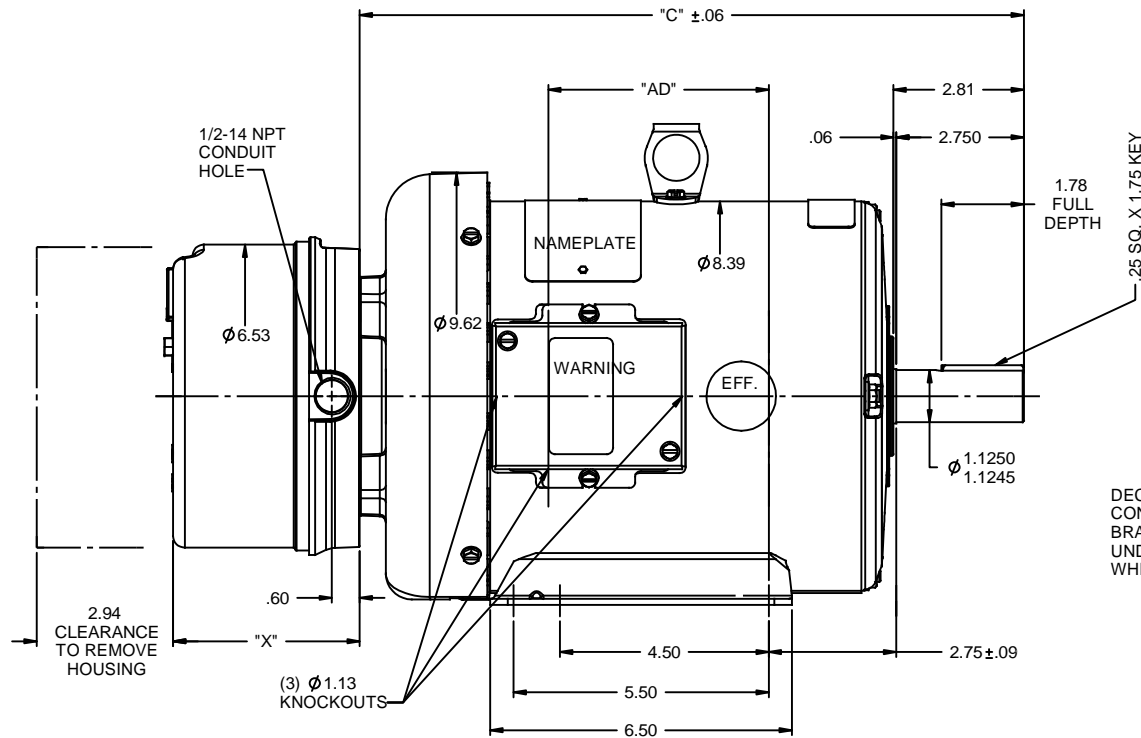
Nameplate Specifications

Output HP	5 Hp	Output KW	3.7 kW
Frequency	60 Hz	Voltage	230/460 V
Current	13.0/6.5 A	Speed	1750 rpm
Service Factor	1.15	Phase	3
Efficiency	87.5 %	Power Factor	82
Duty	Continuous	Insulation Class	F
Design Code	B	KVA Code	J
Frame	184T	Enclosure	Totally Enclosed Fan Cooled
Thermal Protection	No Protection	Ambient Temperature	40 °C
Drive End Bearing Size	6206	Opp Drive End Bearing Size	6205
UL	Recognized	CSA	Y
CE	Y	IP Code	43
Number of Speeds	1		

Technical Specifications

Electrical Type	Squirrel Cage Induction Run	Starting Method	Across The Line
Poles	4	Rotation	Reversible
Resistance Main	3.08 Ohms	Mounting	Rigid Base
Drive End Bearing	Ball	Opp Drive End Bearing	Ball
Frame Material	Rolled Steel	Shaft Type	T
Assembly/Box Mounting	VERIFY		
Outline Drawing	035517-850	Connection Drawing	005010.15


This is an uncontrolled document once printed or downloaded and is subject to change without notice. Date Created:07/18/2022



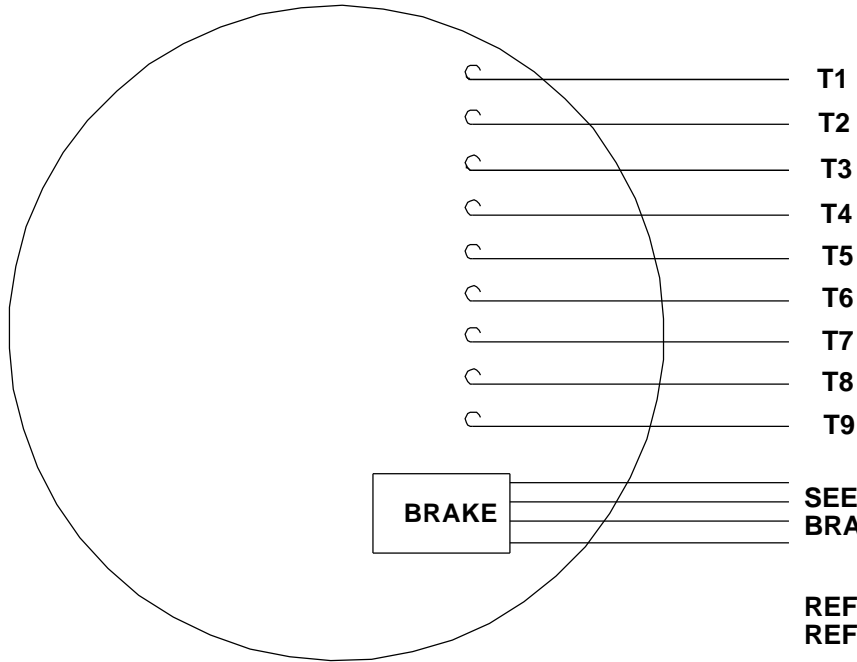
BRAKE TORQUE	"X"
15 FT-LB	4.00
20 FT-LB	4.46
25 FT-LB	4.46

DASH NO.	"C"	"AD"
800	14.32	4.75
850	14.82	5.25
900	15.32	5.75
950	15.82	6.25
1000	16.32	6.75
1050	16.82	7.25
1100	17.32	7.75
1150	17.82	8.25

GASKETS THROUGHOUT
MINIMUM FRAME LENGTH SHOULD BE 8.00"

				TOLERANCES UNLESS SPECIFIED	 REGAL-BELOIT CORPORATION	DRAWN RDW 4/18/07
				DEC INCHES		CHK
				X $\pm .1$	TITLE OUTLINE - 180T FRAME TEFC- RIGID BRAKE MOTOR	APPR SW 4/18/07
				.XX $\pm .03$		SCALE 3:8
				.XXX $\pm .005$		REF OL131613
- REDRAWN ON SOLIDWORKS				XX .XXX $\pm .0005$		FMF
NO	REVISION	BY & DATE	CHK	ANG $\pm 1/2^\circ$	FINISH	PAGE OF
			RFP		PREV	
THIRD ANGLE PROJECTION				NETWORK FILE NAME	SIZE B	DRAWING NO 035517
						REV -

VIEW FROM OUTSIDE OF MOTOR AT SWITCH END.

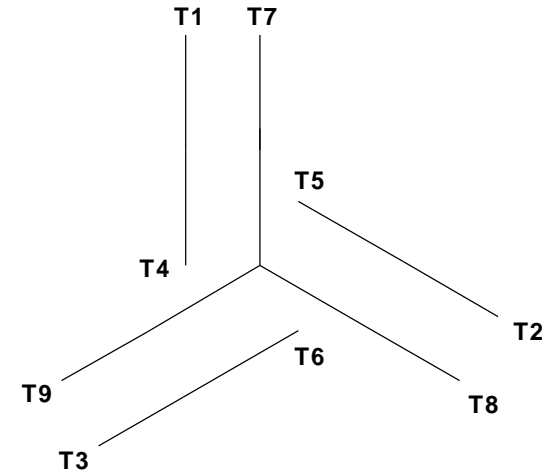


CAUTION:
LEAD WIRE INSULATION TO EXTEND
MINIMUM OF 1/4" INTO CONNECTOR
INSULATION

**SEE TABLE FOR
BRAKE CONNECTIONS**

REF. DECAL (MOTOR) - 004014
REF. DECAL (BRAKE) - 080034 (STEARNS & DINGS BRAKE)

LINE LEADS



VOLTAGE	L1	L2	L3	JOIN & INSULATE
HIGH	T1	T2	T3	(T4, T7) (T5, T8) (T6, T9)
LOW	T1, T7	T2, T8	T3, T9	T4, T5, T6

TYPE "T" W/O PROTECTOR

BRAKE CONNECTION						
VOLTAGE	STEARNS BRAKE			DINGS BRAKE		
	L1	L2	Join	L1	L2	Join
HIGH	1(RED)	2(RED)	3(BLACK) 4(BLACK)	2(BLACK)	4(YELLOW)	1(YELLOW) 3(BLACK)
LOW	1(RED) 3(BLACK)	2(RED) 4(BLACK)	-----	2(BLACK) 3(BLACK)	1(YELLOW) 4(YELLOW)	-----

RBC PROPRIETARY AND CONFIDENTIAL INFORMATION
 This document is the property of REGAL BELOIT CORPORATION ("RBC") including its subsidiaries and divisions and contains proprietary information of RBC. This document is loaned on the express condition that neither it nor the information contained therein shall be disclosed to others without the express written consent of RBC, and that the information shall be used by the recipient only as approved expressly by RBC. This document shall be returned to RBC upon its request. This document may be subject to certain restrictions under U.S. export control laws and regulations.

				TOLERANCES UNLESS SPECIFIED	ELECTRIC MOTORS GEARMOTORS AND DRIVES	DRAWN JJK 09/17/96	
				DEC INCHES		CHK	
				.X ±.1		APPR	
				.XX ±.01	TITLE EXTERNAL WIRING DIAGRAM STANDARD 3 PHASE - DUAL VOLTAGE	SCALE 1:1	
--	REDRAWN IN SOLIDWORKS	VJB 02/08/11	.XXX ±.005			REF 005010-01	
01	ADDED DINGS AND BRAKE TABLE (PER CN114156)	TMZ 11/12/96	.XXXX ±.0005		MAT'L W/STEARNS OR DINGS DUAL VOLTAGE BRAKE CONN.	FMF	
NO	REVISION	BY & DATE	CHK	ANG ±1/2°	FINISH LEESON STOCK	PAGE OF	
THIRD ANGLE PROJECTION			RFP	PREV	SIZE	DRAWING NO	
			NETWORK FILE NAME 00501015			A 005010-15	
						REV	
						--	