

PRODUCT INFORMATION PACKET



Model No: G131582.00

Catalog No: G131582.00

Obsolete in the US,

M frame model199779.00 - 7 1/2HP..3505RPM.184JM.TEFC.230/460V.3PH.60HZ.CONT.40C.1.15SF.RIGID C.C184T3

Regal and Leeson are trademarks of Regal Rexnord Corporation or one of its affiliated companies.

©2023 Regal Rexnord Corporation, All Rights Reserved. MC017097E





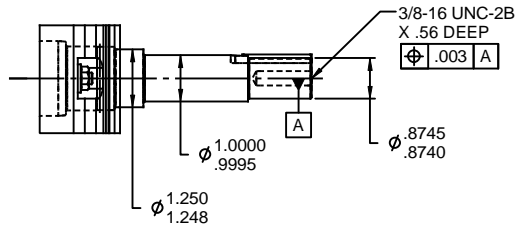
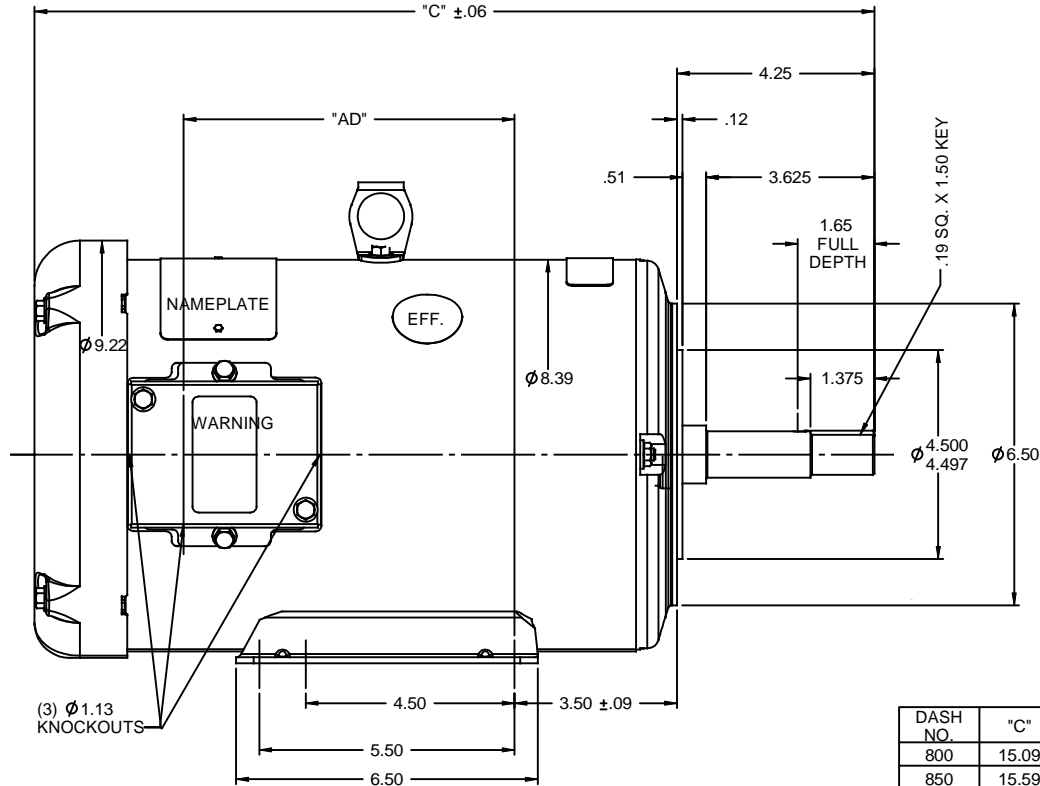
Nameplate Specifications

Phase	3	Output HP	7.50 & 5 Hp
Output KW	5.6 & 3.7 kW	Voltage	230/460 & 190/380 V
Speed	3505 & 2930 rpm	Service Factor	1.15 & 1.15
Frame	184JM	Enclosure	Totally Enclosed Fan Cooled
Thermal Protection	No Protection	Efficiency	88.5 %
Ambient Temperature	40 °C	Frequency	60 & 50 Hz
Current	16.8/8.4 & 14/7 A	Power Factor	94.5
Duty	Continuous	Insulation Class	F
Design Code	B	KVA Code	J
Drive End Bearing Size	6207	Opp Drive End Bearing Size	6205
UL	Recognized	CSA	Y
CE	Y	IP Code	43
Number of Speeds	1		

Technical Specifications

Electrical Type	Squirrel Cage Induction Run	Starting Method	Across The Line
Poles	2	Rotation	Reversible
Resistance Main	.27 Ohms	Mounting	Rigid Base
Drive End Bearing	Ball	Opp Drive End Bearing	Ball
Frame Material	Rolled Steel	Shaft Type	JM
Assembly/Box Mounting	VERIFY		
Outline Drawing	035357-1050	Connection Drawing	005010.01

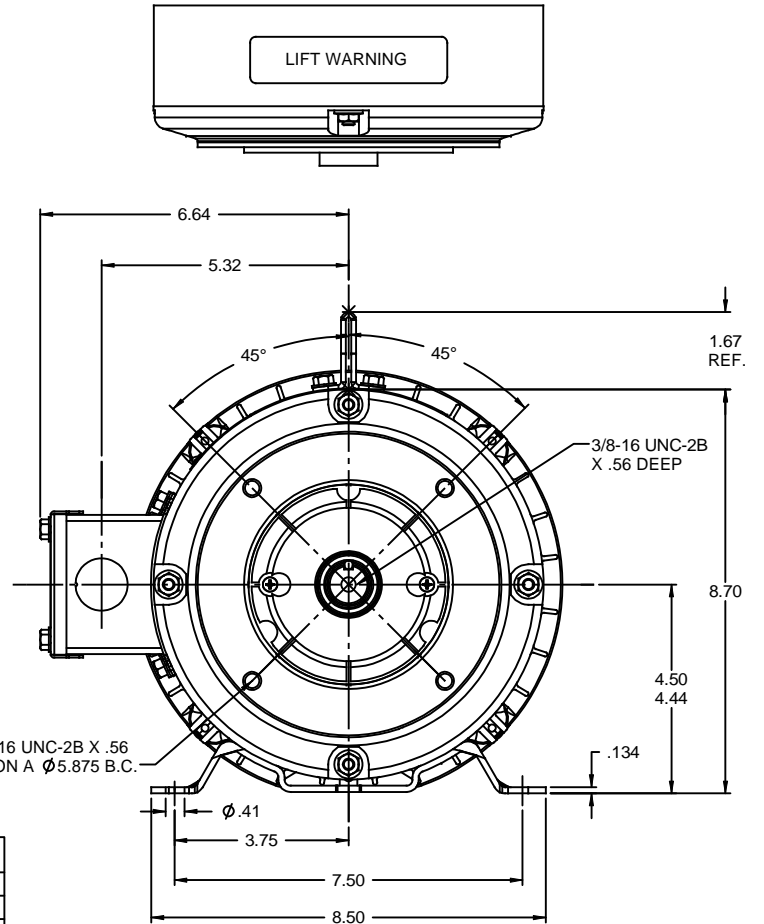
This is an uncontrolled document once printed or downloaded and is subject to change without notice. Date Created:06/23/2023



SHAFT DETAIL

DASH NO.	"C"	"AD"
800	15.09	4.13
850	15.59	4.63
900	16.09	5.13
950	16.59	5.63
1000	17.09	6.13
1050	17.59	6.63
1100	18.09	7.13
1150	18.59	7.63

(4) 3/8-16 UNC-2B X .56 DEEP ON A Ø5.875 B.C.

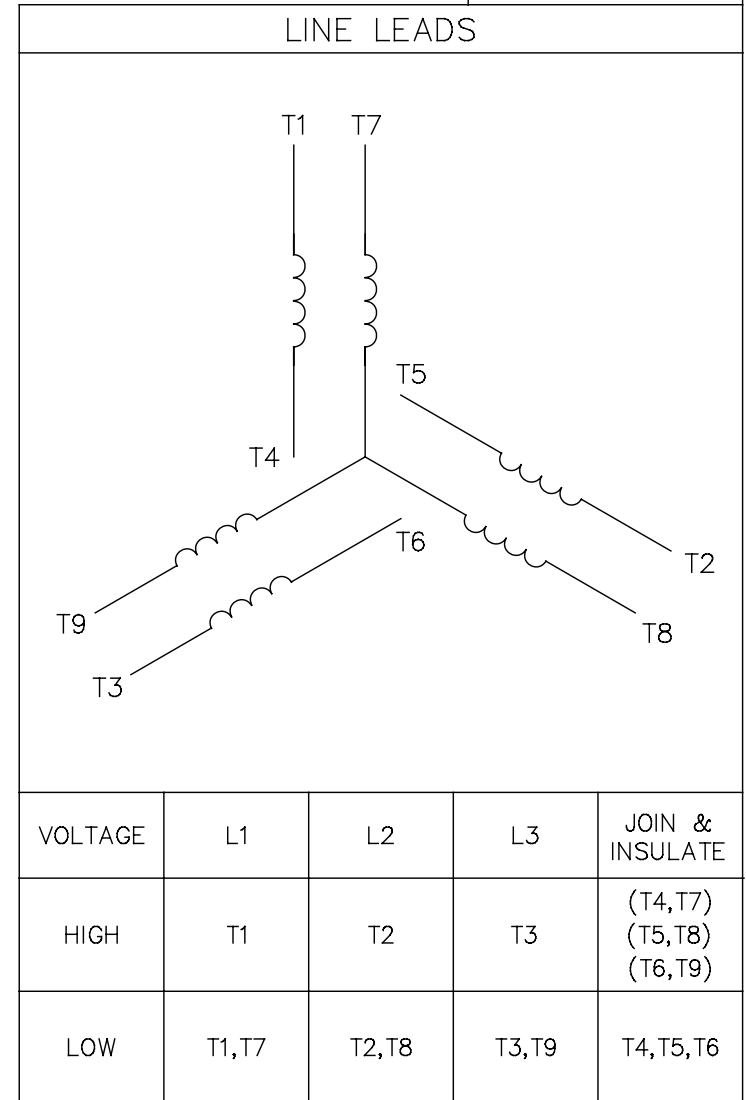



GASKETS THROUGHOUT
MAXIMUM FACE RUNOUT TO BE .004 T.I.R.
MAXIMUM PILOT ECCENTRICITY TO BE .004 T.I.R.
PERMISSIBLE SHAFT RUNOUT TO BE .002 T.I.R.

		TOLERANCES UNLESS SPECIFIED		DRAWN PG 9/15/97	
		DEC INCHES		CHK RK 9/15/97	
		X ±.1		APPR	
		XX ±.03		SCALE 3:8	
		XXX ±.005		REF 035199	
- UPDATED & REDRAWN ON SOLIDWORKS		LST 12/8/2009		FMF	
NO		REVISION		PAGE OF	
		BY & DATE		FINISH	
		CHK ANG ±1/2°		PREV	
		RFP		SIZE B	
		NETWORK FILE NAME		DRAWING NO 035357	
		THIRD ANGLE PROJECTION		REV -	

005010-01

VIEW FROM OUTSIDE OF MOTOR AT SWITCH END.



				TOLERANCES UNLESS SPECIFIED		 Regal Beloit America, Inc.	DRAWN RDW 04/12/02	
				DEC.	INCHES		CHK	
				.X	±.1		APPD	
				.XX	±.01		SCALE 1=1	
				.XXX	±.005	TITLE EXTERNAL WIRING DIAGRAM 3 PHASE W/O PROTECTOR	REF FIG.2-51	
A	UPDATED TO REGAL LOGO	SAJ 06/26/15	AJY	.XXXX	±.0005		FMF	
NO.	REVISION	BY & DATE	CHK	ANG	±1/2"	FINISH	PREV	
THIS DRAWING IN DESIGN AND DETAIL IS OUR PROPERTY AND MUST NOT BE USED EXCEPT IN CONNECTION WITH OUR WORK ALL RIGHTS OF DESIGN AND INVENTION ARE RESERVED THIS IS AN ELECTRONICALLY GENERATED DOCUMENT - DO NOT SCALE THIS PRINT				RFP	04/12/02	CAD FILE	00501001	SIZE
				DIST	BRF-NLV			A
							DRAWING NO.	
							005010-01	
							REV.	
							A	